



MILLENNIUM CENTRE

200 Market Ave N
Canton, Ohio 44702

- Office and retail space available in the beautiful Millennium Centre Building.
- Class "A" former law offices on the 2nd and 3rd floors total 26,437 SF. These floors can be leased separately at 6,811 SF or 19,627 SF.
- 1,692 SF former financial planner space on the 2nd floor with reception, conference room and (2) large offices.
- 1,550 SF former jewelry store on the 1st floor with private entrance, exposed brick wall. Perfect for retail or office with signage.
- Located on the square in Downtown Canton directly across from the court house.
- Plenty of parking available on attached parking deck with access via elevated walkway



Dan Spring, SIOR
P 330 966 8800 ext. 309
dan@naispring.com

Kelly Sober
P 330 966 8800 ext. 312
kelly@naispring.com

For Lease Millennium Center



INFORMATION INCLUDED OR REFERRED TO HEREIN IS FURNISHED BY 3RD PARTIES & IS NOT GUARANTEED AS TO ITS ACCURACY OR COMPLETENESS. ALL INFORMATION INCLUDED OR REFERRED TO HEREIN IS CONFIDENTIAL & FURNISHED SOLELY FOR THE PURPOSE OF YOUR REVIEW IN CONNECTION WITH A POTENTIAL PURCHASE/LEASE OF THE SUBJECT PROPERTY(IES), AS APPLICABLE. INDEPENDENT ESTIMATES OF PROFORMA INCOME & EXPENSES SHOULD BE DEVELOPED BY YOU BEFORE ANY DECISION IS MADE ON WHETHER TO MAKE ANY PURCHASE.

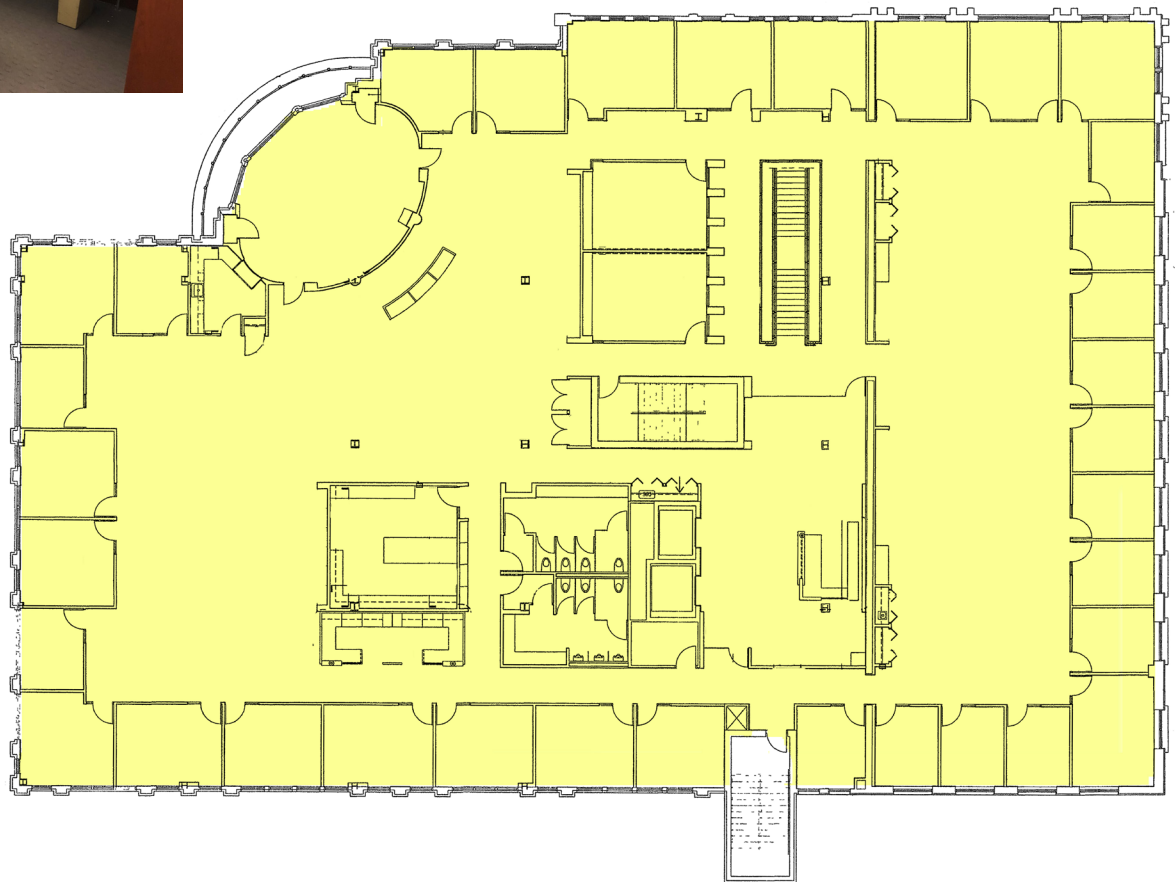
4607 Cleveland Ave NW
Canton, Ohio 44709
+1 330 966 8800
naispring.com

Sq Ft	Sq Ft Rate	CAM	Total Monthly Rate
19,627	\$16.25	\$3.78	\$32,760.73

For Lease
Millennium Center
3rd Floor 19,627 SF



Third floor with 2nd floor
access



INFORMATION INCLUDED OR REFERRED TO HEREIN IS FURNISHED BY 3RD PARTIES & IS NOT GUARANTEED AS TO ITS ACCURACY OR COMPLETENESS. ALL INFORMATION INCLUDED OR REFERRED TO HEREIN IS CONFIDENTIAL & FURNISHED SOLELY FOR THE PURPOSE OF YOUR REVIEW IN CONNECTION WITH A POTENTIAL PURCHASE/LEASE OF THE SUBJECT PROPERTY(IES), AS APPLICABLE. INDEPENDENT ESTIMATES OF PROFORMA INCOME & EXPENSES SHOULD BE DEVELOPED BY YOU BEFORE ANY DECISION IS MADE ON WHETHER TO MAKE ANY PURCHASE.

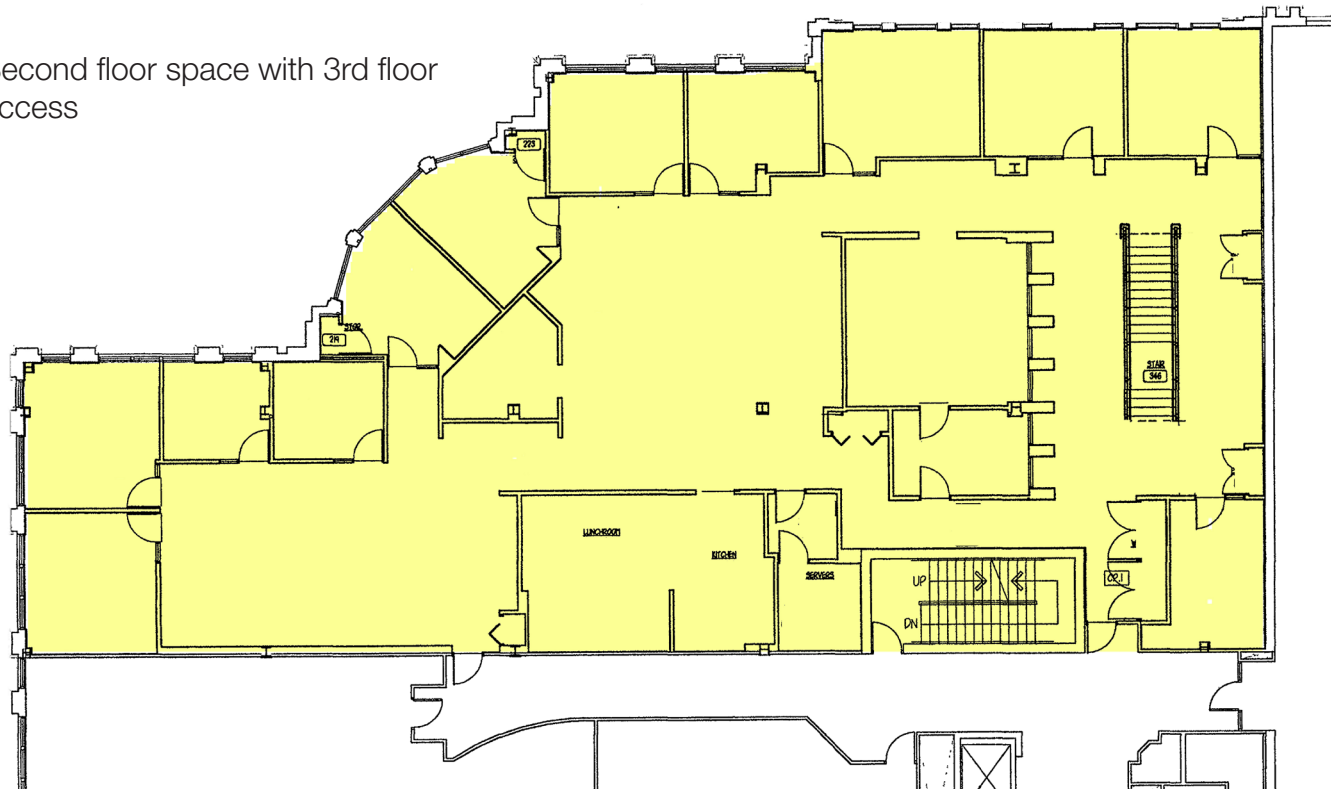
4607 Cleveland Ave NW
Canton, Ohio 44709
+1 330 966 8800
naispring.com

Sq Ft	Sq Ft Rate	CAM	Total Monthly Rate
6811	\$16.25	\$3.78	\$11,357.34

For Lease
Millennium Center
2nd 6,811 SF



Second floor space with 3rd floor access

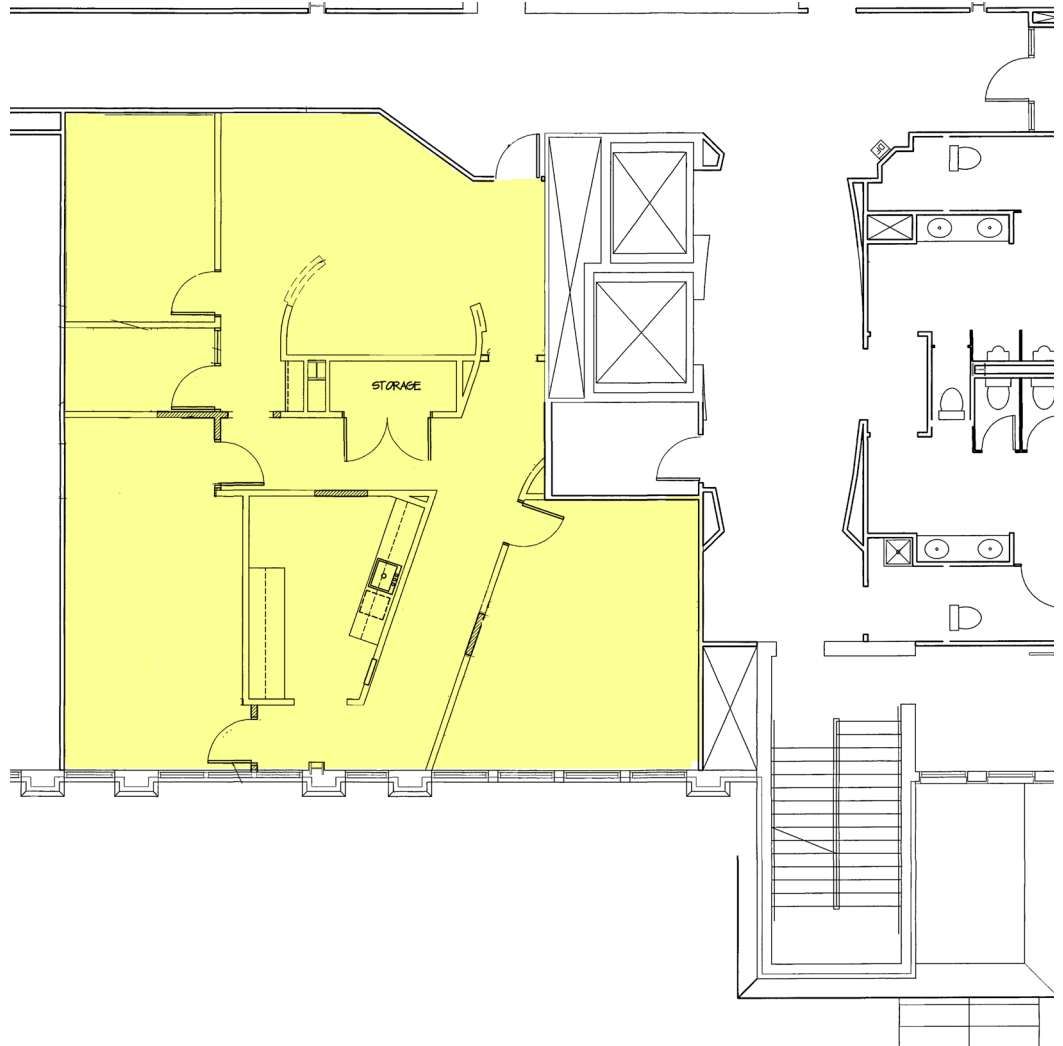
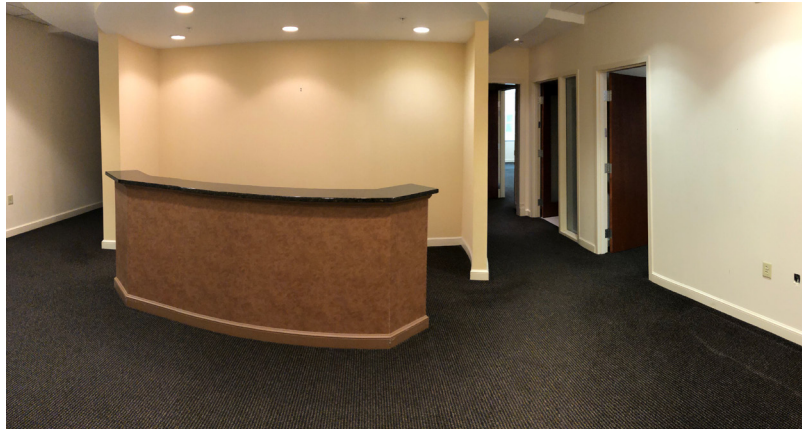


INFORMATION INCLUDED OR REFERRED TO HEREIN IS FURNISHED BY 3RD PARTIES & IS NOT GUARANTEED AS TO ITS ACCURACY OR COMPLETENESS. ALL INFORMATION INCLUDED OR REFERRED TO HEREIN IS CONFIDENTIAL & FURNISHED SOLELY FOR THE PURPOSE OF YOUR REVIEW IN CONNECTION WITH A POTENTIAL PURCHASE/LEASE OF THE SUBJECT PROPERTY(IES), AS APPLICABLE. INDEPENDENT ESTIMATES OF PROFORMA INCOME & EXPENSES SHOULD BE DEVELOPED BY YOU BEFORE ANY DECISION IS MADE ON WHETHER TO MAKE ANY PURCHASE.

4607 Cleveland Ave NW
Canton, Ohio 44709
+1 330 966 8800
naispring.com

Sq Ft	Sq Ft Rate	CAM	Total Monthly Rate
1,692	\$16.25	\$3.78	\$2,824.23

For Lease
Millennium Center
2nd Floor 1,692 SF

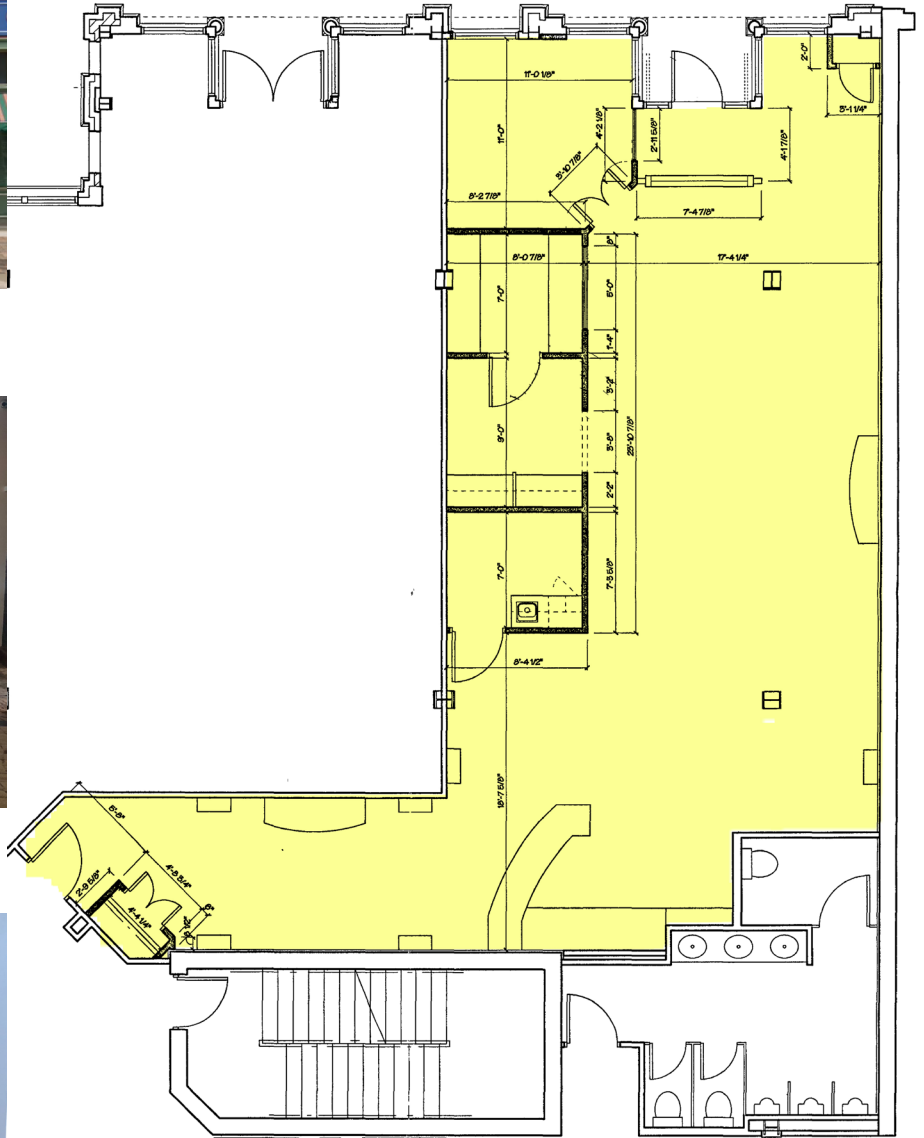
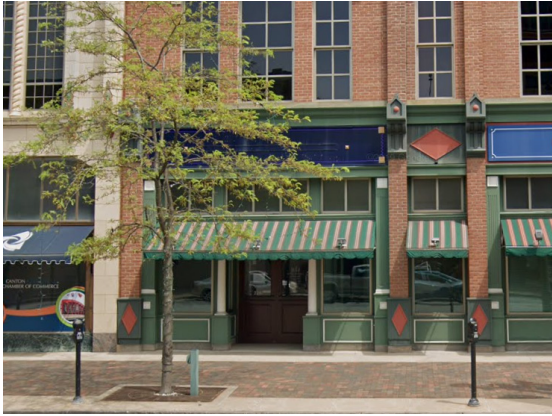


INFORMATION INCLUDED OR REFERRED TO HEREIN IS FURNISHED BY 3RD PARTIES & IS NOT GUARANTEED AS TO ITS ACCURACY OR COMPLETENESS. ALL INFORMATION INCLUDED OR REFERRED TO HEREIN IS CONFIDENTIAL & FURNISHED SOLELY FOR THE PURPOSE OF YOUR REVIEW IN CONNECTION WITH A POTENTIAL PURCHASE/LEASE OF THE SUBJECT PROPERTY(IES), AS APPLICABLE. INDEPENDENT ESTIMATES OF PROFORMA INCOME & EXPENSES SHOULD BE DEVELOPED BY YOU BEFORE ANY DECISION IS MADE ON WHETHER TO MAKE ANY PURCHASE.

4607 Cleveland Ave NW
Canton, Ohio 44709
+1 330 966 8800
naispring.com

Sq Ft	Sq Ft Rate	CAM	Total Monthly Rate
1,550	\$15.25	\$3.78	\$2,458.04

For Lease
Millennium Center
1st Floor 1,550 SF



INFORMATION INCLUDED OR REFERRED TO HEREIN IS FURNISHED BY 3RD PARTIES & IS NOT GUARANTEED AS TO ITS ACCURACY OR COMPLETENESS. ALL INFORMATION INCLUDED OR REFERRED TO HEREIN IS CONFIDENTIAL & FURNISHED SOLELY FOR THE PURPOSE OF YOUR REVIEW IN CONNECTION WITH A POTENTIAL PURCHASE/LEASE OF THE SUBJECT PROPERTY(IES), AS APPLICABLE. INDEPENDENT ESTIMATES OF PROFORMA INCOME & EXPENSES SHOULD BE DEVELOPED BY YOU BEFORE ANY DECISION IS MADE ON WHETHER TO MAKE ANY PURCHASE.

4607 Cleveland Ave NW
Canton, Ohio 44709
+1 330 966 8800
naispring.com