

1217 Route One South

(aka 106 Townsley Street)

Edison, New Jersey

Property Features

- ±9,906 sq. ft. two-story retail building for sale or lease
- Pylon signage available
- Strategically located on Route 1 South, at the entrance ramp to Route 287
- Heavily travelled retail corridor with traffic counts exceeding 96,000 Vehicles per day
- Located in densely populated area
- 193 ft. frontage along Route 1 South with two curb cuts for ingress/egress
- Space is currently configured as two retail units
 - Unit 1:** ±2,500 sq. ft. available on first floor
 - Unit 2:** ±7,400 sq. ft. available on two floors



For Further Information Please Contact Exclusive Broker:

1315 Stelton Road
Piscataway, NJ 08854
732 985 3000 | naidb.com

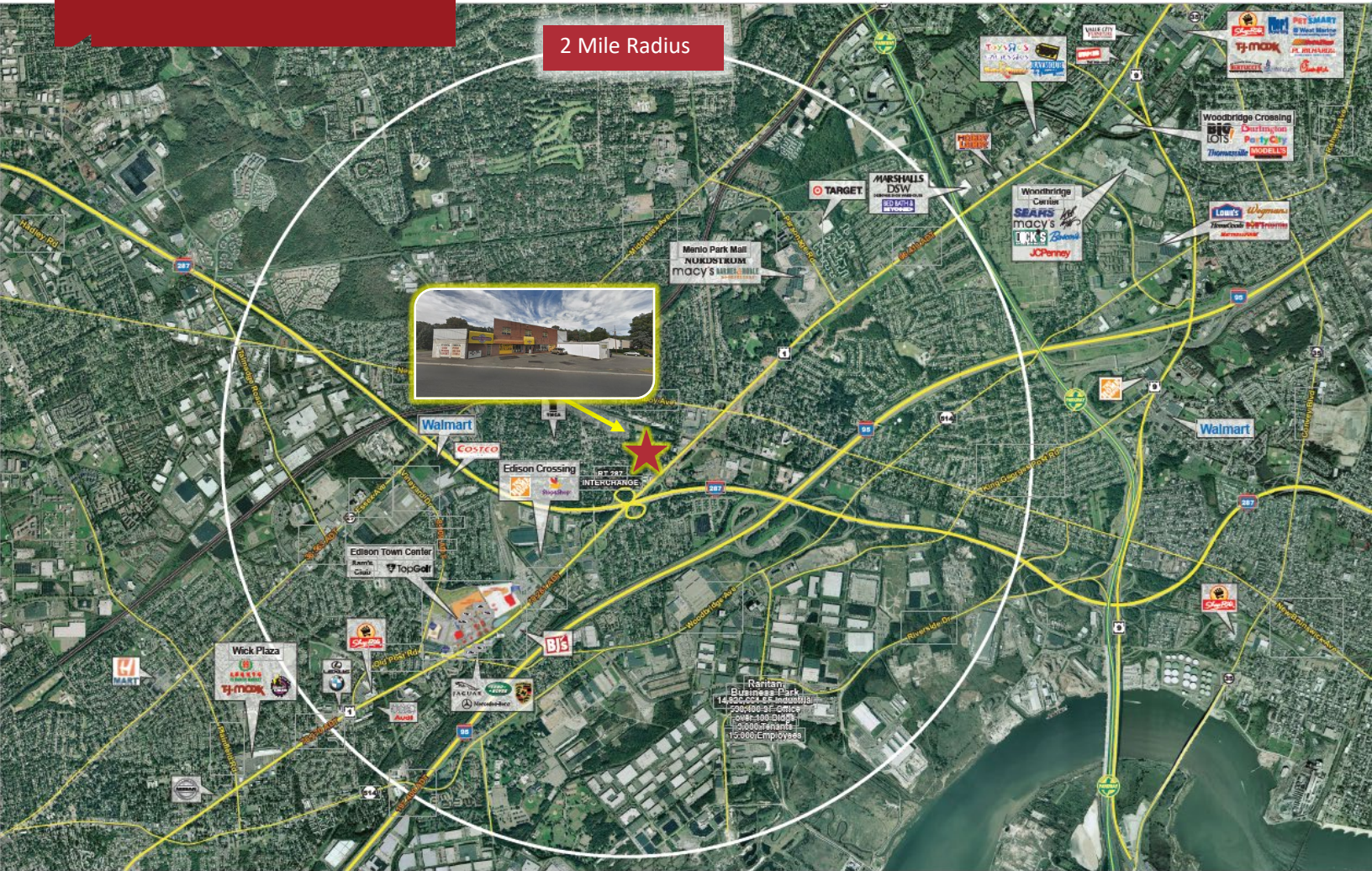
Christopher Galiano, SIOR
Managing Director

732 985 3000 ext. 202
cgaliano@naidb.com

Kelly Bayer
Associate Vice President

732 985 3000 ext. 222
kbayer@naidb.com

Retail Space For Sale or Lease



AREA DEMOGRAPHICS

	1 Mile	3 Miles	5 Miles
2020 Population	12,058	95,806	312,581
2020 Total Households	4,832	35,521	109,337
2020 Avg. Household Income	\$93,243	\$92,076	\$85,011

For Further Information Please Contact Exclusive Broker:

Christopher Galiano, SIOR
Managing Director

732 985 3000 ext. 202
cgaliano@naidb.com

Kelly Bayer
Associate Vice President

732 985 3000 ext. 222
kbayer@naidb.com

NAI DiLeo-Bram & Co.

Commercial Real Estate Services, Worldwide.

1315 Stelton Road
Piscataway, NJ 08854
732 985 3000 | naidb.com

The information contained herein has been given to us by the owner of the property or other sources we deem reliable. We have no reason to doubt its accuracy, but we do not guarantee it. All information should be verified prior to purchase or lease