



## JOIN THESE RETAILERS

macy's



LA|FITNESS

SAFeway

## RETAIL FOR LEASE

- Be a part of Sears redevelopment building in Bowie, MD
- Located near Route 301 and Route 50, Bowie Town Center attracts visitors from communities of Bowie, Crofton, Lanham and Davidsonville
- Featuring over 70 top-retailers including Macy's, Barnes & Noble, DuClaw Brewery and more
- Available space is 2 stories
- Loading dock is on the ground floor
- Site includes detached auto center

## OWNED & MANAGED BY:

**SERITAGE**  
GROWTH PROPERTIES

[www.seritage.com](http://www.seritage.com)

**BRIAN FINKELSTEIN**

[bfinkelstein@klnb.com](mailto:bfinkelstein@klnb.com) | 443-632-2076

**JOHN MEYER**

[jmeyer@klnb.com](mailto:jmeyer@klnb.com) | 443-632-2052

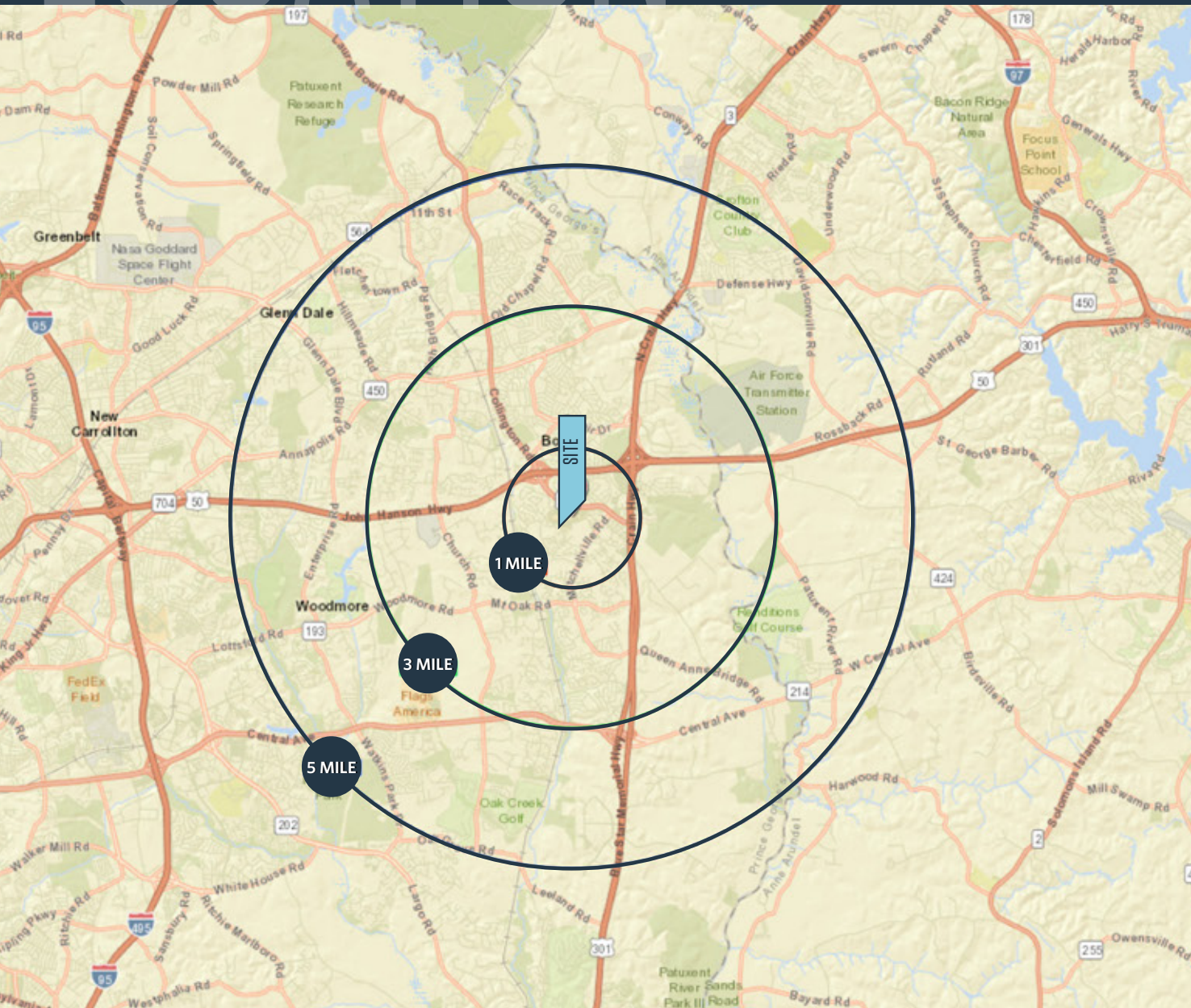
**klnb.com**



# LOCATION

## BOWIE TOWN CENTER - SEARS REDEVELOPMENT

15606 EMERALD WAY, BOWIE, MD 20716



### DEMOGRAPHICS | 2018:

1-MILE	3-MILE	5-MILE
Population		
12,068	48,997	107,105
Daytime Population		
6,835	18,010	35,807
Households		
4,993	17,519	37,661
Average HH Income		
\$113,261	\$135,570	\$143,398

[CLICK TO DOWNLOAD DEMOGRAPHIC REPORT](#)

### TRAFFIC COUNTS | 2016:

Northview Drive	20,275 ADT
Collington Road (Rt. 197)	18,070 ADT

**BRIAN FINKELSTEIN**

bfinkelstein@klnb.com | 443-632-2076

**JOHN MEYER**

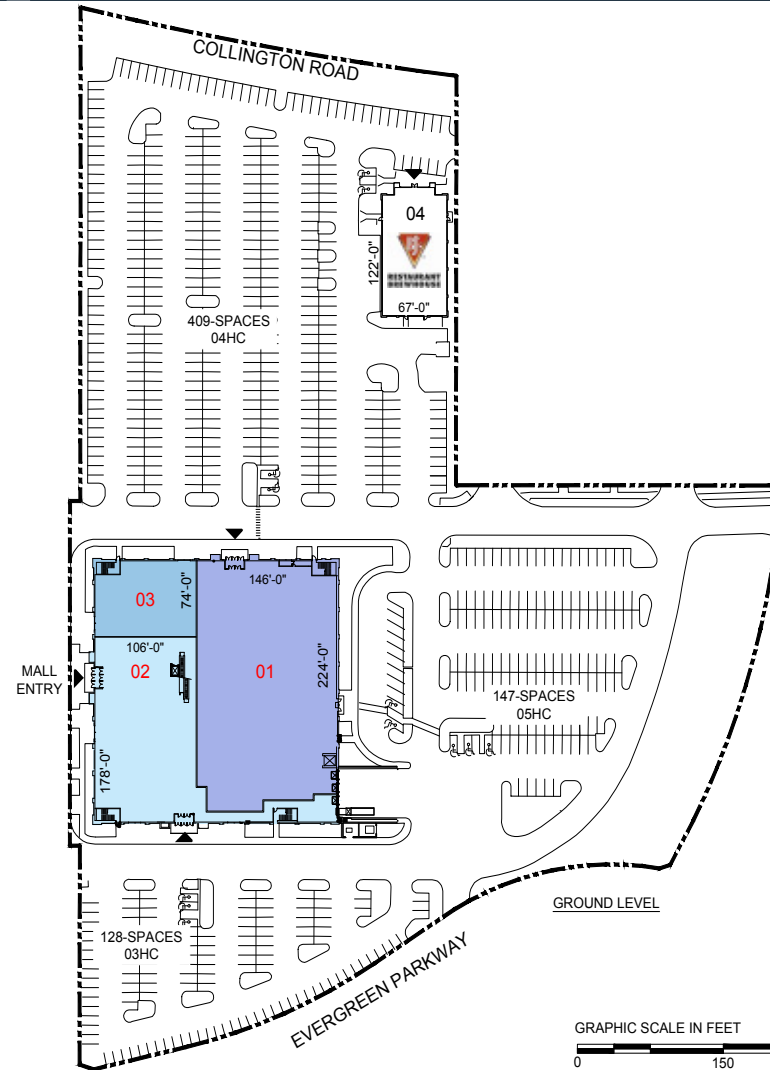
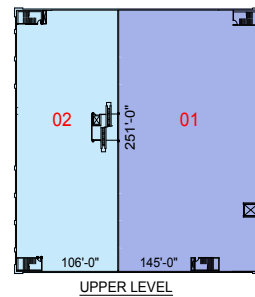
jmeyer@klnb.com | 443-632-2052

**klnb**

# SITE PLAN

## BOWIE TOWN CENTER - SEARS REDEVELOPMENT

15606 EMERALD WAY, BOWIE, MD 20716



BOWIE, MD - 133,800 SF

- 01 AVAILABLE 70,300 SF
- 02 AVAILABLE 48,250 SF
- 03 AVAILABLE 7,750 SF

- 04 BJ'S RESTAURANT 7,500 SF

**BRIAN FINKELSTEIN**

bfinkelstein@klnb.com | 443-632-2076

**JOHN MEYER**

jmeyer@klnb.com | 443-632-2052

**klnb**



# AERIAL

## BOWIE TOWN CENTER - SEARS REDEVELOPMENT

15606 EMERALD WAY, BOWIE, MD 20716



**BRIAN FINKELSTEIN**

bfinkelstein@klnb.com | 443-632-2076

**JOHN MEYER**

jmeyer@klnb.com | 443-632-2052

**klnb**







# BOWIE TOWN CENTER - SEARS REDEVELOPMENT

15606 EMERALD WAY, BOWIE, MD 20716

## FOR MORE INFORMATION, PLEASE CONTACT:

### BRIAN FINKELSTEIN

bfinkelstein@klnb.com  
443-632-2076

### JOHN MEYER

jmeyer@klnb.com  
443-632-2052

100 West Road, Suite 505, Towson, MD 21204

.....

## klnb.com



**CLICK TO VIEW PROPERTY WEBSITE**

While we have no reason to doubt the accuracy of any of the information supplied, we cannot, and do not, guarantee its accuracy. All information should be independently verified prior to a purchase or lease of the property. We are not responsible for errors, omissions, misuse, or misinterpretation of information contained herein and make no warranty of any kind, express or implied, with respect to the property or any other matters.