

# TAKOMA PARK SHOPPING CENTER

8750 Arliss Street, Silver Spring, MD 20901  
Montgomery County



JOIN:



- 51,000 SF neighborhood grocery center well located immediately off of the Piney Branch Road and Flower Avenue intersection in the dense neighborhood of Takoma Park, MD.
- Located just west (.3 mi) of University Blvd (Rt. 193)
- Ingress/egress to and from the shopping center is via Arliss Street

**Mason Bernstein**  
mbernstein@klnb.com  
443-632-2089

**Michael Patz**  
mpatz@klnb.com  
443-632-2043

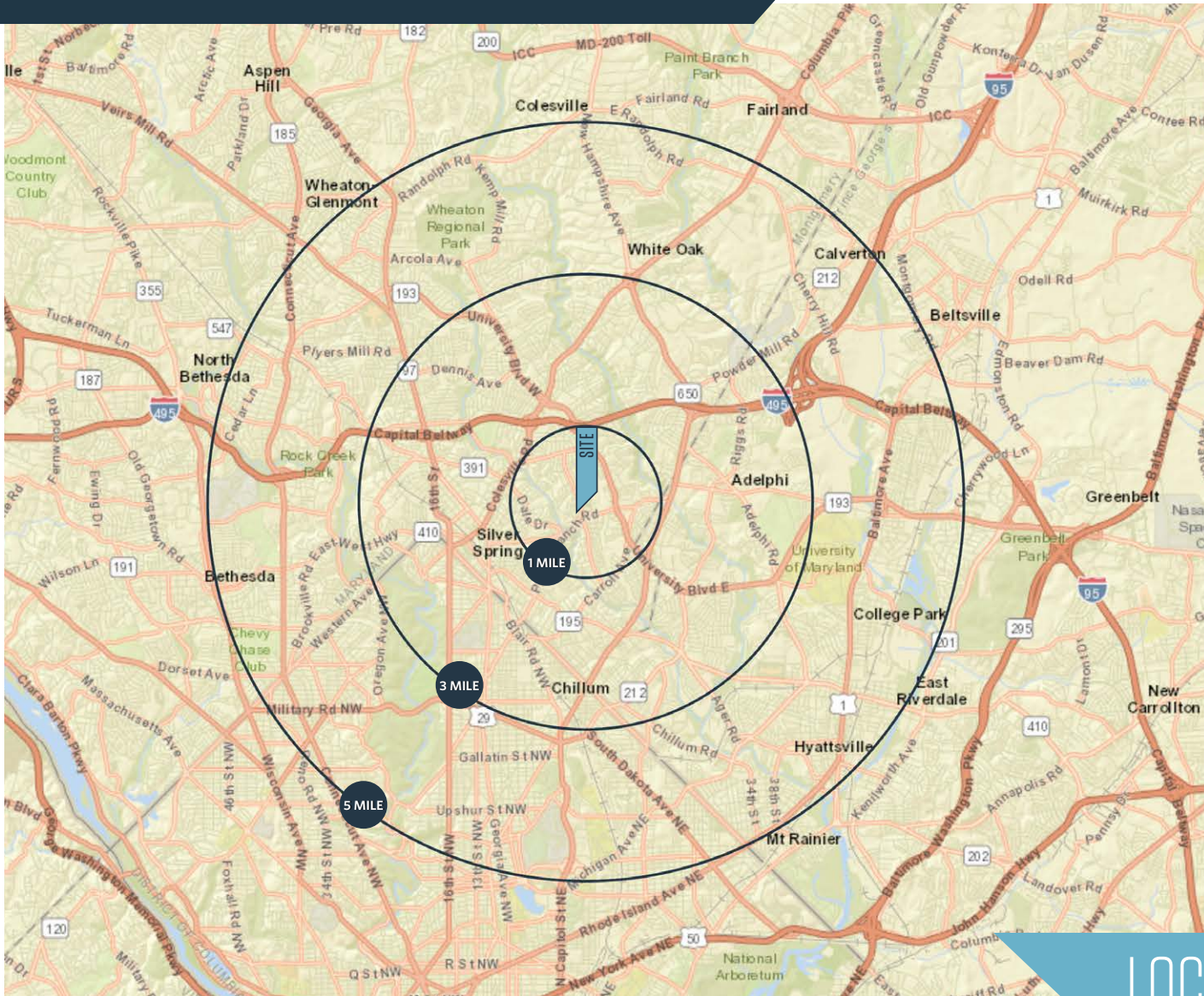
**Jake Levin**  
jlevin@klnb.com  
202-909-6102

OWNED & MANAGED BY:  
**WASH\*REIT**

**klnb**

# TAKOMA PARK SHOPPING CENTER

8750 Arliss Street, Silver Spring, MD 20901  
Montgomery County



## DEMOGRAPHICS | 2018:

	1-MILE	3-MILE	5-MILE
Population	36,086	232,368	546,151
Daytime Population	5,051	72,115	219,355
Households	12,560	83,958	198,934
Average HH Income	\$93,290	\$101,521	\$112,946

[CLICK TO DOWNLOAD DEMOGRAPHIC REPORT](#)

## TRAFFIC COUNTS | 2018:

Piney Branch Road	27,644 ADT
Flowers Avenue	10,214 ADT

## LOCATION & DEMOGRAPHICS

**Mason Bernstein**  
mbernstein@klnb.com  
443-632-2089

**Michael Patz**  
mpatz@klnb.com  
443-632-2043

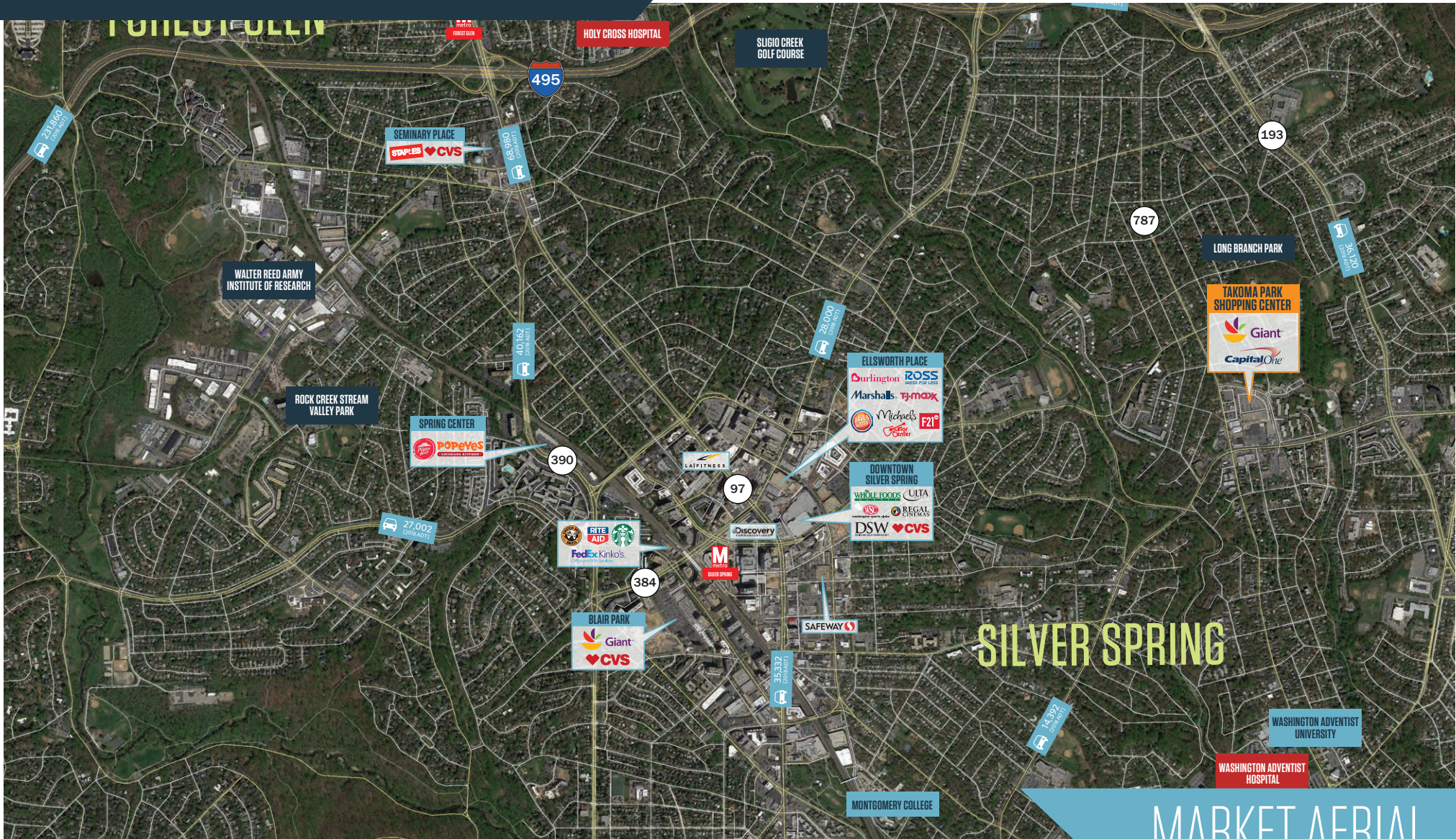
**Jake Levin**  
jlevin@klnb.com  
202-909-6102

100 West Road, Suite 505  
Towson, MD 21204  
**klnb.com**



# TAKOMA PARK SHOPPING CENTER

8750 Arliss Street, Silver Spring, MD 20901  
Montgomery County



MARKET AERIAL

Mason Bernstein  
mbernstein@klnb.com  
443-632-2089

Michael Patz  
mpatz@klnb.com  
443-632-2043

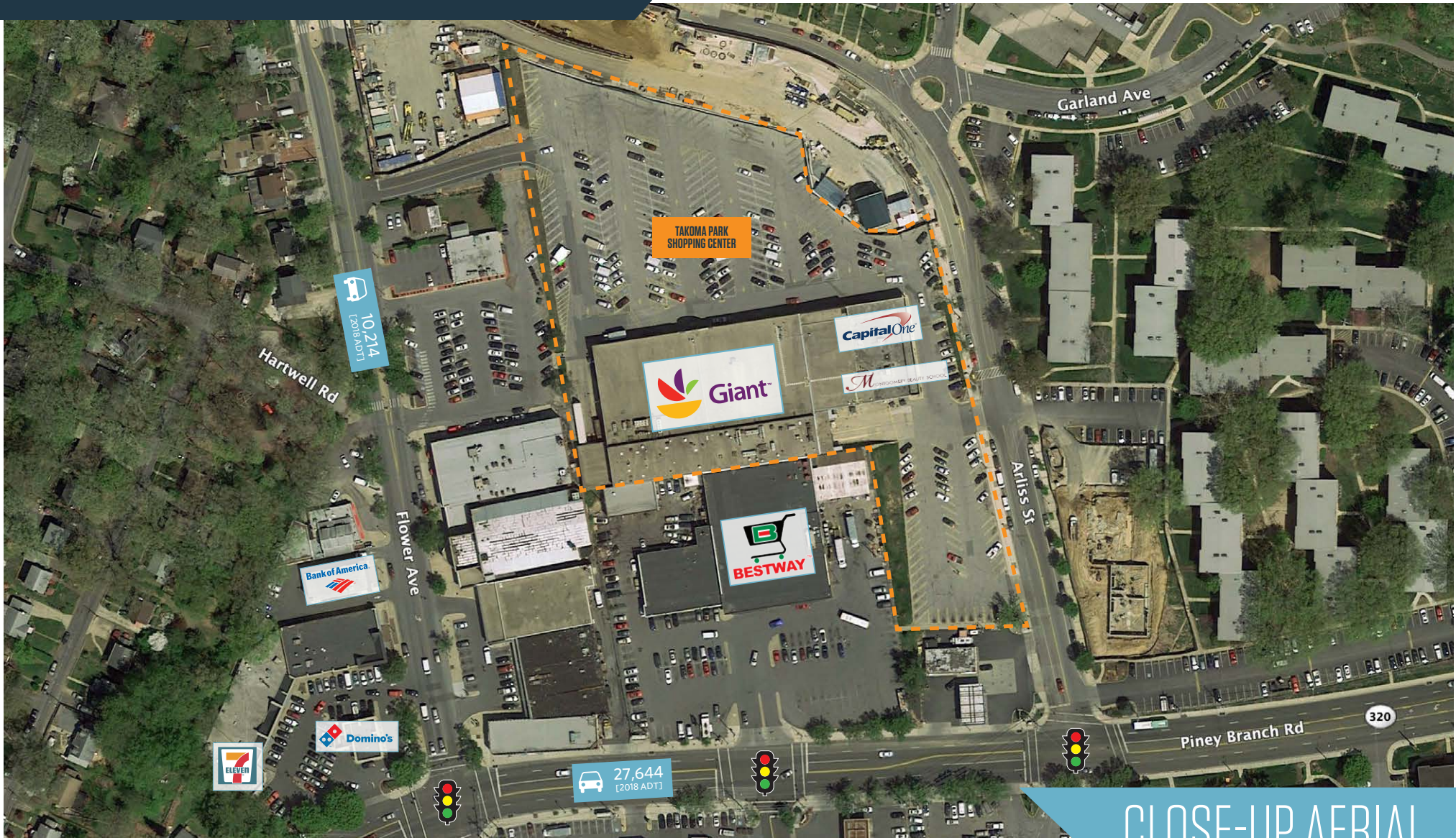
Jake Levin  
jlevin@klnb.com  
202-909-6102

100 West Road, Suite 505  
Towson, MD 21204  
klnb.com



# TAKOMA PARK SHOPPING CENTER

8750 Arliss Street, Silver Spring, MD 20901  
Montgomery County



CLOSE-UP AERIAL

Mason Bernstein  
mbernstein@klnb.com  
443-632-2089

Michael Patz  
mpatz@klnb.com  
443-632-2043

Jake Levin  
jlevin@klnb.com  
202-909-6102

100 West Road, Suite 505  
Towson, MD 21204  
klnb.com

klnb

# TAKOMA PARK SHOPPING CENTER

8750 Arliss Street, Silver Spring, MD 20901  
Montgomery County



## SITE PLAN

**Mason Bernstein**  
mbernstein@klnb.com  
443-632-2089

**Michael Patz**  
mpatz@klnb.com  
443-632-2043

**Jake Levin**  
jlevin@klnb.com  
202-909-6102

100 West Road, Suite 505  
Towson, MD 21204  
**klnb.com**



# TAKOMA PARK SHOPPING CENTER

8750 Arliss Street, Silver Spring, MD 20901  
Montgomery County

[CLICK TO VIEW PROPERTY WEBSITE](#)

For More Information, Please Contact:

**Mason Bernstein**

mbernstein@klnb.com  
443-632-2089

**Michael Patz**

mpatz@klnb.com  
443-632-2043

**Jake Levin**

jlevin@klnb.com  
202-909-6102

100 West Road, Suite 505  
Towson, MD 21204

[klnb.com](http://klnb.com)

 [facebook.com/KLNB](https://facebook.com/KLNB)

 [@KLNBLLC](https://twitter.com/KLNBLLC)

 [linkedin.com/company/klnb](https://linkedin.com/company/klnb)

 [instagram.com/klnbllc](https://instagram.com/klnbllc)

While we have no reason to doubt the accuracy of any of the information supplied, we cannot, and do not, guarantee its accuracy. All information should be independently verified prior to a purchase or lease of the property. We are not responsible for errors, omissions, misuse, or misinterpretation of information contained herein and make no warranty of any kind, express or implied, with respect to the property or any other matters.

**klnb**