



PROPERTY HIGHLIGHTS:

ASKING PRICE: \$2.1 Million

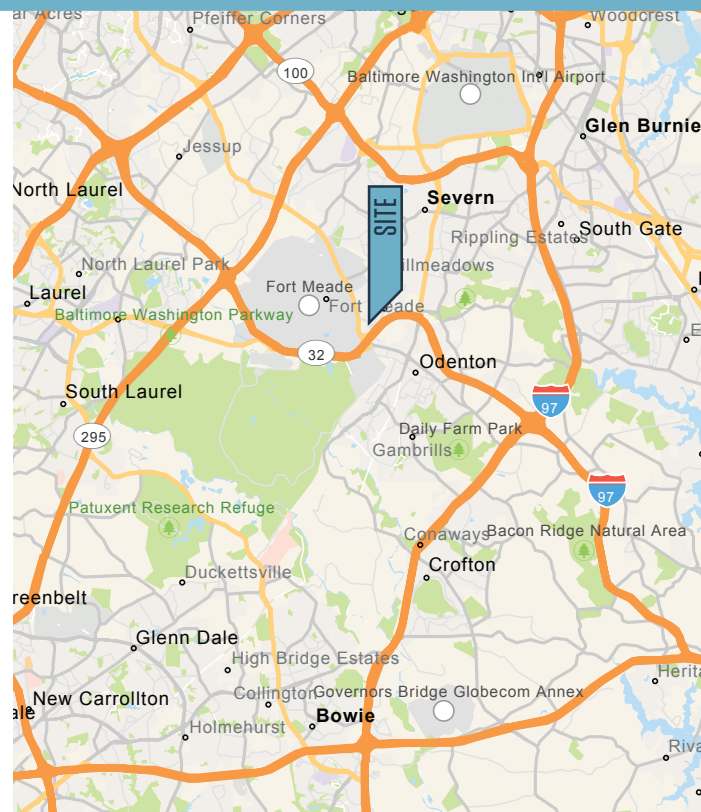
OFFICE

- 5,746 SF office building
- Private glass-lined office on perimeter
- Open work space in the center
- Kitchenette
- Copy/file room
- Ample parking

WAREHOUSE

- 4,800 SF warehouse
- Fenced yard
- 1/2 mile to MD Route 32
- Located across from Fort Meade / NSA
- O-NOD zoning with non-conforming use letter issued by Anne Arundel County allowing for C-4 uses and contractors yard
- Located near Odenton Town Center

FOR SALE



1490 ANNAPOLIS ROAD

Odenton, MD 21113 | Anne Arundel County

PHOTOS



STORAGE AREA



WAREHOUSE



STORAGE AREA



INSIDE WAREHOUSE



STORAGE AREA



CONFERENCE ROOM

Michael Moran
mmoran@klnb.com
443-574-1402

PHOTOS



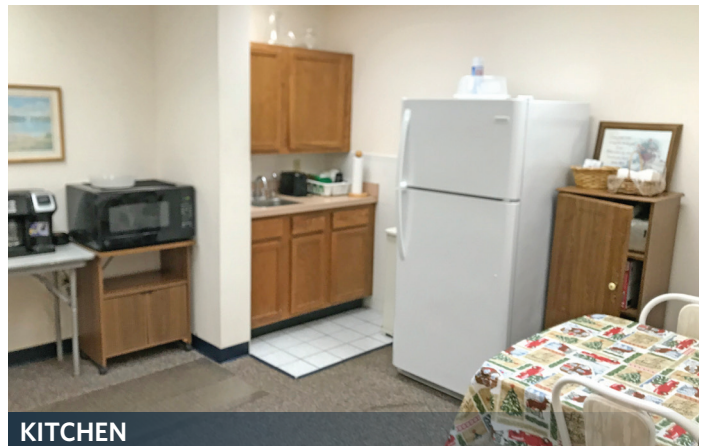
OFFICE



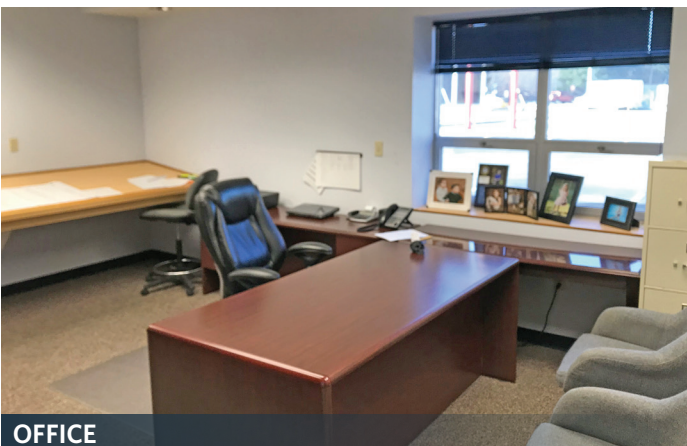
OPEN BULL PEN



OFFICE



KITCHEN



OFFICE



RECEPTION AREA

1490 ANNAPOLIS ROAD

Odenton, MD 21113 | Anne Arundel County



MARKET AERIAL



While we have no reason to doubt the accuracy of any of the information supplied, we cannot, and do not, guarantee its accuracy. All information should be independently verified prior to a purchase or lease of the property. We are not responsible for errors, omissions, misuse, or misinterpretation of information contained herein and make no warranty of any kind, express or implied, with respect to the property or any other matters.

Michael Moran
mmoran@klnb.com
443-574-1402

9881 Broken Land Pkwy, Suite 300
Columbia, MD 21046
klnb.com