



JOIN THESE RETAILERS



LAND FOR SALE

- 4.14 acres available along Pulaski Highway (Rt. 40)
- Excellent access and visibility
- Regionally located in the county seat
- Signalized ingress and egress
- Zoned C-2

COOPER HENRY

chenry@klnb.com | 443-632-2085

MICHAEL PATZ

mpatz@klnb.com | 443-632-2043

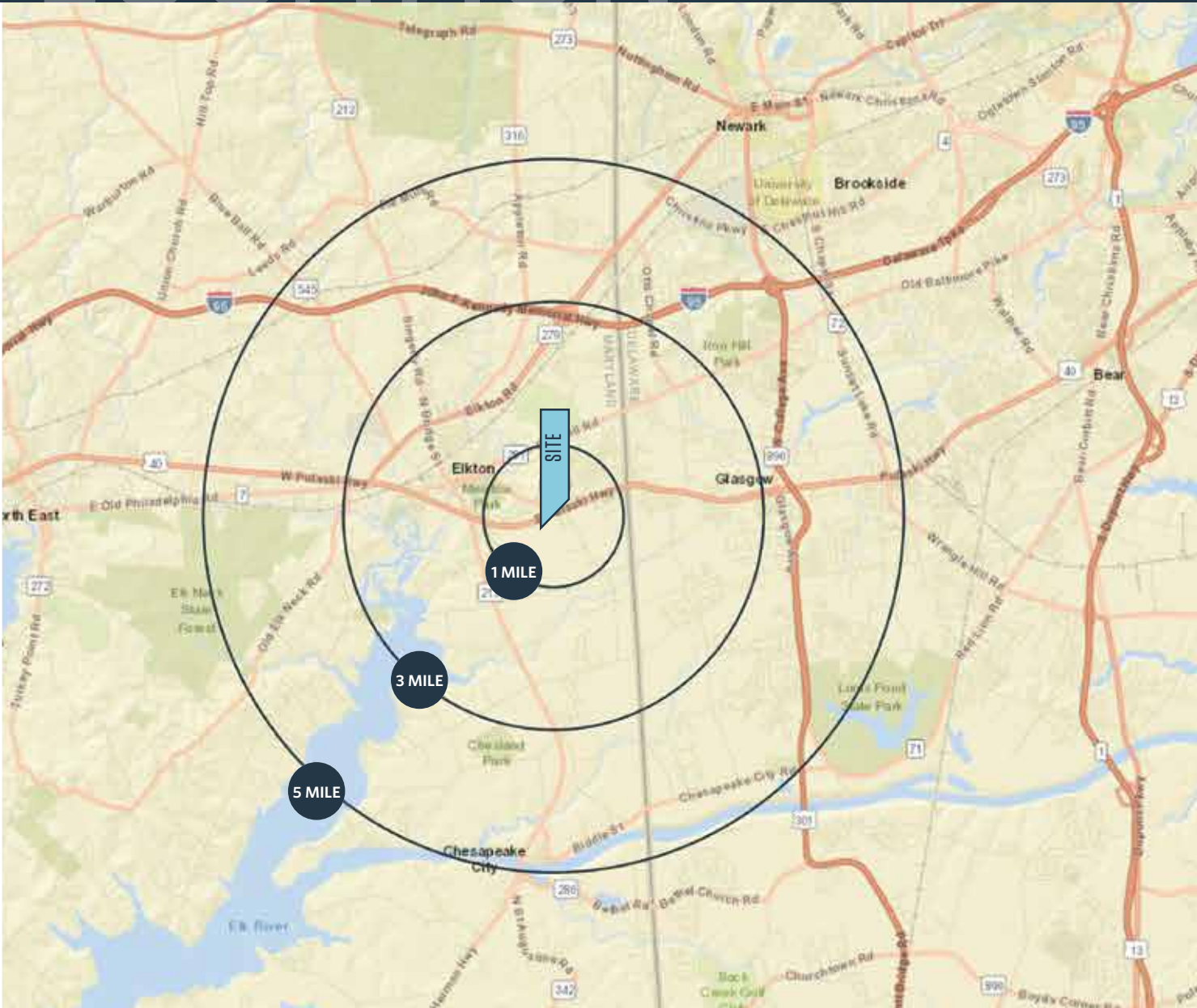
DIMITRI GEORGELAKOS

dgeorgelakos@klnb.com | 703-268-2710

LOCATION

PULASKI HIGHWAY

ELKTON, MD 21921, CECIL COUNTY



DEMOGRAPHICS | 2019:

1-MILE	3-MILE	5-MILE
Population		
5,297	28,872	66,370
Daytime Population		
3,394	15,149	29,792
Households		
1,838	10,108	24,164
Average HH Income		
\$89,176	\$94,268	\$98,254

[CLICK TO DOWNLOAD DEMOGRAPHIC REPORT](#)

TRAFFIC COUNTS | 2018:

Pulaski Hwy 30,730 ADT

COOPER HENRY

chenry@klnb.com | 443-632-2085

MICHAEL PATZ

mpatz@klnb.com | 443-632-2043

DIMITRI GEORGELAKOS

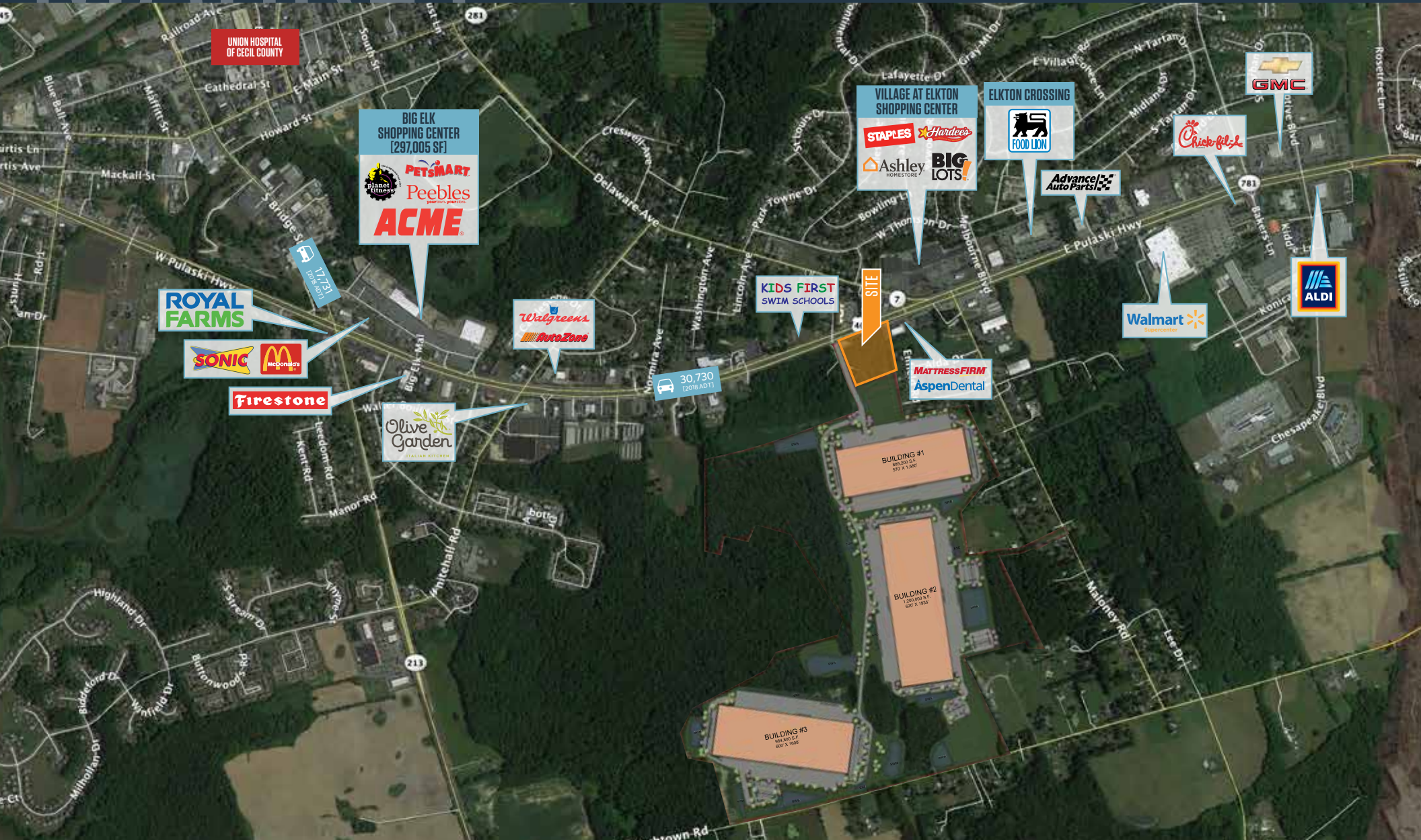
dgeorgelakos@klnb.com | 703-268-2710



MARKET

PULASKI HIGHWAY

ELKTON, MD 21921, CECIL COUNTY



COOPER HENRY

chenry@klnb.com | 443-632-2085

MICHAEL PATZ

mpatz@klnb.com | 443-632-2043

DIMITRI GEORGELAKOS

dgeorgelakos@klnb.com | 703-268-2710



CLOSE-UP

PULASKI HIGHWAY

ELKTON, MD 21921, CECIL COUNTY



COOPER HENRY

chenry@klnb.com | 443-632-2085

MICHAEL PATZ

mpatz@klnb.com | 443-632-2043

DIMITRI GEORGELAKOS

dgeorgelakos@klnb.com | 703-268-2710





PULASKI HIGHWAY

ELKTON, MD 21921, CECIL COUNTY

FOR MORE INFORMATION, PLEASE CONTACT:

COOPER HENRY

chenry@klnb.com
443-632-2085

MICHAEL PATZ

mpatz@klnb.com
443-632-2043

DIMITRI GEORGELAKOS

dgeorgelakos@klnb.com
703-268-2710

100 West Road, Suite 505, Towson, MD 21204

.....

klnb.com

 facebook.com/KLNB

 [@KLNBLLC](https://twitter.com/KLNBLLC)

 linkedin.com/company/klnb

 instagram.com/klnbllc

CLICK TO VIEW PROPERTY WEBSITE

While we have no reason to doubt the accuracy of any of the information supplied, we cannot, and do not, guarantee its accuracy. All information should be independently verified prior to a purchase or lease of the property. We are not responsible for errors, omissions, misuse, or misinterpretation of information contained herein and make no warranty of any kind, express or implied, with respect to the property or any other matters.