

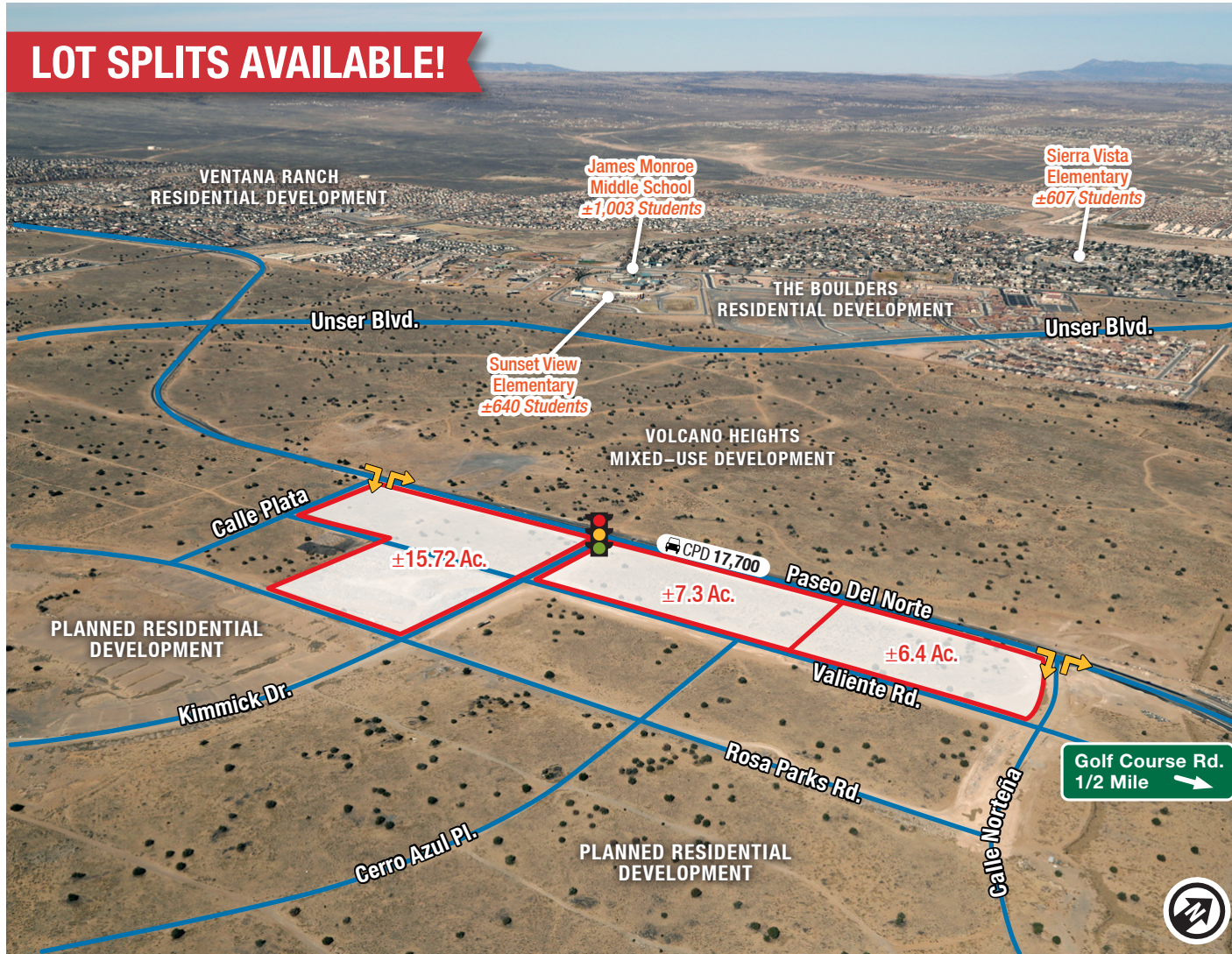
For Sale

Prime Land for Retail Development

DIRECT ACCESS TO PASEO DEL NORTE

SEC & SWC Paseo del Norte & Kimmick Dr. | Albuquerque, NM 87120

LOT SPLITS AVAILABLE!



Sale Price

- \$7.95/SF

Available

- ±2.0 to ±29.0 Acres

IDO Zoning MX-L

Property Highlights

- All infrastructure in place
- Ready for development
- All utilities to the site
- Signalized intersection
- Lot splits
- Off-site improvements are completed and included in price
- Impact fee credits available
- Centrally located to:
 - Public schools
 - Shopping
 - Residential developments

got space

NAI Maestas & Ward

6801 Jefferson NE | Suite 200 | Albuquerque, NM 87109

505 878 0001 gotSPACEUSA.com



For more information:

Jim Hakeem

jim@gotSPACEUSA.com

505 878 0006

For Sale

Prime Land for Retail Development

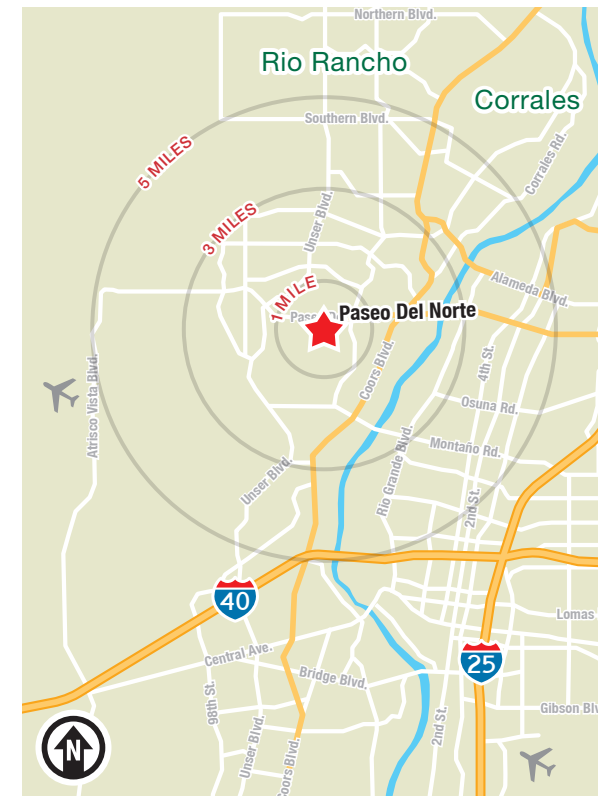
DIRECT ACCESS TO PASEO DEL NORTE

SEC & SWC Paseo del Norte & Kimmick Dr. | Albuquerque, NM 87120



LOCATION

2020 Demographics	1 mile	3 mile	5 mile
Total Population	4,672	87,614	166,892
Average HH Income	\$107,723	\$91,244	\$86,287
Daytime Employment	609	12,558	42,972
2020 Forecasted by Esri			



NAI Maestas & Ward 505 878 0001

THE INFORMATION CONTAINED IS BELIEVED RELIABLE. WHILE WE DO NOT DOUBT THE ACCURACY, WE HAVE NOT VERIFIED IT AND MAKE NO GUARANTEE, WARRANTY OR REPRESENTATION ABOUT IT. IT IS YOUR RESPONSIBILITY TO INDEPENDENTLY CONFIRM ITS ACCURACY AND COMPLETENESS. ANY PROJECTION, OPINION, ASSUMPTION OR ESTIMATED USES ARE FOR EXAMPLE ONLY AND DO NOT REPRESENT THE CURRENT OR FUTURE PERFORMANCE OF THE PROPERTY. THE VALUE OF THIS TRANSACTION TO YOU DEPENDS ON MANY FACTORS WHICH SHOULD BE EVALUATED BY YOUR TAX, FINANCIAL, AND LEGAL COUNSEL. YOU AND YOUR COUNSEL SHOULD CONDUCT A CAREFUL INDEPENDENT INVESTIGATION OF THE PROPERTY TO DETERMINE THAT IT IS SUITABLE TO YOUR NEEDS.

For more information:

Jim Hakeem

jim@gotspaceusa.com

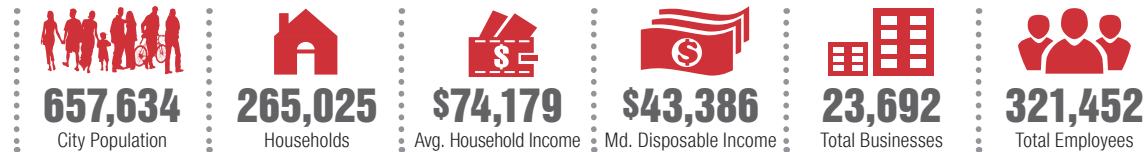
505 878 0006

Trade Area Analysis

Albuquerque | Why Here? Why Now?

Located near the geographic center of New Mexico at the intersection of I-25 and I-40 and resting at the foot of the Sandia Mountains, **Albuquerque** is the state's most populous city and one of the most livable in the U.S. The city serves as a major transportation and shipping hub for the Southwest, with BNSF Railway, air cargo from Albuquerque International Airport (Sunport), and a commuter train running from Belen to Santa Fe. Albuquerque is home to the International Balloon Fiesta, the world's largest gathering of hot-air balloons. A talented workforce, a business-friendly environment, a community rooted in history and a high quality of life make Albuquerque hard to beat.

City of Albuquerque by the Numbers (ESRI 2020 Demographics)



939,316

Albuquerque
Metro
Population

#1

**The
Largest**
City in
the State

In the News

Ranked 6th in America's favorite cities list - *Travel + Leisure*
Ranks among America's best cities for global trade - *Global Trade Magazine*
The 5th most cost-friendly city to do business in the U.S. - *KPMG*

TOP 8 REASONS TO CHOOSE ALBUQUERQUE

- Low-risk location
- Skilled workforce
- Business incentives
- The metro area communities
- Quality of life
- Cost of living
- Innovation central
- On the cutting edge of technology



HEALTHCARE

Is the center of health care excellence in NM. University of NM is a nationally recognized Class 1 research institution. There are 1,943 licensed hospital beds in metro area



EDUCATION | SKILLED WORKFORCE

Ranks top in nation for cities with the most college graduates, 69,000 college students reside in metro area, has one of the largest number of PhD's per capita in the nation



COMPETITIVE BUSINESS CLIMATE

Low energy costs, low property taxes, affordable real estate and cost of living, a qualified/productive workforce, aggressive incentives, efficient market access

CITY OF Albuquerque

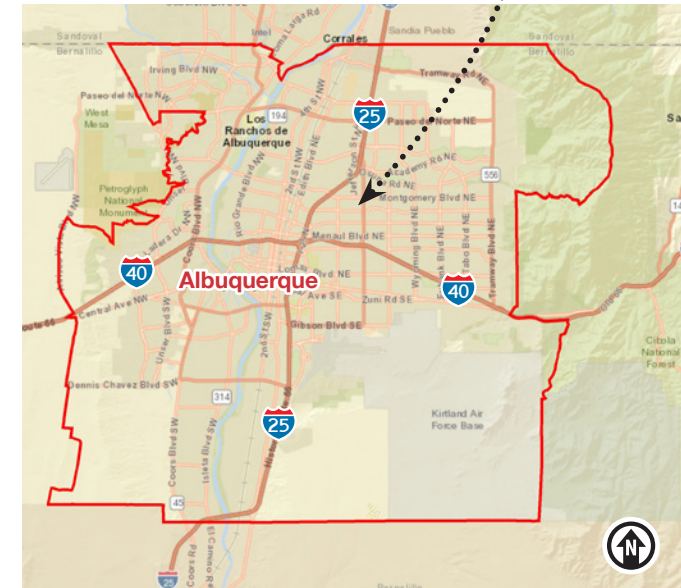
NEW MEXICO



ALBUQUERQUE METRO



ALBUQUERQUE CITY



NAI Maestas & Ward 505 878 0001

THE INFORMATION CONTAINED IS BELIEVED RELIABLE. WHILE WE DO NOT DOUBT THE ACCURACY, WE HAVE NOT VERIFIED IT AND MAKE NO GUARANTEE, WARRANTY OR REPRESENTATION ABOUT IT. IT IS YOUR RESPONSIBILITY TO INDEPENDENTLY CONFIRM ITS ACCURACY AND COMPLETENESS. ANY PROJECTION, OPINION, ASSUMPTION OR ESTIMATED USES ARE FOR EXAMPLE ONLY AND DO NOT REPRESENT THE CURRENT OR FUTURE PERFORMANCE OF THE PROPERTY. THE VALUE OF THIS TRANSACTION TO YOU DEPENDS ON MANY FACTORS WHICH SHOULD BE EVALUATED BY YOUR TAX, FINANCIAL, AND LEGAL COUNSEL. YOU AND YOUR COUNSEL SHOULD CONDUCT A CAREFUL INDEPENDENT INVESTIGATION OF THE PROPERTY TO DETERMINE THAT IT IS SUITABLE TO YOUR NEEDS.

For more information:

Jim Hakeem
jim@gotspaceusa.com
505 878 0006