

For Lease
Retail/Flex Space
2,110± SF | \$8.50/SF NNN



Retail/Flex Space

6 Pomerleau Street
Biddeford, Maine

Property Highlights

- One (1) drive-in door
- First floor space
- Traffic counts of 19,130± vehicles per day



Property Description

We are pleased to offer 2,110± SF of retail/flex space for lease at 6 Pomerleau Street in Biddeford. Located just off Alfred Street/ Route 111, 6 Pomerleau Street offers excellent visibility and access.

Broker Contact

TC Haffenreffer

Sylas Hatch

tc@dunhamgroup.com

shatch@dunhamgroup.com

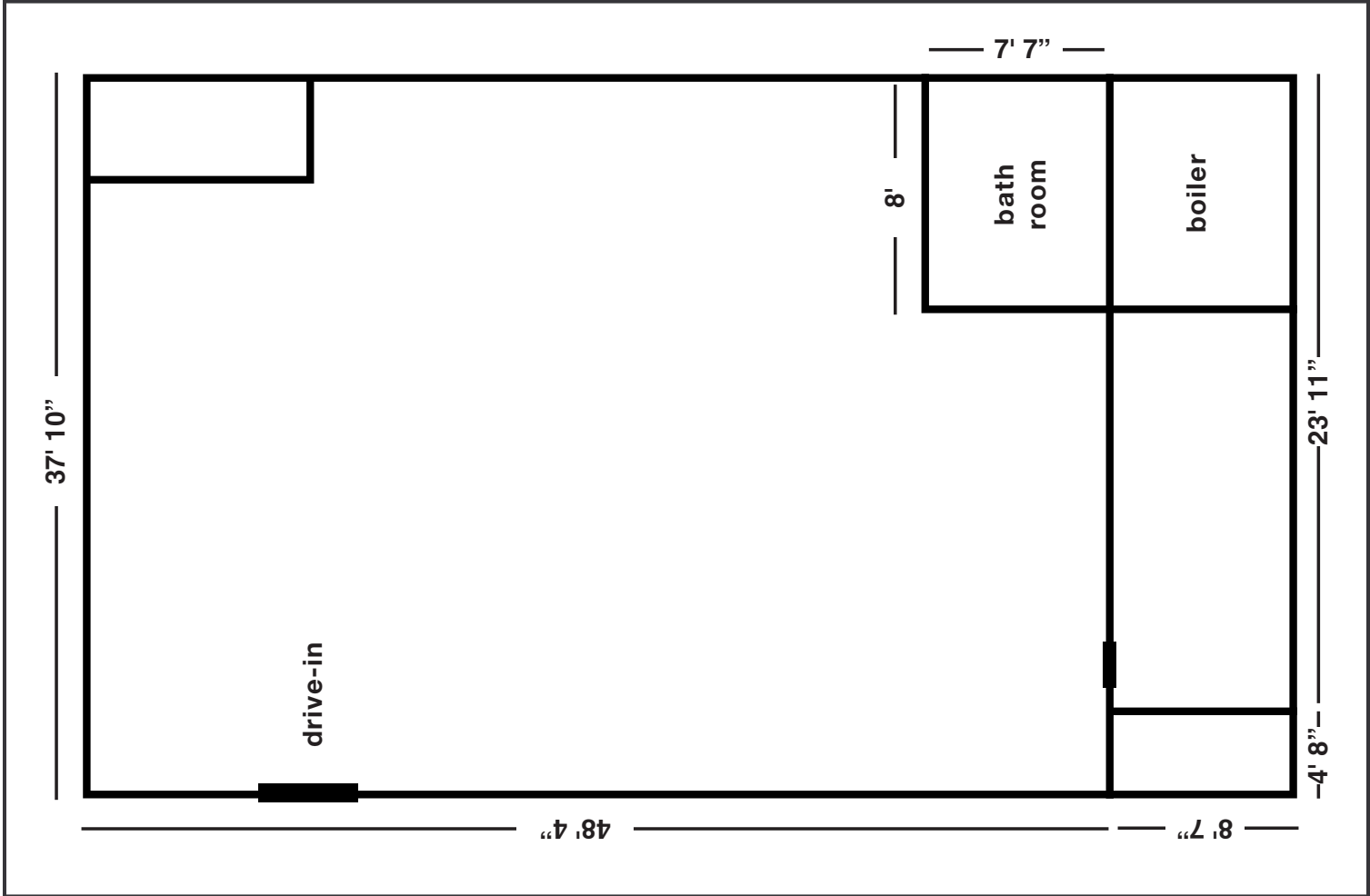
Property Overview

Owner	Plastic Supply
Building Size	9,900± SF
Assessor's Reference	Map 2, Lot 86
Zoning	Industrial (I-3)
Available Lease Space	2,110± SF - First floor
Construction	Masonry
Roof	Rubber membrane
Flooring	Finished concrete
Utilities	Municipal water and sewer
Overhead Door	One (1)
Bathroom	One (1)
Parking	15-20± paved spaces on-site
Accessibility	Less than 1± mile from Maine Turnpike/I-95 Exit 32

FOR LEASE : \$8.50/SF NNN
Estimated NNN Expenses : \$3.50/SF



6 Pomerleau Street



The information contained herein has been given to us by the owner of the property or other sources we deem reliable. We have no reason to doubt its accuracy, but we do not guarantee it. All information should be verified prior to purchase or lease.