

FOR LEASE

2945 Rodeo Park Dr. E. | Santa Fe, NM 87505

SWQ I-25 & Rodeo Rd.

Professional Office Space

GENEROUSLY-SIZED
OFFICE SUITES

IT'S YOURS!



LEASE RATE

- \$18.00/SF Full Service

AVAILABLE

- Suite 5-A: ±1,387 SF
- Suite 5-B: ±1,218 SF
- Suite 6-A: ±1,400 SF
- Suite 1-A: ±580 SF

PROPERTY HIGHLIGHTS

- Strategically located near the major intersection of St. Francis Dr. & I-25
- Convenient access to I-25
- Close proximity to Rail Runner Station
- Excellent visibility and exposure from I-25
- Flexible floor plan
- ADA compliant
- Plentiful parking

got space

NAI SunVista

418 Cerrillos Rd. | Suite 11 | Santa Fe, NM 87501

505 988 8081 sunvista.com



FOR MORE INFORMATION:

Carlos Garcia

carlos@sunvista.com

505 670 3181

Joel Cumplido

joel@sunvista.com

505 670 3328

FOR LEASE

2945 Rodeo Park Dr. E. | Santa Fe, NM 87505

SWQ I-25 & Rodeo Rd.

Professional Office Space

GENEROUSLY-SIZED
OFFICE SUITES



| 2020 Demographics | 1 mile | 3 mile | 5 mile |
|-------------------------|----------|----------|----------|
| Total Population | 4,793 | 39,361 | 83,576 |
| Average HH Income | \$81,572 | \$77,693 | \$81,999 |
| Daytime Employment | 2,805 | 41,926 | 75,647 |
| 2020 Forecasted by Esri | | | |



NA SunVista 505 988 8081 sunvista.com

THE INFORMATION CONTAINED IS BELIEVED RELIABLE. WHILE WE DO NOT DOUBT THE ACCURACY, WE HAVE NOT VERIFIED IT AND MAKE NO GUARANTEE, WARRANTY OR REPRESENTATION ABOUT IT. IT IS YOUR RESPONSIBILITY TO INDEPENDENTLY CONFIRM ITS ACCURACY AND COMPLETENESS. ANY PROJECTION, OPINION, ASSUMPTION OR ESTIMATED USES ARE FOR EXAMPLE ONLY AND DO NOT REPRESENT THE CURRENT OR FUTURE PERFORMANCE OF THE PROPERTY. THE VALUE OF THIS TRANSACTION TO YOU DEPENDS ON MANY FACTORS WHICH SHOULD BE EVALUATED BY YOUR TAX, FINANCIAL, AND LEGAL COUNSEL. YOU AND YOUR COUNSEL SHOULD CONDUCT A CAREFUL INDEPENDENT INVESTIGATION OF THE PROPERTY TO DETERMINE THAT IT IS SUITABLE TO YOUR NEEDS.

FOR MORE INFORMATION:

Carlos Garcia
carlos@sunvista.com
505 670 3181

Joel Cumplido
joel@sunvista.com
505 670 3328

FOR LEASE

2945 Rodeo Park Dr. E. | Santa Fe, NM 87505

SWQ I-25 & Rodeo Rd.

Professional Office Space

GENEROUSLY-SIZED
OFFICE SUITES



NA SunVista 505 988 8081 sunvista.com

THE INFORMATION CONTAINED IS BELIEVED RELIABLE. WHILE WE DO NOT DOUBT THE ACCURACY, WE HAVE NOT VERIFIED IT AND MAKE NO GUARANTEE, WARRANTY OR REPRESENTATION ABOUT IT. IT IS YOUR RESPONSIBILITY TO INDEPENDENTLY CONFIRM ITS ACCURACY AND COMPLETENESS. ANY PROJECTION, OPINION, ASSUMPTION OR ESTIMATED USES ARE FOR EXAMPLE ONLY AND DO NOT REPRESENT THE CURRENT OR FUTURE PERFORMANCE OF THE PROPERTY. THE VALUE OF THIS TRANSACTION TO YOU DEPENDS ON MANY FACTORS WHICH SHOULD BE EVALUATED BY YOUR TAX, FINANCIAL, AND LEGAL COUNSEL. YOU AND YOUR COUNSEL SHOULD CONDUCT A CAREFUL INDEPENDENT INVESTIGATION OF THE PROPERTY TO DETERMINE THAT IT IS SUITABLE TO YOUR NEEDS.

FOR MORE INFORMATION:

Carlos Garcia
carlos@sunvista.com
505 670 3181

Joel Cumplido
joel@sunvista.com
505 670 3328

FOR LEASE

2945 Rodeo Park Dr. E. | Santa Fe, NM 87505

SWQ I-25 & Rodeo Rd.

Professional Office Space

GENEROUSLY-SIZED
OFFICE SUITES



NA SunVista 505 988 8081 sunvista.com

THE INFORMATION CONTAINED IS BELIEVED RELIABLE. WHILE WE DO NOT DOUBT THE ACCURACY, WE HAVE NOT VERIFIED IT AND MAKE NO GUARANTEE, WARRANTY OR REPRESENTATION ABOUT IT. IT IS YOUR RESPONSIBILITY TO INDEPENDENTLY CONFIRM ITS ACCURACY AND COMPLETENESS. ANY PROJECTION, OPINION, ASSUMPTION OR ESTIMATED USES ARE FOR EXAMPLE ONLY AND DO NOT REPRESENT THE CURRENT OR FUTURE PERFORMANCE OF THE PROPERTY. THE VALUE OF THIS TRANSACTION TO YOU DEPENDS ON MANY FACTORS WHICH SHOULD BE EVALUATED BY YOUR TAX, FINANCIAL, AND LEGAL COUNSEL. YOU AND YOUR COUNSEL SHOULD CONDUCT A CAREFUL INDEPENDENT INVESTIGATION OF THE PROPERTY TO DETERMINE THAT IT IS SUITABLE TO YOUR NEEDS.

FOR MORE INFORMATION:

Carlos Garcia
carlos@sunvista.com
505 670 3181

Joel Cumplido
joel@sunvista.com
505 670 3328

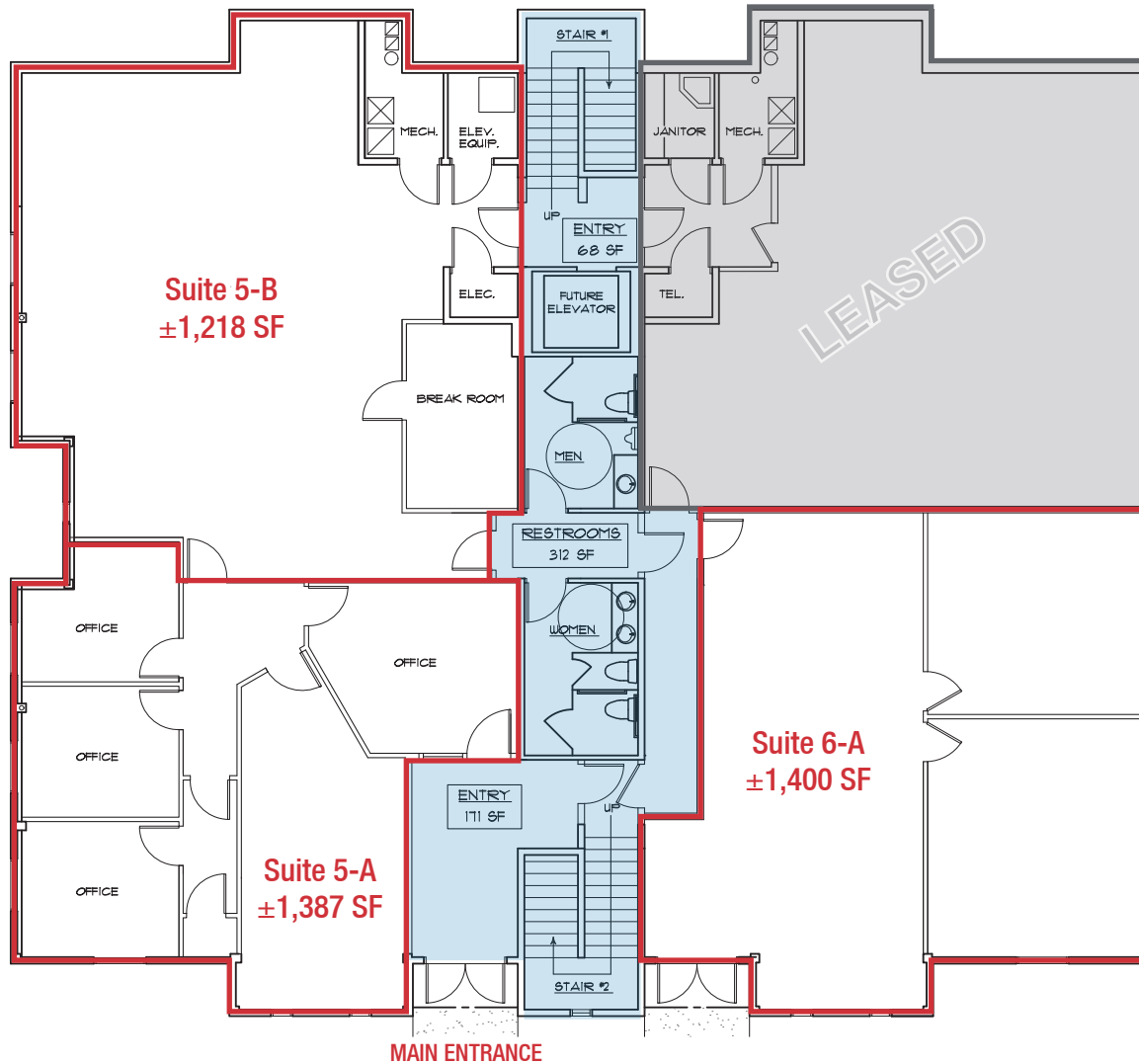
FOR LEASE

2945 Rodeo Park Dr. E. | Santa Fe, NM 87505

SWQ I-25 & Rodeo Rd.

Professional Office Space

GENEROUSLY-SIZED
OFFICE SUITES



FIRST LEVEL

Suite 5-A: ±1,387 SF

Suite 5-B: ±1,218 SF

Suite 6-A: ±1,400 SF

- Available
- Leased
- Common Area

NA SunVista 505 988 8081 sunvista.com

THE INFORMATION CONTAINED IS BELIEVED RELIABLE. WHILE WE DO NOT DOUBT THE ACCURACY, WE HAVE NOT VERIFIED IT AND MAKE NO GUARANTEE, WARRANTY OR REPRESENTATION ABOUT IT. IT IS YOUR RESPONSIBILITY TO INDEPENDENTLY CONFIRM ITS ACCURACY AND COMPLETENESS. ANY PROJECTION, OPINION, ASSUMPTION OR ESTIMATED USES ARE FOR EXAMPLE ONLY AND DO NOT REPRESENT THE CURRENT OR FUTURE PERFORMANCE OF THE PROPERTY. THE VALUE OF THIS TRANSACTION TO YOU DEPENDS ON MANY FACTORS WHICH SHOULD BE EVALUATED BY YOUR TAX, FINANCIAL, AND LEGAL COUNSEL. YOU AND YOUR COUNSEL SHOULD CONDUCT A CAREFUL INDEPENDENT INVESTIGATION OF THE PROPERTY TO DETERMINE THAT IT IS SUITABLE TO YOUR NEEDS.

FOR MORE INFORMATION:

Carlos Garcia
carlos@sunvista.com
505 670 3181

Joel Cumplido
joel@sunvista.com
505 670 3328

FOR LEASE

2945 Rodeo Park Dr. E. | Santa Fe, NM 87505

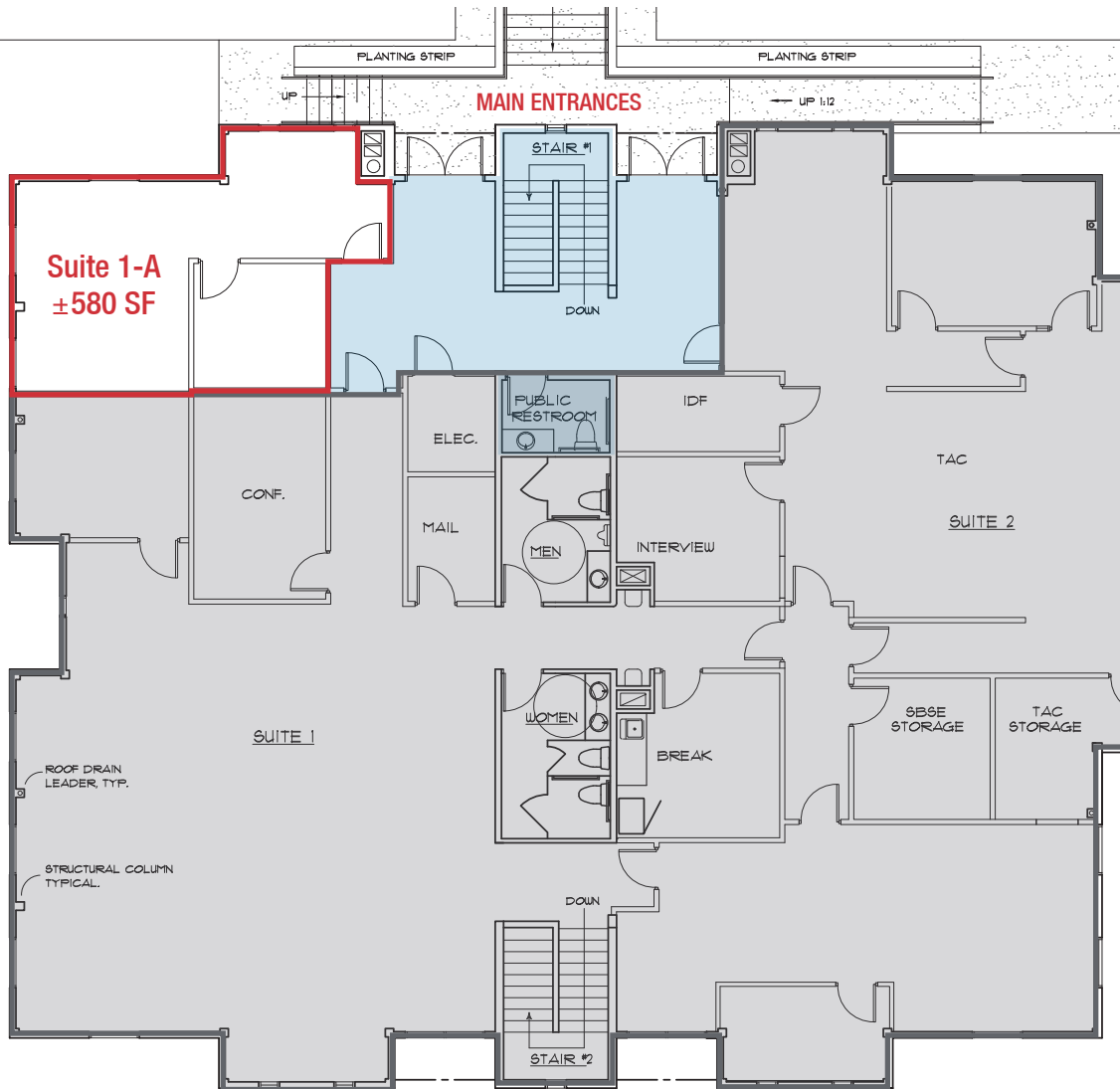
SWQ I-25 & Rodeo Rd.

Professional Office Space

GENEROUSLY-SIZED
OFFICE SUITES

SECOND LEVEL

Suite 1-A: ±580 SF



- Available
- Leased
- Common Area

NA SunVista 505 988 8081 sunvista.com

THE INFORMATION CONTAINED IS BELIEVED RELIABLE. WHILE WE DO NOT DOUBT THE ACCURACY, WE HAVE NOT VERIFIED IT AND MAKE NO GUARANTEE, WARRANTY OR REPRESENTATION ABOUT IT. IT IS YOUR RESPONSIBILITY TO INDEPENDENTLY CONFIRM ITS ACCURACY AND COMPLETENESS. ANY PROJECTION, OPINION, ASSUMPTION OR ESTIMATED USES ARE FOR EXAMPLE ONLY AND DO NOT REPRESENT THE CURRENT OR FUTURE PERFORMANCE OF THE PROPERTY. THE VALUE OF THIS TRANSACTION TO YOU DEPENDS ON MANY FACTORS WHICH SHOULD BE EVALUATED BY YOUR TAX, FINANCIAL, AND LEGAL COUNSEL. YOU AND YOUR COUNSEL SHOULD CONDUCT A CAREFUL INDEPENDENT INVESTIGATION OF THE PROPERTY TO DETERMINE THAT IT IS SUITABLE TO YOUR NEEDS.

FOR MORE INFORMATION:

Carlos Garcia
carlos@sunvista.com
505 670 3181

Joel Cumplido
joel@sunvista.com
505 670 3328

Santa Fe | The City Different and the State Capital

The oldest capital city in the United States and the oldest city in New Mexico, **Santa Fe** is well-known as a center for arts that reflects the multicultural character of the city. Tourism is a major element of the Santa Fe economy, with visitors attracted year-round by the climate and related outdoor activities (such as skiing in years of adequate snowfall; hiking in other seasons) plus cultural activities of the city and the region. Most tourist activity takes place in the historic downtown, especially on and around the Plaza, a one-block square adjacent to the Palace of the Governors, the original seat of New Mexico's territorial government since the time of Spanish colonization. Other areas include Canyon Road and "Museum Hill", the site of the major art museums of the city as well as the Santa Fe International Folk Art Market, which takes place each year during the second full weekend of July.

Santa Fe by the numbers (ESRI 2020 Demographics)



FOUNDED IN 1608, SANTA FE IS THE OLDEST STATE CAPITAL IN THE UNITED STATES

SANTA FE ART REPORT CARD

A half-mile stretch of Santa Fe's Canyon Road has **more than 100 galleries**, boutiques and restaurants "making it the world's densest concentration of art galleries," according to the *Four Seasons website*

Santa Fe is the third-largest art market in the United States, after New York and Los Angeles.

Santa Fe Accolades

One of 2 cities recognized worldwide for the Best Food/Beverage Destination Experience by World Food Travel Association 2018
#3 Best Small City in U.S. to Live Apartment Therapy 2018
Top Destination for Millennial Travelers HomeToGo 2019
#2 Top 10 Small Cities in the US by Conde Nast Traveler 2019
One of the Best Cities for Outdoor Lovers MarketWatch 2019
One of the Greenest Cities in the U.S. CubeSmart Self Storage 2019
Top Ten Best Places to Get a Fresh Start Livability 2019
#3 Top Cities for Women Entrepreneurs Pennygeeks 2019
Best Most Romantic Destination in the U.S. CBS Local 2019
Best Up & Coming Housing Market in NM from Insurify 2019



19 minutes:
average commute



SKI SANTA FE
averages
225 inches of snow
a year.

