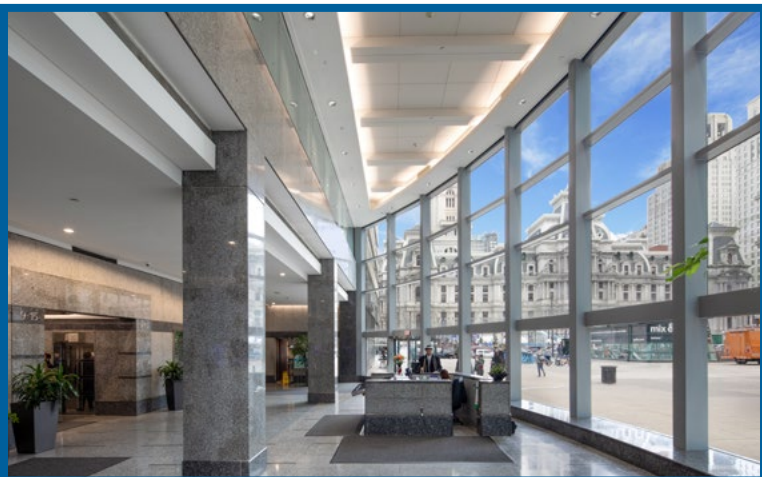




### Property Highlights

- 7,862 SF (Divisible)
- Asking \$25 PSF
- Move in Ready
- Multiple private offices
- Large open work area with up to 50 work stations
- High Quality Office Furniture Available
- 3 sides of glass with views of center city
- Direct access to suburban station concourse



Contact:

**Louis Tonon**  
Associate  
ltonon@geisrealty.com  
(215) 568-1590

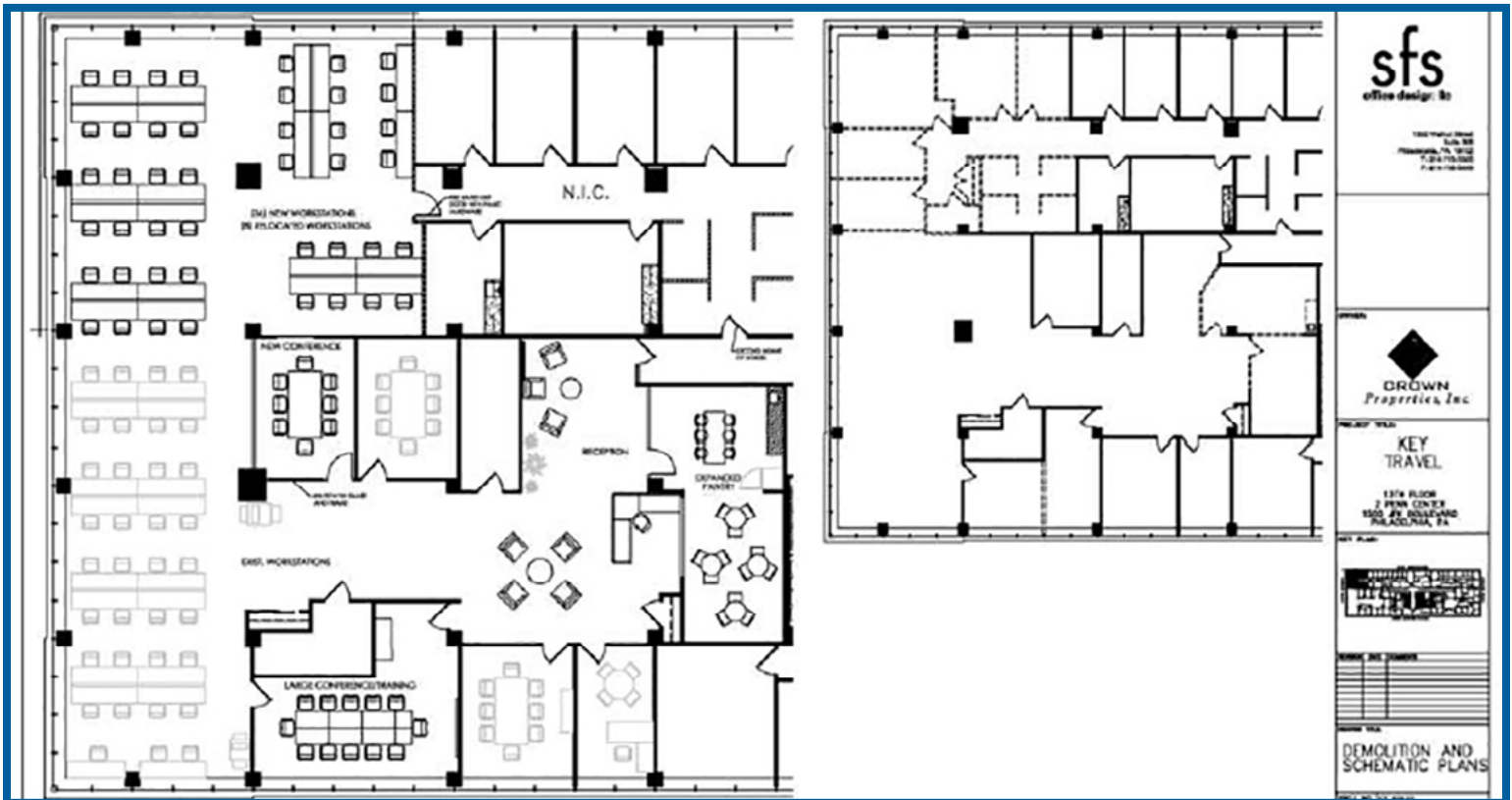
30 South 17th Street  
Suite 210  
Philadelphia, PA 19103  
(215) 568-7222

[www.geisrealty.com](http://www.geisrealty.com)

# 1500 JFK Boulevard, 2 Penn Center

Philadelphia, PA 19102

## Floor Plan



Contact:

**Louis Tonon**  
Associate  
ltonon@geisrealty.com  
(215) 568-1590

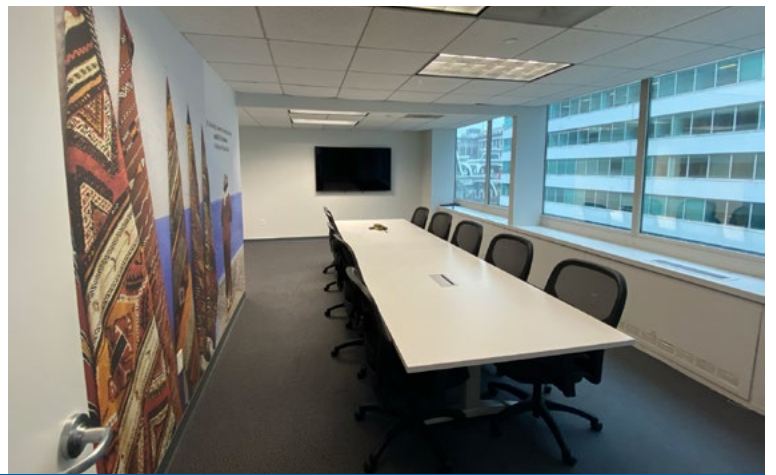
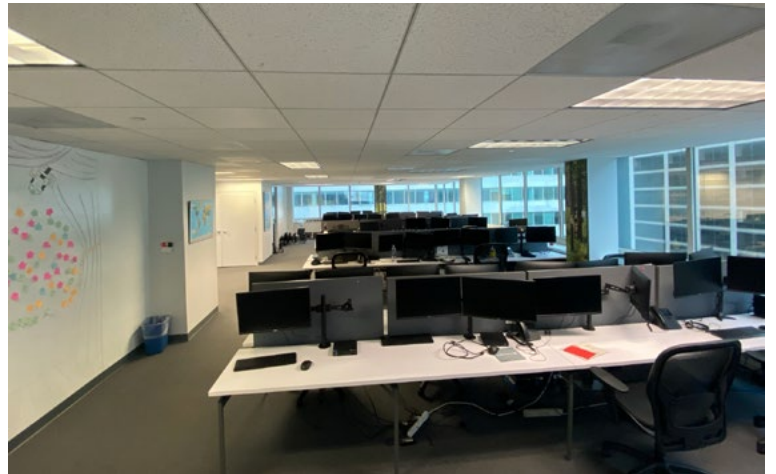
30 South 17th Street  
Suite 210  
Philadelphia, PA 19103  
(215) 568-7222

[www.geisrealty.com](http://www.geisrealty.com)

# 1500 JFK Boulevard, 2 Penn Center

Philadelphia, PA 19102

## Interior Photos



Contact:

**Louis Tonon**  
Associate  
ltonon@geisrealty.com  
(215) 568-1590

30 South 17th Street  
Suite 210  
Philadelphia, PA 19103  
(215) 568-7222

[www.geisrealty.com](http://www.geisrealty.com)