

Office Space for Lease on Rt. 1

861 Lafayette Rd, Hampton, NH 03842



Listing ID: 30728928
 Status: Active
 Property Type: Office For Lease
 Office Type: Office Building
 Contiguous Space: 1,410 SF
 Total Available: 1,410 SF
 Lease Rate: \$15 PSF (Annual)
 Base Monthly Rent: \$1,762
 Lease Type: Modified Gross



Overview/Comments

Available for lease is 1,410± SF of quality office space on the upper floor of a two-story office condominium. Located on Route 1 in Hampton, this building has ample on-site parking and is easily accessible by all major routes. Can be accessed from the front or back stairway and has its own separate access corridor. Ample parking and signage.

Price includes heat; tenant pays all other utilities.

More Information Online

<https://nainorwoodgroup.catalyst.com//listing/30728928>



QR Code

Scan this image with your mobile device:

General Information

Tax ID/APN:	071-015-005	Zoning:	BUSINESS
Office Type:	Office Building, Other	Class of Space:	Class B

Available Space

Suite/Unit Number:	5	Date Available:	05/05/2021
Suite Floor/Level:	2	Lease Rate:	\$15 PSF (Annual)
Space Available:	1,410 SF	Lease Type:	Modified Gross
Minimum Divisible:	1,410 SF	Parking Spaces:	0
Maximum Contiguous:	1,410 SF	Real Estate Taxes:	\$1 PSF (Annual)
Space Type:	Relet		

Area & Location

Property Visibility: Excellent
 Highway Access: I-95 in NH, Exit 2 to Rt 27 East, left at lights down town Hampton, .9 miles on right.

Building Related

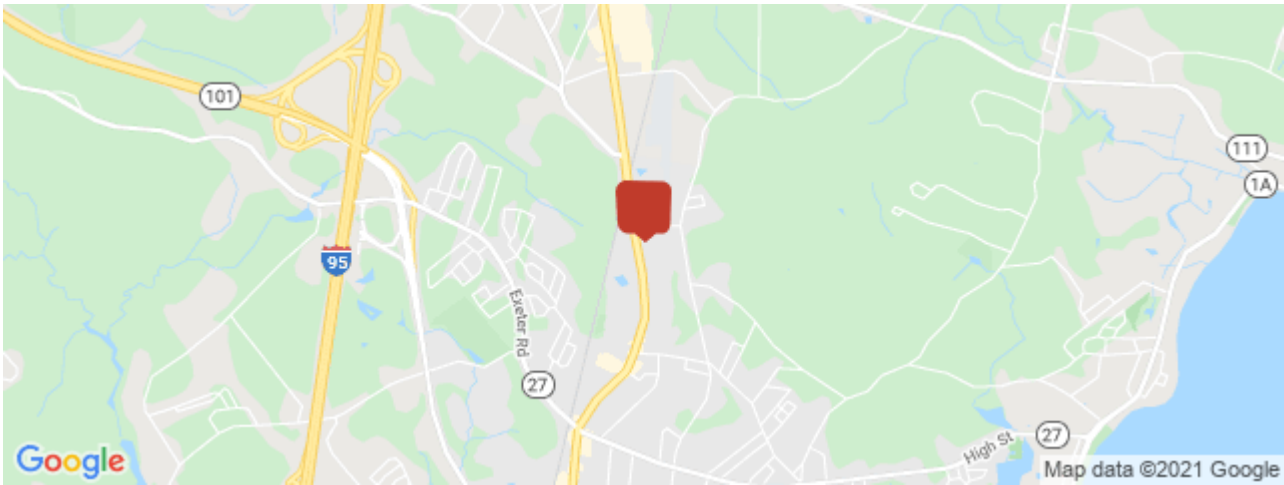
Year Built:	1985	Freight Elevators:	0
Roof Type:	Arched	Heat Type:	Natural Gas
Construction/Siding:	Wood Frame, Wood Siding	Heat Source:	Central
Parking Type:	Surface	Air Conditioning:	Engineered System
Parking Description:	Ample on-site parking	Internet Access:	Cable
Passenger Elevators:	0		

Land Related

Water Service: Municipal
Sewer Type: Municipal

Location

Address: 861 Lafayette Rd, Hampton, NH 03842
County: Rockingham
MSA: Boston-Cambridge-Newton



Property Images



IMG_7



IMG_4403



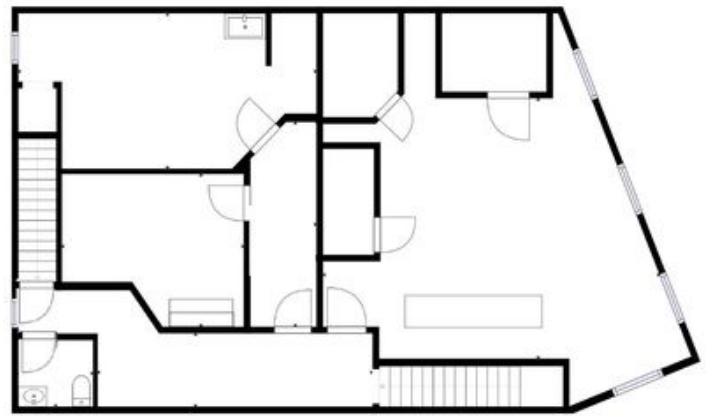
IMG_4402



IMG_4412



IMG_4418



Floor Plan Second Floor

Property Contacts



Deana Arden

NAI Norwood Group
603-682-3440 [M]
603-431-3001 [O]
darden@nainorwoodgroup.com