

ROSEWAY NEIGHBORHOOD OFFICE/RETAIL PROPERTY FOR LEASE

7337 NE Fremont St

PORTLAND, OR 97213



Charming neighborhood corner office/retail opportunity with off-street parking

CONTACT

Matt Bassist 503 972 7193 / mbassist@naielliott.com  
Riley Henderson 503 972 7191 / rhenderson@naielliott.com







951 SF corner office or retail space with excellent visibility available now

Highly visible office/retail space in the Roseway neighborhood. The space is currently built-out for office use with private offices. Retail uses also allowed.

- High visibility corner location
- Current buildout has a reception desk and waiting room, 5 private offices and 2 restrooms
- Good for service office, light medical or retail
- Off-street parking available
- Located one block off of NE Sandy Blvd
- CM2 Zoning
- Strong local and responsive ownership



The Roseway neighborhood is a family oriented area with many thriving businesses and local restaurants.



#### Nearby Amenities

- Annie's Donut's
- Pizzeria Otto
- Kainos Coffee
- Thien Hong
- Pho MeKha

#### Roseway Neighborhood Highlights

- 79% of Roseway residents are homeowners
- Family oriented neighborhood
- Many young professionals and families
- Close-in location with dense suburban feel
- Good access to NE Sandy, Interstate 84, Interstate 205.



98  
BIKE SCORE



87  
WALK SCORE



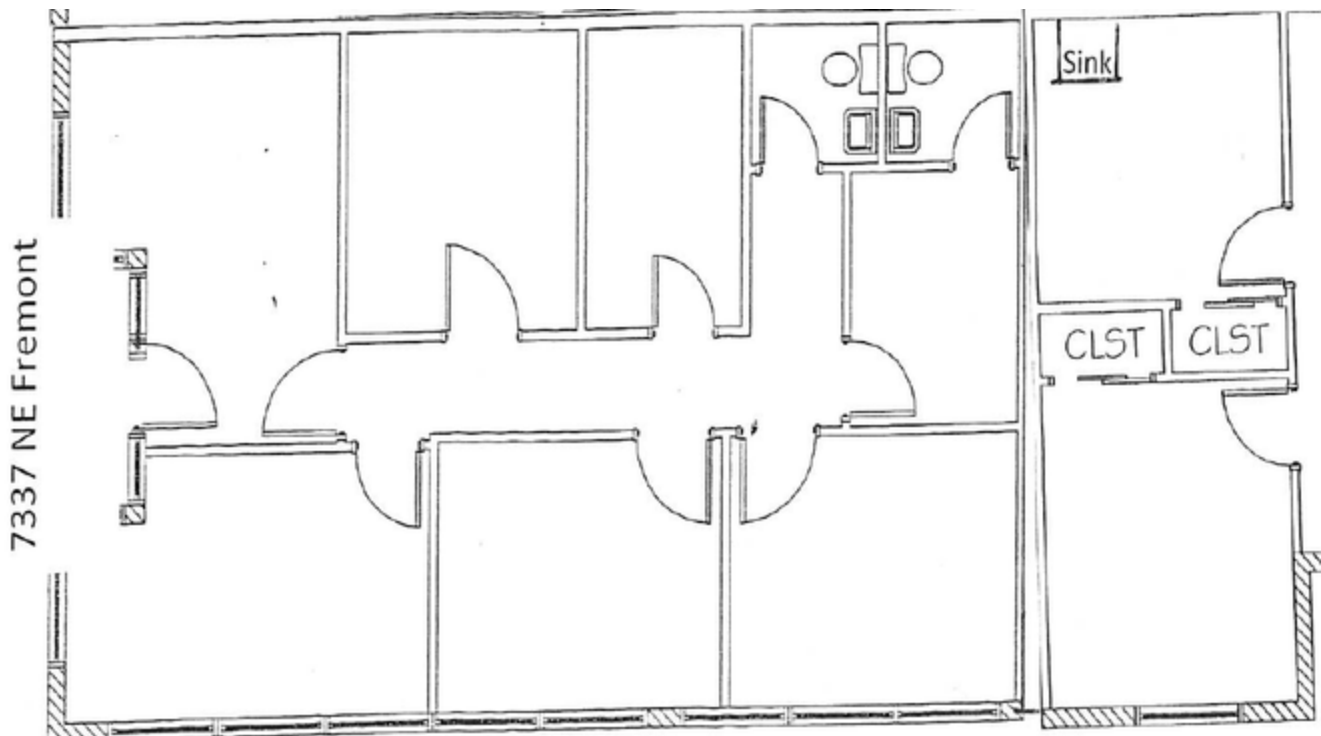
47  
TRANSIT SCORE

#### CONTACT

**Matt Bassist** 503 972 7193 / [mbassist@naielliott.com](mailto:mbassist@naielliott.com)  
**Riley Henderson** 503 972 7191 / [rhenderson@naielliott.com](mailto:rhenderson@naielliott.com)

**NAI Elliott**

# Available Spaces



## LEASE INFORMATION

Lease Type:	NNN	Lease Term:	Negotiable
Total Space:	951 SF	Lease Rate:	Negotiable

## AVAILABLE SPACES

SUITE	TENANT	SIZE (SF)	LEASE TYPE	LEASE RATE	DESCRIPTION
7337 NE Fremont St	Available	951 SF	NNN	Negotiable	Current building has 5 private offices, reception area, and two restrooms.

## CONTACT

**Matt Bassist** 503 972 7193 / [mbassist@naielliott.com](mailto:mbassist@naielliott.com)  
**Riley Henderson** 503 972 7191 / [rhenderson@naielliott.com](mailto:rhenderson@naielliott.com)





# Location Map



## CONTACT

**Matt Bassist** 503 972 7193 / [mbassist@naielliott.com](mailto:mbassist@naielliott.com)  
**Riley Henderson** 503 972 7191 / [rhenderson@naielliott.com](mailto:rhenderson@naielliott.com)

