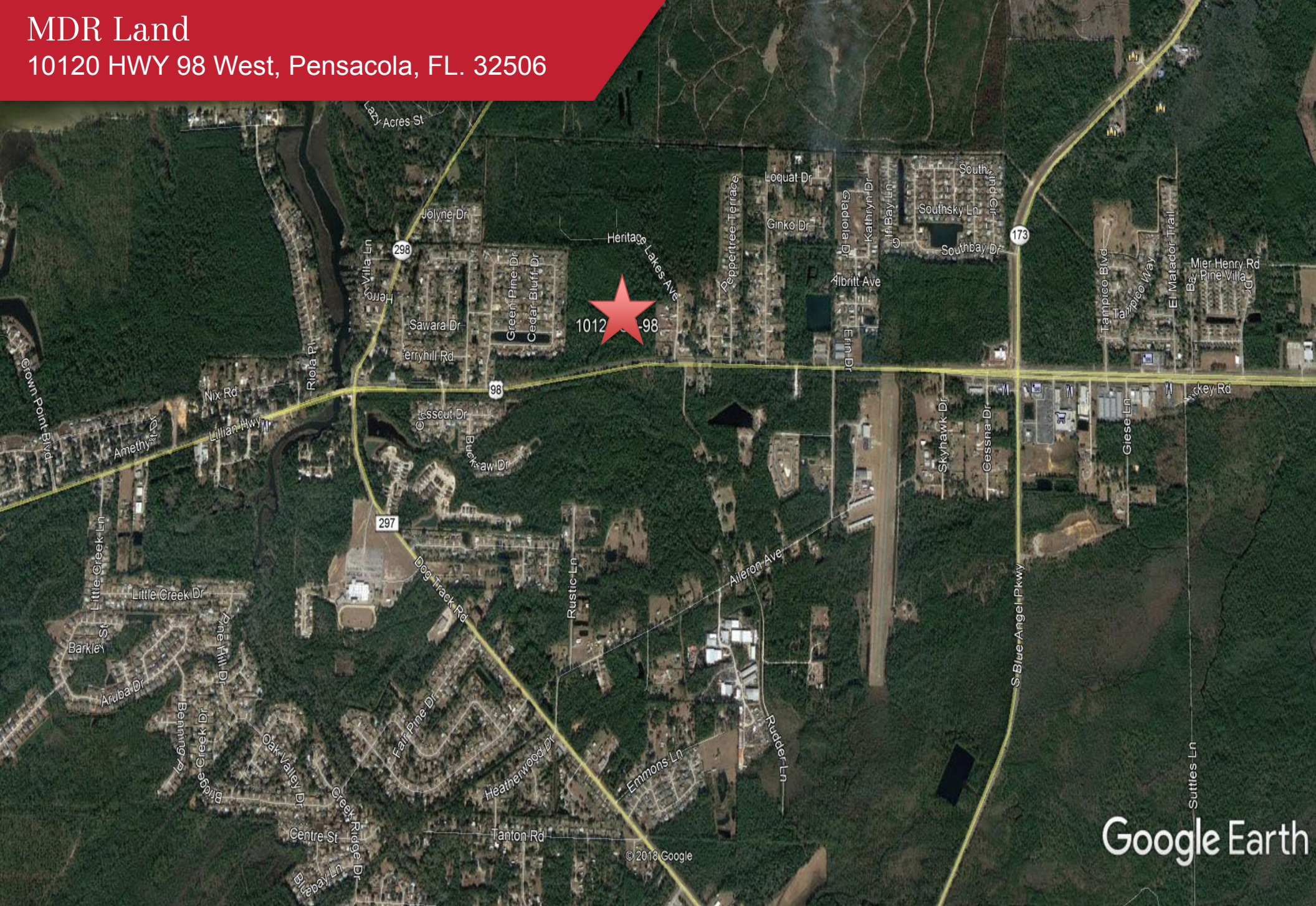


# MDR Land

10120 HWY 98 West, Pensacola, FL. 32506

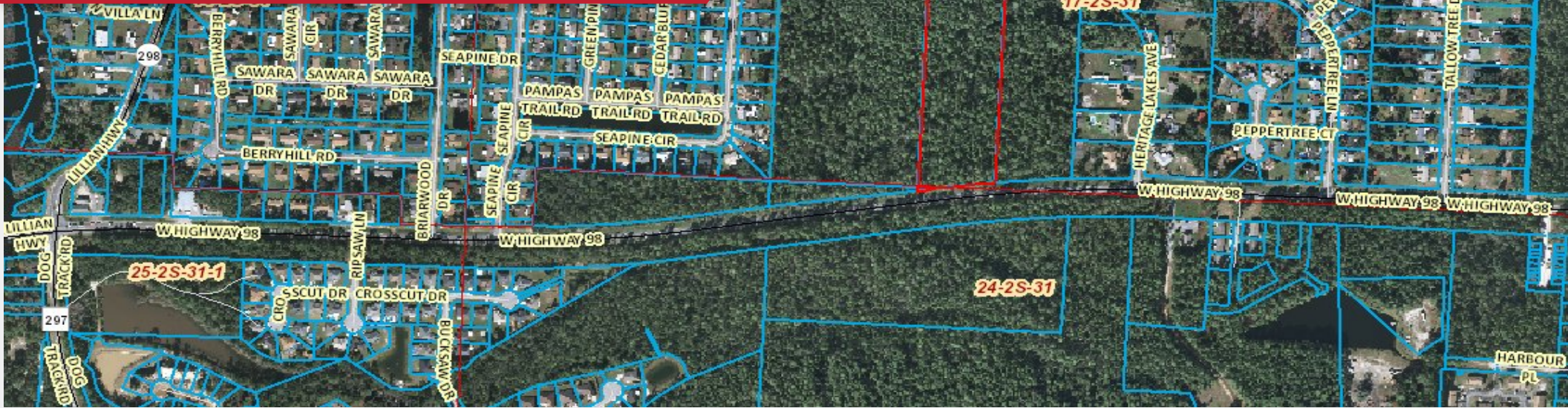


Google Earth

NO WARRANTY OR REPRESENTATION, EXPRESS OR IMPLIED, IS MADE AS TO THE ACCURACY OF THE INFORMATION CONTAINED HEREIN, AND THE SAME IS SUBMITTED SUBJECT TO ERRORS, OMISSIONS, CHANGE OF PRICE, RENTAL OR OTHER CONDITIONS, PRIOR SALE, LEASE OR FINANCING, OR WITHDRAWAL WITHOUT NOTICE, AND OF ANY SPECIAL LISTING CONDITIONS IMPOSED BY OUR PRINCIPALS NO WARRANTIES OR REPRESENTATIONS ARE MADE AS TO THE CONDITION OF THE PROPERTY OR ANY HAZARDS CONTAINED THEREIN ARE ANY TO BE IMPLIED.

24 West Chase Street Suite 100  
Pensacola, FL 32502  
+1 850 433 0577  
[naipensacola.com](http://naipensacola.com)





## Property Description

- 10.32 AC +/-
- 350 FT Frontage
- Dimensions 350 x 1284 ' +/-
- Zoned MDR
- PID 172S314201002001 & 242S312101001001
- 0.36 \$PSF
- Seller will retain all sub-surface rights, including without limitation, all water, energy and mineral rights pertaining to the property. Property is being sold “as is” “where is” , with the right of inspection.

## Land Description

- Vacant Land on HWY 98 W. located between Blue Angel Pkwy and Lillian Bridge. Heavily wooded, mostly wetlands but has a possible uplands homesite on HWY 98 W.

For Sale

\$160,000