

FLEX/LIGHT INDUSTRIAL PROPERTY FOR LEASE

Riverwood Business Center

9325 - 9425 SW COMMERCE CIRCLE, WILSONVILLE, OR 97070



Great north Wilsonville flex spaces
2,000 sf - 4,200 sf — Available 7/1/2021

CONTACT

Christopher Lio 503 972 7227 / clio@naielliott.com
Jamie Nelson 503 972 7202 / jnelson@naielliott.com



Great access to I-5



CONTACT

Christopher Lio 503 972 7227 / clio@naielliott.com
Jamie Nelson 503 972 7202 / jnelson@naielliott.com



Property Details & Highlights

Building Name	Riverwood Business Center
Property Type	Industrial
Property Subtype	Flex Space
APN	R1164894
Building Size	50,400 SF
Lot Size	4.24 Acres
Building Class	B
Year Built	1980
Free Standing	No

- Easy access north Wilsonville location
- 1 minute to I-5
- Close to new Wilsonville – Sherwood Bypass
- Ample parking
- Ample power
- Responsive local ownership & management

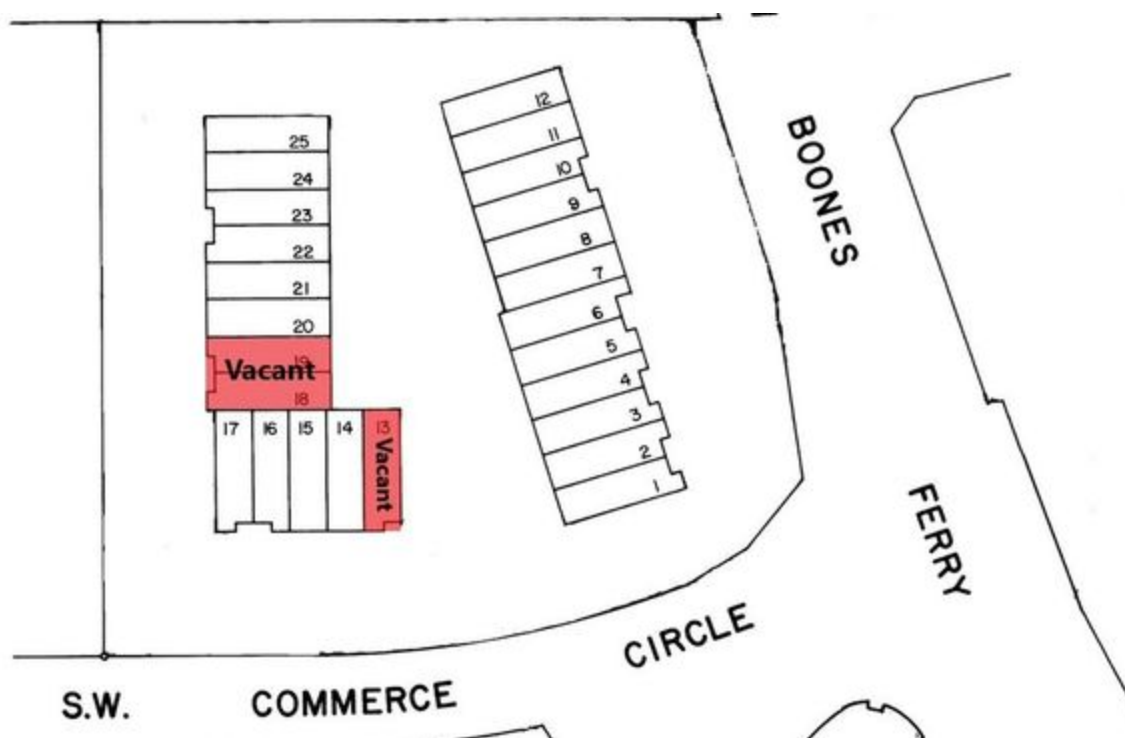


CONTACT

Christopher Lio 503 972 7227 / clio@naielliott.com
Jamie Nelson 503 972 7202 / jnelson@naielliott.com



Lease Spaces Available



LEASE INFORMATION

Lease Type:	NNN	Lease Term:	Negotiable
Total Space:	2,100 - 4,200 SF	Lease Rate:	\$12.00 SF/yr

AVAILABLE SPACES

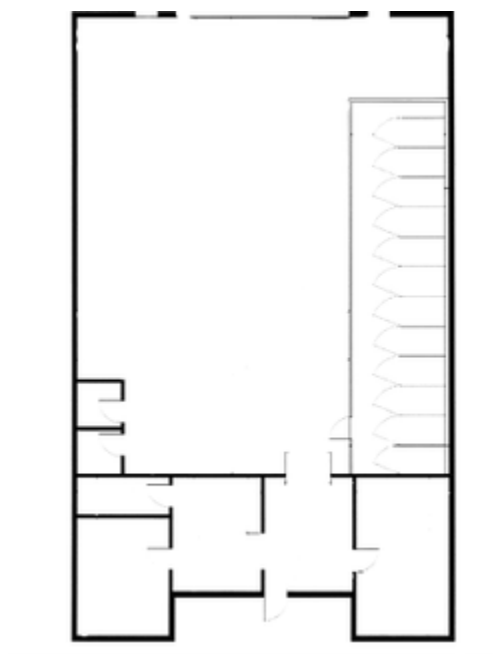
SUITE	TENANT	SIZE (SF)	LEASE TYPE	LEASE RATE	DESCRIPTION
Building B #18-19	Available	4,200 SF	NNN	\$12.00 SF/yr	-
Building B #13	Available	2,100 SF	NNN	\$12.00 SF/yr	-

CONTACT

Christopher Lio 503 972 7227 / clio@naielliott.com
Jamie Nelson 503 972 7202 / jnelson@naielliott.com

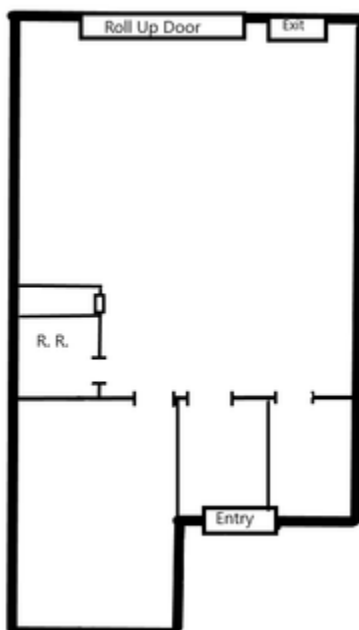


Floor Plans



(Not to Scale)

SUITE B 18 - 19 || 4,200sf || Appx. 1,000sf of office || 2 Grade-level doors



(Not to Scale)

SUITE B 13 || 2,100sf || Appx. 500sf of office || 1 Grade-level door

CONTACT

Christopher Lio 503 972 7227 / clio@naielliott.com
Jamie Nelson 503 972 7202 / jnelson@naielliott.com

NAI Elliott

Aerial Site Plan



CONTACT

Christopher Lio 503 972 7227 / clio@naielliott.com
Jamie Nelson 503 972 7202 / jnelson@naielliott.com



Additional Photos

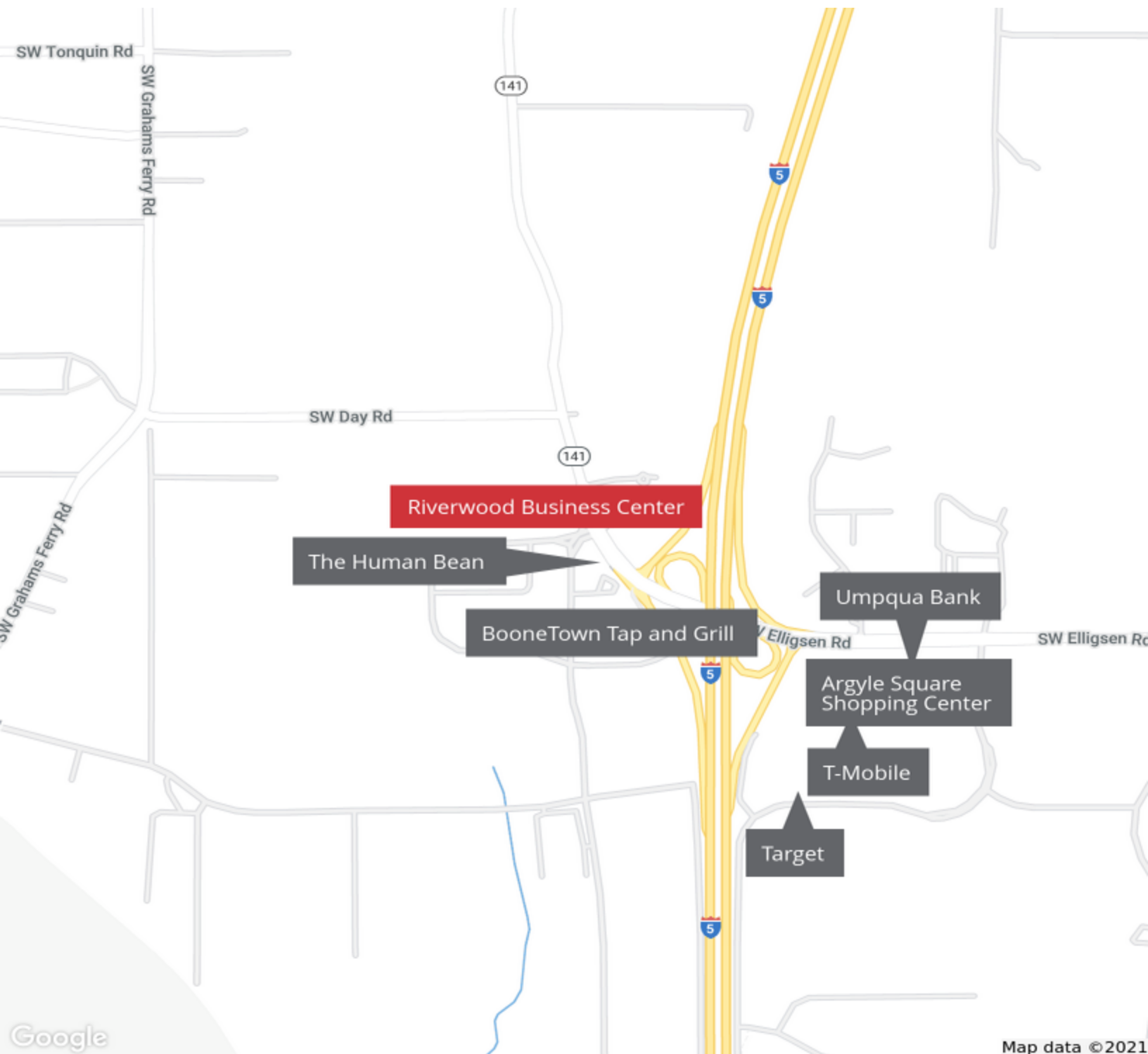


CONTACT

Christopher Lio 503 972 7227 / clio@naielliott.com
Jamie Nelson 503 972 7202 / jnelson@naielliott.com



Location Map



CONTACT

Christopher Lio 503 972 7227 / clio@naielliott.com
Jamie Nelson 503 972 7202 / jnelson@naielliott.com



Aerial Map



CONTACT

Christopher Lio 503 972 7227 / clio@naielliott.com
Jamie Nelson 503 972 7202 / jnelson@naielliott.com

