

Adbel Plaza



Medical Office Space in Matthews For Lease

1401 Matthews Township Pkwy
Matthews, NC 28105

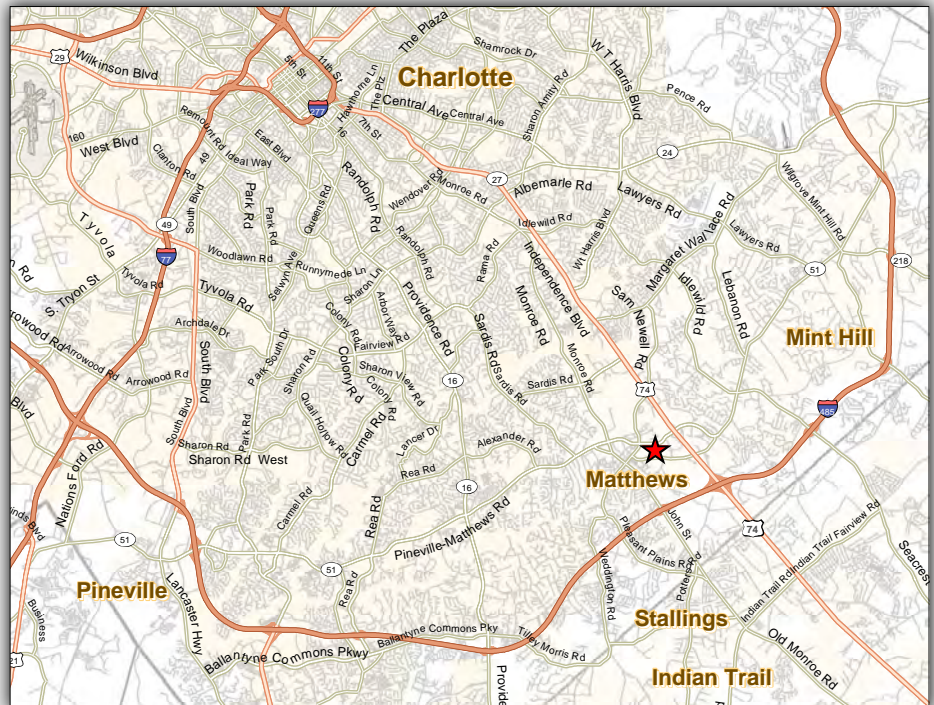
4,111 RSF

\$28.50 PSF, Full Service

Mike Wiles
mwiles@srenc.com

Caldwell Rose
crose@srenc.com

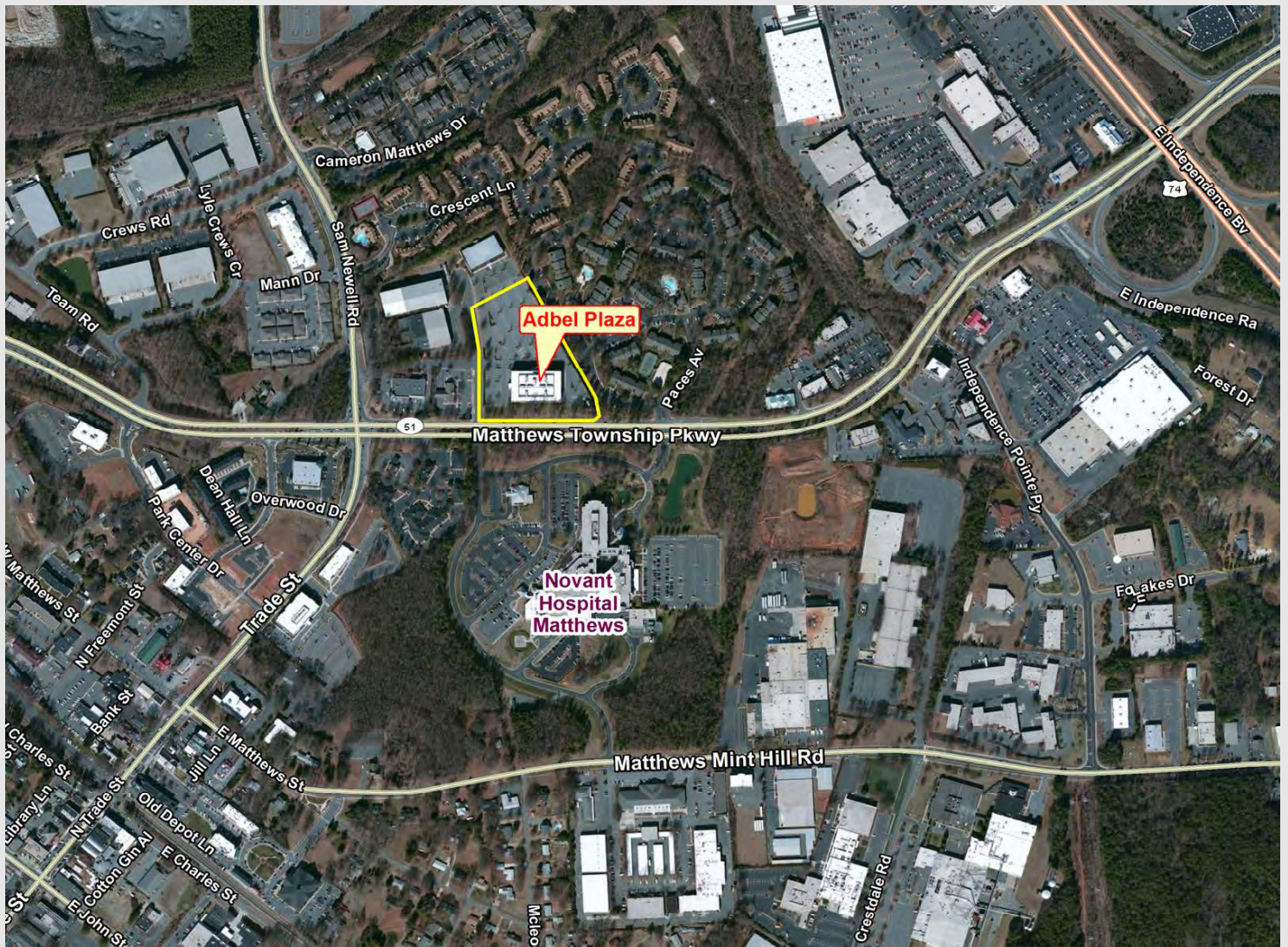
NAI Southern Real Estate
4201 Congress Street, Suite 170
Charlotte, NC 28209
704-375-1000
www.srenc.com



Property Details:

Located in one of Southeast Charlotte's fastest growing communities, directly across from Novant Health Matthews Medical Center. Convenient access from Hwy 51 (Matthews Township Parkway) and Hwy 74 (E. Independence Blvd). Approximately 2 miles from I-485.

- Three (3) Story, 90,000 SF Medical / Office Building
- Classic Brick Exterior
- New Common Areas



NAI Southern Real Estate-Charlotte, NC. We obtained the information above from sources we believe to be reliable. However, we have not verified its accuracy and make no guarantee, warranty, or representation about it. It is submitted subject to the possibility of errors, omissions, change of price, rental or other conditions, prior sale, lease, or financing, or withdrawal without notice. We include projections, opinions, assumptions or estimates for example only, and they may not represent current or future performance of the property. Compensation is offered to buyer/tenant agents only. Subagency and compensation are not offered to principals, their affiliates or subsidiaries.

73959

