



4518 Fulton Drive NW

Canton, Ohio 44708

SQ FT AVAILABLE

1st FLOOR	5,000 SF
-----------	----------

1st FLOOR	1,000 SF
-----------	----------

2nd FLOOR	2,554 SF
-----------	----------

LEASE RATE	\$13.00 SF/NNN
------------	----------------

LOT SIZE	4.62 Acres
----------	------------

BUILDING SIZE	40,554 SF
---------------	-----------

YEAR BUILT	1998
------------	------

ZONING	JAC-B3
--------	--------

TRAFFIC COUNT	12,900 (AADT)
---------------	---------------

Property Features

- Class "A" office space available.
- There are three separate spaces available in the building.
- The first floor has approximately 5,000 sq. ft. with an additional 1,000 that could be leased separately.
- The second floor has 2,554 sq. ft. available.
- Attractive, well maintained brick office building, with excellent visibility near Belden Village.
- Excellent location with easy ingress/egress and less than a mile from I-77.

Bill Rearick

330 966 8800
brearick@naispring.com

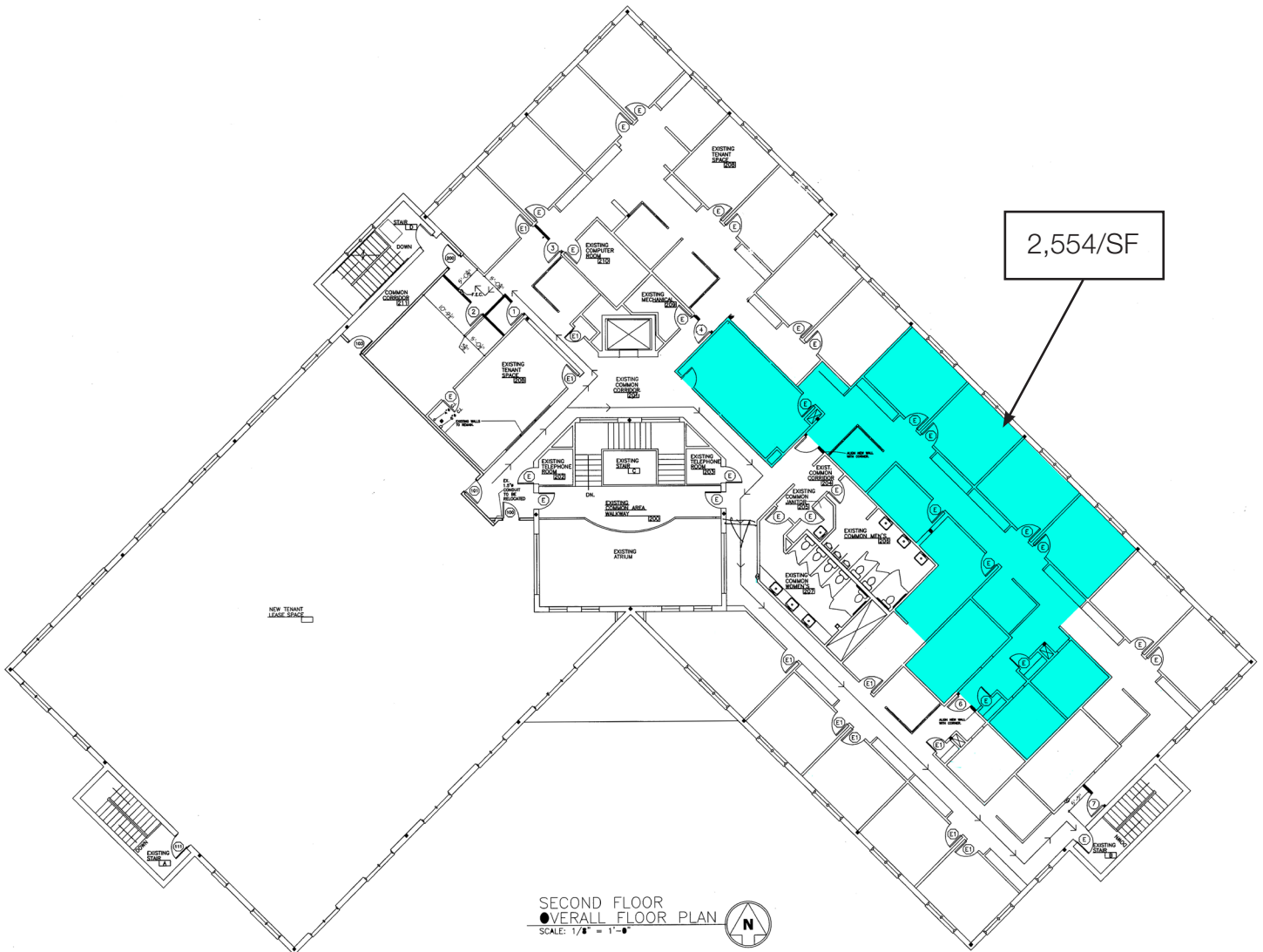
Dan Spring, SIOR

330 966 8800
dan@naispring.com

INFORMATION INCLUDED OR REFERRED TO HEREIN IS FURNISHED BY 3RD PARTIES & IS NOT GUARANTEED AS TO ITS ACCURACY OR COMPLETENESS. ALL INFORMATION INCLUDED OR REFERRED TO HEREIN IS CONFIDENTIAL & FURNISHED SOLELY FOR THE PURPOSE OF YOUR REVIEW IN CONNECTION WITH A POTENTIAL PURCHASE/LEASE OF THE SUBJECT PROPERTY(IES), AS APPLICABLE. INDEPENDENT ESTIMATES OF PROFORMA INCOME & EXPENSES SHOULD BE DEVELOPED BY YOU BEFORE ANY DECISION IS MADE ON WHETHER TO MAKE ANY PURCHASE.

8234 Pittsburg Ave NW
North Canton, Ohio 44720
+1 330 966 8800

naispring.com



*DIMENSIONS ARE APPROXIMATE. THIS INFORMATION IS FROM RELIABLE SOURCES BUT IS NOT GUARANTEED AND IS SUBJECT TO CHANGE

INFORMATION INCLUDED OR REFERRED TO HEREIN IS FURNISHED BY 3RD PARTIES & IS NOT GUARANTEED AS TO ITS ACCURACY OR COMPLETENESS. ALL INFORMATION INCLUDED OR REFERRED TO HEREIN IS CONFIDENTIAL & FURNISHED SOLELY FOR THE PURPOSE OF YOUR REVIEW IN CONNECTION WITH A POTENTIAL PURCHASE/LEASE OF THE SUBJECT PROPERTY(IES), AS APPLICABLE. INDEPENDENT ESTIMATES OF PROFORMA INCOME & EXPENSES SHOULD BE DEVELOPED BY YOU BEFORE ANY DECISION IS MADE ON WHETHER TO MAKE ANY PURCHASE.

8234 Pittsburg Ave NW
North Canton, Ohio 44720
+1 330 966 8800

naispring.com