



BEREWICK TOWN CENTER

STEELE CREEK ROAD, CHARLOTTE, NC 28273



DESCRIPTION

- Located in Southwest Charlotte at the intersection of Steele Creek Rd and Dixie River Road
- Anchored by a 53,000 SF Harris Teeter
- Berewick is a master planned development and included 1,600 single family homes, the Solis Berewick apartments, Hampton Inn & Suites, Walgreens, medical offices and additional service and retail
- Strategically located 5 minutes from Charlotte Douglas International Airport and adjacent to Charlotte Premium Outlets and I-485

BUILDING FEATURES

PROPERTY SIZE	110,000 SF
AVAILABLE	2,386 SF

TRAFFIC

SHOPTON RD WEST	17,000 VPD
STEELE CREEK RD	26,700 VPD

FOR MORE INFORMATION, PLEASE CONTACT:

KEELY HINES | 704.676.1563

Vice President/Broker

keely.hines@foundrycommercial.com

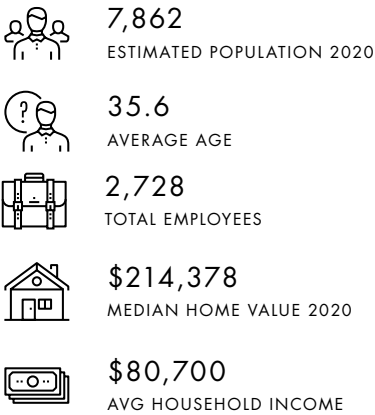
Licensed Real Estate Broker

Although the information contained herein was provided by sources believed to be reliable, Foundry Commercial makes no representation, expressed or implied, as to its accuracy and said information is subject to errors, omissions or changes.

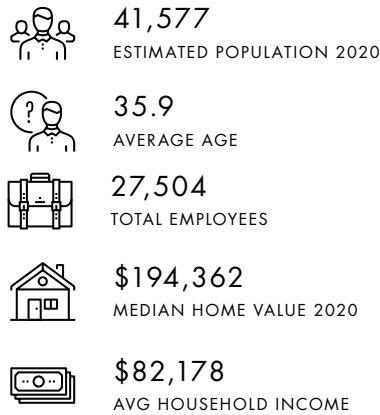


DEMOGRAPHICS

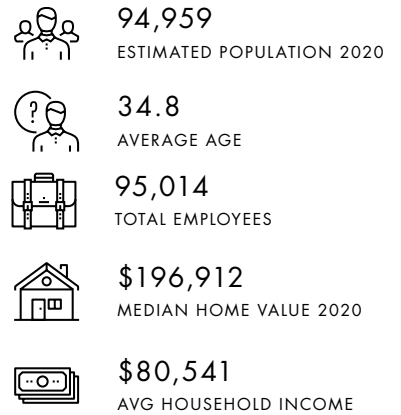
1 MILE RADIUS



3 MILE RADIUS

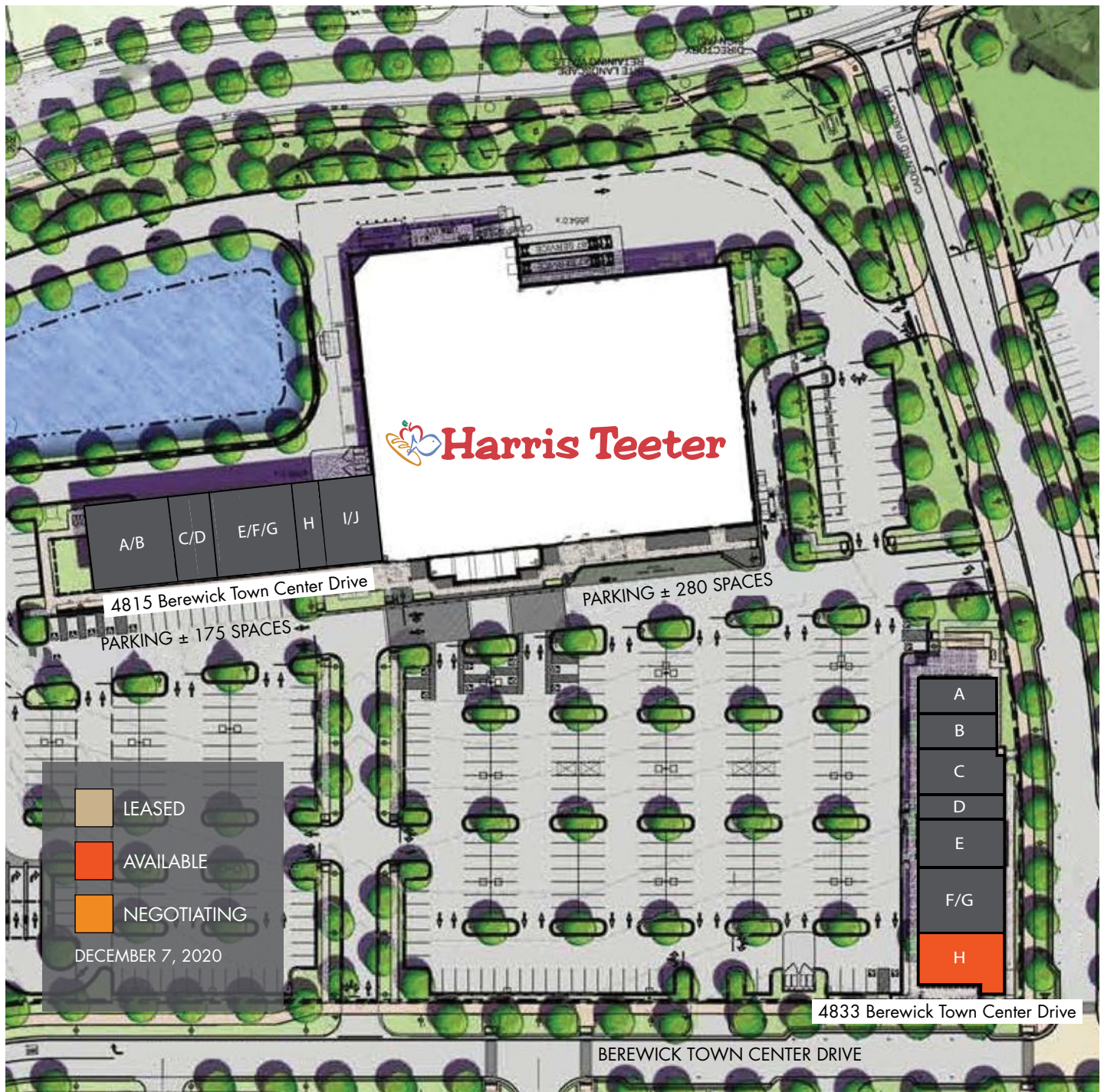


5 MILE RADIUS



±2,386 RSF AVAILABLE FOR LEASE

SITE PLAN



FOR MORE INFORMATION, PLEASE CONTACT:

KEELY HINES | 704.676.1563

Vice President/Broker

keely.hines@foundrycommercial.com

Licensed Real Estate Broker

Although the information contained herein was provided by sources believed to be reliable, Foundry Commercial makes no representation, expressed or implied, as to its accuracy and said information is subject to errors, omissions or changes.

4815 BEREWICK TOWN CENTER DRIVE

SUITE	TENANT	SF
A/B	ENRICO'S ITALIAN RESTAURANT	2,723
C/D	GO HEALTH	2,206
E/F/G	PET PEOPLE	3,574
H	LAPELS DRY CLEANERS	1,200
I/J	THE DENTAL COMPANY	2,302

4833 BEREWICK TOWN CENTER DRIVE

SUITE	TENANT	SF
A	ISLAND FIN POKE	1,317
B	CLEAN JUICE	1,243
C	JERSEY MIKE'S SUBS	1,686
D	GREAT CLIPS	1,055
E	THE UPS STORE	1,556
F/G	PASSION NAIL BAR	3,286
H	AVAILABLE	2,386

