

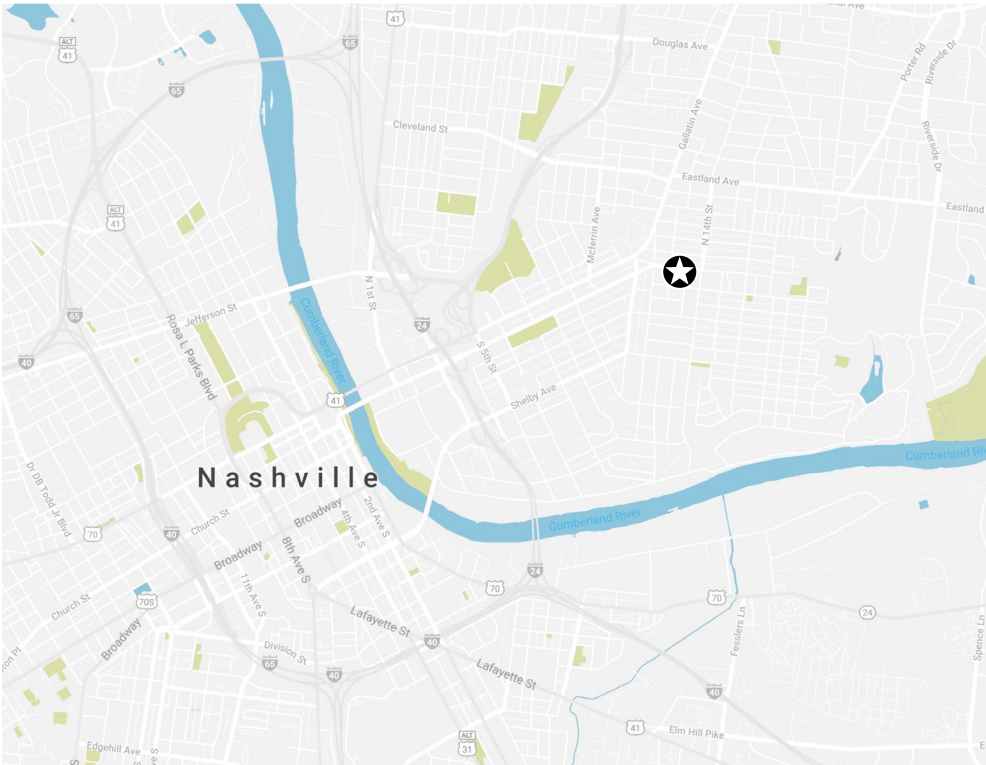


# 1106 WOODLAND

FOR LEASE | 2,895 SF | EAST NASHVILLE | CREATIVE OFFICE OR RETAIL

**FOUNDRY**  
COMMERCIAL

# PROPERTY OVERVIEW



## PROPERTY DETAILS

---

<b>Address</b>	1106 Woodland Street Nashville, Tennessee 37206
<b>Sub Market</b>	East Nashville, Five Points
<b>Size</b>	Suite D: 2,895 SF
<b>Availability</b>	Now available for tenant build-out
<b>Project Team</b>	Center 615   Design 615   Foundry Commercial
<b>Possible Uses</b>	Retail   Creative Office

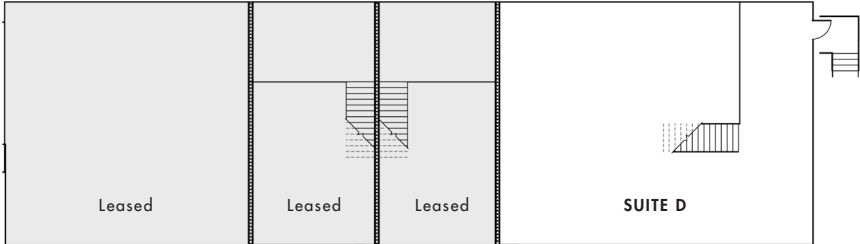
---

## PROPERTY HIGHLIGHTS

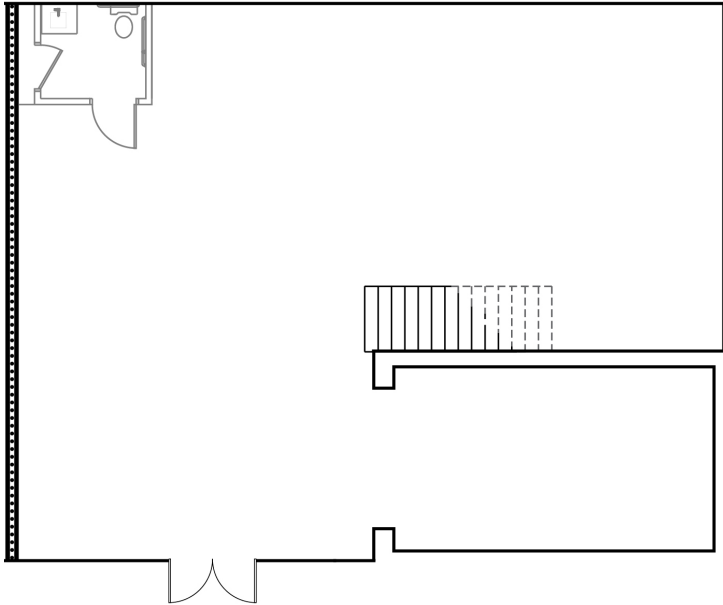
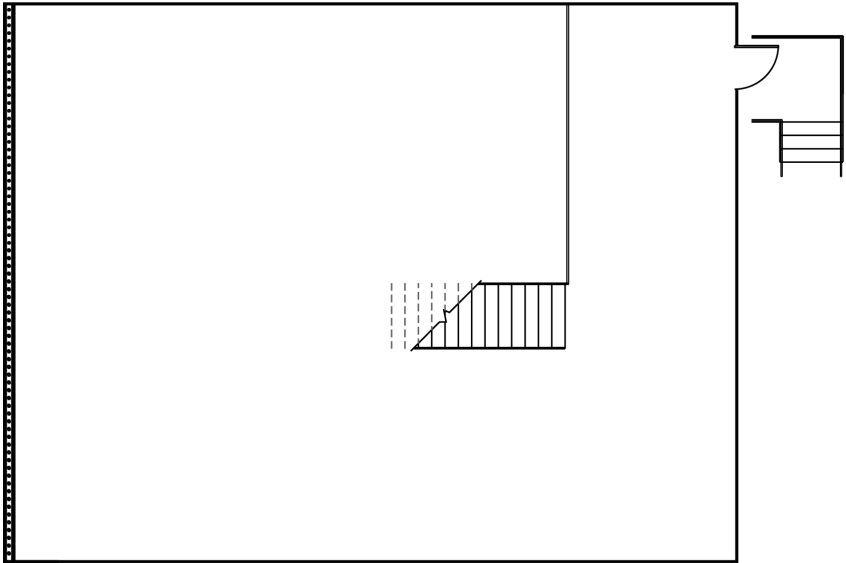
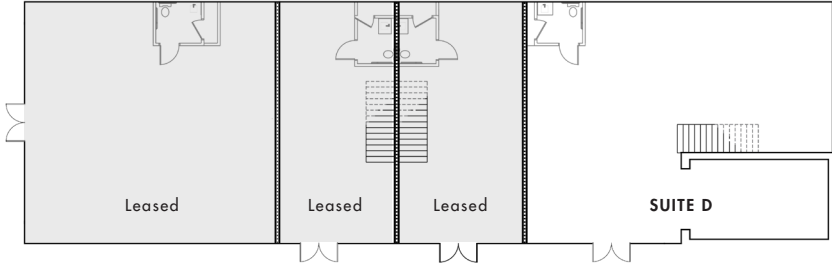
- Prime location at Five Points, the epicenter of East Nashville
- Less than half a mile to interstate access and Downtown Nashville
- Walkable immediate neighborhood - within one block of numerous restaurants, bars, coffee shops, and amenities
- Renovation and modern upgrades for the building almost complete
- Signage opportunity available
- Onsite and street parking available

# TENANT LAYOUT | SUITE D: 2,895 SF

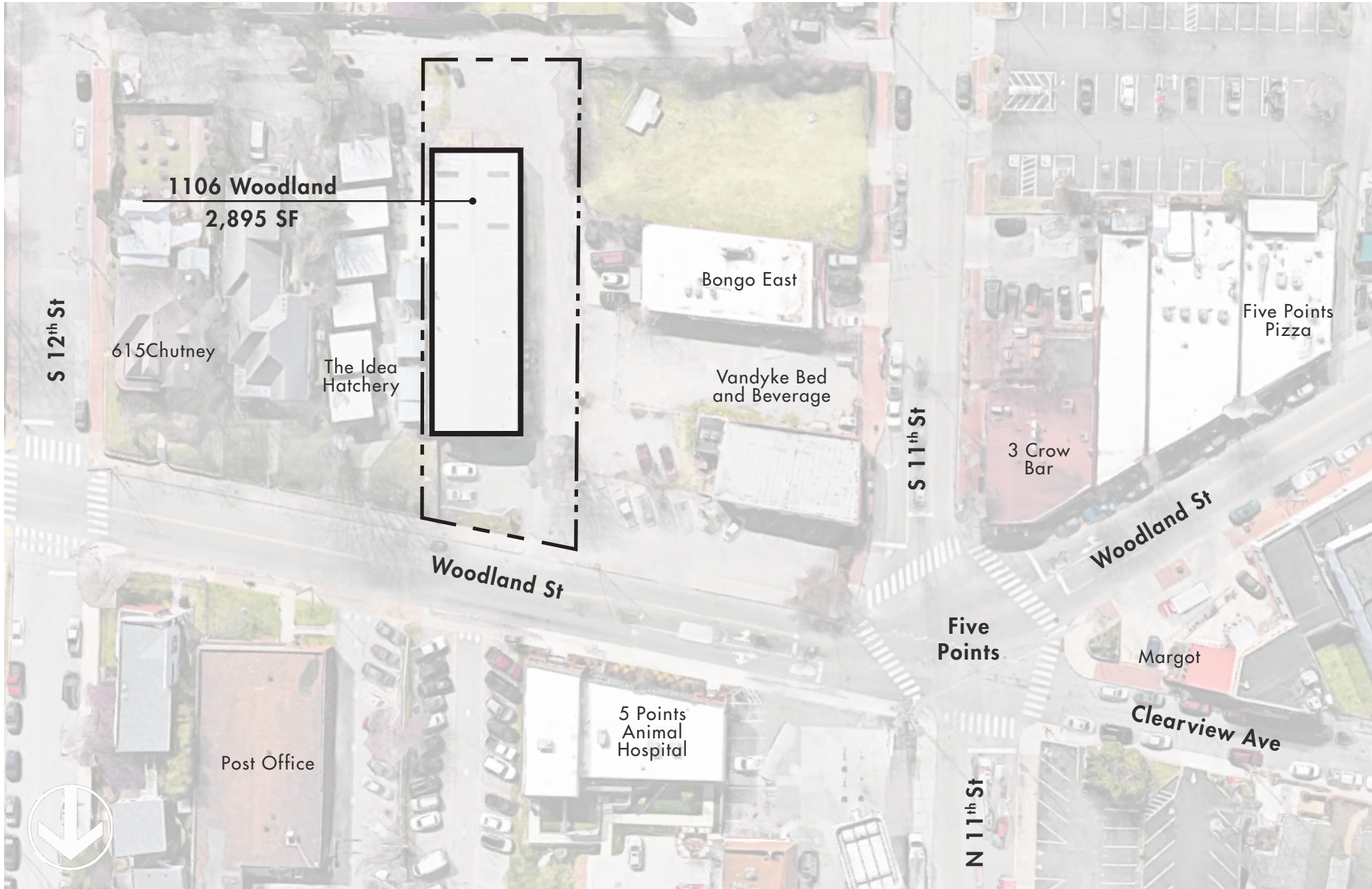
## MEZZANINE LEVEL



## GROUND LEVEL



# SITE PLAN



# AMENITY MAP

## DINING + DRINKING

- |                                    |                            |                               |
|------------------------------------|----------------------------|-------------------------------|
| 1 3 Crow Bar                       | 13 Cilantro                | 25 Koi Sushi & Thai           |
| 2 5 Points Tacos                   | 14 Rosemary & Beauty Queen | 26 Marché Artisan Foods       |
| 3 5 Spot                           | 15 Crying Wolf             | 27 Margot                     |
| 4 615Chutney                       | 16 Drifters                | 28 Nobles Kitchen & Beer Hall |
| 5 Attaboy                          | 17 Duke's Bar              | 29 Pied Piper Creamery        |
| 6 Basement East                    | 18 Edley's BBQ             | 30 Red Door Saloon            |
| 7 Batter'd & Fried                 | 19 Filling Station         | 31 Smith & Lentz Brewing      |
| 8 Bolton's Spicy Chicken & Fish    | 20 Five Points Pizza       | 32 Maru Sushi                 |
| 9 Bongo East                       | 21 Greko Greek             | 33 Wild Cow                   |
| 10 BoomBozz Craft Pizza & Taphouse | 22 Hunters Station         | 34 The Soda Parlor            |
| 11 Burger Up                       | 23 I Dream of Weenie       | 35 Treehouse                  |
| 12 Butcher & Bee                   | 24 Kawaii Poke             | 36 Yeast Nashville            |

## OFFICE + DEVELOPMENTS

- 37 Center 615
- 38 Hill Center Five Points
- 39 Wabash Building & 900 Main
- 40 Shoppes on Fatherland

## RESIDENTIAL + HOTEL

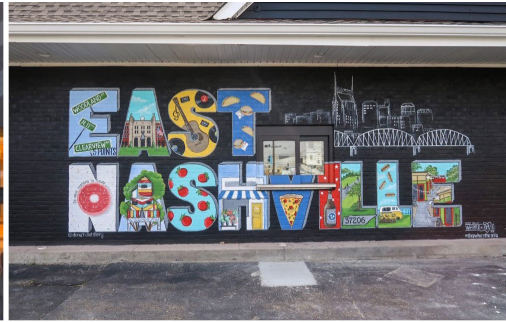
- 41 Amplify on Main Apartments
- 42 East End Lofts
- 43 Eastside Heights Apartments
- 44 Russell
- 45 Stacks on Main Apartments
- 46 Vandyke Bed & Beverage

## WELLNESS + SERVICES

- 47 Candle Bar
- 48 Cumberland Hardware
- 49 Float Horizon
- 50 FLWR Shop
- 51 O.Liv Body Bar
- 52 Rudy's Barbershop
- 53 Scout's Barbershop
- 54 Sips & Strokes
- 55 Turnip Truck
- 56 Woodland Wine Merchant



# THE NEIGHBORHOOD



## EAST NASHVILLE

The growing, thriving, eclectic, historic, and hip East Nashville has become one of the city's most-desired areas to live, work, and play. Its low-key vibe and neighborly personality make this community a great place to escape without leaving town.



1106 WOODLAND STREET  
NASHVILLE, TN

---

ANDREW MAXWELL

ANDREW.MAXWELL@FOUNDRYCOMMERCIAL.COM

615.324.0793

FOUNDRY  
COMMERCIAL

foundrycommercial.com

