



SAURAGE ROTENBERG
COMMERCIAL REAL ESTATE

RETAIL-COMMERCIAL FOR LEASE

FREEDOM SQUARE

17227 AIRLINE HWY., PRAIRIEVILLE, LA 70769

1,100 SF AVAILABLE



OFFERING SUMMARY

Lease Rate:	\$1,950 per month
Building Size:	7,000 SF
Available SF:	1,100 SF
Zoning:	MU

PROPERTY HIGHLIGHTS

- Property in Process of Being Redeveloped
- Located at Airline Highway and Swamp Road with 46,749 ADT
- Great End Cap Space with Drive Through

**** Owner is a Licensed Real Estate Agent ****



BOB KIRBY

Commercial Investment Specialist
(D)225.413.6162
bob@sr-cre.com

SAURAGE ROTENBERG COMMERCIAL REAL ESTATE, LLC

5135 Bluebonnet Boulevard
Baton Rouge, LA 70809
225.766.0000 | sauragerotenberg.com

The information contained herein has either been given to us by property owners or is from sources deemed reliable and is believed to be correct, it is not in any way warranted or guaranteed by Saurage Rotenberg Commercial Real Estate. This information is submitted subject to errors, omissions, changes in price, rental or other conditions, withdrawal without notice, and to any special listing conditions imposed by the principals. Licensed in Louisiana & Mississippi. px



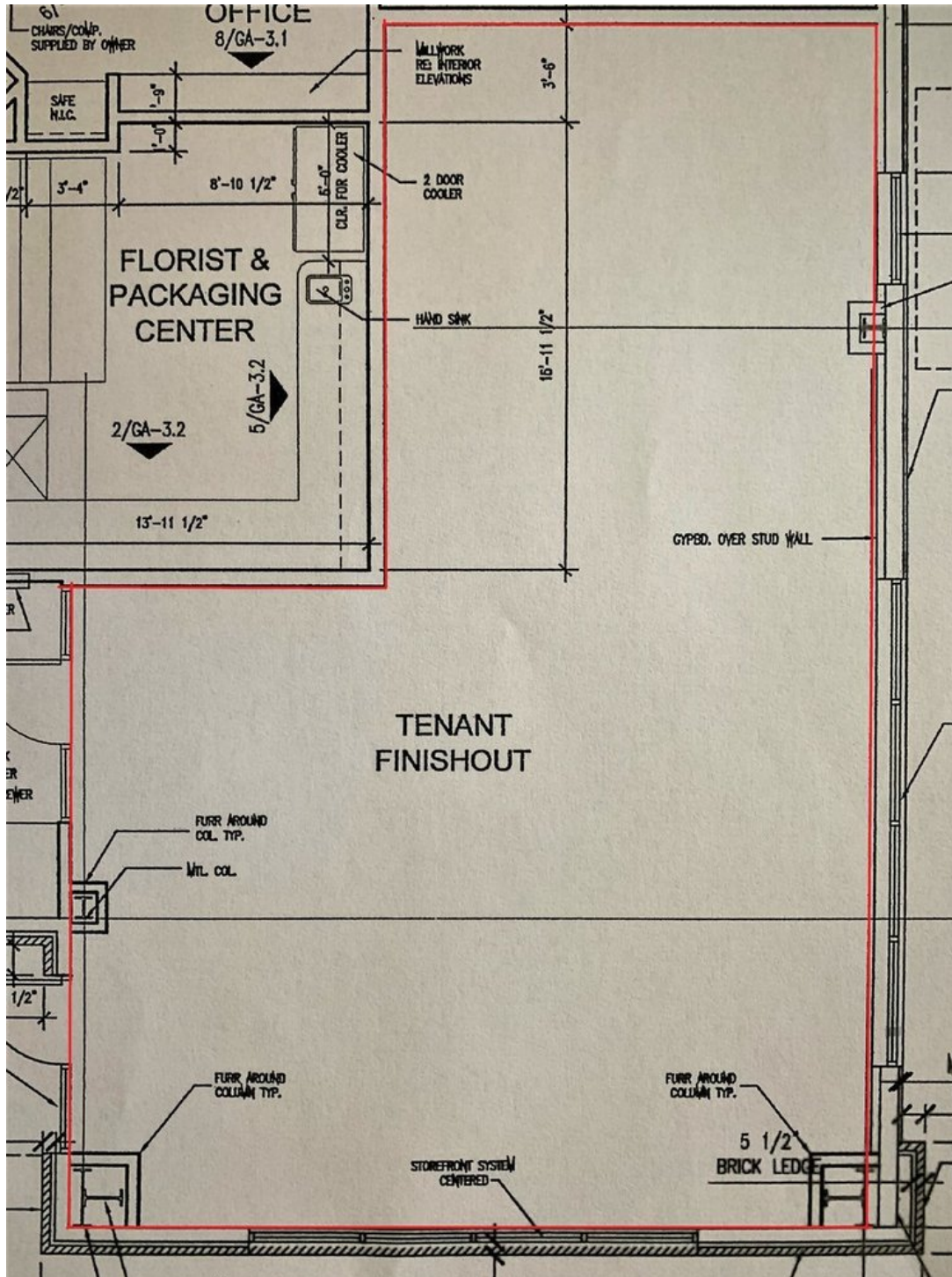
SAURAGE ROTENBERG
COMMERCIAL REAL ESTATE

RETAIL-COMMERCIAL FOR LEASE

FREEDOM SQUARE

17227 AIRLINE HWY., PRAIRIEVILLE, LA 70769

1,100 SF AVAILABLE



BOB KIRBY
Commercial Investment Specialist
(D)225.413.6162
bob@sr-cre.com

SAURAGE ROTENBERG COMMERCIAL REAL ESTATE, LLC
5135 Bluebonnet Boulevard
Baton Rouge, LA 70809
225.766.0000 | sauragerotenberg.com

The information contained herein has either been given to us by property owners or is from sources deemed reliable and is believed to be correct, it is not in any way warranted or guaranteed by Saurage Rotenberg Commercial Real Estate. This information is submitted subject to errors, omissions, changes in price, rental or other conditions, withdrawal without notice, and to any special listing conditions imposed by the principals. Licensed in Louisiana & Mississippi.px



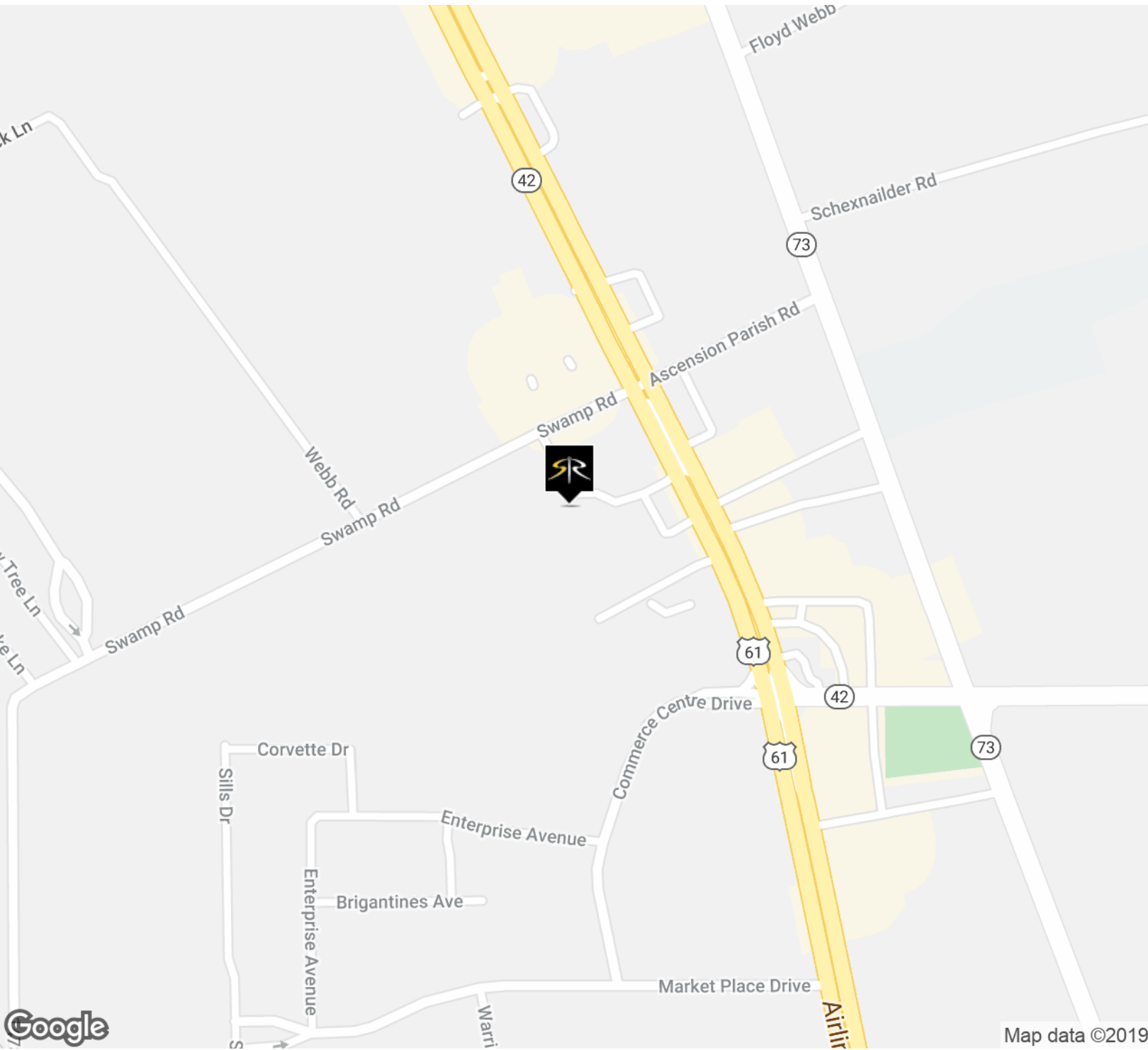
SAURAGE ROTENBERG
COMMERCIAL REAL ESTATE

RETAIL-COMMERCIAL FOR LEASE

FREEDOM SQUARE

17227 AIRLINE HWY., PRAIRIEVILLE, LA 70769

1,100 SF AVAILABLE



BOB KIRBY

Commercial Investment Specialist
(D)225.413.6162
bob@sr-cre.com

SAURAGE ROTENBERG COMMERCIAL REAL ESTATE, LLC

5135 Bluebonnet Boulevard
Baton Rouge, LA 70809
225.766.0000 | sauragerotenberg.com

The information contained herein has either been given to us by property owners or is from sources deemed reliable and is believed to be correct, it is not in any way warranted or guaranteed by Saurage Rotenberg Commercial Real Estate. This information is submitted subject to errors, omissions, changes in price, rental or other conditions, withdrawal without notice, and to any special listing conditions imposed by the principals. Licensed in Louisiana & Mississippi. px



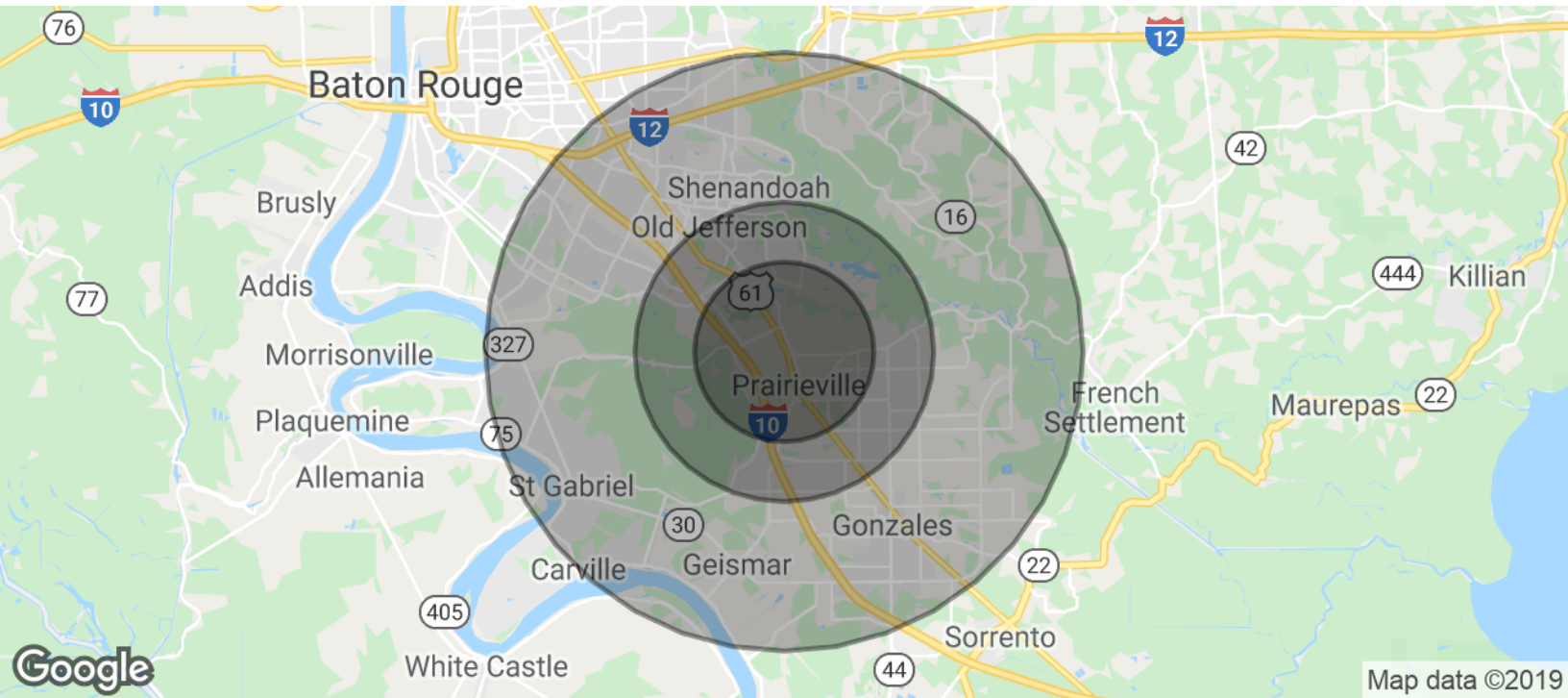
SAURAGE ROTENBERG
COMMERCIAL REAL ESTATE

RETAIL-COMMERCIAL FOR LEASE

FREEDOM SQUARE

17227 AIRLINE HWY., PRAIRIEVILLE, LA 70769

1,100 SF AVAILABLE



POPULATION	3 MILES	5 MILES	10 MILES
Total Population	24,048	59,486	249,132
Median Age	33.9	34.4	35.2
Median Age (Male)	32.9	32.9	33.5
Median Age (Female)	35.1	35.6	36.9
HOUSEHOLDS & INCOME	3 MILES	5 MILES	10 MILES
Total Households	8,484	21,303	94,667
# of Persons per HH	2.8	2.8	2.6
Average HH Income	\$93,800	\$93,091	\$81,466
Average House Value	\$271,311	\$268,928	\$231,149

* Demographic data derived from 2010 US Census

BOB KIRBY
Commercial Investment Specialist
(D)225.413.6162
bob@sr-cre.com

SAURAGE ROTENBERG COMMERCIAL REAL ESTATE, LLC
5135 Bluebonnet Boulevard
Baton Rouge, LA 70809
225.766.0000 | sauragerotenberg.com

The information contained herein has either been given to us by property owners or is from sources deemed reliable and is believed to be correct, it is not in any way warranted or guaranteed by Saurage Rotenberg Commercial Real Estate. This information is submitted subject to errors, omissions, changes in price, rental or other conditions, withdrawal without notice, and to any special listing conditions imposed by the principals. Licensed in Louisiana & Mississippi.px