

Office Condo For Sale

667 Somerville Ave. Somerville, MA



Stephanie Deering

m. 781.608.5964 | sdeering@abgrealty.com

307 Cambridge Street, Cambridge, MA | 617.492.9900 | www.abgrealty.com

PROPERTY DESCRIPTION

Rare opportunity to own an office condo with great street visibility in a prime location adjacent to **Porter Square**. This modern office offers an open layout, kitchenette, 2 baths, finished basement space, and four parking spots, *which includes two garage parking spots*. Enjoy easy access to the **Red Line & Commuter Rail** in **Porter Square** along with the shops, services & restaurants found there and in nearby **Union Square, Davis Square & Harvard Square**. Allowed uses are office, medical or professional uses as permitted by the City of Somerville.



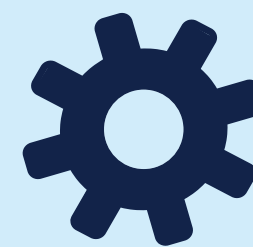
HIGHLIGHTS



Building Size: 1,456 SF
Finished Basement Space: 400 SF



**Walking distance to Red Line & Commuter Rail
Porter Square**



Gas Heat
Condo Fee: \$235 Per Month

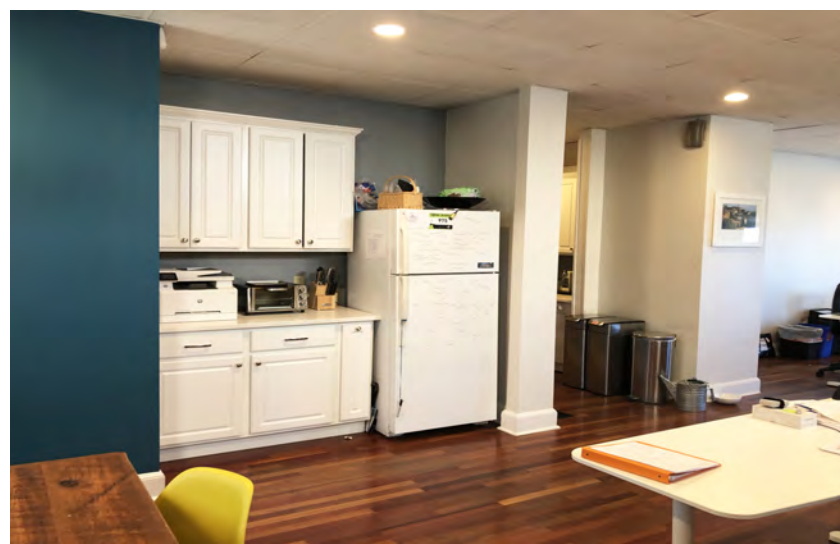
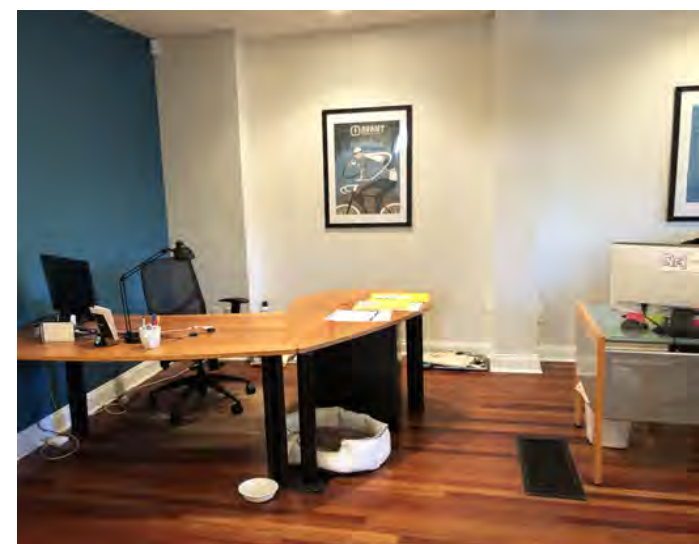
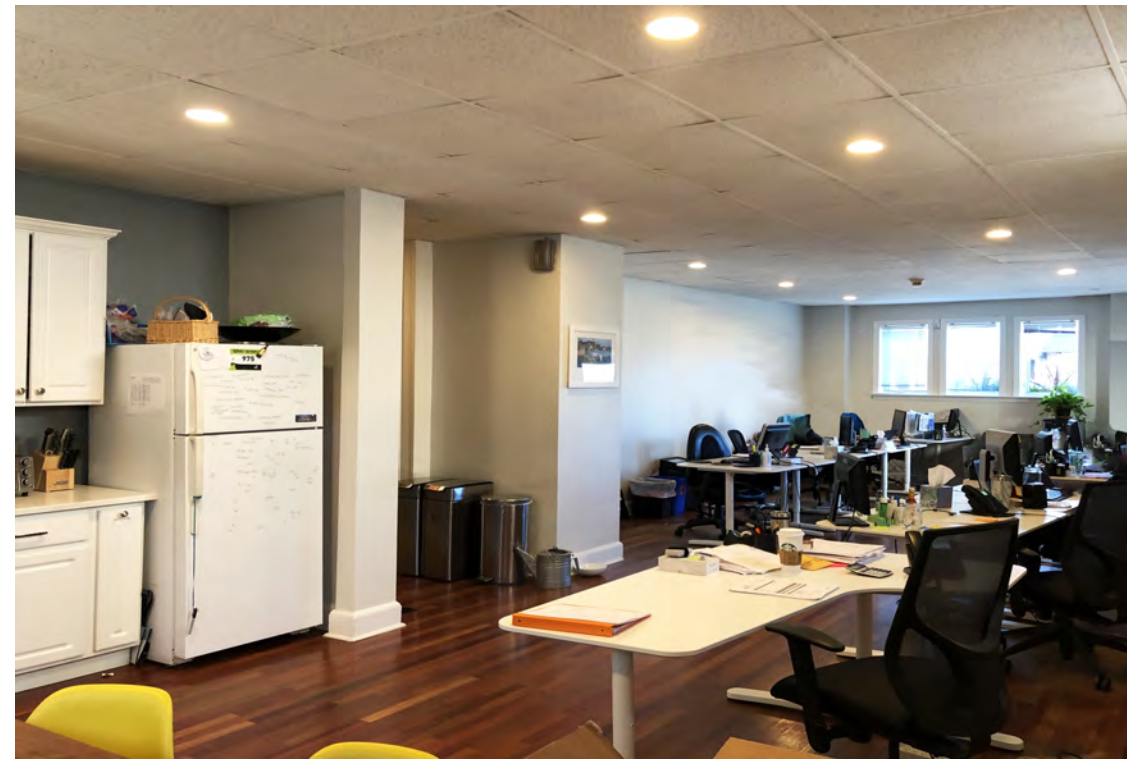


4 Parking Spots



Stephanie Deering
m. 781.608.5964 | sdeering@abgrealty.com
307 Cambridge Street, Cambridge, MA | 617.492.9900 | www.abgrealty.com

AREA MAP



Stephanie Deering
m. 781.608.5964 | sdeering@abgrealty.com

All rights reserved. The information contained here has been obtained through sources deemed reliable but cannot be guaranteed as to its accuracy. Any information of special interest should be obtained through independent verification.

307 Cambridge Street, Cambridge, MA | 617.492.9900 | www.abgrealty.com