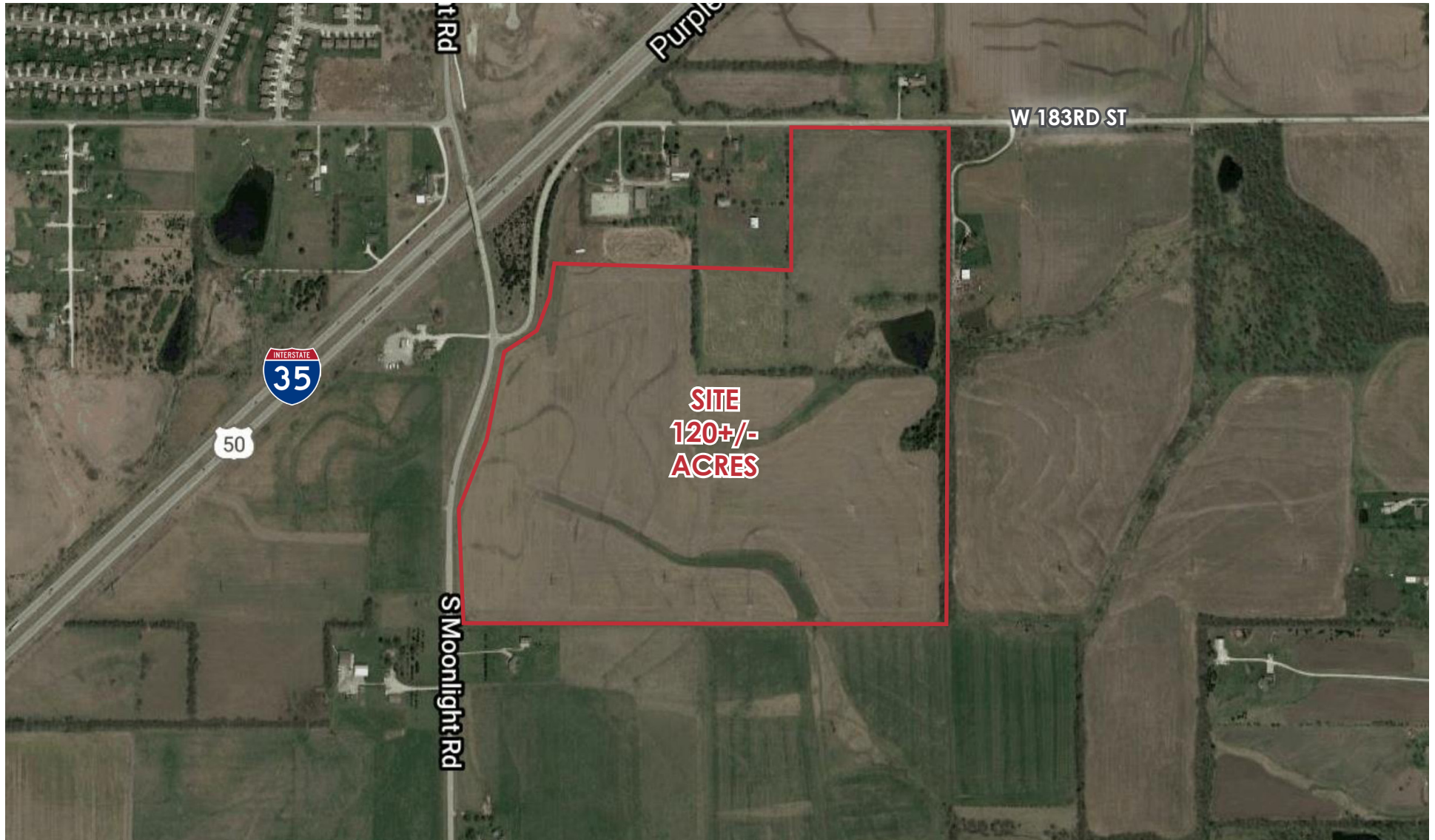


FOR SALE - 120 ACRES

183RD & MOONLIGHT RD, GARDNER, KS 66030



DICK STEPHENS
(913) 491-3366
ds@reececommercial.com

REECE COMMERCIAL REAL ESTATE
8005 W 110th St, Ste 150, Overland Park, KS 66210
Main: 913.652.4300

Selling Land & Farms Since 1976

183RD & MOONLIGHT RD, GARDNER, KS 66030

PROPERTY INFORMATION

LOCATION Located at the southeast corner of 183rd & Moonlight Rd, Gardner, KS

ACRES 120 +/-

PRICE \$2,220,000 (\$18,500.00 Per Acre)

ZONING Agricultural

UTILITIES Water, Electric

SCHOOLS Gardner-Edgerton District

FARMING Leases in place for crop and parture rent

INCOME Approx. \$15,000.00 per year

ADDITIONAL INFO

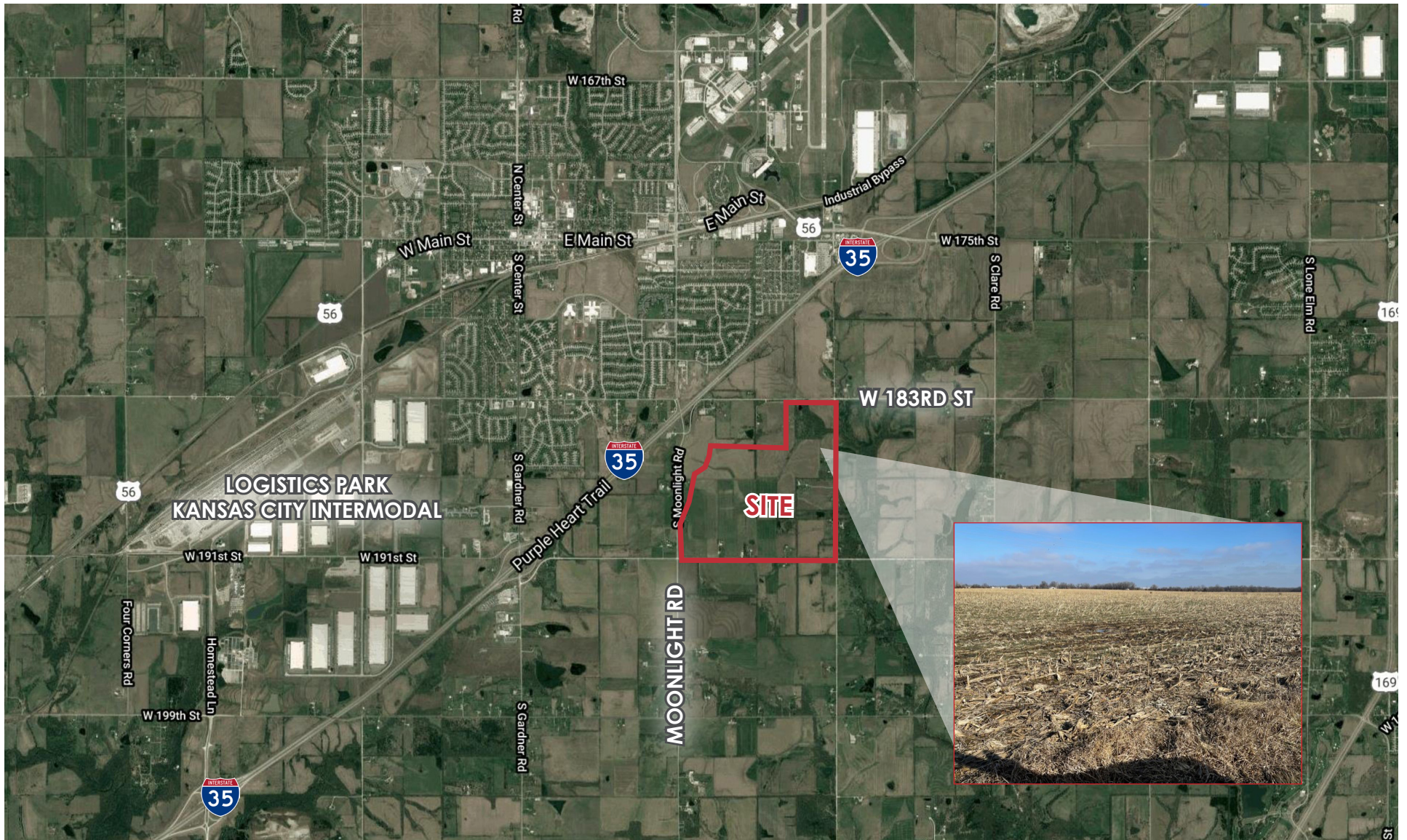
- BNSF Kansas City Logistic Intermodel is 2 miles west
- Hillsdale 4500 Acre Recreational Lake is 6 miles south

The information in this package has been obtained from sources believed reliable. While we do not doubt its accuracy we have not verified it and make no guarantee, warranty or representation about it. It is your responsibility to independently confirm its accuracy and completeness. Any projections, opinions, assumptions, or estimates used are for example only and do not represent the current or future performance of the property. You and your advisors should conduct a careful, independent investigation of the property to determine to your satisfaction the suitability of the property for your needs. © 2020



RECE
COMMERCIAL REAL ESTATE

a Berkshire Hathaway Affiliate



The information in this package has been obtained from sources believed reliable. While we do not doubt its accuracy we have not verified it and make no guarantee, warranty or representation about it. It is your responsibility to independently confirm its accuracy and completeness. Any projections, opinions, assumptions, or estimates used are for example only and do not represent the current or future performance of the property. You and your advisors should conduct a careful, independent investigation of the property to determine to your satisfaction the suitability of the property for your needs. © 2020