

# FORMER CAMP SANDY COVE FOR SALE

436 REFLECTION LANE - HIGH VIEW, WV 26808

187± ACRES

# FORMER CAMP SANDY COVE FOR SALE

**187± ACRES**

**ASKING PRICE: ~~\$1,250,000~~ PRICE REDUCED: \$850,000**

## PROPERTY FEATURES

- Former overnight camp with sleeping capacity of 341± in High View, West Virginia
- 187± Acres of beautiful primarily wooded area with rolling topography and 2 ponds
- 27 Cabins
- Dining Hall with Commercial Kitchen
- Gymnasium
- 2 Swimming Pools
- Lodge with several Multi-Purpose Rooms
- Infirmary
- Craft/Pottery Shop
- Pavillion
- Workout Building
- Apartment
- Director's Cabin
- Office
- RV Sewer Hookups
- Well and Private Septic System



For more information, please contact:

**BRIAN CRAVER, CCIM**

Senior Vice President/Broker  
704.319.5072

[brian.craver@foundrycommercial.com](mailto:brian.craver@foundrycommercial.com)

In cooperation with:

**RICHARD BELL**

Adams-Nelson & Associates, Inc.  
540.664.2424 v  
540.247.6501 m

[richardbell@adamscompanies.com](mailto:richardbell@adamscompanies.com)

**FOUNDRY**  
COMMERCIAL

2301 Sugar Bush Road, Suite 220

Raleigh, NC 27612

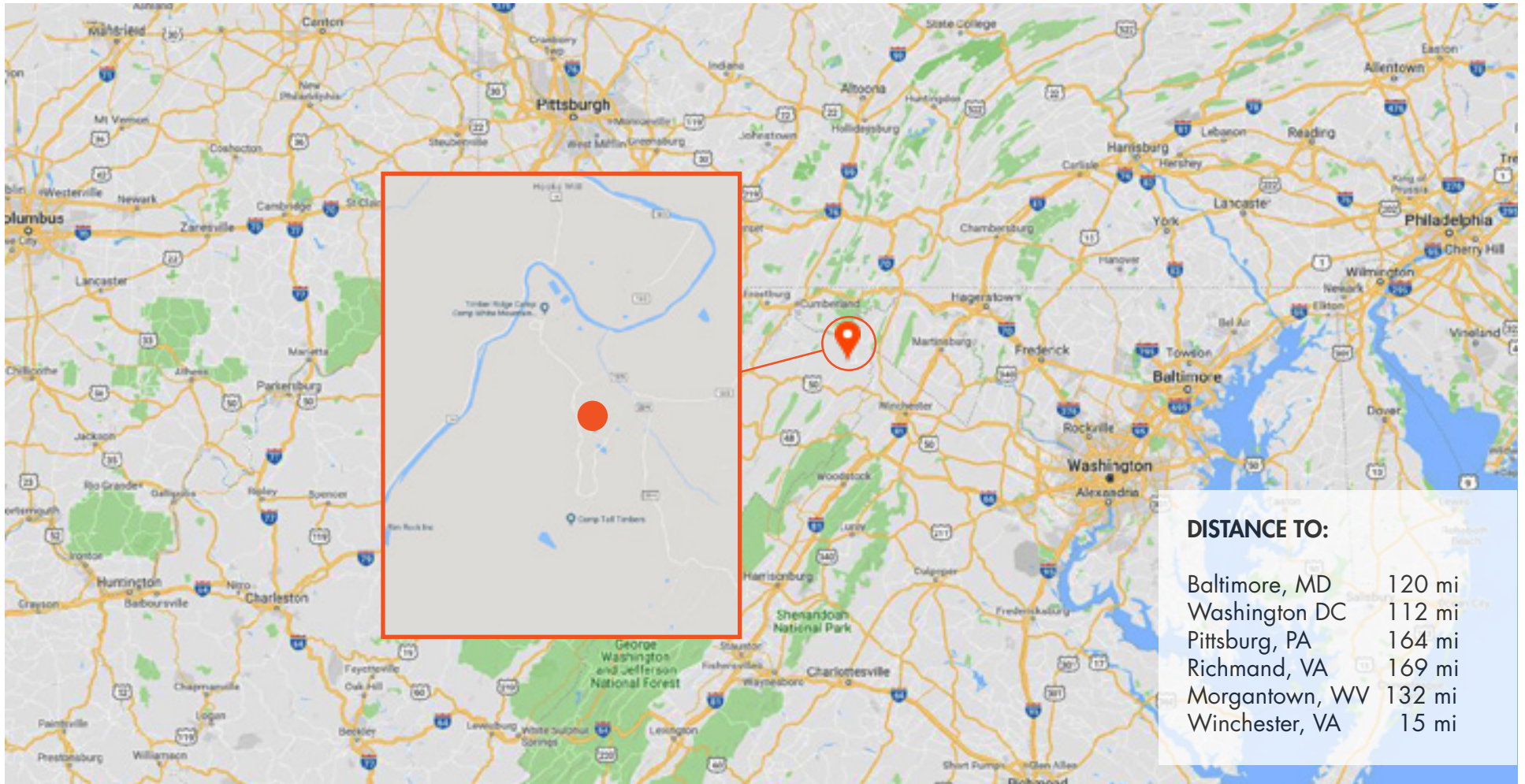
[foundrycommercial.com](http://foundrycommercial.com)

Although all information is furnished regarding for sale, rental or financing is from sources we deem reliable, such information has not been verified and no express representation is made nor is any to be implied as to the accuracy thereof, and it is submitted subject to errors, omissions, changes of price, rental or other conditions, prior sale, lease or financing, or withdrawal without notice. All sizes are approximate and subject to survey.

# FORMER CAMP SANDY COVE FOR SALE

187± ACRES

## PROXIMITY MAP



### DISTANCE TO:

Baltimore, MD	120 mi
Washington DC	112 mi
Pittsburg, PA	164 mi
Richmand, VA	169 mi
Morgantown, WV	132 mi
Winchester, VA	15 mi

For more information, please contact:

**BRIAN CRAVER, CCIM**

Senior Vice President/Broker

704.319.5072

brian.craver@foundrycommercial.com

In cooperation with:

**RICHARD BELL**

Adams-Nelson & Associates, Inc.

540.664.2424 v

540.247.6501 m

richardbell@adamscompanies.com

**FOUNDRY**  
COMMERCIAL

2301 Sugar Bush Road, Suite 220

Raleigh, NC 27612

[foundrycommercial.com](http://foundrycommercial.com)

Although all information is furnished regarding for sale, rental or financing is from sources we deem reliable, such information has not been verified and no express representation is made nor is any to be implied as to the accuracy thereof, and it is submitted subject to errors, omissions, changes of price, rental or other conditions, prior sale, lease or financing, or withdrawal without notice. All sizes are approximate and subject to survey.

# FORMER CAMP SANDY COVE FOR SALE

**187± ACRES**

## AERIAL



For more information, please contact:

**BRIAN CRAVER, CCIM**

Senior Vice President/Broker

704.319.5072

[brian.craver@foundrycommercial.com](mailto:brian.craver@foundrycommercial.com)

In cooperation with:

**RICHARD BELL**

Adams-Nelson & Associates, Inc.

540.664.2424 v

540.247.6501 m

[richardbell@adamscompanies.com](mailto:richardbell@adamscompanies.com)

**FOUNDRY**  
COMMERCIAL

2301 Sugar Bush Road, Suite 220

Raleigh, NC 27612

[foundrycommercial.com](http://foundrycommercial.com)

Although all information is furnished regarding for sale, rental or financing is from sources we deem reliable, such information has not been verified and no express representation is made nor is any to be implied as to the accuracy thereof, and it is submitted subject to errors, omissions, changes of price, rental or other conditions, prior sale, lease or financing, or withdrawal without notice. All sizes are approximate and subject to survey.

# FORMER CAMP SANDY COVE FOR SALE

**187± ACRES**

## PROPERTY PHOTOS



Cabin 1 & 2



Executive Office



Cabin 3 & 4



Cabin 7 & 8

For more information, please contact:

**BRIAN CRAVER, CCIM**

Senior Vice President/Broker

704.319.5072

brian.craver@foundrycommercial.com

In cooperation with:

**RICHARD BELL**

Adams-Nelson & Associates, Inc.

540.664.2424 v

540.247.6501 m

richardbell@adamscompanies.com

**FOUNDRY**  
COMMERCIAL

2301 Sugar Bush Road, Suite 220

Raleigh, NC 27612

[foundrycommercial.com](http://foundrycommercial.com)

Although all information is furnished regarding for sale, rental or financing is from sources we deem reliable, such information has not been verified and no express representation is made nor is any to be implied as to the accuracy thereof, and it is submitted subject to errors, omissions, changes of price, rental or other conditions, prior sale, lease or financing, or withdrawal without notice. All sizes are approximate and subject to survey.

# FORMER CAMP SANDY COVE FOR SALE

**187± ACRES**

## PROPERTY PHOTOS



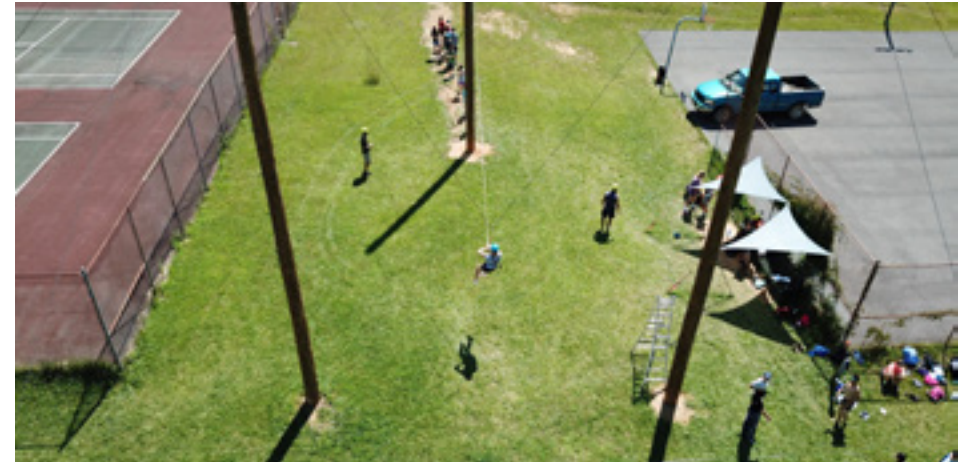
Basketball Court



Bonfire Area



Archery Field



Giant Swing

For more information, please contact:

**BRIAN CRAVER, CCIM**

Senior Vice President/Broker

704.319.5072

brian.craver@foundrycommercial.com

In cooperation with:

**RICHARD BELL**

Adams-Nelson & Associates, Inc.

540.664.2424 v

540.247.6501 m

richardbell@adamscompanies.com

**FOUNDRY**  
COMMERCIAL

2301 Sugar Bush Road, Suite 220

Raleigh, NC 27612

[foundrycommercial.com](http://foundrycommercial.com)

Although all information is furnished regarding for sale, rental or financing is from sources we deem reliable, such information has not been verified and no express representation is made nor is any to be implied as to the accuracy thereof, and it is submitted subject to errors, omissions, changes of price, rental or other conditions, prior sale, lease or financing, or withdrawal without notice. All sizes are approximate and subject to survey.

# FORMER CAMP SANDY COVE FOR SALE

**187± ACRES**

## PROPERTY PHOTOS



Dining Area



Director's Cabin Kitchen



Director's Cabin Kitchen



Kitchen

For more information, please contact:

**BRIAN CRAVER, CCIM**

Senior Vice President/Broker

704.319.5072

[brian.craver@foundrycommercial.com](mailto:brian.craver@foundrycommercial.com)

In cooperation with:

**RICHARD BELL**

Adams-Nelson & Associates, Inc.

540.664.2424 v

540.247.6501 m

[richardbell@adamscompanies.com](mailto:richardbell@adamscompanies.com)

Although all information is furnished regarding for sale, rental or financing is from sources we deem reliable, such information has not been verified and no express representation is made nor is any to be implied as to the accuracy thereof, and it is submitted subject to errors, omissions, changes of price, rental or other conditions, prior sale, lease or financing, or withdrawal without notice. All sizes are approximate and subject to survey.

**FOUNDRY**  
COMMERCIAL

2301 Sugar Bush Road, Suite 220

Raleigh, NC 27612

[foundrycommercial.com](http://foundrycommercial.com)

# FORMER CAMP SANDY COVE FOR SALE

**187± ACRES**

## PROPERTY PHOTOS



Office



Kitchen



Kitchen



Laundry Room

For more information, please contact:

**BRIAN CRAVER, CCIM**

Senior Vice President/Broker

704.319.5072

[brian.craver@foundrycommercial.com](mailto:brian.craver@foundrycommercial.com)

In cooperation with:

**RICHARD BELL**

Adams-Nelson & Associates, Inc.

540.664.2424 v

540.247.6501 m

[richardbell@adamscompanies.com](mailto:richardbell@adamscompanies.com)

**FOUNDRY**  
COMMERCIAL

2301 Sugar Bush Road, Suite 220

Raleigh, NC 27612

[foundrycommercial.com](http://foundrycommercial.com)

Although all information is furnished regarding for sale, rental or financing is from sources we deem reliable, such information has not been verified and no express representation is made nor is any to be implied as to the accuracy thereof, and it is submitted subject to errors, omissions, changes of price, rental or other conditions, prior sale, lease or financing, or withdrawal without notice. All sizes are approximate and subject to survey.

# FORMER CAMP SANDY COVE FOR SALE

**187± ACRES**

## PROPERTY PHOTOS



Gym Interior



Gym Interior



Outdoor Gaga



Skate Park & Pools

For more information, please contact:  
**BRIAN CRAVER, CCIM**  
Senior Vice President/Broker  
704.319.5072  
brian.craver@foundrycommercial.com

In cooperation with:  
**RICHARD BELL**  
Adams-Nelson & Associates, Inc.  
540.664.2424 v  
540.247.6501 m  
richardbell@adamscompanies.com

**FOUNDRY**  
COMMERCIAL  
2301 Sugar Bush Road, Suite 220  
Raleigh, NC 27612  
[foundrycommercial.com](http://foundrycommercial.com)

Although all information is furnished regarding for sale, rental or financing is from sources we deem reliable, such information has not been verified and no express representation is made nor is any to be implied as to the accuracy thereof, and it is submitted subject to errors, omissions, changes of price, rental or other conditions, prior sale, lease or financing, or withdrawal without notice. All sizes are approximate and subject to survey.

# FORMER CAMP SANDY COVE FOR SALE

**187± ACRES**

## PROPERTY PHOTOS



Nature/Garden & Exercise Room



Gym Exterior



Horse Barn



Pond & Dining Hall

For more information, please contact:

**BRIAN CRAVER, CCIM**

Senior Vice President/Broker

704.319.5072

brian.craver@foundrycommercial.com

In cooperation with:

**RICHARD BELL**

Adams-Nelson & Associates, Inc.

540.664.2424 v

540.247.6501 m

richardbell@adamscompanies.com

**FOUNDRY**  
COMMERCIAL

2301 Sugar Bush Road, Suite 220

Raleigh, NC 27612

[foundrycommercial.com](http://foundrycommercial.com)

Although all information is furnished regarding for sale, rental or financing is from sources we deem reliable, such information has not been verified and no express representation is made nor is any to be implied as to the accuracy thereof, and it is submitted subject to errors, omissions, changes of price, rental or other conditions, prior sale, lease or financing, or withdrawal without notice. All sizes are approximate and subject to survey.

# FORMER CAMP SANDY COVE FOR SALE

**187± ACRES**

## PROPERTY PHOTOS



Pool 1



Riding Rings



Volleyball Courts



Pool 2

For more information, please contact:

**BRIAN CRAVER, CCIM**

Senior Vice President/Broker

704.319.5072

brian.craver@foundrycommercial.com

In cooperation with:

**RICHARD BELL**

Adams-Nelson & Associates, Inc.

540.664.2424 v

540.247.6501 m

richardbell@adamscompanies.com

**FOUNDRY**  
COMMERCIAL

2301 Sugar Bush Road, Suite 220

Raleigh, NC 27612

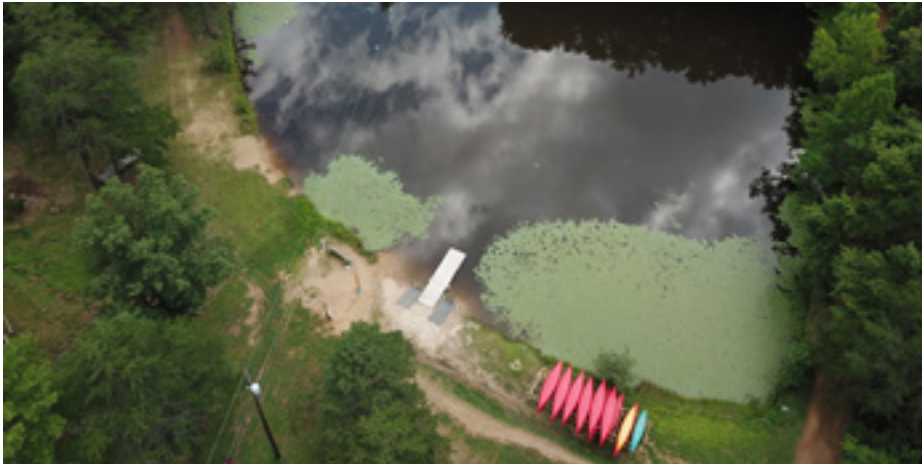
[foundrycommercial.com](http://foundrycommercial.com)

Although all information is furnished regarding for sale, rental or financing is from sources we deem reliable, such information has not been verified and no express representation is made nor is any to be implied as to the accuracy thereof, and it is submitted subject to errors, omissions, changes of price, rental or other conditions, prior sale, lease or financing, or withdrawal without notice. All sizes are approximate and subject to survey.

# FORMER CAMP SANDY COVE FOR SALE

**187± ACRES**

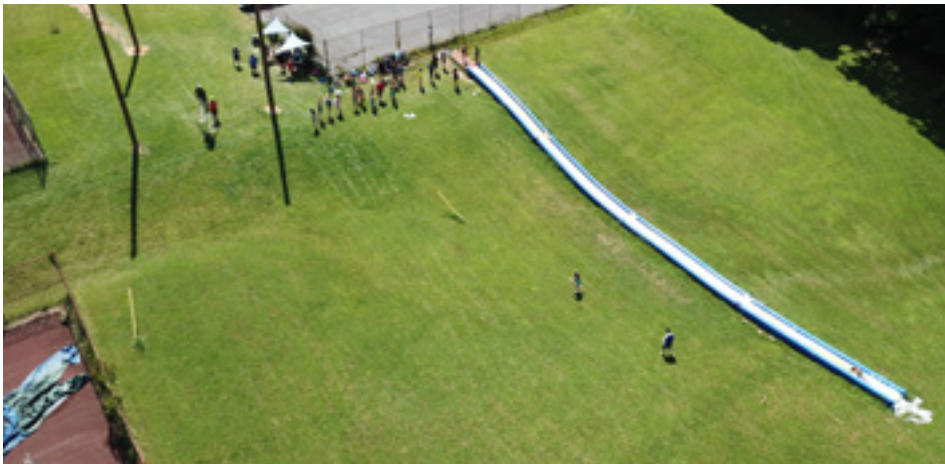
## PROPERTY PHOTOS



Lake



Zip line



Zoom Floom



Soccer Field

For more information, please contact:

**BRIAN CRAVER, CCIM**

Senior Vice President/Broker

704.319.5072

[brian.craver@foundrycommercial.com](mailto:brian.craver@foundrycommercial.com)

In cooperation with:

**RICHARD BELL**

Adams-Nelson & Associates, Inc.

540.664.2424 v

540.247.6501 m

[richardbell@adamscompanies.com](mailto:richardbell@adamscompanies.com)

**FOUNDRY**  
COMMERCIAL

2301 Sugar Bush Road, Suite 220

Raleigh, NC 27612

[foundrycommercial.com](http://foundrycommercial.com)

Although all information is furnished regarding for sale, rental or financing is from sources we deem reliable, such information has not been verified and no express representation is made nor is any to be implied as to the accuracy thereof, and it is submitted subject to errors, omissions, changes of price, rental or other conditions, prior sale, lease or financing, or withdrawal without notice. All sizes are approximate and subject to survey.

# FORMER CAMP SANDY COVE FOR SALE

**187± ACRES**

## PROPERTY PHOTOS



Infirmary Second Floor



Tennis Courts



Infirmary First Floor



Tennis Courts

For more information, please contact:

**BRIAN CRAVER, CCIM**

Senior Vice President/Broker

704.319.5072

[brian.craver@foundrycommercial.com](mailto:brian.craver@foundrycommercial.com)

In cooperation with:

**RICHARD BELL**

Adams-Nelson & Associates, Inc.

540.664.2424 v

540.247.6501 m

[richardbell@adamscompanies.com](mailto:richardbell@adamscompanies.com)

**FOUNDRY**  
COMMERCIAL

2301 Sugar Bush Road, Suite 220

Raleigh, NC 27612

[foundrycommercial.com](http://foundrycommercial.com)

Although all information is furnished regarding for sale, rental or financing is from sources we deem reliable, such information has not been verified and no express representation is made nor is any to be implied as to the accuracy thereof, and it is submitted subject to errors, omissions, changes of price, rental or other conditions, prior sale, lease or financing, or withdrawal without notice. All sizes are approximate and subject to survey.

# FORMER CAMP SANDY COVE FOR SALE

**187± ACRES**

## PROPERTY PHOTOS



Barn



Crafts & Pottery with Public Restrooms



Air Rifle



Trip Pit

For more information, please contact:

**BRIAN CRAVER, CCIM**

Senior Vice President/Broker

704.319.5072

brian.craver@foundrycommercial.com

In cooperation with:

**RICHARD BELL**

Adams-Nelson & Associates, Inc.

540.664.2424 v

540.247.6501 m

richardbell@adamscompanies.com

**FOUNDRY**  
COMMERCIAL

2301 Sugar Bush Road, Suite 220

Raleigh, NC 27612

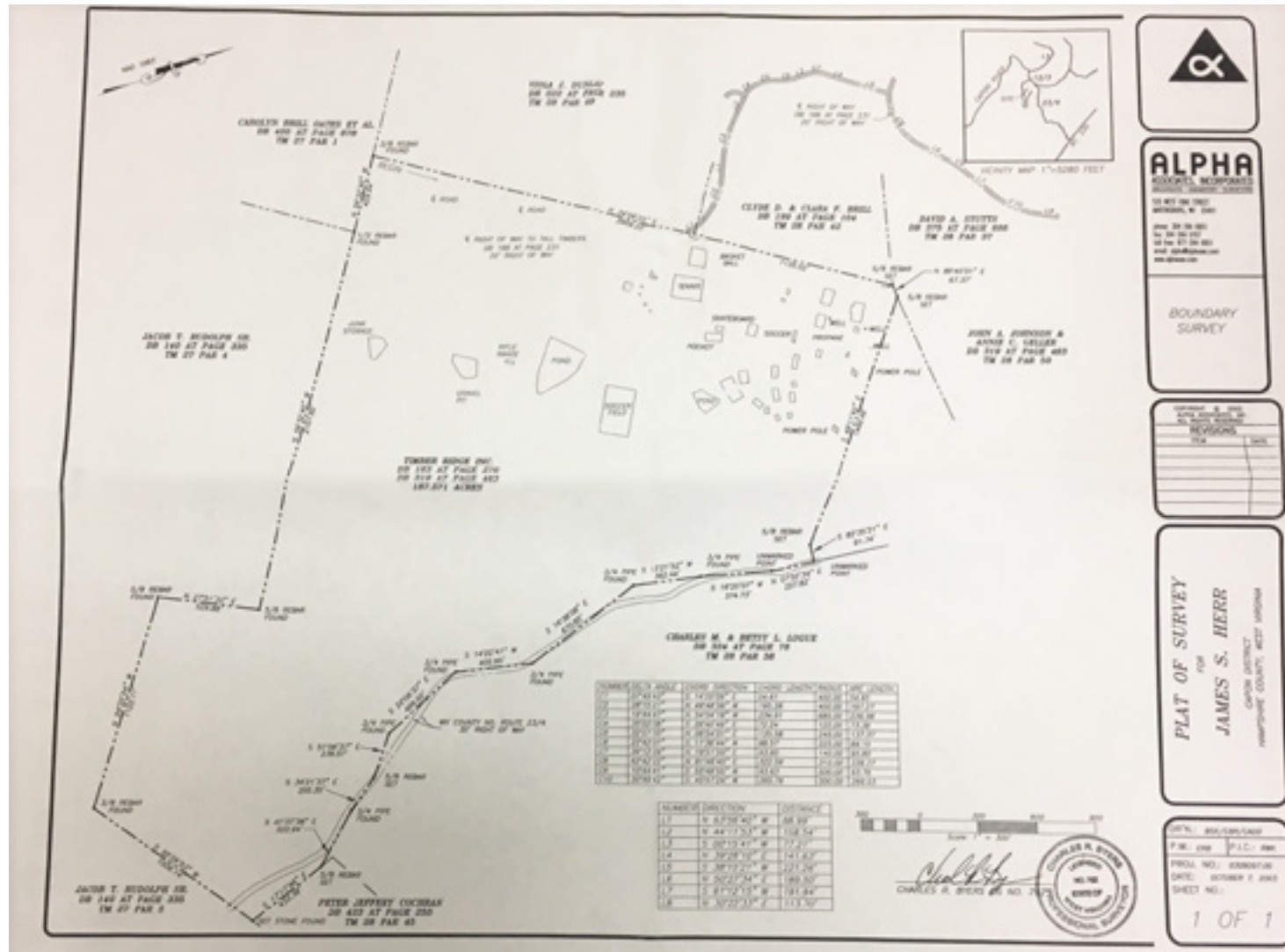
[foundrycommercial.com](http://foundrycommercial.com)

Although all information is furnished regarding for sale, rental or financing is from sources we deem reliable, such information has not been verified and no express representation is made nor is any to be implied as to the accuracy thereof, and it is submitted subject to errors, omissions, changes of price, rental or other conditions, prior sale, lease or financing, or withdrawal without notice. All sizes are approximate and subject to survey.

# FORMER CAMP SANDY COVE FOR SALE

187± ACRES

## SURVEY



For more information, please contact:  
**BRIAN CRAVER, CCIM**  
 Senior Vice President/Broker  
 704.319.5072  
 brian.craver@foundrycommercial.com

In cooperation with:  
**RICHARD BELL**  
 Adams-Nelson & Associates, Inc.  
 540.664.2424 v  
 540.247.6501 m  
 richardbell@adamscompanies.com

**FOUNDRY**  
 COMMERCIAL  
 2301 Sugar Bush Road, Suite 220  
 Raleigh, NC 27612  
[foundrycommercial.com](http://foundrycommercial.com)

Although all information is furnished regarding for sale, rental or financing is from sources we deem reliable, such information has not been verified and no express representation is made nor is any to be implied as to the accuracy thereof, and it is submitted subject to errors, omissions, changes of price, rental or other conditions, prior sale, lease or financing, or withdrawal without notice. All sizes are approximate and subject to survey.

# FORMER CAMP SANDY COVE FOR SALE

**187± ACRES**



For more information, please contact:

**BRIAN CRAVER, CCIM**

Senior Vice President/Broker

704.319.5072

[brian.craver@foundrycommercial.com](mailto:brian.craver@foundrycommercial.com)

In cooperation with:

**RICHARD BELL**

Adams-Nelson & Associates, Inc.

540.664.2424 v

540.247.6501 m

[richardbell@adamscompanies.com](mailto:richardbell@adamscompanies.com)

**FOUNDRY**  
COMMERCIAL

2301 Sugar Bush Road, Suite 220

Raleigh, NC 27612

[foundrycommercial.com](http://foundrycommercial.com)

Although all information is furnished regarding for sale, rental or financing is from sources we deem reliable, such information has not been verified and no express representation is made nor is any to be implied as to the accuracy thereof, and it is submitted subject to errors, omissions, changes of price, rental or other conditions, prior sale, lease or financing, or withdrawal without notice. All sizes are approximate and subject to survey.