

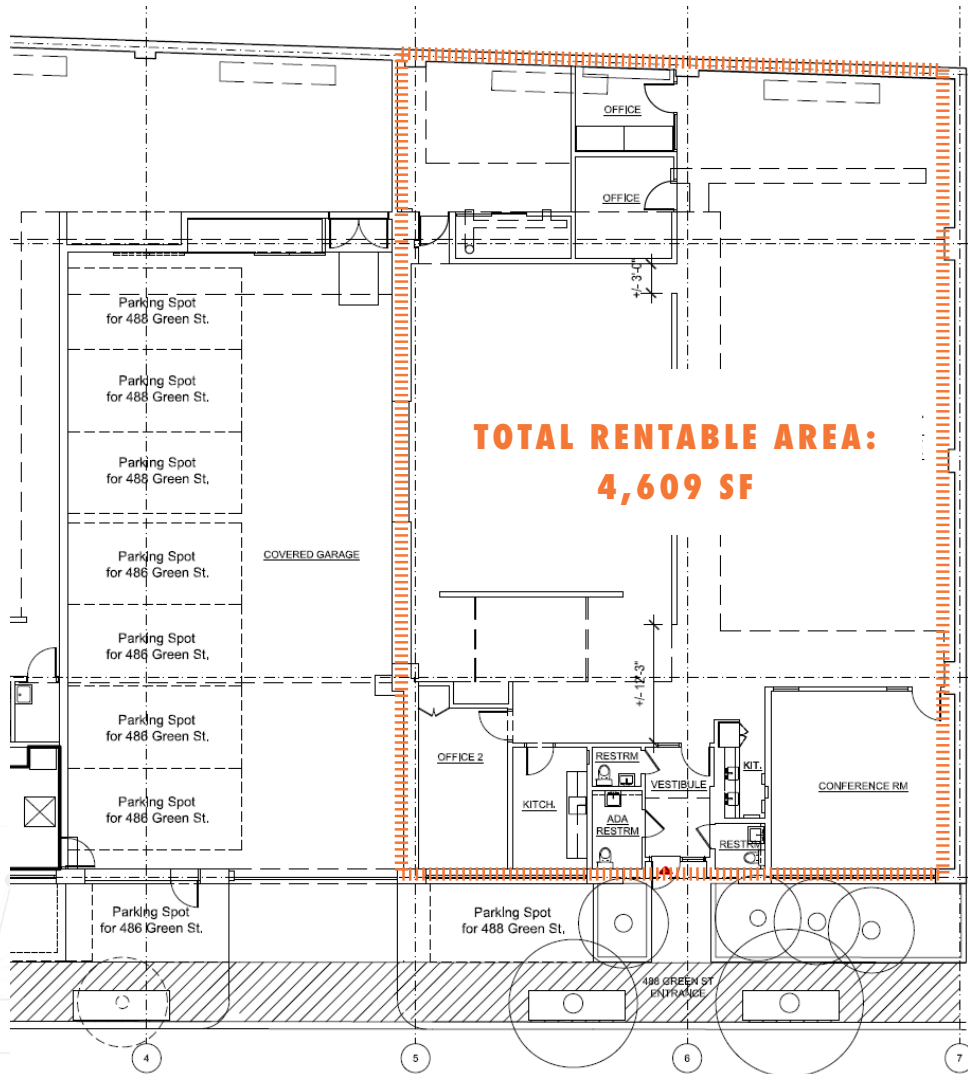
488

**GREEN STREET
CAMBRIDGE, MA**

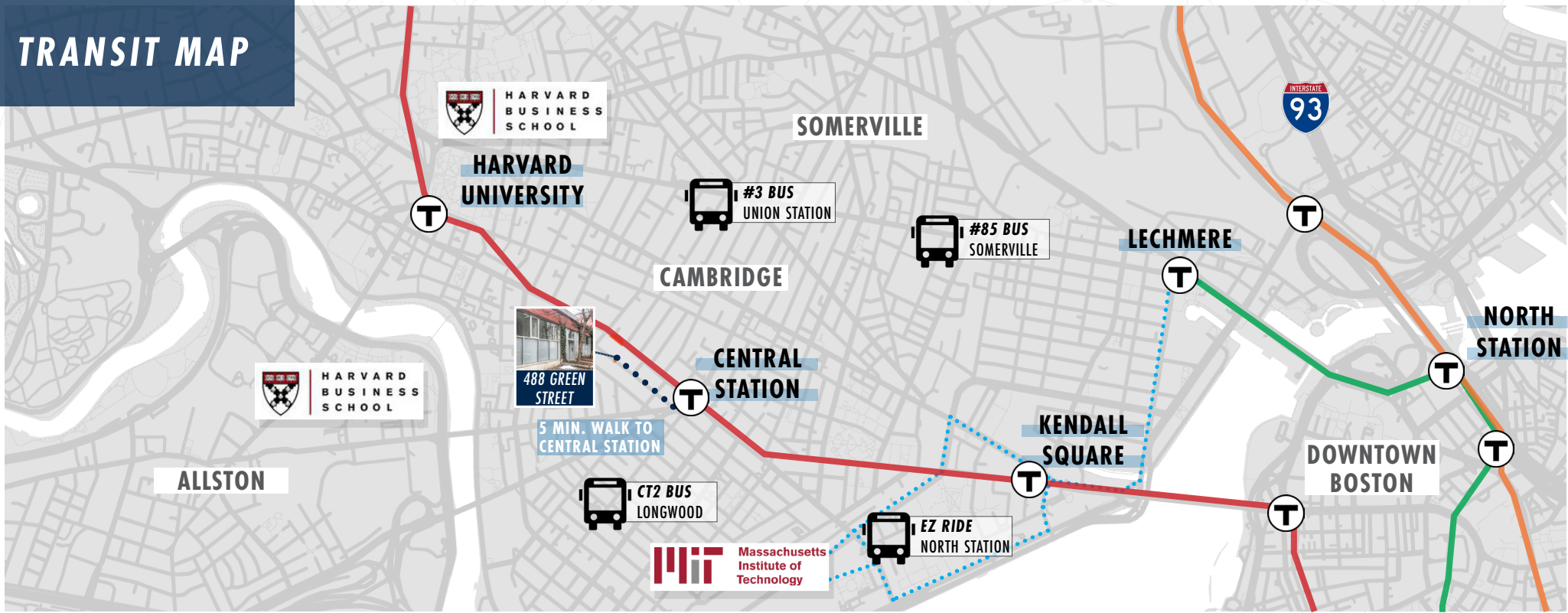


Rare Opportunity to Lease This 4,690 +/- Square Foot Single Story Commercial Space. Walking Distance to Central Square Redline, Kendall Square/Cambridgeport Life Science Cluster, as Well as Both Harvard University & MIT.

The Space Boasts High Ceilings and Lots of Natural Light, Making it an Ideal Innovation Space. Perfect for Startups, Architectural or Engineering Firms, Tech Research/dry lab, Light R&D, and Other Professional Uses. Indoor and Outdoor Parking is Available Onsite.



TRANSIT MAP



PROPERTY HIGHLIGHTS - 488 GREEN STREET

4,690 +/- Square Feet

Single Story, Street Level

Available Immediately

High Ceilings

Ample Natural Light

Short Walk to Central Sq. Redline MBTA

Close to Restaurants, Shops and Other Amenities

Potential Subdivision Option

