

1700 W MECHANIC ST

HARRISONVILLE, MO 64701



HIGHLIGHTS

- » 9,888 SF Retail Building & Warehouse
- » Constructed in 1985 & Reconstructed in 2015
- » 3 Open Ended Pole Buildings on the Rear of Lot
- » Storefront Windows
- » 1 Overhead Door
- » 25 Paved Parking Spaces
- » 48 x 900 Large Front Room, a 48 x 64 Room and 32 x 63 Room
- » Bank Foreclosure

FOR SALE

\$529,900

DEMOGRAPHICS

	3 Mile	5 Mile	10 Mile
2019 AVE HOUSEHOLD INCOME	\$55,883	\$67,170	\$72,153

Mary Fay

Brokerage Associate

Phone: 816.348.4839

Fax: 816.793.3165

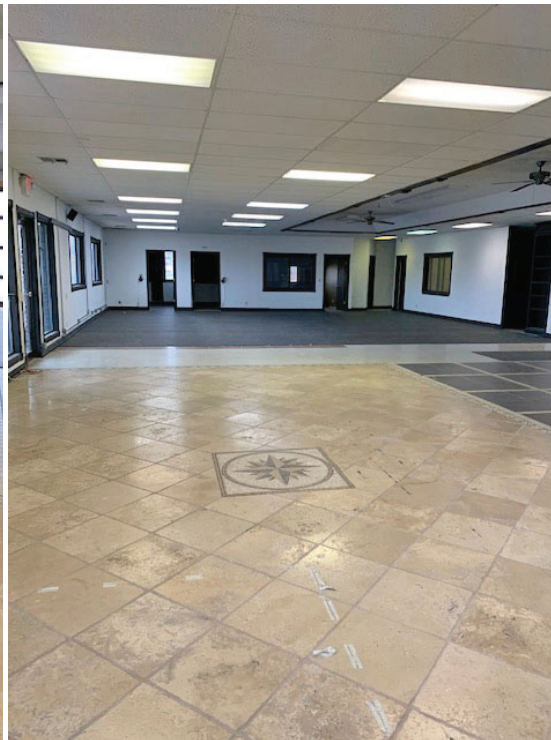
Email: mfay@reececommercial.com

The information above has been obtained from sources believed reliable. While we do not doubt its accuracy we have not verified it and make no guarantee, warranty or representation about it. It is your responsibility to independently confirm its accuracy and completeness. Any projections, opinions, assumptions, or estimates used are for example only and do not represent the current or future performance of the property. You and your advisors should conduct a careful, independent investigation of the property to determine to your satisfaction the suitability of the property for your needs.

© 2020

PHOTOS

1700 W MECHANIC ST, HARRISONVILLE, MO 64702



Mary Fay
Brokerage Associate
Phone: 816.348.4839
Fax: 816.793.3165
Email: mfay@reececommercial.com

The information above has been obtained from sources believed reliable. While we do not doubt its accuracy we have not verified it and make no guarantee, warranty or representation about it. It is your responsibility to independently confirm its accuracy and completeness. Any projections, opinions, assumptions, or estimates used are for example only and do not represent the current or future performance of the property. You and your advisors should conduct a careful, independent investigation of the property to determine to your satisfaction the suitability of the property for your needs.
© 2020

PHOTOS

1700 W MECHANIC ST, HARRISONVILLE, MO 64702



Mary Fay

Brokerage Associate

Phone: 816.348.4839

Fax: 816.793.3165

Email: mfay@reececommercial.com

The information above has been obtained from sources believed reliable. While we do not doubt its accuracy we have not verified it and make no guarantee, warranty or representation about it. It is your responsibility to independently confirm its accuracy and completeness. Any projections, opinions, assumptions, or estimates used are for example only and do not represent the current or future performance of the property. You and your advisors should conduct a careful, independent investigation of the property to determine to your satisfaction the suitability of the property for your needs.
© 2020

AERIAL

1700 W MECHANIC ST, HARRISONVILLE, MO 64702



Mary Fay

Brokerage Associate

Phone: 816.348.4839

Fax: 816.793.3165

Email: mfay@reececommercial.com

The information above has been obtained from sources believed reliable. While we do not doubt its accuracy we have not verified it and make no guarantee, warranty or representation about it. It is your responsibility to independently confirm its accuracy and completeness. Any projections, opinions, assumptions, or estimates used are for example only and do not represent the current or future performance of the property. You and your advisors should conduct a careful, independent investigation of the property to determine to your satisfaction the suitability of the property for your needs.
© 2020