



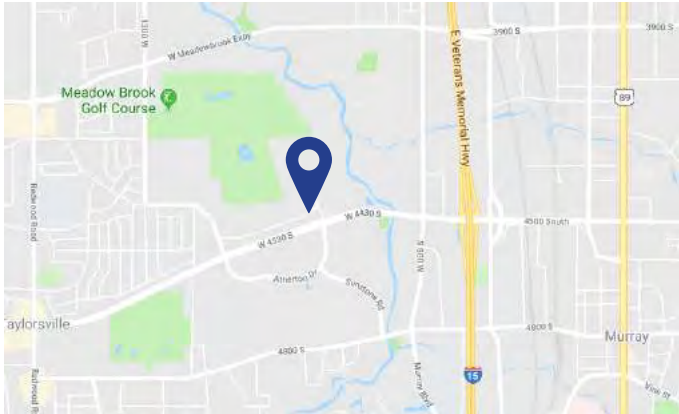
# Sublease Available

**Sorenson Research Park  
860 West LeVoy Drive  
Taylorsville, UT**

### Space Profile

- Premises RSF** Up to 107,626 RSF, Divisible to 17,500 RSF
- Rental Rate** \$16.00 per SF, full service
- Availability** 56,000 SF Immediately; balance of building on 9/1/20
- Term** Master lease expiration 6/30/22  
**Shorter-term subleases available**
- Submarket** Sorenson Research Park
- Parking** Up to 5/1,000 SF

### Map



### Features

- Located in the center of Salt Lake Valley at Sorenson Research Park, an upscale campus-style-environment
- Excellent access to I-15 and I-215
- Close proximity to Salt Lake Community College, two golf courses and the Jordan River Parkway trail system
- UTA bus stop and restaurant/hotel amenities nearby
- Spacious 2-story lobby atrium
- Partially furnished
- Multiple conference rooms, training rooms and offices.
- Emergency generator and UPS
- Building signage available

### For More Information

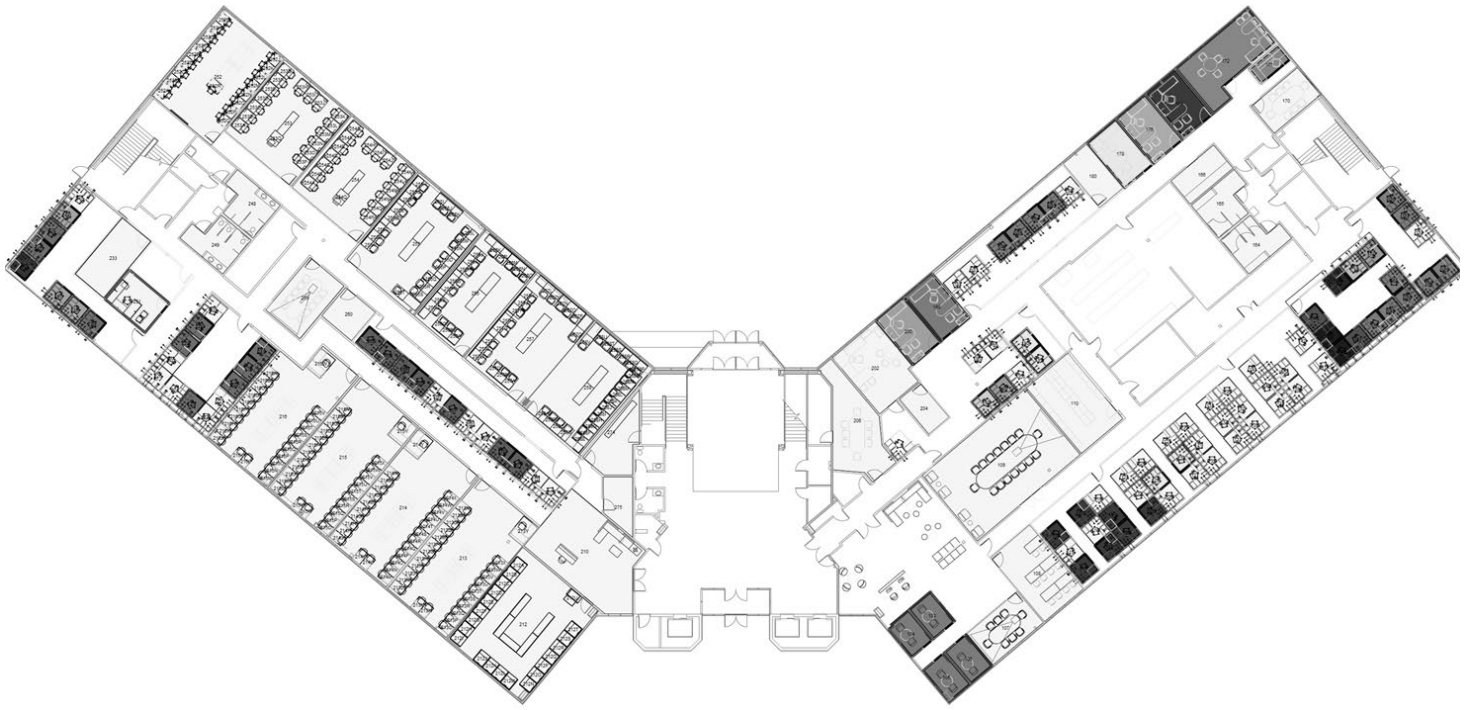
**Mike Chappell**  
Vice President  
801.300.4516 (office)  
801.558.0975 (cell)  
mchappell@cresa.com

**Cresa**  
136 South Main Street  
Suite 500  
Salt Lake City, UT 84101

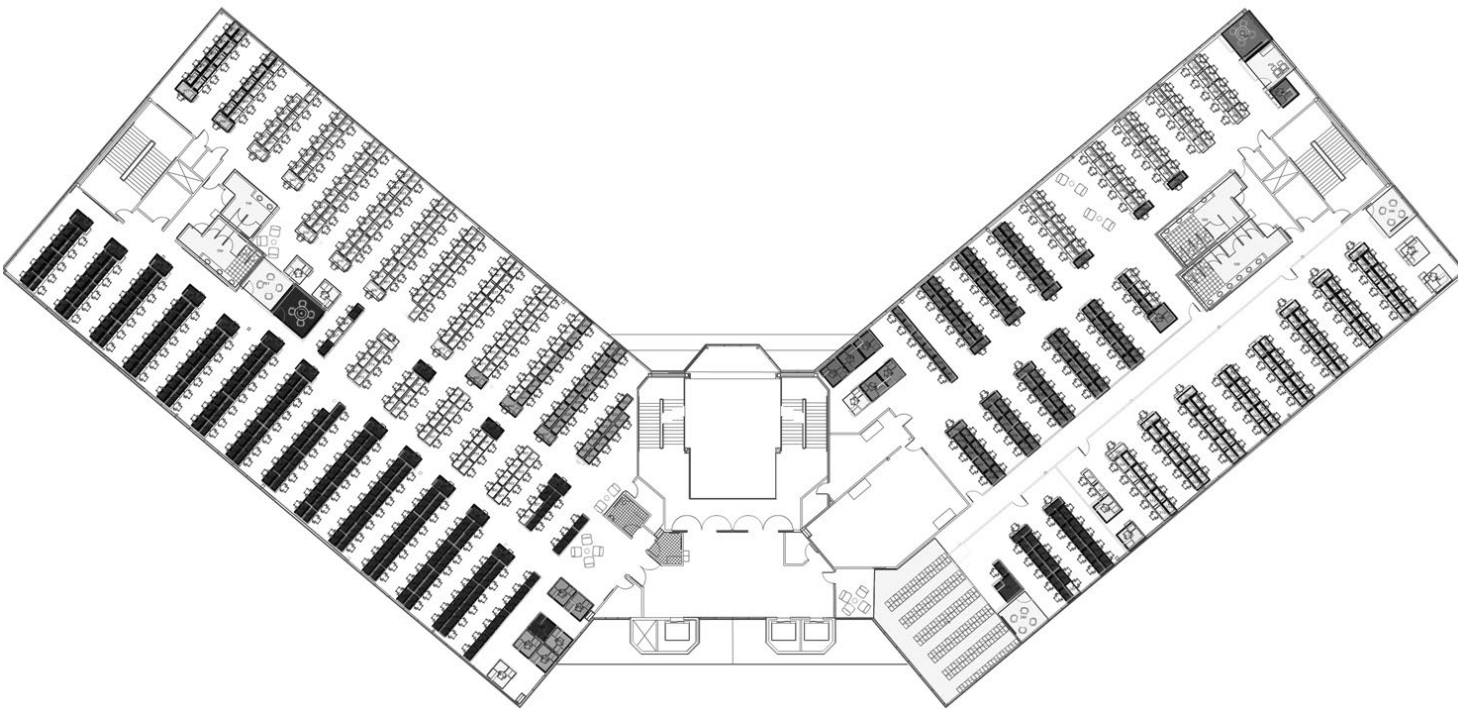
Even though obtained from sources deemed reliable, no warranty or representation, express or implied, is made as to the accuracy of the information herein, and it is subject to errors, omissions, change of price, rental or other conditions, withdrawal without notice, and to any special listing conditions imposed by our principals.



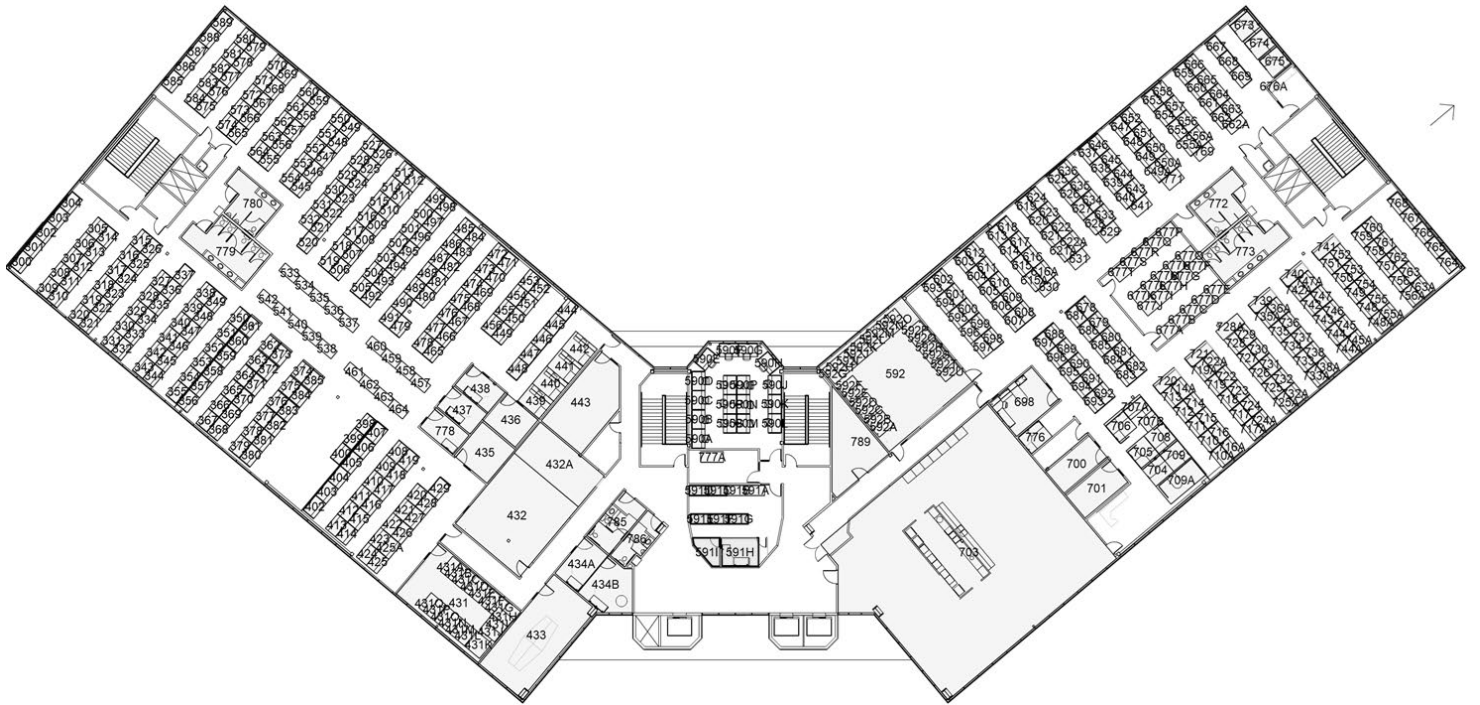
## 1st Floor



## 2nd Floor



### 3rd Floor



### For More Information

**Mike Chappell**  
Vice President  
801.300.4516 (office)  
801.558.0975 (cell)  
mchappell@cresa.com

Sorenson Research Park  
860 West LeVoy Drive  
Taylorsville, UT



## Interior Photos



## For More Information

**Mike Chappell**  
Vice President  
801.300.4516 (office)  
801.558.0975 (cell)  
[mchappell@cresa.com](mailto:mchappell@cresa.com)