



**7323 Beverly Boulevard  
Los Angeles, CA 90036**

**Sublease  
Available**

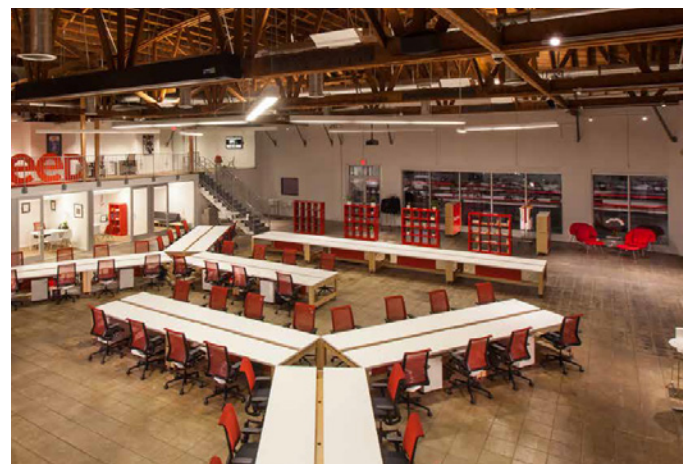
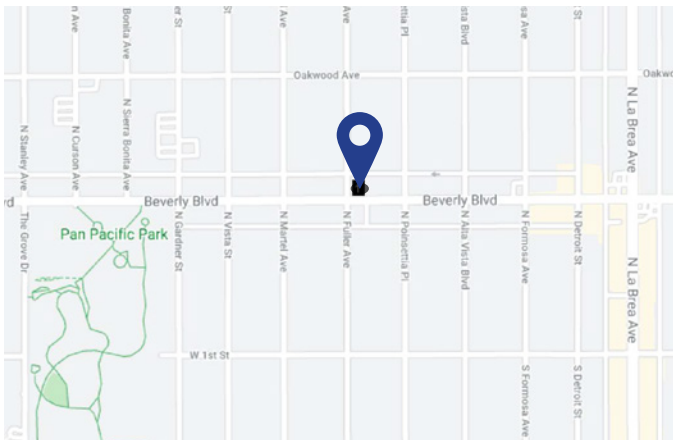
### Space Profile

<b>Premises</b>	±11,317 SF
<b>Rental Rate</b>	\$4.35 PSF, MG
<b>Availability</b>	Immediately
<b>Term</b>	Through August 31, 2023
<b>Parking</b>	11 Reserved spaces (free of charge) and additional parking available

### Features

- Stand-alone creative office
- Beautifully restored and renovated bow truss building
- Prime, high-visible corner location
- COVID-19 friendly, no elevators or shared areas

### Map



### For More Information

**Marc Bretter**  
310.943.5141 direct  
310.351.0481 mobile  
mbretter@cresa.com  
BRE# 01819443

**Griffin Farriss**  
213.430.2455 direct  
561.676.2601 mobile  
gfarriss@cresa.com  
BRE# 01939767

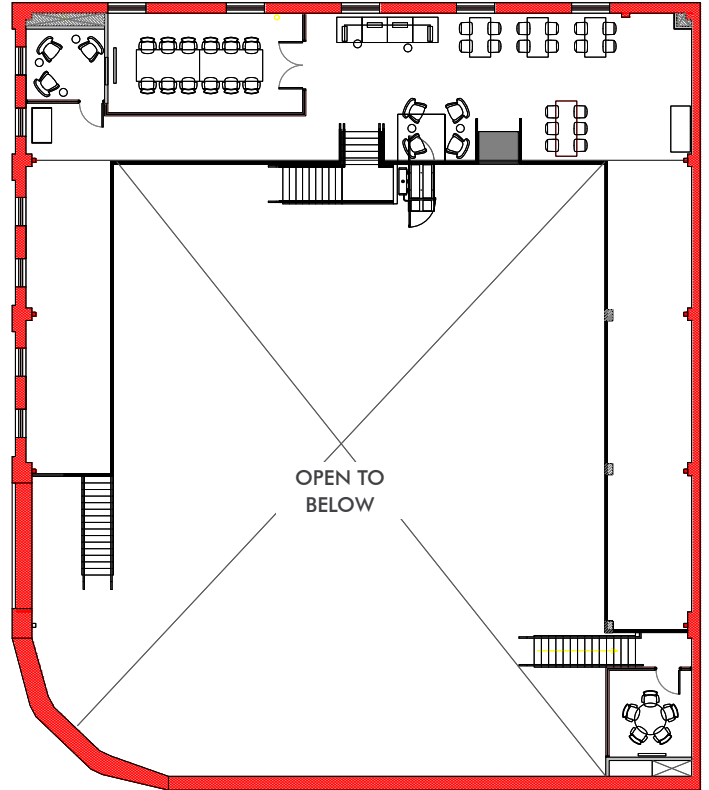
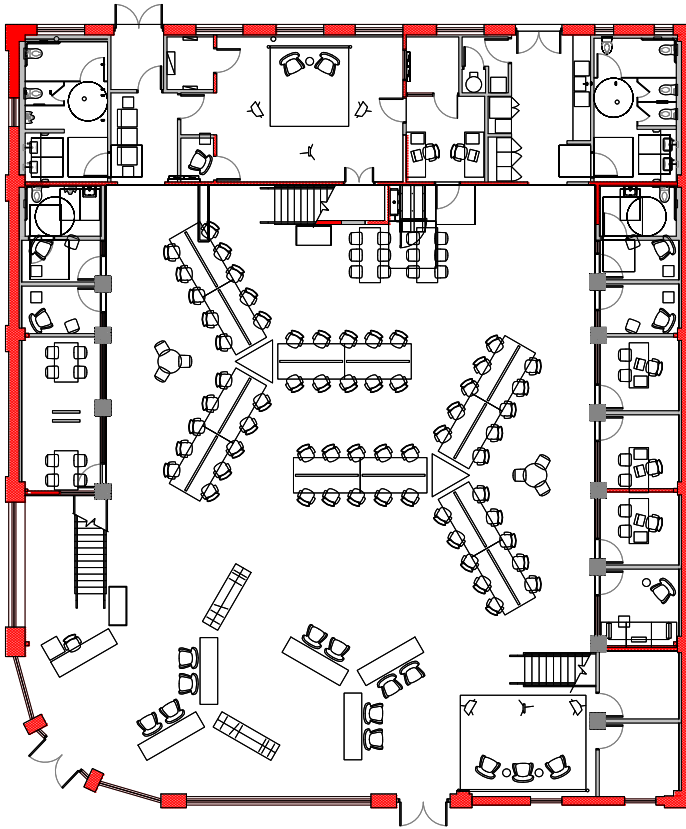
515 South Flower Street, Suite 3000, Los Angeles, CA 90071



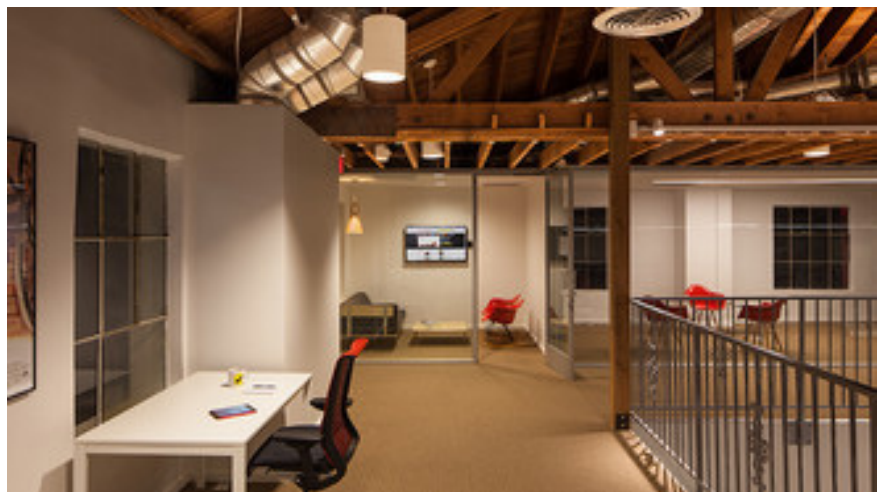
Even though obtained from sources deemed reliable, no warranty or representation, express or implied, is made as to the accuracy of the information herein, and it is subject to errors, omissions, change of price, rental or other conditions, withdrawal without notice, and to any special listing conditions imposed by our principals.

GROUND FLOOR - ±8,517 SF

MEZZANINE - ±2,800 SF



Interior Photos



For More Information

**Marc Bretter**

310.943.5141 direct  
310.351.0481 mobile  
mbretter@cresa.com  
BRE# 01819443

**Griffin Farriss**

213.430.2455 direct  
561.676.2601 mobile  
gfarriss@cresa.com  
BRE# 01939767

Interior Photos



For More Information

**Marc Bretter**

310.943.5141 direct  
310.351.0481 mobile  
mbretter@cresa.com  
BRE# 01819443

**Griffin Farriss**

213.430.2455 direct  
561.676.2601 mobile  
gfarriss@cresa.com  
BRE# 01939767