

WILLOWBROOK SQUARE

24174 HIGHWAY 27
LAKE WALES, FL 33859



2,775 SF



RETAIL FOR LEASE

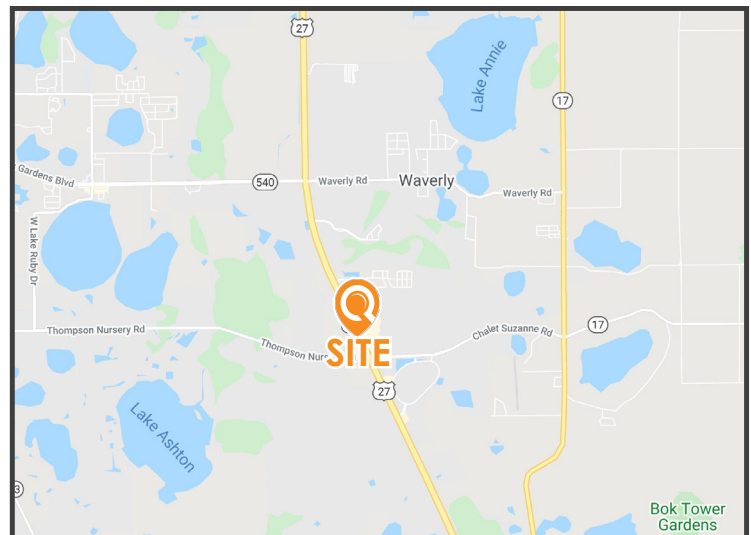


CALL FOR PRICE

PROPERTY INFORMATION

Lease Rate:	Call for Price
GLA:	12,705 SF
Space Available:	2,775 SF
Year Built:	2009
Highway 27 AADT:	40,000 CPD
Thompson Nursery Road AADT:	10,100 CPD

- Endcap available
- Excellent visibility at signalized intersection along Highway 27, just minutes from Publix, Walgreens, Home Depot, and Eagle Ridge Mall
- Located within five-miles of Downtown Lake Wales, where the city recently approved a 10-year redevelopment project that will include upgraded public areas and streets, the addition of trails and bike paths, and a new town square



DEMOGRAPHICS

	<u>1-MILE</u>	<u>3-MILES</u>	<u>5-MILES</u>
Total Population	1,363	16,147	52,044
Five-Year Increase	3.6%	3.2%	3.2%
Avg Household Income	\$43,337	\$60,926	\$61,584
Total Households	554	6,914	20,949
Employees	2,732	4,796	15,855

(Applied Geographic Solutions 2020)

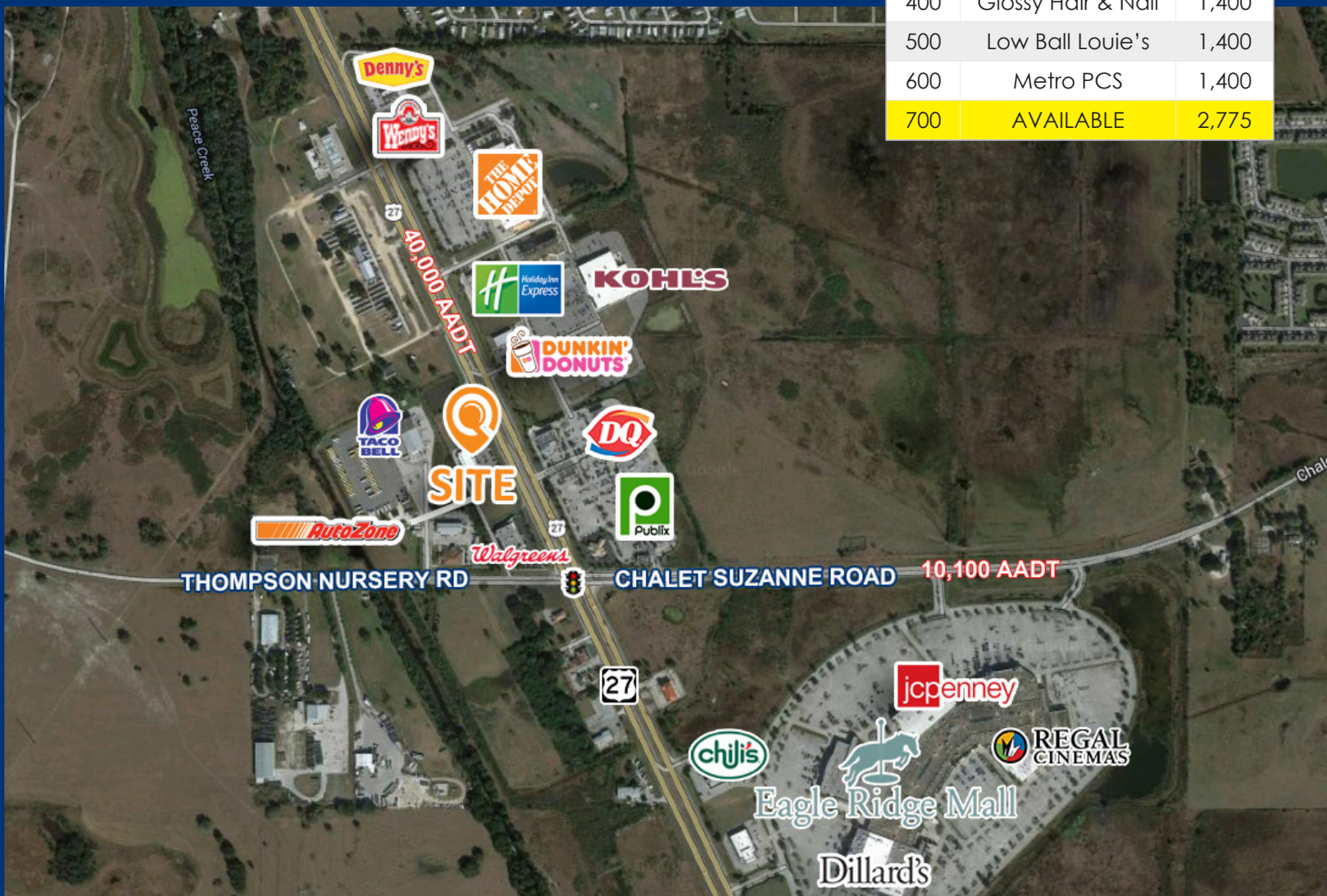
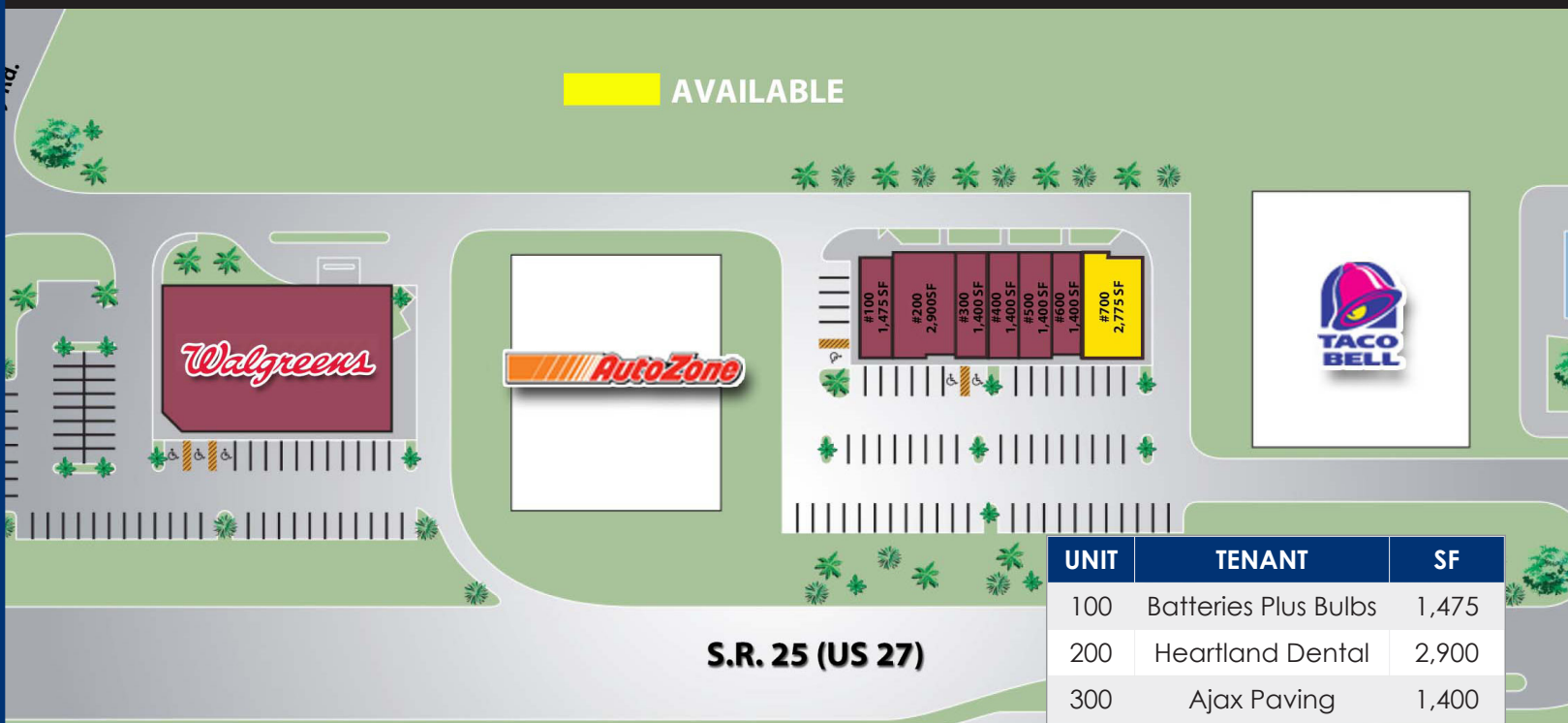
LQWEST.COM/WILLOWBROOK-SQUARE

JULIA SOSA, PRINCIPAL
D: 407.775.4358 @ M: 407.257.8246
jsosa@lqwest.com @ [MY LISTINGS](#)

EVA GRACE ROYAL, SR ASSOCIATE
D: 407.705.2217 @ M: 407.421.3532
eroyal@lqwest.com @ [MY LISTINGS](#)

LANDQWEST COMMERCIAL REAL ESTATE SERVICES @ 500 Winderley Place, SUITE 104, MAITLAND, FL 32751





500 Winderley Place, Suite 104, Maitland, FL 32751

MAIN: 407.660.7500 © FAX: 407.660.7600 © LQWEST.COM

Information obtained from owner(s) or other sources deemed reliable. We have no reason to doubt its accuracy, but cannot guarantee it. All properties subject to change or withdrawal without notice.