

451-455 EAST WILSON BRIDGE ROAD  
WORTHINGTON, OH 43085

## COMMERCIAL CORNER FOR LEASE



- 1,827 SF -up to- 5,039 SF Commercial/Retail space available in area with High Income, Strong Traffic Counts and many Planned Improvements.
- Highly Visible location at the intersection of East Wilson Bridge, Huntley & Worthington-Galena Roads.

### ASKING LEASE RATES:

- \* 1,827 SF @ \$1,408.00 per Month (\$9.25 SF) Net.
- \* 3,480 SF @ \$2,500.00 per Month (\$8.62 SF) Net.
- \* 5,039 SF @ \$3,360.00 per Month (\$8.00 SF) Net.

#### FOR MORE INFORMATION, PLEASE CONTACT:

**Bill Hamilton**

(614) 324-6715 - Office Direct

(614) 395-4098 - Cell

[BHamilton@C1Realty.com](mailto:BHamilton@C1Realty.com)

**Steve Holzer**

(614) 324-6718 - Office Direct

(614) 374-8231 - Cell

[SHolzer@C1Realty.com](mailto:SHolzer@C1Realty.com)

**Commercial One Realtors**

1515 Bethel Road

Columbus, Ohio 43220

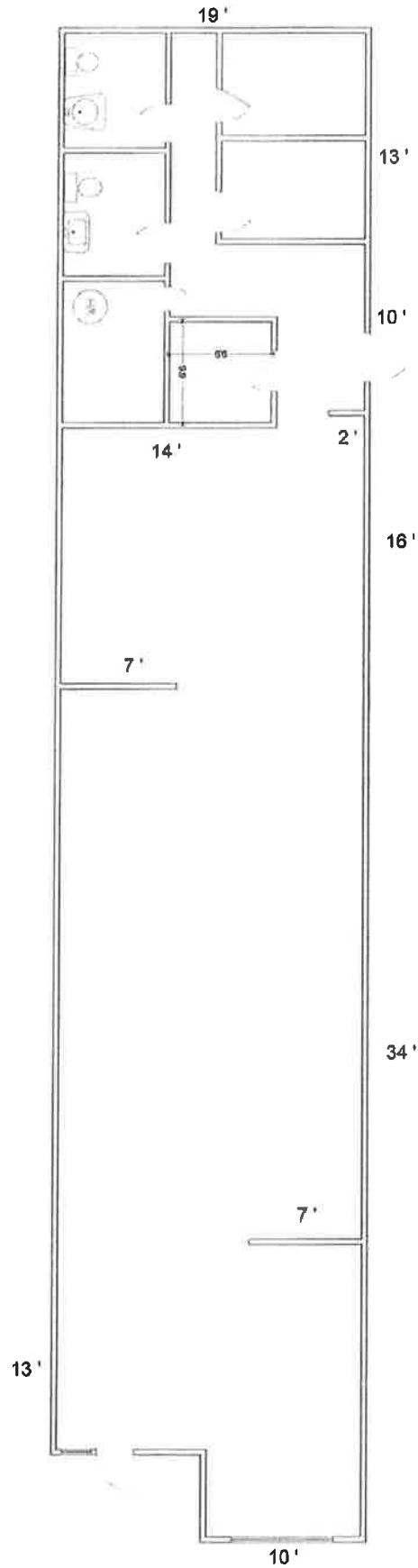
(614) 451-5100

[www.CommercialOneRealtors.com](http://www.CommercialOneRealtors.com)

No warranty or representation, express or implied, is made as to the accuracy of the information contained herein, and same is submitted subject to errors, omissions, change of price, rental or other conditions, withdrawal without notice, and to any special listing conditions, imposed by our principals.



Est. 1912  
**Commercial  
•ONE•  
REALTORS**



451 WILSON BRIDGE ROAD  
1,827 Square Feet



451 EAST WILSON BRIDGE ROAD  
WORTHINGTON, OH 43085

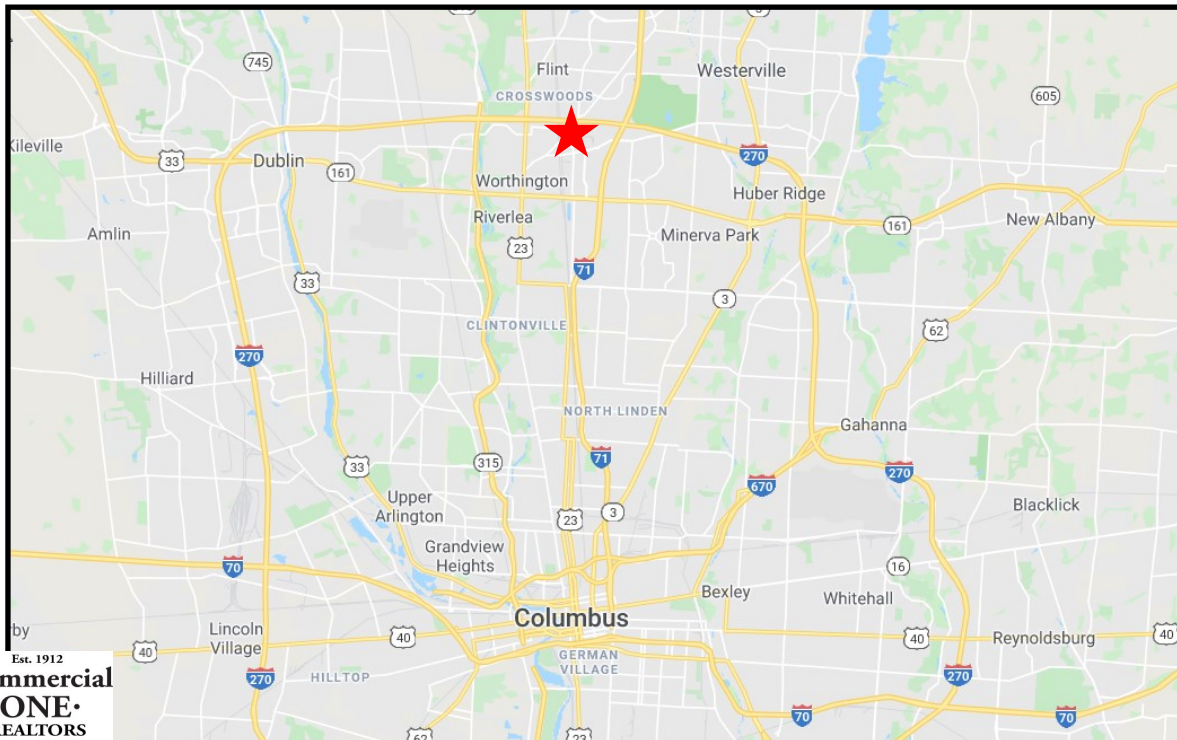
## RETAIL CORNER FOR LEASE



No warranty or representation, express or implied, is made as to the accuracy of the information contained herein, and same is submitted subject to errors, omissions, change of price, rental or other conditions, withdrawal without notice, and to any special listing conditions, imposed by our principals.



# RETAIL CORNER FOR LEASE



No warranty or representation, express or implied, is made as to the accuracy of the information contained herein, and same is submitted subject to errors, omissions, change of price, rental or other conditions, withdrawal without notice, and to any special listing conditions, imposed by our principals.