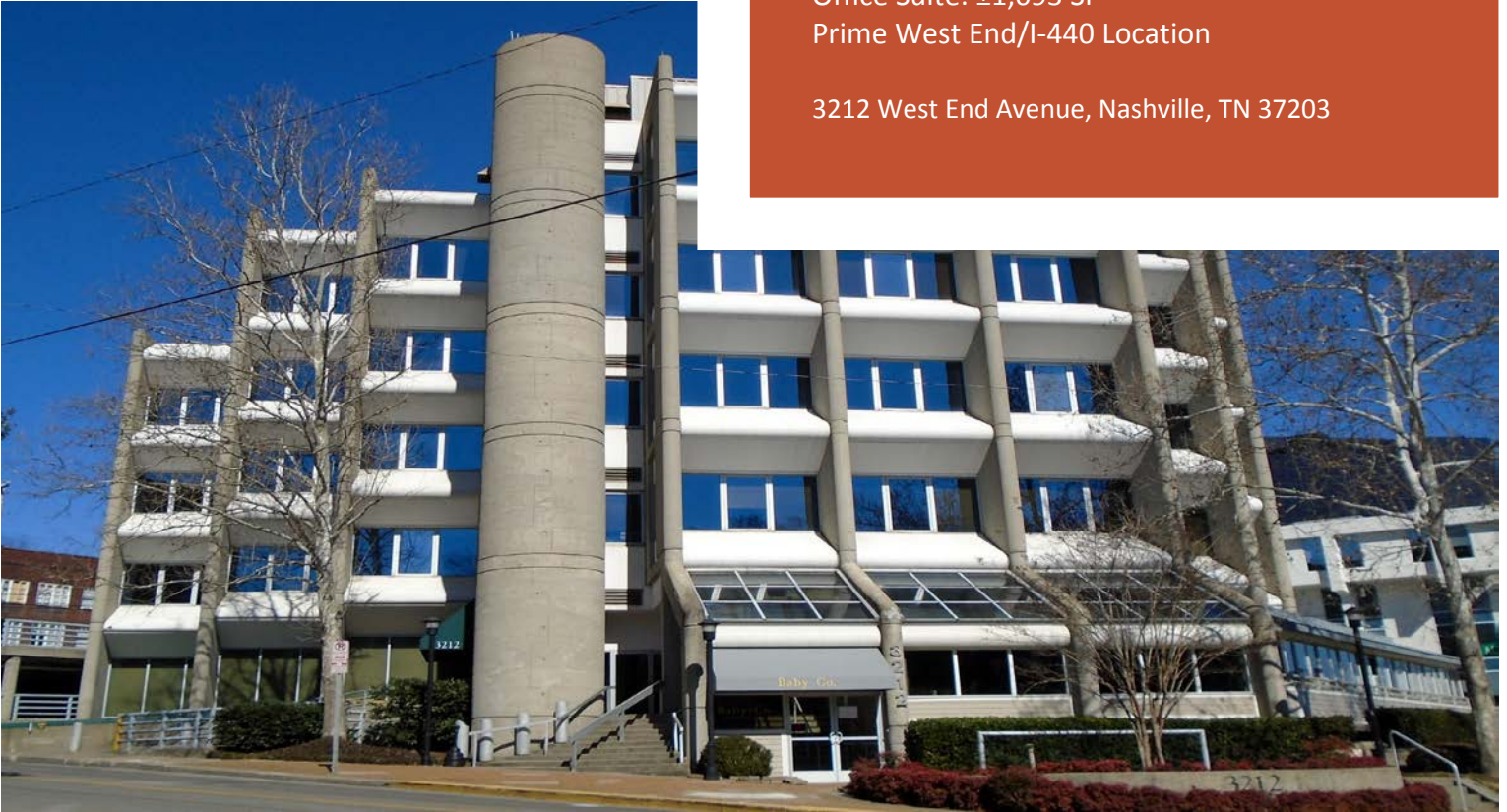


# SUBLEASE

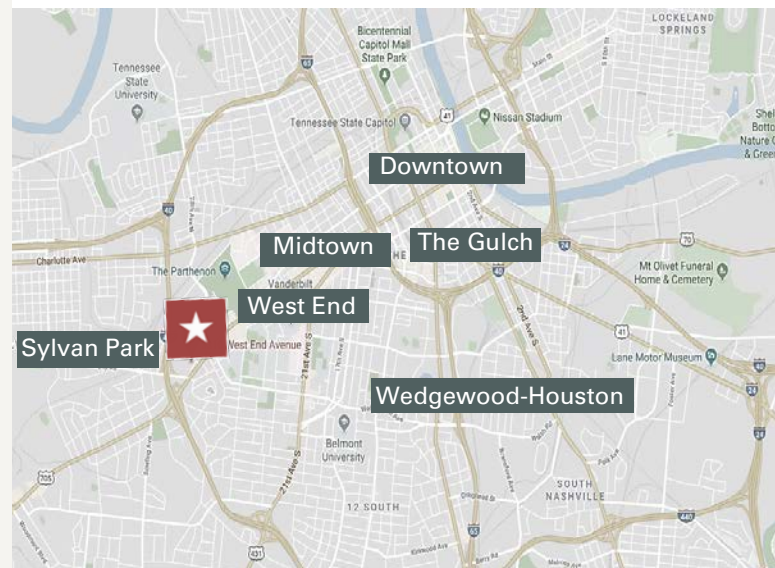
Office Suite: ±1,093 SF  
Prime West End/I-440 Location

3212 West End Avenue, Nashville, TN 37203



## HIGHLIGHTS

- Suite 401: ±1,093 SF (Sublease)
- Lease Rate: \$26/ SF FSG
- Term expires: 7/31/2020
- Accessed by way of a signalized intersection
- Westpark Building in the heart of West End
- 



**Kim Camp Madison**  
Vice President  
O: 615.345.7226  
kmadison@charleshawkinsco.com

**R. Stephen Prather**  
Senior Vice President  
O: 615.345.7254  
sprather@charleshawkinsco.com

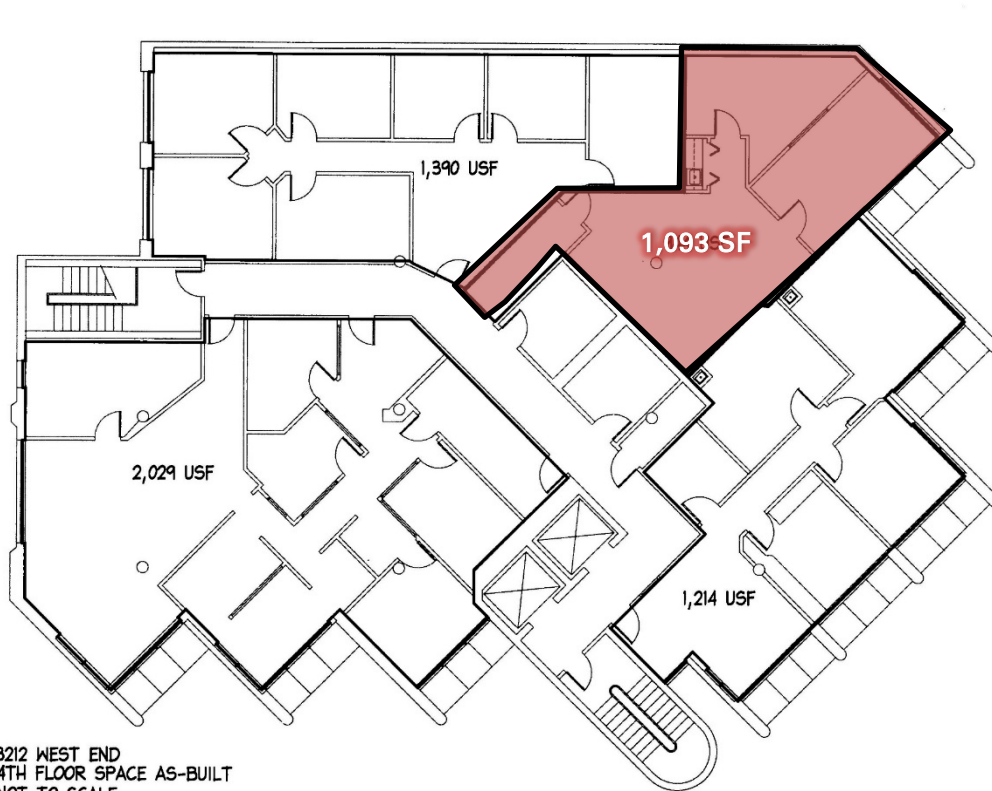
Exclusively listed by:  
Charles Hawkins Co. / CORFAC International  
760 Melrose Avenue  
Nashville, TN 37221  
T: 615.256.3189 / F: 615.254.4026

Sublease  
 ±1,093 SF Available  
 Office Space

3212 West End Avenue  
 Nashville, TN 37203  
 Davidson County

CHARLES  
 HAWKINS CO.

FLOOR PLAN / AERIAL



3212 WEST END  
 4TH FLOOR SPACE AS-BUILT  
 NOT TO SCALE

DISTANCES		
Downtown	2.8 Miles	
The Gulch	2.6 Miles	
Midtown	1.5 Miles	
Music Row	1.8 Miles	
Vanderbilt	0.6 Miles	
Belmont	1.5 Miles	
Germantown	3.6 Miles	

NEARBY:

**Kim Camp Madison**  
 Vice President  
 O: 615.345.7226  
 kmadison@charleshawkinsco.com

**R. Stephen Prather**  
 Senior Vice President  
 O: 615.345.7254  
 sprather@charleshawkinsco.com

Exclusively listed by:  
 Charles Hawkins Co. / CORFAC International  
 760 Melrose Avenue  
 Nashville, TN 37221  
 T: 615.256.3189 / F: 615.254.4026

Sublease  
±1,093 SF Available  
Office Space

3212 West End Avenue  
Nashville, TN 37203  
Davidson County

CHARLES  
HAWKINS CO.

## PHOTOS

GREAT VIEWS OF MIDTOWN/DOWNTOWN



**Kim Camp Madison**  
Vice President  
O: 615.345.7226  
kmadison@charleshawkinsco.com

**R. Stephen Prather**  
Senior Vice President  
O: 615.345.7254  
sprather@charleshawkinsco.com

Exclusively listed by:  
Charles Hawkins Co. / CORFAC International  
760 Melrose Avenue  
Nashville, TN 37221  
T: 615.256.3189 / F: 615.254.4026