

5.58± APPROVED FOR NEW CAR DEALERSHIP



15600 TAMiami TRAIL
FORT MYERS, FL 33908



5.58± ACRES

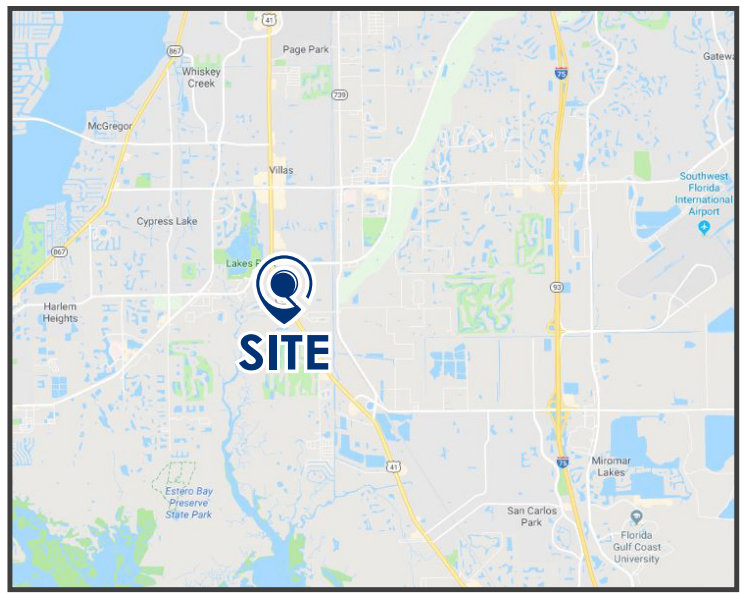
LAND FOR SALE

**\$3,159,842 OR
\$13.00 PSF**

PROPERTY INFORMATION

Sale Price: \$3,159,842 or \$13.00 PSF
County: Lee County
Land Size (AC): 5.58± AC
Zoning: CPD (Commercial Development)
US-41 AADT: 59,500 CPD
Six Mile Cypress Parkway AADT: 36,500 CPD

- 466± feet of US-41 frontage
- Approved for new car dealership.
- Lighted intersection on a high traffic main thoroughfare
- Commercially zoned, join retailers like Walmart, Costco, Lowes, McDonald's and many more!



LQWEST.COM/US-41-ACERAGE

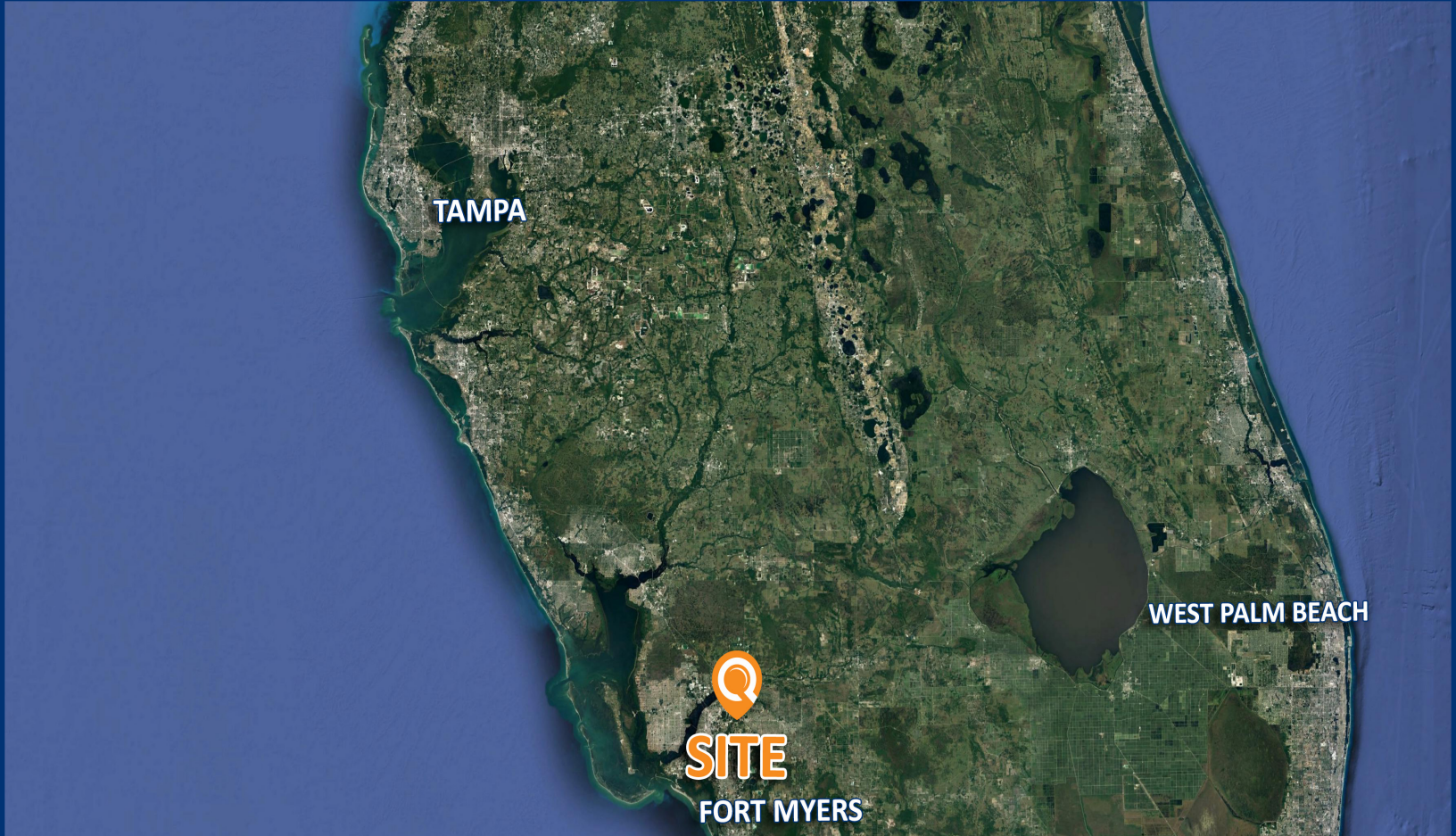
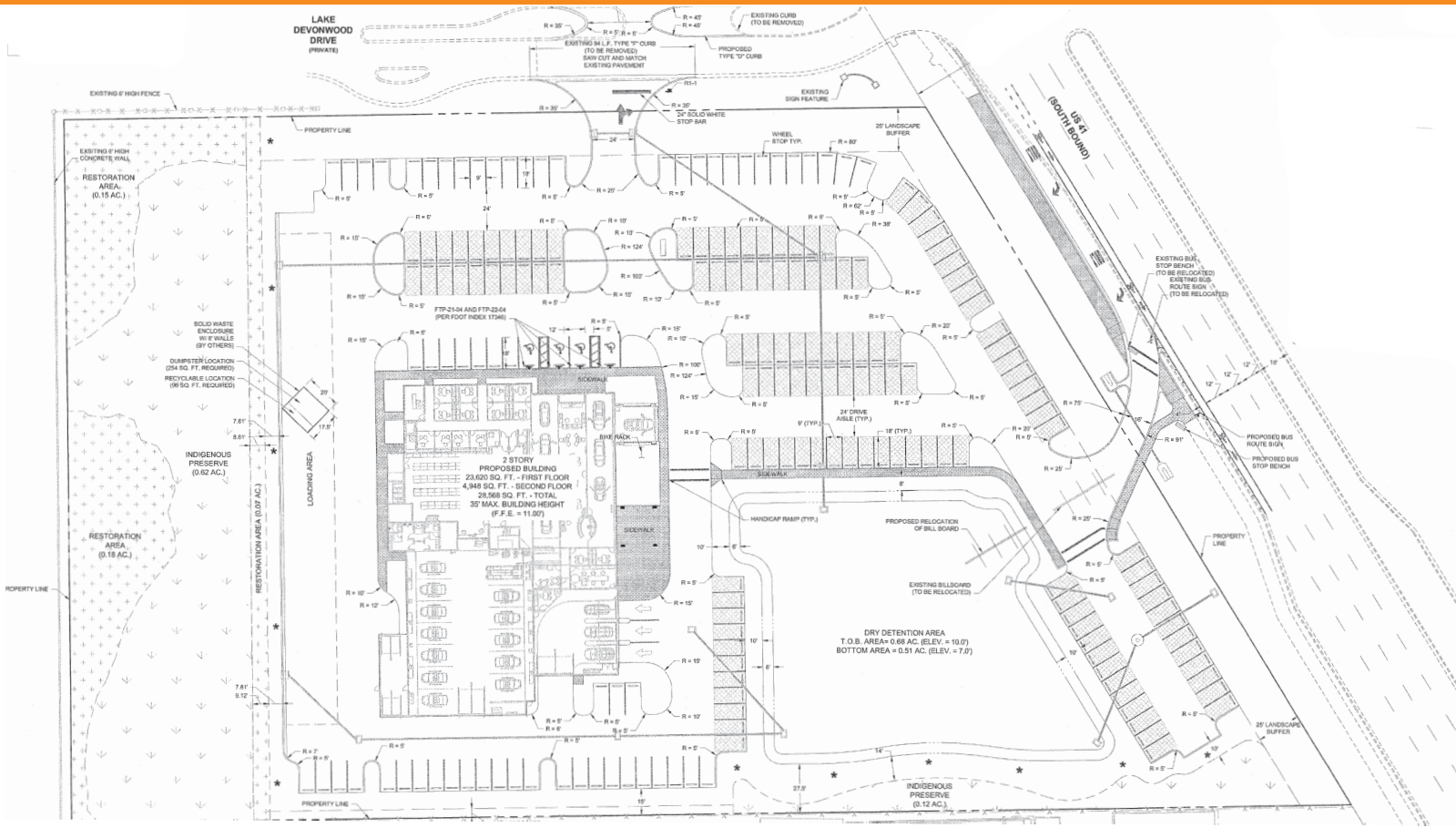
DEMOGRAPHICS

	<u>1-MILE</u>	<u>3-MILES</u>	<u>5-MILES</u>
Total Population	5,284	43,124	123,406
Five-Year Increase	1.9%	2.0%	1.9%
Avg Household Inc.	\$59,676	\$80,538	\$74,065
Total Households	2,816	21,536	56,577
Daytime Employees	2,822	34,948	73,982

(Applied Geographic Solutions 2018)

MICHAEL PRICE ALC @ LAND DIVISION DIRECTOR
 LandQwest Commercial Real Estate Services
 1614 Colonial Boulevard, Suite 101, Fort Myers, FL 33907
 D: 239.333.4372 @ C: 239.223.2412 @ mprice@lqwest.com





1614 Colonial Boulevard #101, Fort Myers, FL 33907

DIRECT: 239.333.4372 © CELL: 239.223.2412 © LQWEST.COM

Information obtained from owner(s) or other sources deemed reliable. We have no reason to doubt its accuracy, but cannot guarantee it. Prospective purchasers should conduct their own independent investigations, by their own experts, at their own expense. This property is subject to change or withdraw without notice.