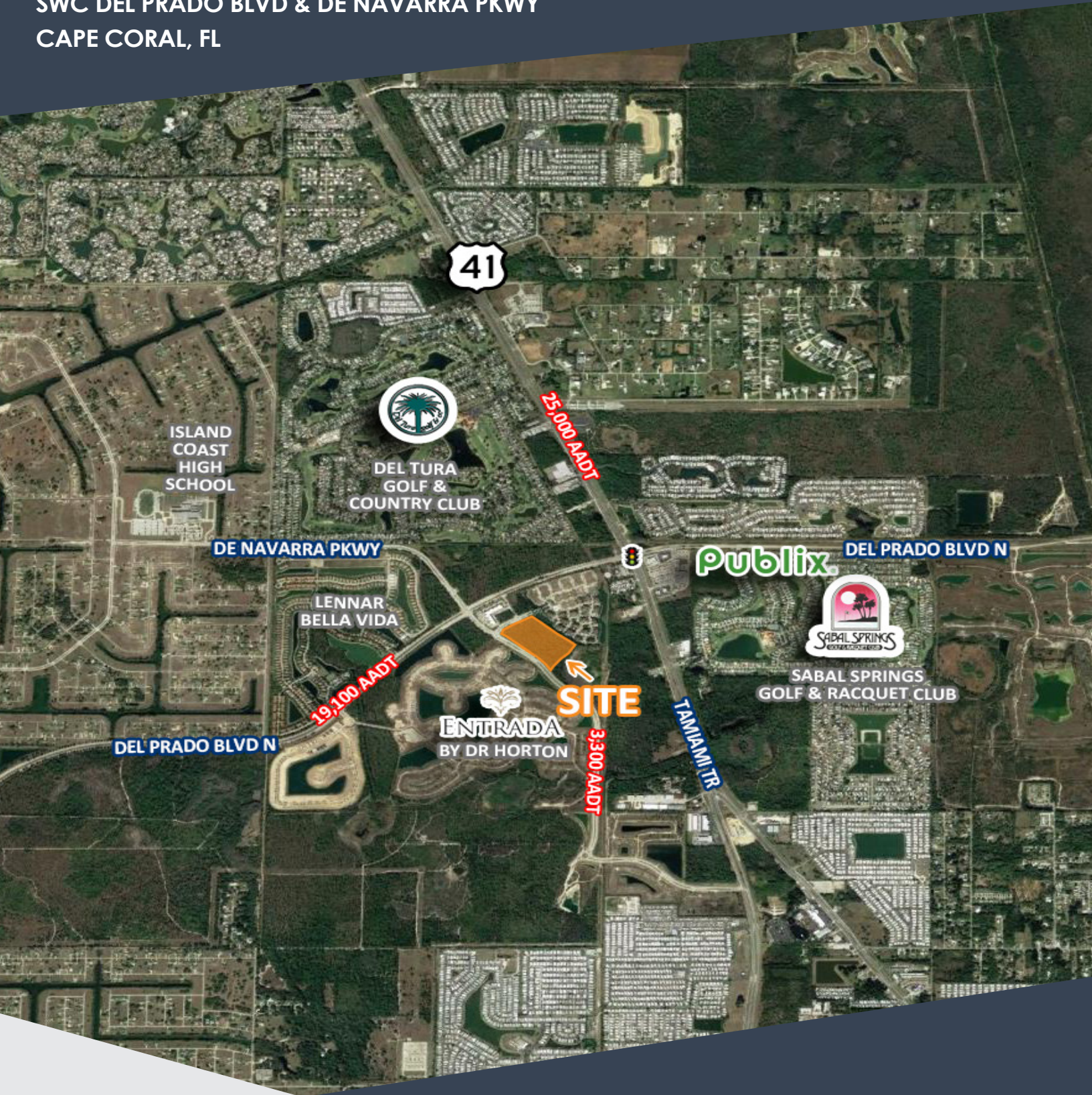


ENTRADA MULTI-FAMILY LAND

15.14± AC WITH ENTITLEMENTS
FOR UP TO 240 MF UNITS

SWC DEL PRADO BLVD & DE NAVARRA PKWY
CAPE CORAL, FL



MICHAEL PRICE ALC
DIRECTOR, LAND DIVISION
239-333-4372
mprice@lqwest.com



TAMPA | ORLANDO | FT MYERS | NAPLES

CAPE CORAL

ESTIMATED POPULATION

2018 189,343

2017 183,442

↑
3.21%

ESTIMATED MEDIAN HH INCOME

\$53,653*

*Source: census.gov

Southwest Florida makes up approximately 16.6% of the total 20 million Floridians, with 1.2 million residents in Lee, Collier, Charlotte, Sarasota, Glades and Hendry counties. This rate is growing by 1,000 per month. It's most populous county, Lee (756,115 residents), is the region's largest In Southwest Florida.

The Southwest Florida populous is connected by the U.S. Highway 41 (also known as Tamiami Trail) and the Interstate-75 corridor, both to the north and south. A new I-75 connector road to the Southwest Florida International Airport and surrounding areas was completed 2014 for expedited convenience.

The Southwest Florida International Airport is the second busiest single-runway airport in the United States. Approximately 8.6 million people travelled in and out of "RSW" in 2016. Fourteen carriers offer 46 non-stop flights to domestic and international destinations. The airport has plans for a new \$47 million new tower and a second runway that will start 2020.

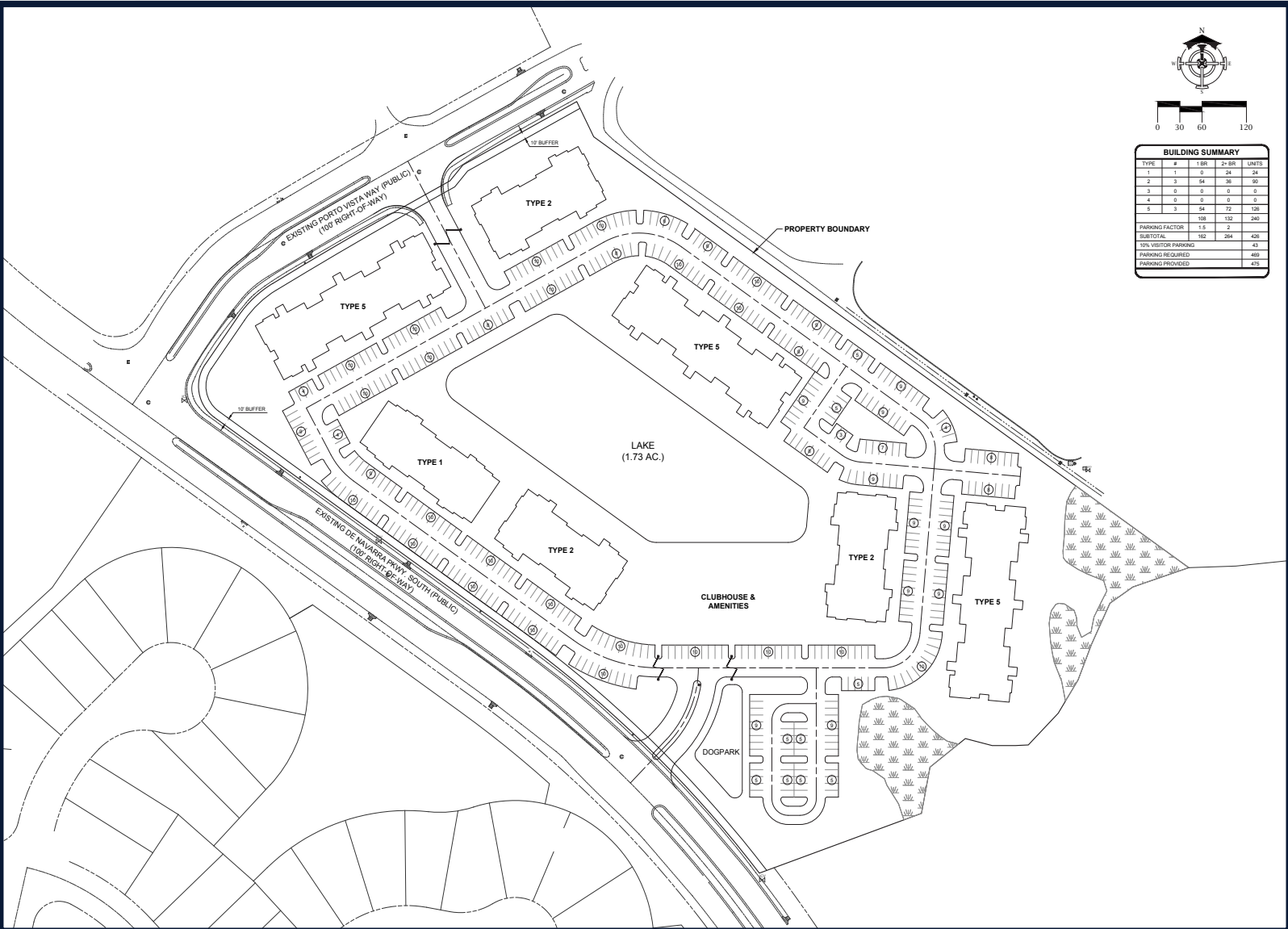


ABOUT

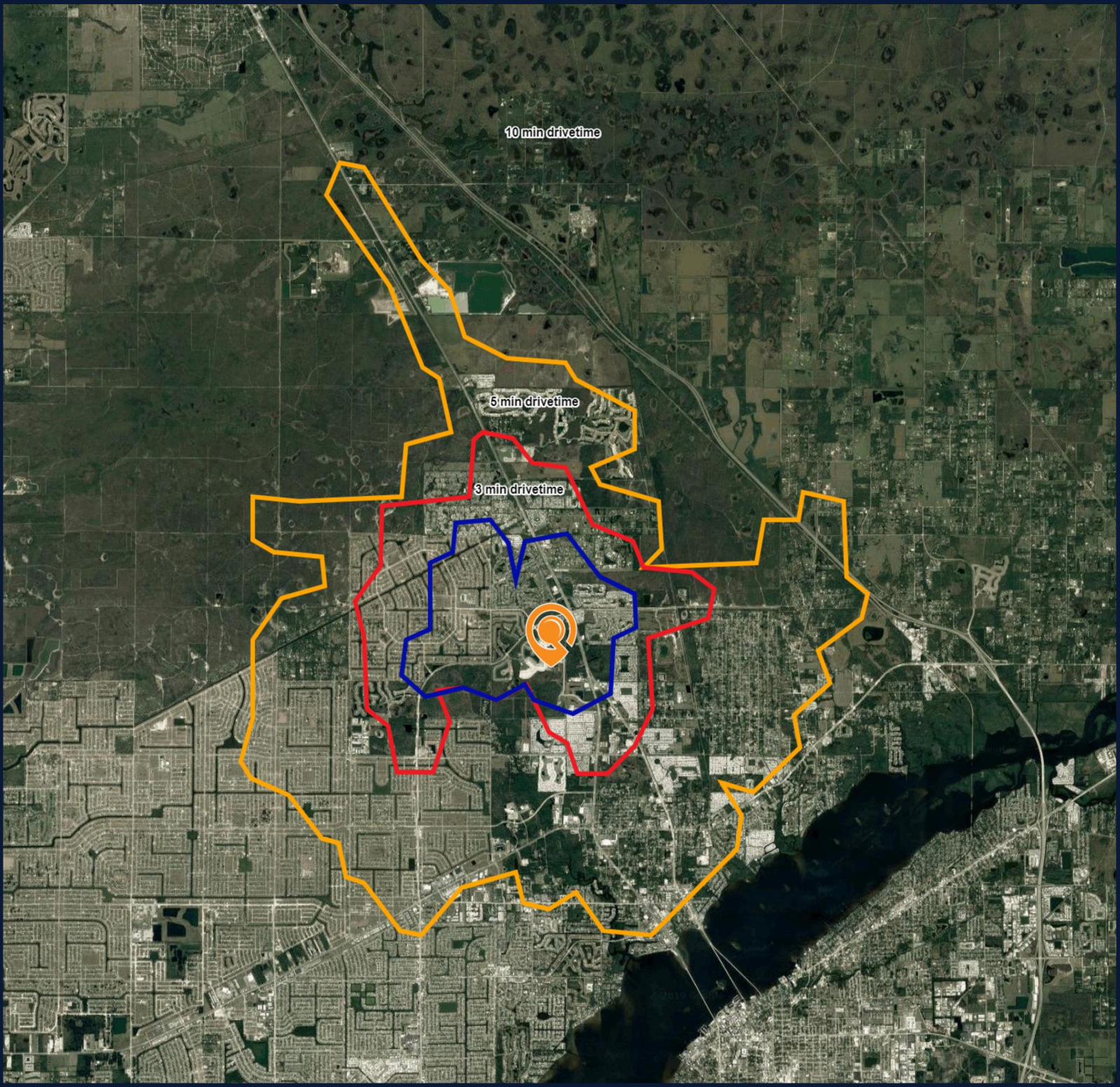
PRICE:	\$3,500,000
SIZE:	15.14 ± Acres
UNITS:	Up to 240 Units
ENTITLEMENTS:	See Link Attached
SFWMD ERP:	ERP #: 36-05074-P
ZONING:	RML (Residential MF Low/16 du-ac) in place August 2019
UTILITIES:	Water (City of CC) Sewer (City of CC/FGUA)

CIVIL ENGINEER:	Delisi Fitzgerald
CONSULTANT LIST:	Available Upon Request
DETAILED FILES:	Available Upon Request NDA Required

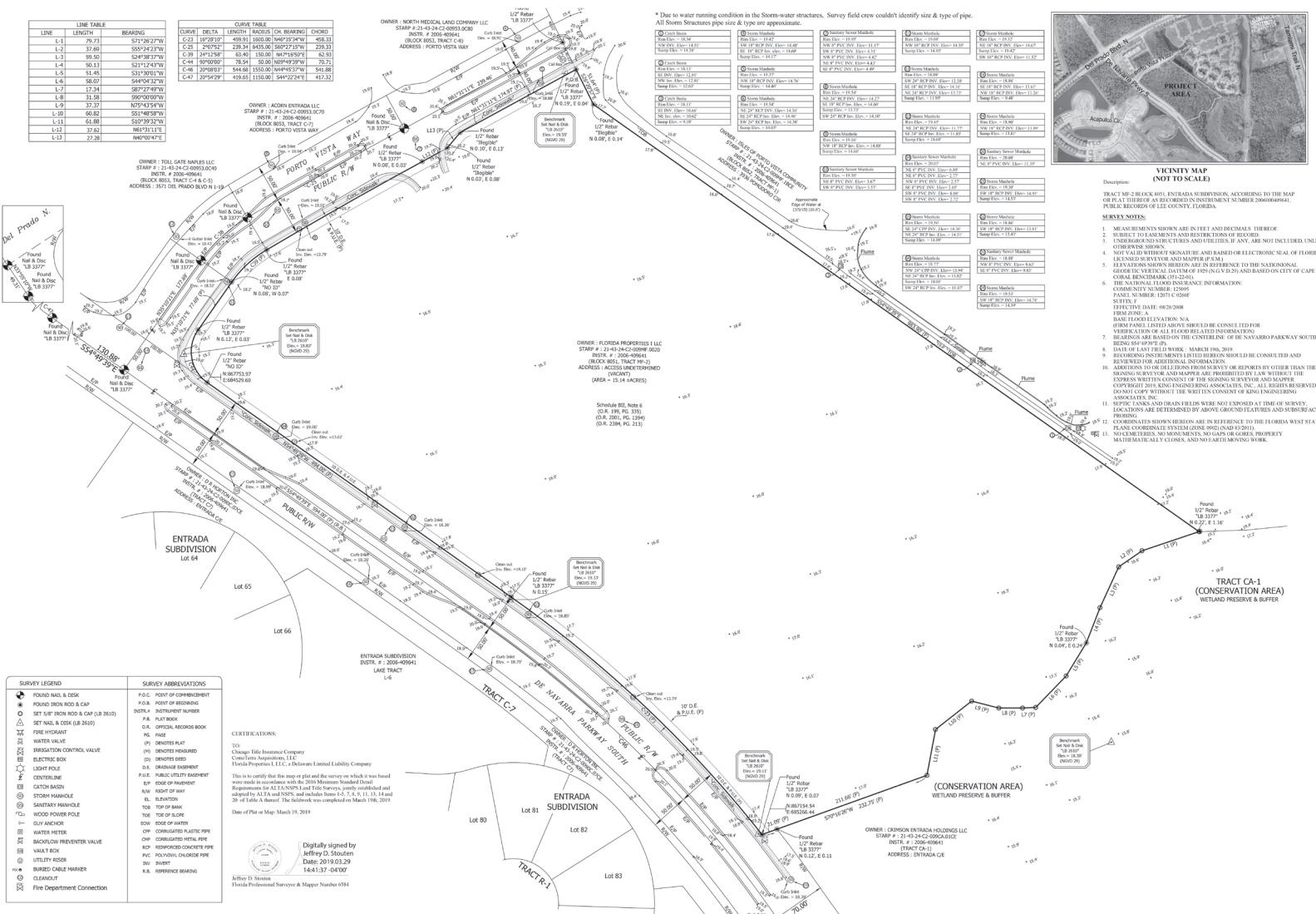
For project files please click [here](#).



DRIVE TIME



SURVEY



TAMPA



4300 W. Cypress St #350
Tampa, FL 33607
(813) 288-0020

ORLANDO



423 S. Keller Rd #400
Orlando, FL 32810
(407) 660-7500

FORT MYERS



1614 Colonial Blvd #101
Fort Myers, FL 33907
(239) 275-4922

NAPLES



3555 Kraft Road, #260
Naples, FL 34105
(239) 275-4922

MICHAEL PRICE ALC
DIRECTOR, LAND DIVISION
239-333-4372
mprice@lqwest.com

1614 Colonial Boulevard #101
Fort Myers, FL 33907