



# Sublease Available

**Intech Park**  
**6625 Network Way,**  
**Ste 300**  
**Indianapolis, IN**

## Space Profile

<b>RSF</b>	12,200 RSF
<b>Rental Rate</b>	\$14.00 MG
<b>Availability</b>	Immediate
<b>Term</b>	Exp 3/10/2024
<b>Built</b>	2000

## Layout

Office: 9,956 SF;  
Warehouse: 2,244 SF

## Parking

4.5 / 1,000 SF

## Expansion

Available through Landlord

## Features

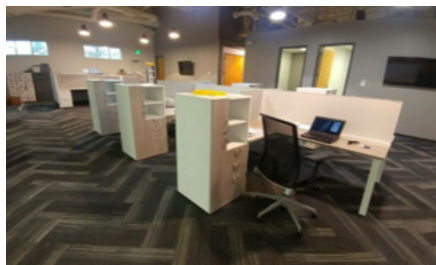
- Great glass line, abundant light
- Amenity rich location
- High-end finishes
- Contemporary space, great for tech companies
- Collaborative space
- Adjacent space available through landlord

## For More Information

**Cresa**  
8935 N Meridian Street  
Suite 103  
Indianapolis, IN 46260  
[cresa.com/indianapolis](http://cresa.com/indianapolis)

**Tim O'Brien**  
317.590.1033  
[tobrien@cresa.com](mailto:tobrien@cresa.com)

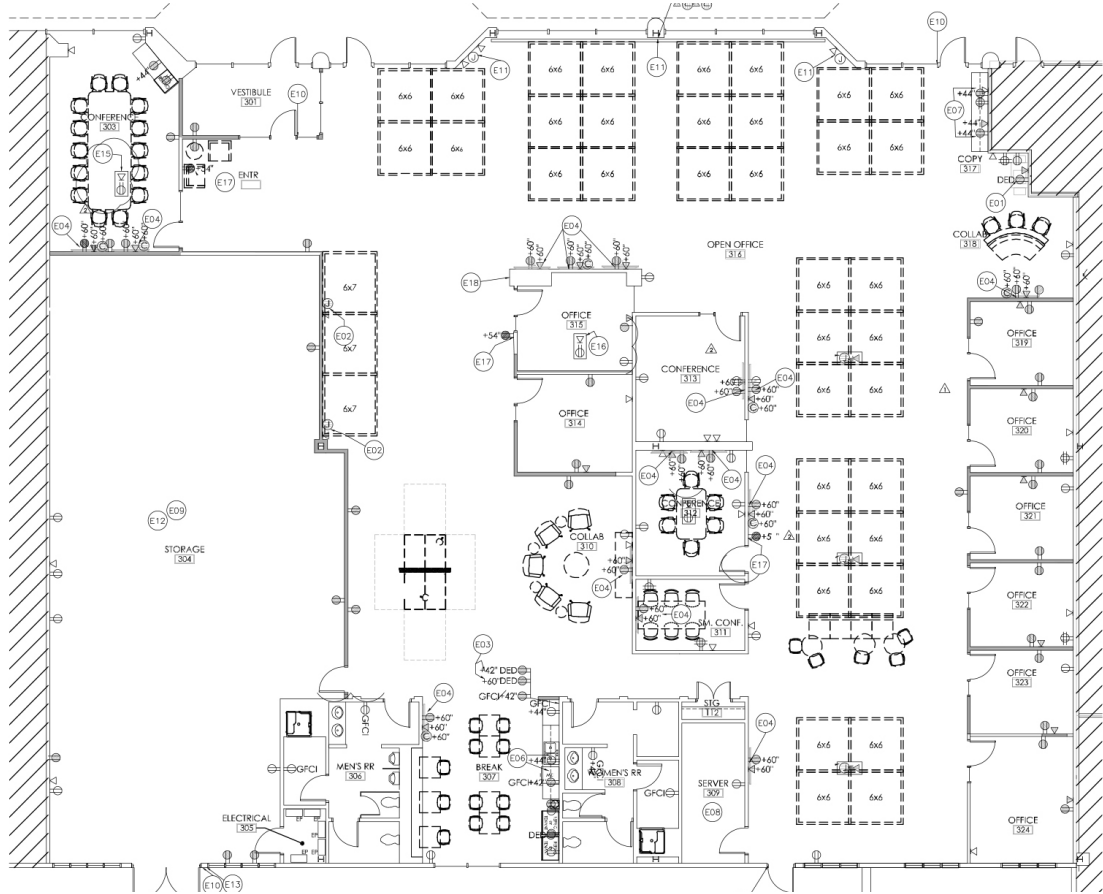
**Leslie Teskey**  
317.695.6925  
[lteskey@cresa.com](mailto:lteskey@cresa.com)





**Intech Park**  
**6625 Network Way,**  
**Ste 300**  
**Indianapolis, IN**

**Floorplan**  
**12,200 RSF**



**Interior Photos**



Even though obtained from sources deemed reliable, no warranty or representation, express or implied, is made as to the accuracy of the information herein, and it is subject to errors, omissions, change of price, rental or other conditions, withdrawal without notice, and to any special listing conditions imposed by our principals.

