



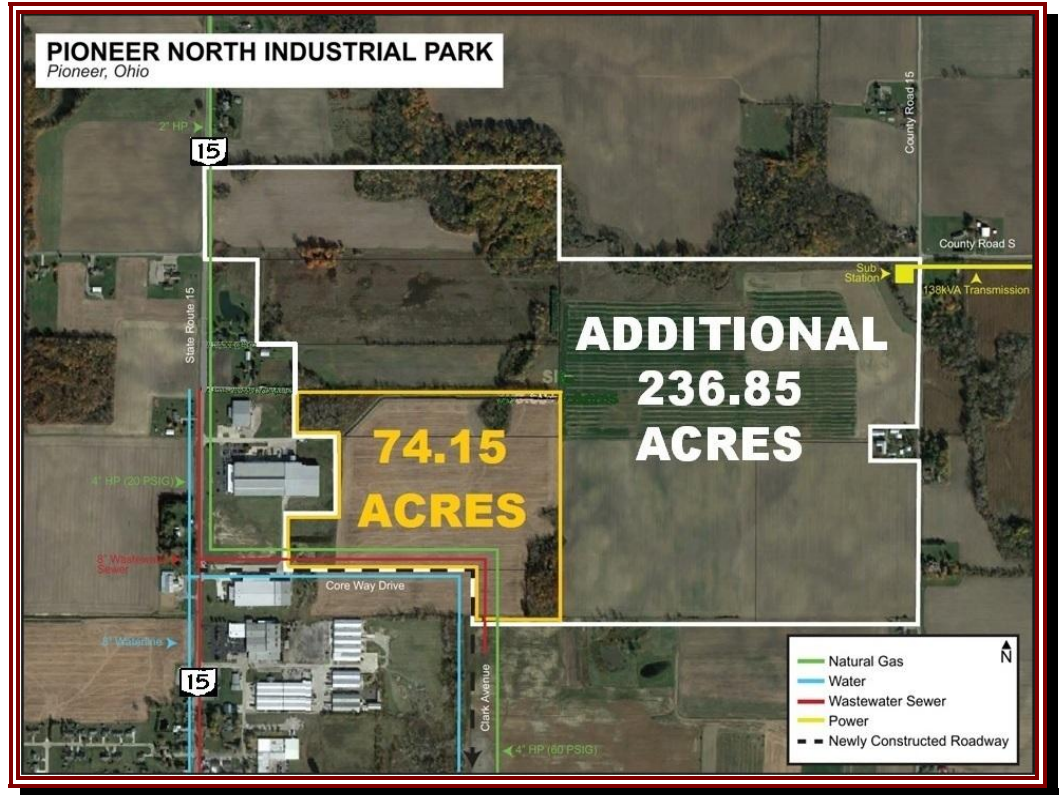
Heavy Industrial Land

0 Kexon Drive
Pioneer, Ohio 43554

Available:
5- 74.15 Acres
(Divisible)

For Sale:
\$20,000/Acre
(5+ Acres)

\$25,000/Acre
(Less than 5 Acres)



For information, contact:



Tim Echemann, SIOR, CCIM

937.492.4423

techemann@IPBIndustrial.com
www.IPBIndustrial.com



Ron Jurgenson, SIOR, CCIM

419.794.3959

RJurgenson@rkgcommercial.com
www.rkgcommercial.com

Land: 74.15 Acres
Parcel Number: 092-160-01-004.001,
092-160-01-007.000,
092-160-01-005.000 &
092-160-01-005.001
Annual Taxes: \$2,365.39
Township: Pioneer
Zoning: M-2; Heavy Industrial

Highlights:

- All Utilities
- Tax Abatement
- Redundant Power Service w/
Competitive Rates
- Additional 236.85 Acres Available

Location:

Williams County is located in the far northwest corner of Ohio and borders both Michigan and Indiana. The Ohio Turnpike and the rail system provide high-speed transportation and economic development options with easy access to major cities, and global operations.

Transportation:

Williams County has quick access to OH turnpike Exit 2 and 13, Interstate 80 & 90, and is approximately 45 minutes from OH Turnpike Exit 64, I-75 Exit 195, and only 25 minutes from IN Turnpike Exit 144, I-69 Exit 156.