

FOR SALE

±2 Acres

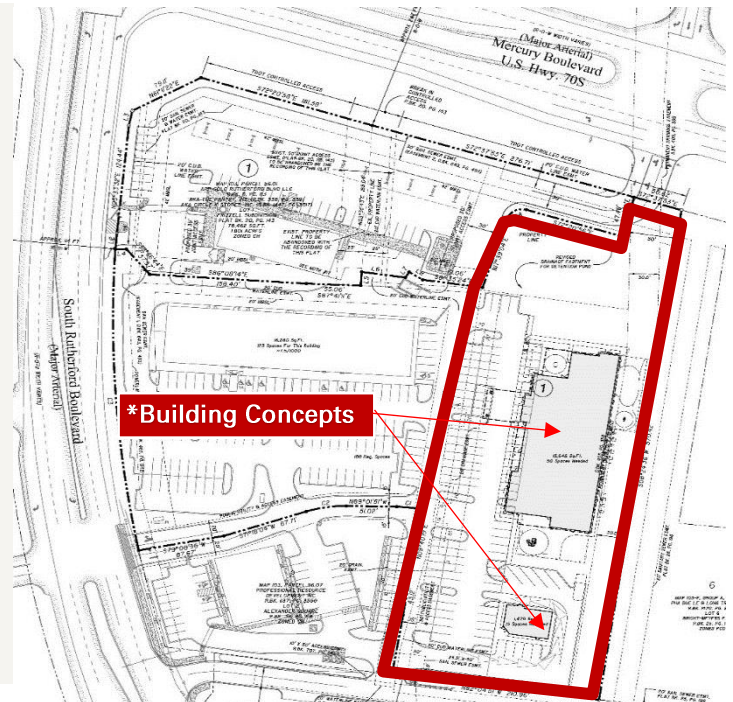
Outparcels Available Next to the Alexander Square Shopping Center in Murfreesboro, TN

2962 South Rutherford Blvd, Murfreesboro, TN 37130



HIGHLIGHTS

- ± 2 Acres (Divisible)
- \$799,000.00 (\$399,500 per Acre)
- Zoned CH (Commercial Highway)
- Access from S. Rutherford Blvd or Mercury Blvd



Paul M. Myers, MPRE
Vice President
C: 615.398.4848
pmyers@charleshawkinsco.com

Exclusively listed by:
Charles Hawkins Co. / CORFAC International
760 Melrose Avenue
Nashville, TN 37221
T: 615.256.3189 / F: 615.254.4026