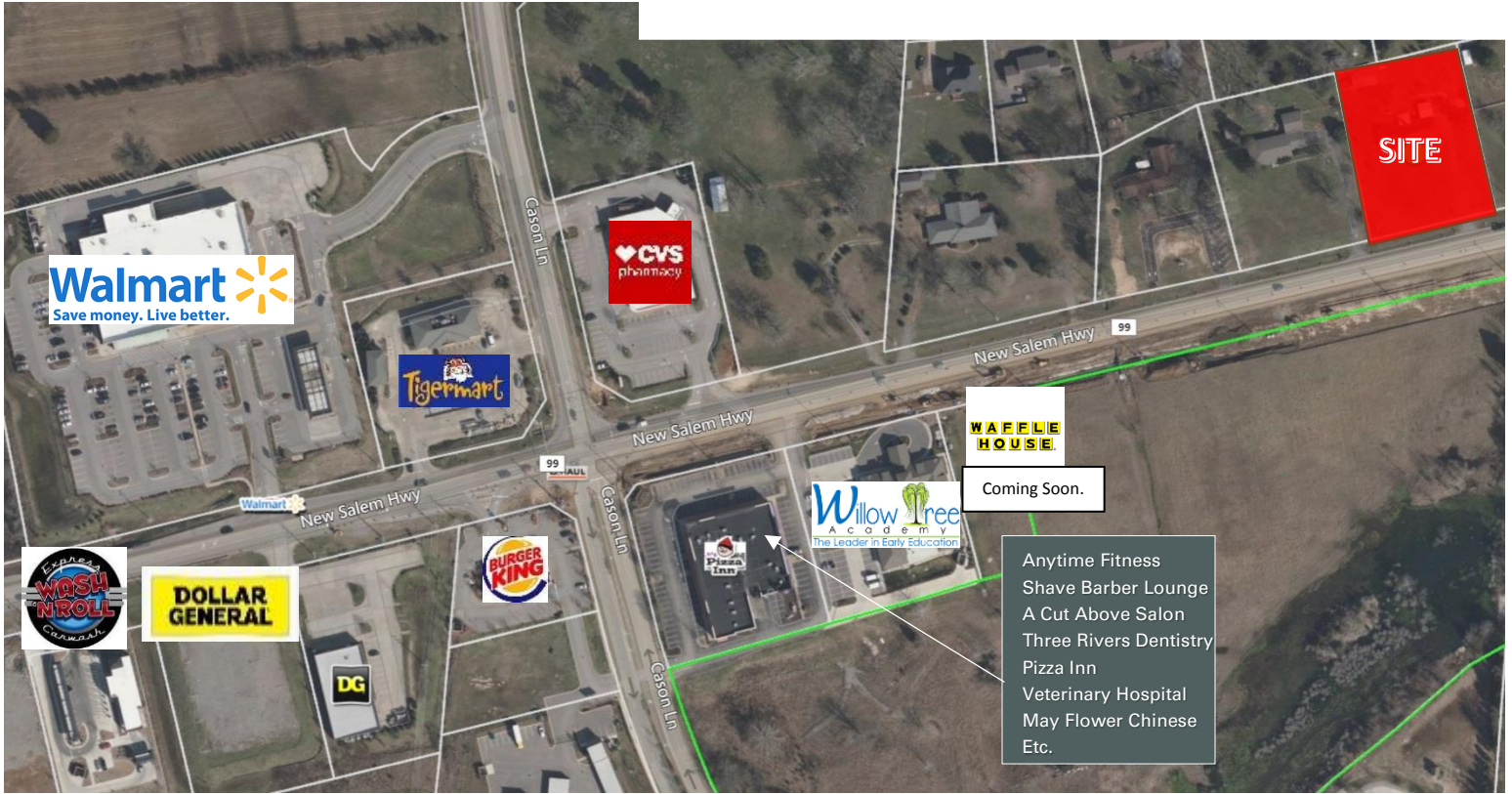


FOR LEASE

Prime Office Location with Shop or Storage
2,366 SF Office with +/-864 SF Shop on ±1.2 Acres

195' of Frontage on 5 Lane Hwy (Under Construction)

2348 New Salem Highway, Murfreesboro, TN 37128



HIGHLIGHTS

- \$4,200.00 per month MG
- Stand-alone Location on 5 lane Highway
- Prime Retail/ Office Corridor
- Traffic Count: Over 30,000 Cars per Day
- ±195 Linear Feet of Frontage
- Zoning: Commercial Neighborhood (CN)
- Office: 2,366 SF
- Metal Shop/ Storage Building: ±864 SF
- ±1.7 miles (4 minutes) to I-24



Paul M. Myers, MPRE
Senior Vice President
C: 615.598.4848
pmyers@charleshawkinsco.com

Exclusively listed by:
Charles Hawkins Co.
760 Melrose Avenue
Nashville, TN 37211

T: 615.256.3189 / F: 615.254.4026

For Sale
±1.10 Acres

2348 New Salem Hwy
Murfreesboro, TN 37128
Rutherford County

CHARLES
HAWKINS CO.

PHOTOS / AERIAL

New 5-Lane Highway Under Construction



Paul M. Myers, MPRE
Vice President
C: 615.598.4848
pmyers@charleshawkinsco.com

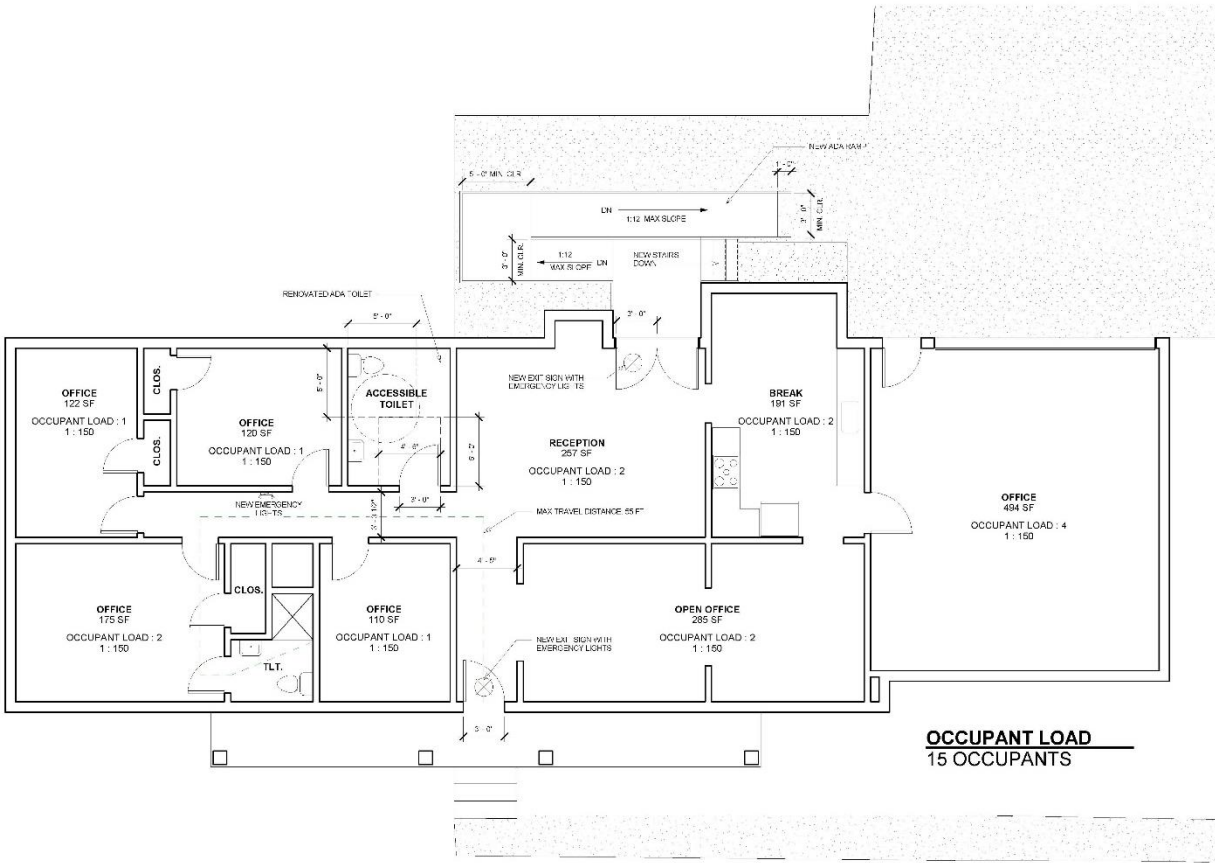
Exclusively listed by:
Charles Hawkins Co.
760 Melrose Avenue
Nashville, TN 37211
T: 615.256.3189 / F: 615.254.4026

For Sale
±1.10 Acres

2348 New Salem Hwy
Murfreesboro, TN 37128
Rutherford County

CHARLES
HAWKINS CO.

FLOOR PLAN



OCCUPANT LOAD
15 OCCUPANTS

1 FLOOR PLAN
1/4" = 1'-0"

Paul M. Myers, MPRE
Vice President
C: 615.598.4848
pmyers@charleshawkinsco.com

Exclusively listed by:
Charles Hawkins Co.
760 Melrose Avenue
Nashville, TN 37211
T: 615.256.3189 / F: 615.254.4026