
FOR SALE OR LEASE

Rolling Green Business Center Office Condominiums
833 Meander Court, #109 and #209
MEDINA, MN 55340



Offered Exclusively By:
Rich Yablonsky, CCIM, SIOR
(763) 231-0282 Phone
(763) 231-0284 Fax
(612) 419-7766 Cellular
yablo@yablo.net



Specification Sheet

Rolling Green Business Center Office Condominiums
833 Meander Court, #109 and #209
Medina, MN 55340

BUILDING SIZE:	9,842 Square Feet
TOTAL AVAILABLE:	3,072 Square Feet
	Main floor- 1,536 sq. ft.
	Lower level- 1,536 sq. ft.
YEAR BUILT:	2006
ZONING:	PUD (Planned Unit Development)
ASKING PRICE:	\$425,000 (\$138.35 psf)
REAL ESTATE TAXES (2021 est.):	\$7,825.84
LEASE RATE:	\$16.00 per square foot gross
MONTHLY ASSOCIATION FEES (2021):	\$ 535.68

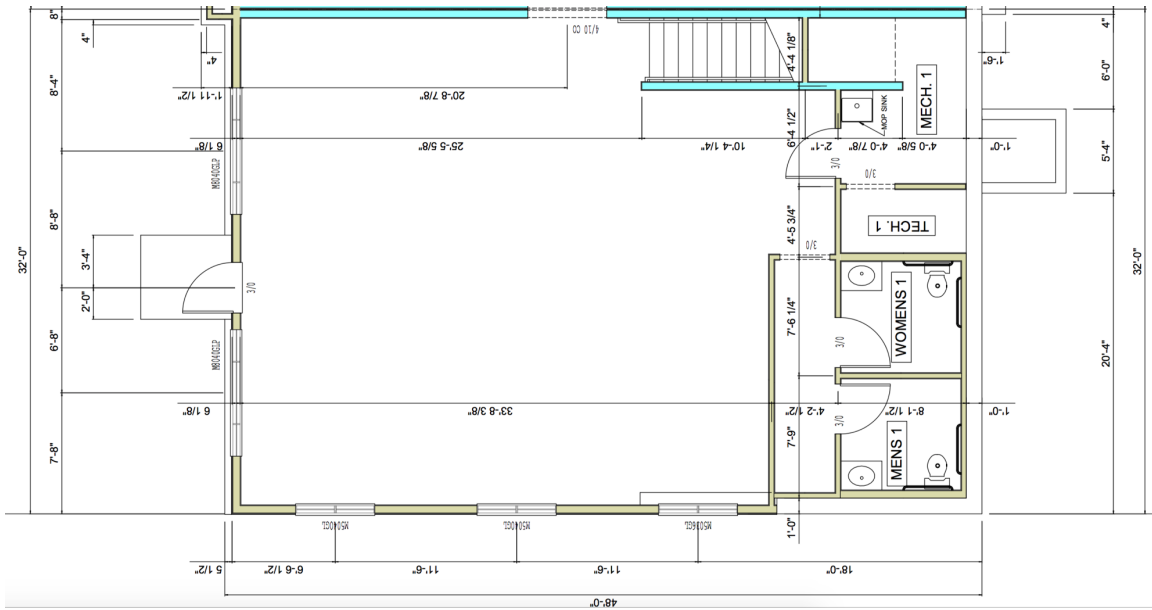
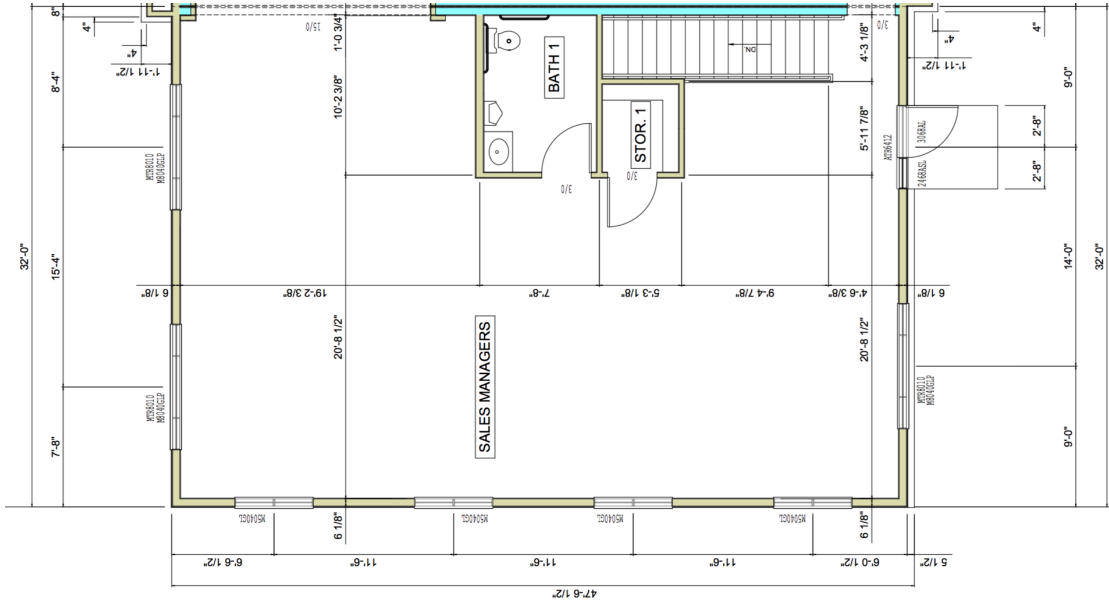
ADDITIONAL COMMENTS:

- Great location off Highway 55 and Cty 116 (Pinto Drive)
- Just minutes west of I-494 next to Medina Country Club
- Class A office finish
- Private offices, conference room, kitchenette, private restrooms, shower
- Naturesque setting with walking paths

Please call for more information:

Rich Yablonsky, CCIM, SIOR
(763) 231-0282

Floor Plans



All information is from sources judged to be reliable. However, no warranty or representation is made as to its accuracy. Prospective purchasers should conduct their own due diligence to investigate the suitability of this property as an investment.

Pics

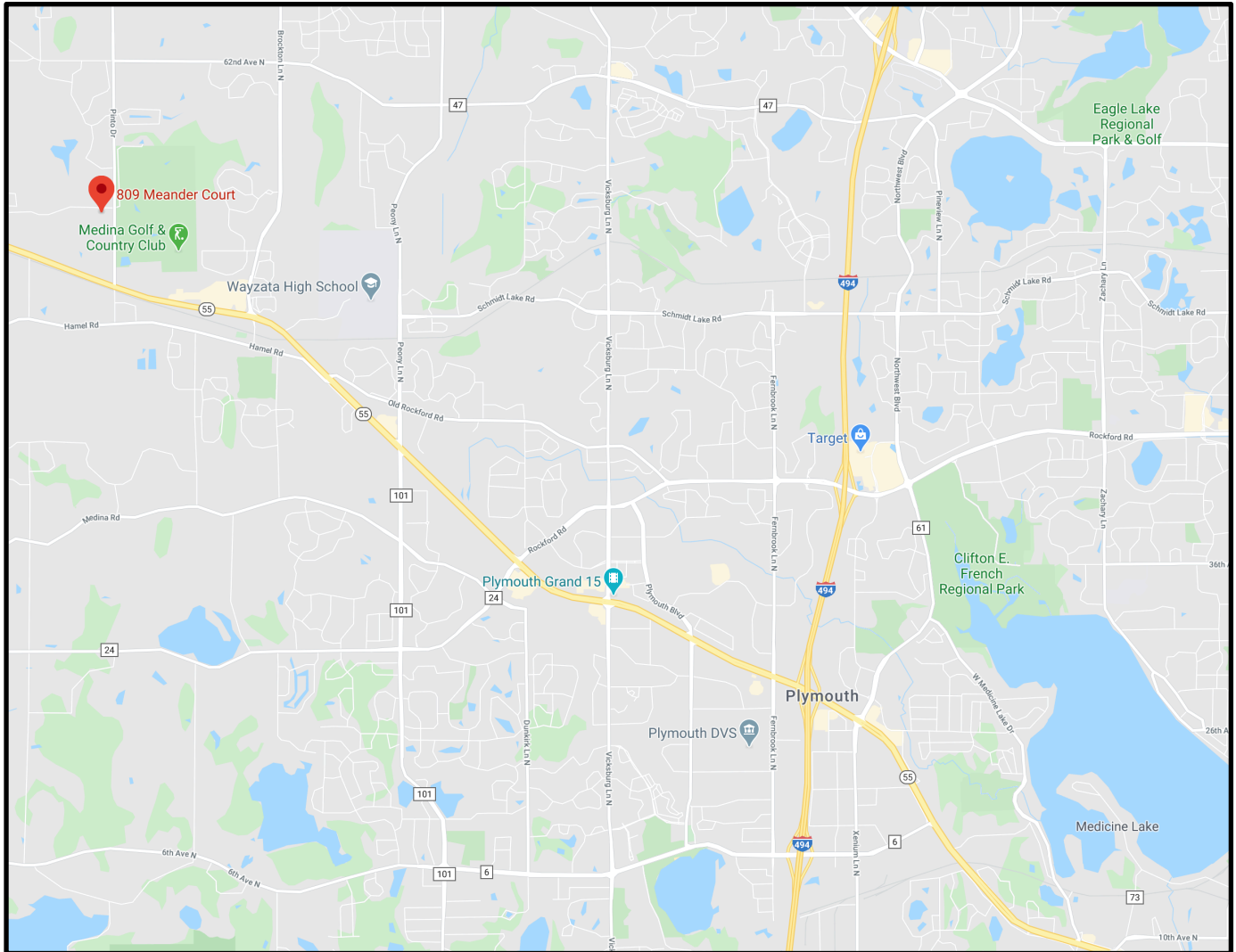


All information is from sources judged to be reliable. However, no warranty or representation is made as to its accuracy. Prospective purchasers should conduct their own due diligence to investigate the suitability of this property as an investment.



All information is from sources judged to be reliable. However, no warranty or representation is made as to its accuracy. Prospective purchasers should conduct their own due diligence to investigate the suitability of this property as an investment.

Map



All information is from sources judged to be reliable. However, no warranty or representation is made as to its accuracy. Prospective purchasers should conduct their own due diligence to investigate the suitability of this property as an investment.