

FOR LEASE | 25,000 SF
2929 NW GRAND AVENUE
PHOENIX, ARIZONA

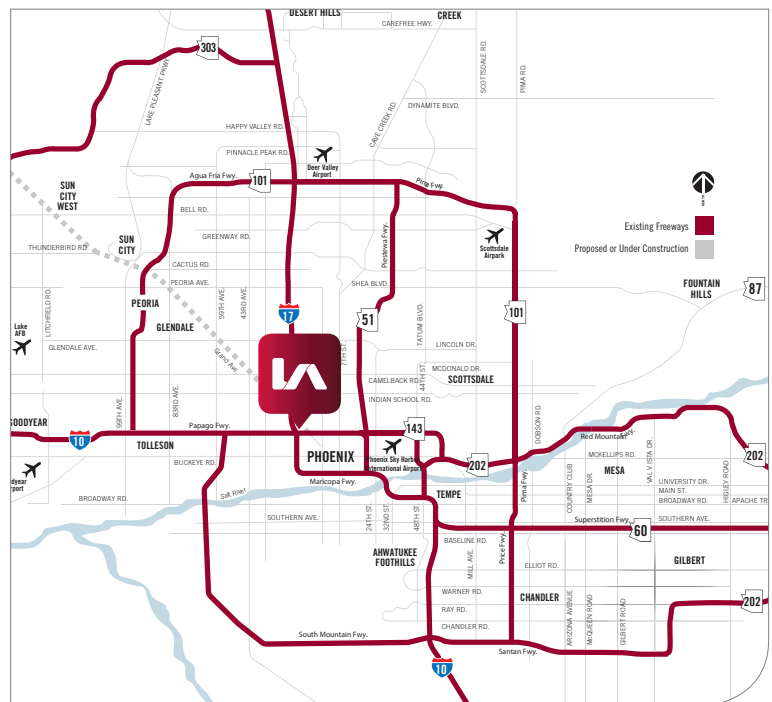


FEATURES

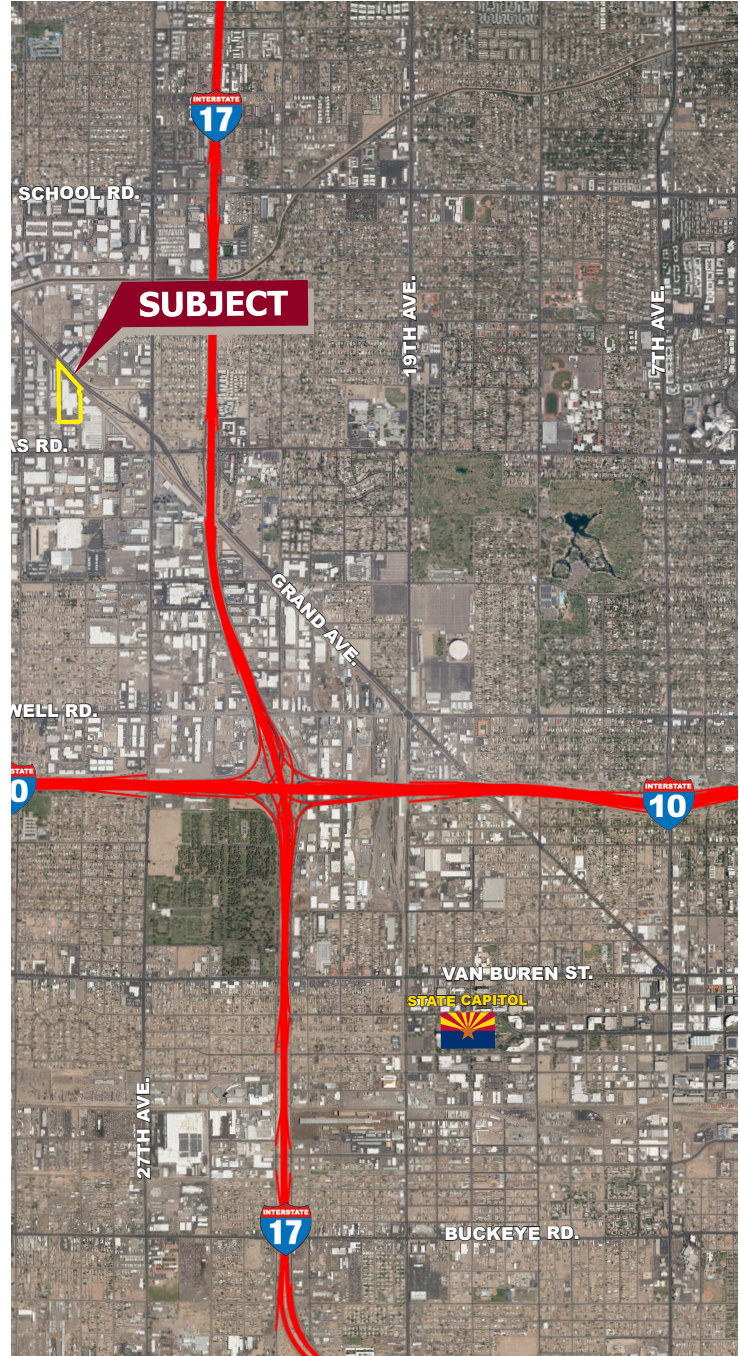
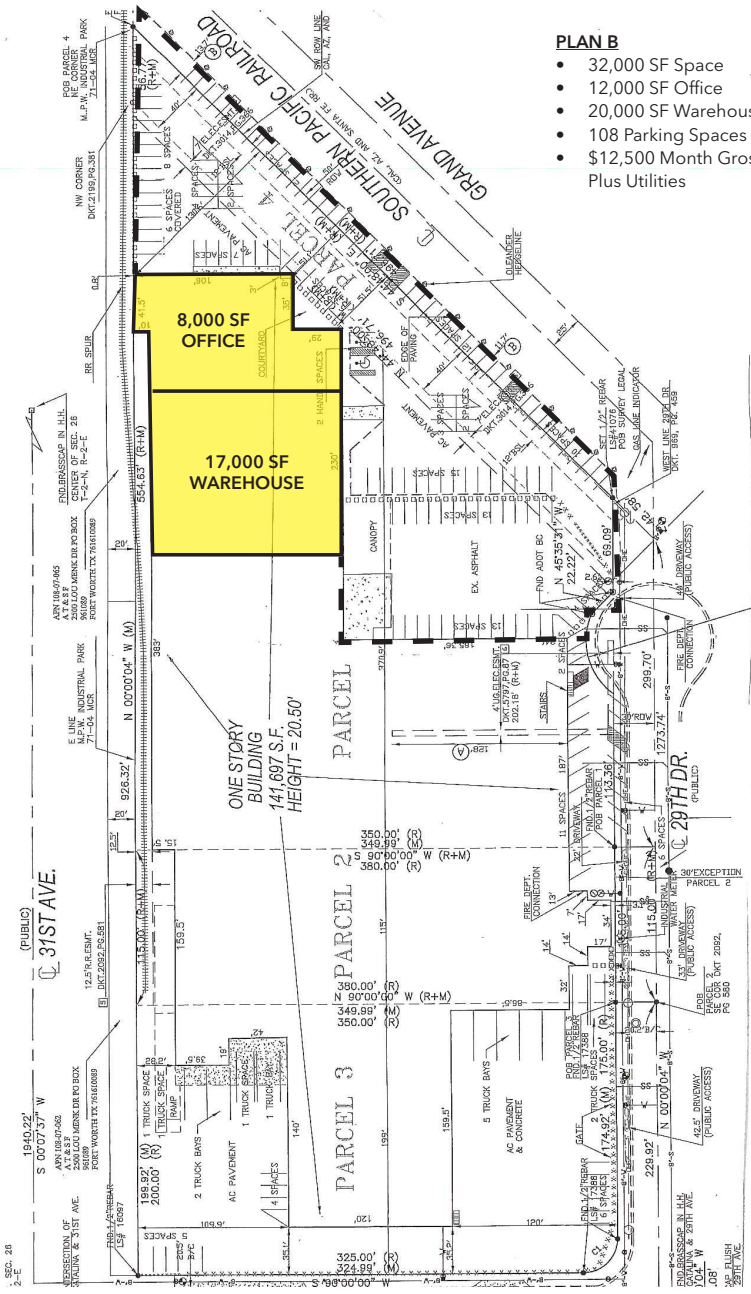
- 25,000 SQ. FT. - North Side of Building
- 8,000 SF Office Area
- 17,000 SF Warehouse Area
- City of Phoenix A-2 Zoning
- 100 Car Parking
- Roll Up Truck Door
- 18' Warehouse Clear Height
- Natural Gas Available
- Attractive Landscaping
- \$12,500 mo. gross (.50 Sf)

Rick Robertson
rrobertson@leearizona.com
D 602.954.3748

Scott Smith
ssmith@leearizona.com
D 602.954.3768



FOR LEASE | 25,000 SF
2929 NW GRAND AVENUE
 PHOENIX, ARIZONA



Rick Robertson
 rrobertson@learizona.com
 D 602.954.3748

Scott Smith
 ssmith@learizona.com
 D 602.954.3768