

FOR LEASE ±16,100 SF
625 S. 27TH AVENUE, #137
PHOENIX, ARIZONA 85009



**LEE &
ASSOCIATES**
COMMERCIAL REAL ESTATE SERVICES

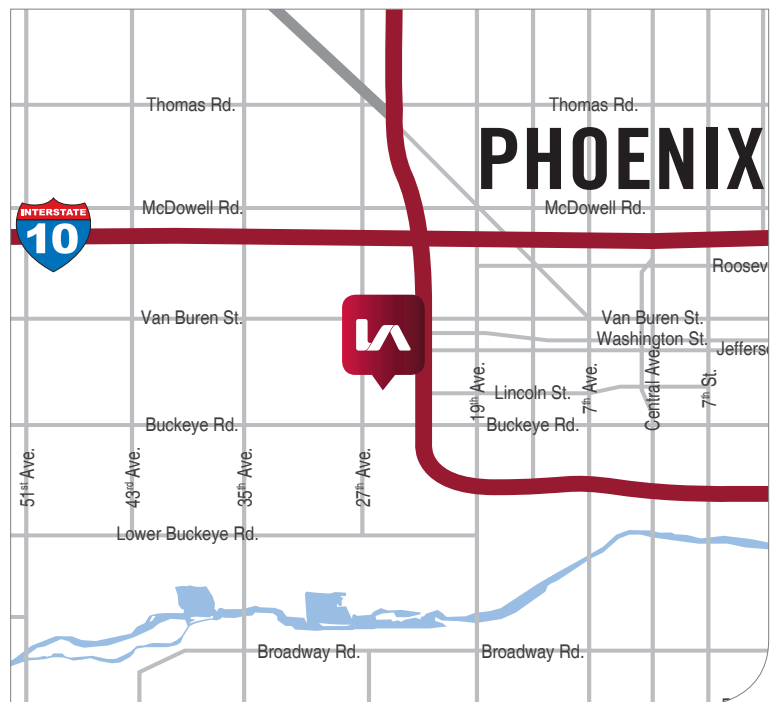
COWLEY INDUSTRIAL PARK



FEATURES

- ±16,100 SF - ±38° Cooler Capability
- 10 Dock High Doors #s 126-133 & 135+136
- Kelly Load Levelers
- Fire Sprinklers
- T-5 Motion Lighting
- 34' x 34' Typical Bay Spacing
- Evap Coolers
- Concrete Roof
- Low Nets \$.07/SF
- Secure - Fenced Campus
- Low Price - \$.65 NNN/SF

Scott Smith
ssmith@learizona.com
D 602.954.3768



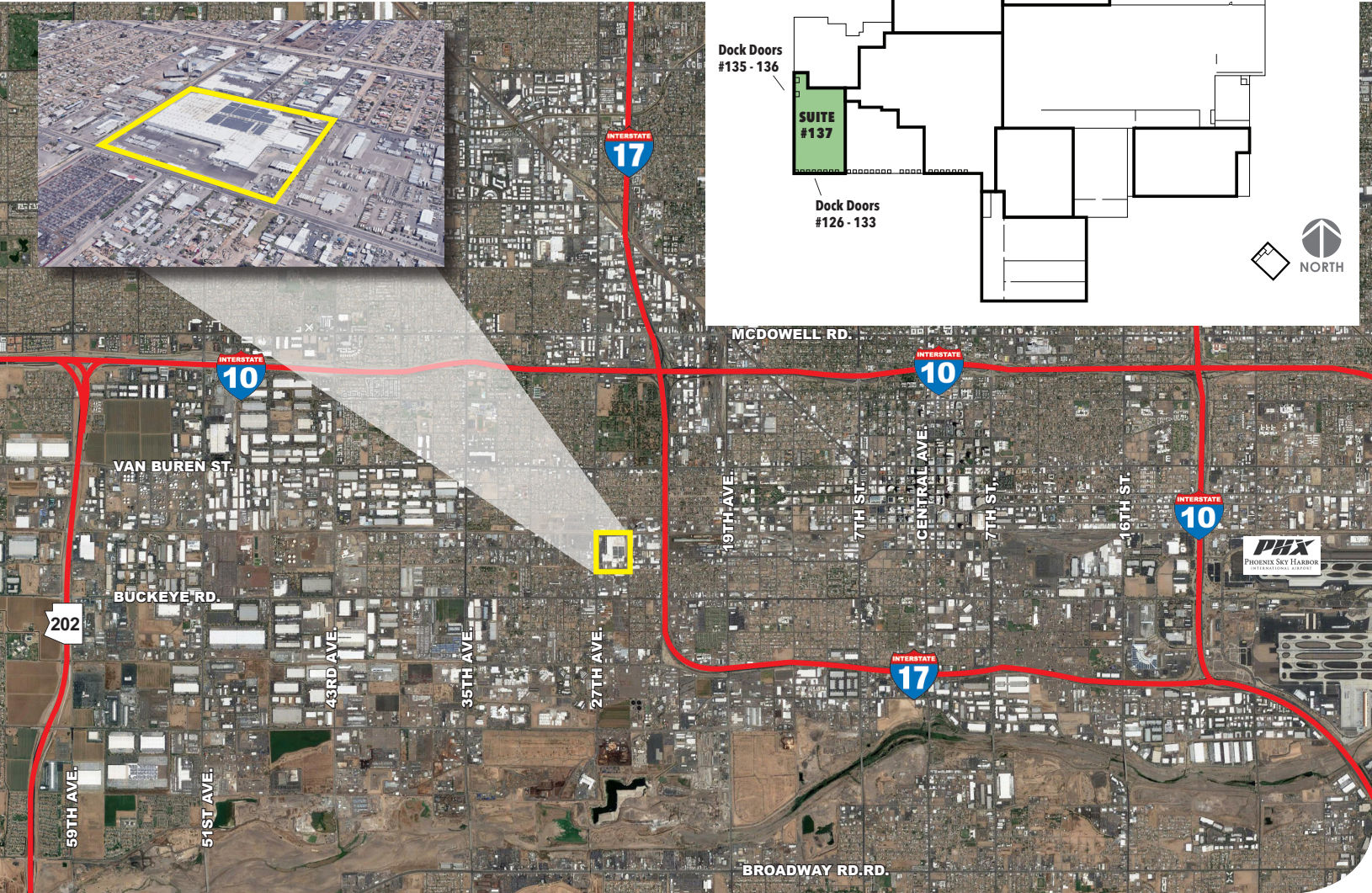
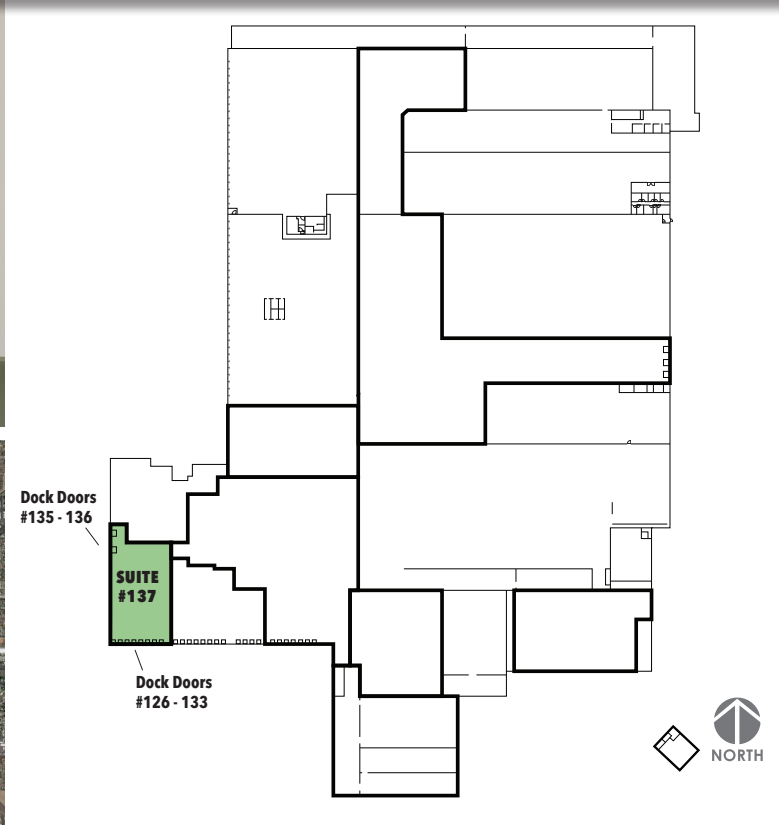
3200 East Camelback Road, Suite 100 | Phoenix, Arizona 85018 | 602-956-7777 | www.learizona.com



All information furnished regarding property for sale, rental or financing is from sources deemed reliable, but no warranty or representation is made to the accuracy thereof and same is submitted to errors, omissions, change of price, rental or other conditions prior to sale, lease or financing or withdrawal without notice. No liability of any kind is to be imposed on the broker herein.

FOR LEASE ±16,100 SF
625 S. 27TH AVENUE, #137
PHOENIX, ARIZONA 85009

LEE & ASSOCIATES
COMMERCIAL REAL ESTATE SERVICES



Scott Smith
ssmith@learizona.com
D 602.954.3768

3200 East Camelback Road, Suite 100 | Phoenix, Arizona 85018 | 602-956-7777 | www.learizona.com



All information furnished regarding property for sale, rental or financing is from sources deemed reliable, but no warranty or representation is made to the accuracy thereof and same is submitted to errors, omissions, change of price, rental or other conditions prior to sale, lease or financing or withdrawal without notice. No liability of any kind is to be imposed on the broker herein.