

FOR LEASE ±92,000 SF  
625 S. 27TH AVENUE, #115  
PHOENIX, ARIZONA 85009



**LEE &  
ASSOCIATES**  
COMMERCIAL REAL ESTATE SERVICES

## COWLEY INDUSTRIAL PARK



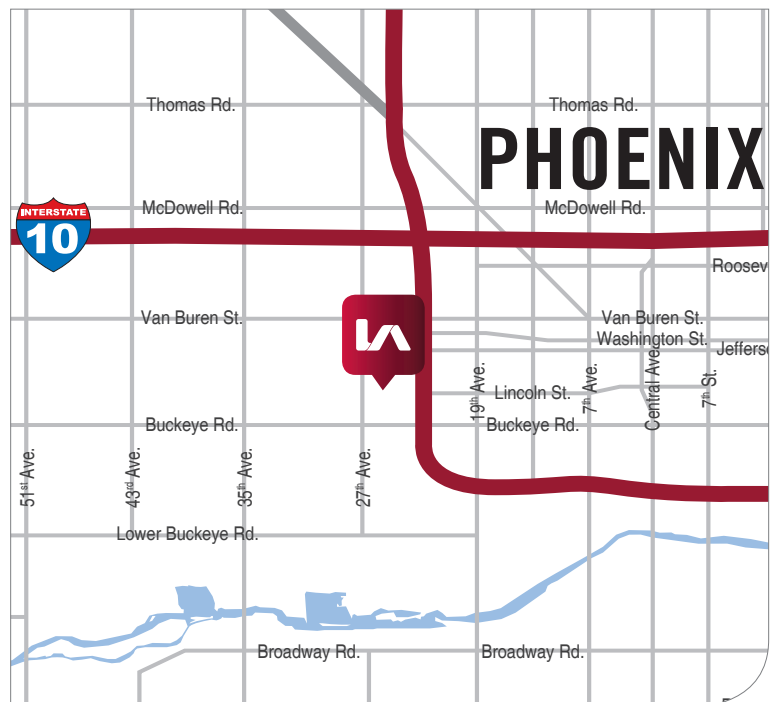
### FEATURES

- ±92,000 SF - Dry Bulk Warehouse
- 3 - 7'x9' Dock High Doors #s 77, 79 & 79
- Kelly Load Levelers
- Fire Sprinklers
- T-5 Motion Lighting
- 34' x 34' Typical Bay Spacing
- Evap Coolers
- Concrete Roof
- Low Nets \$.08/SF
- Secure - Fenced Campus
- Low Price - \$.25 NNN/SF

**Scott Smith**

ssmith@learizona.com

D 602.954.3768



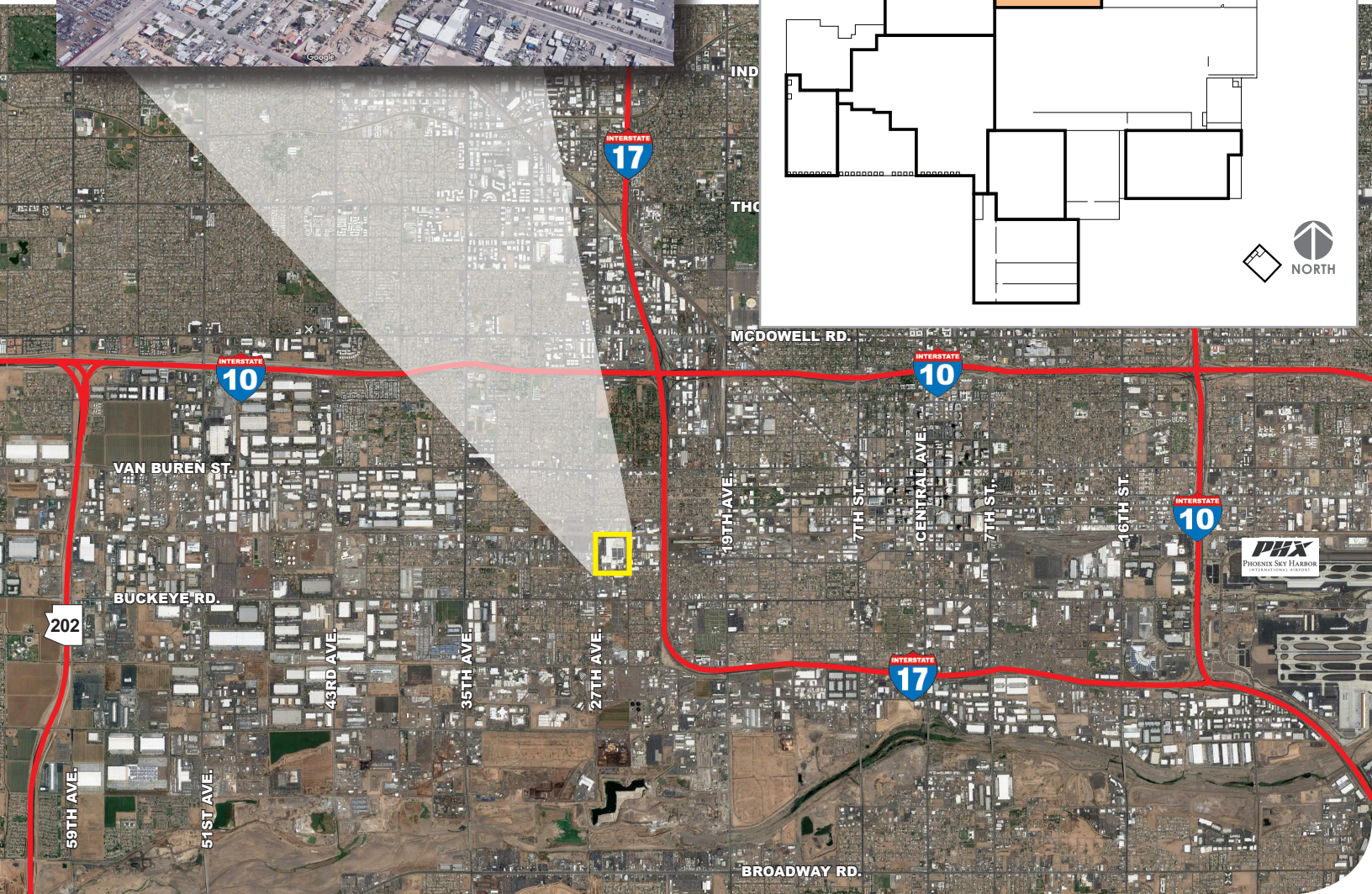
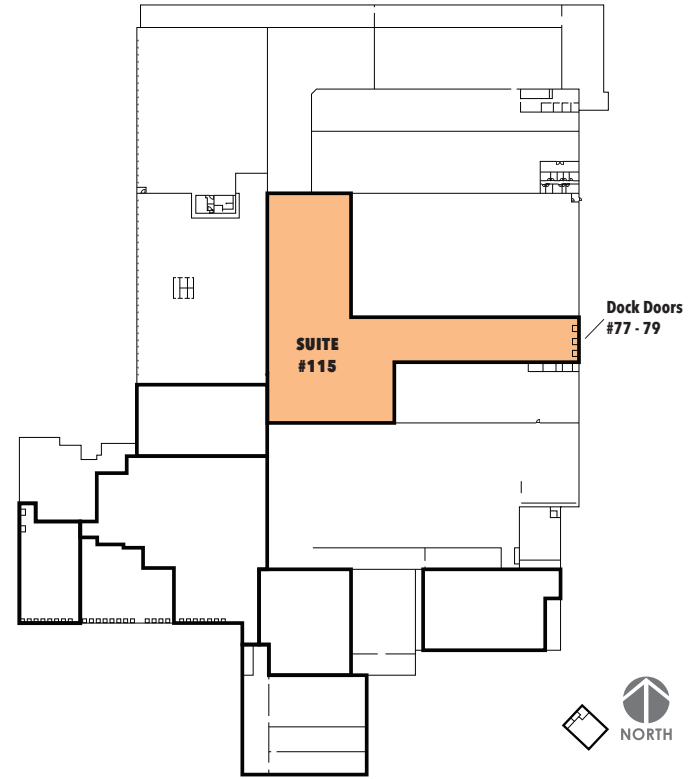
3200 East Camelback Road, Suite 100 | Phoenix, Arizona 85018 | 602-956-7777 | www.learizona.com



All information furnished regarding property for sale, rental or financing is from sources deemed reliable, but no warranty or representation is made to the accuracy thereof and same is submitted to errors, omissions, change of price, rental or other conditions prior to sale, lease or financing or withdrawal without notice. No liability of any kind is to be imposed on the broker herein.

FOR LEASE ±92,000 SF  
625 S. 27TH AVENUE, #115  
PHOENIX, ARIZONA 85009

**LEE & ASSOCIATES**  
COMMERCIAL REAL ESTATE SERVICES



**Scott Smith**  
ssmith@learizona.com  
D 602.954.3768

3200 East Camelback Road, Suite 100 | Phoenix, Arizona 85018 | 602-956-7777 | www.learizona.com



All information furnished regarding property for sale, rental or financing is from sources deemed reliable, but no warranty or representation is made to the accuracy thereof and same is submitted to errors, omissions, change of price, rental or other conditions prior to sale, lease or financing or withdrawal without notice. No liability of any kind is to be imposed on the broker herein.