

8238 COOLEY LAKE ROAD
UNIT B
COMMERCE TWP., MICHIGAN
COMMERCIAL SPACE AVAILABLE
1,530 Square Feet Available



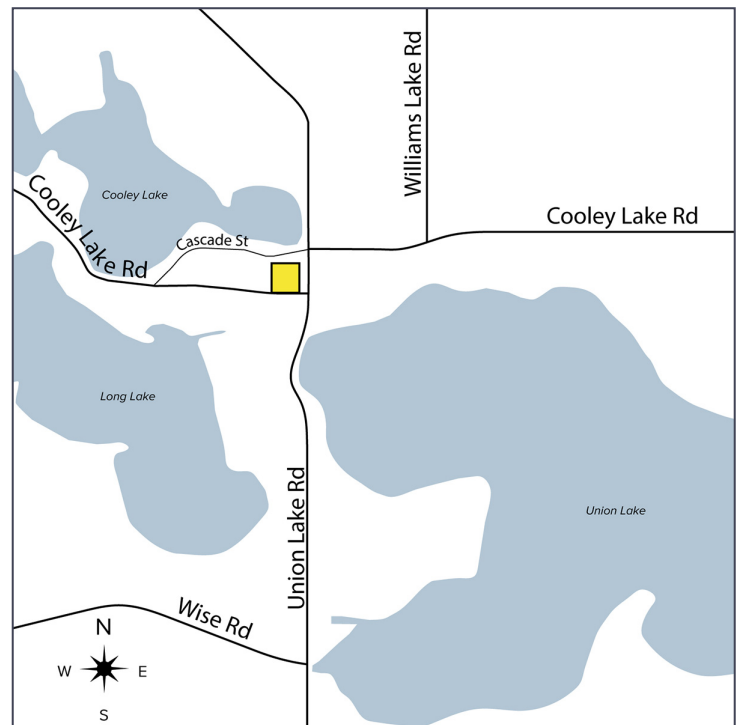
SIGNATURE ASSOCIATES
KNOW SIGNATURE | KNOW RESULTS

COMMERCIAL SPACE



PROPERTY FEATURES

- 1,530 available square feet
- Ample parking
- Frontage on Cooley Lake Road just west of Union Lake Road
- Space includes office, work area, and warehouse
- Sublease Rate: \$1,268/month Gross



For more information, please contact:

JEFF LEMANSKI
(248) 359 0641
jlemanski@signatureassociates.com

SIGNATURE ASSOCIATES
One Towne Square, Suite 1200
Southfield, MI 48076
www.signatureassociates.com

8283 Cooley Lake Road – Commerce Twp., Michigan

Commercial Space Available

1,530
Square Feet
AVAILABLE

DEMOGRAPHICS

	POPULATION	MED. HH INCOME
1 MILE	4,633	\$92,813
3 MILE	49,811	\$97,649
5 MILE	121,902	\$93,962

TRAFFIC COUNTS (TWO-WAY)

13,017	Cooley Lake Rd. W. of Union Lake Rd.
11,176	Cooley Lake Rd. E. of Union Lake Rd.
30,317	Union Lake Rd. S. of Cooley Lake Rd.
24,771	Union Lake Rd. N. of Cooley Lake Rd.



For more information, please contact:

JEFF LEMANSKI
(248) 359 0641
jlemanski@signatureassociates.com

SIGNATURE ASSOCIATES
One Towne Square, Suite 1200
Southfield, MI 48076
www.signatureassociates.com