

450-470 ENTERPRISE COURT  
BLOOMFIELD TWP, MICHIGAN



**SIGNATURE  
ASSOCIATES**  
KNOW SIGNATURE | KNOW RESULTS

HI-TECH OR INDUSTRIAL FOR LEASE  
Up to 23,398 Square Feet Available



## PROPERTY FEATURES

- 23,398 square feet total
- Separate entrances allow for multiple tenants from 5,000 sq. ft. and larger
- Prime location near Telegraph and Square Lake Rd.
- 12' clear height
- Grade level door, more possible
- 1000 amps, 220 volts power
- Located on 1.780 acres with 95 parking spaces
- Unique opportunity in Bloomfield Hills for office, or industrial space at rates well below competing hi-tech and office properties
- Contact broker for lease information



For more information, please contact:

**JEFF LEMANSKI**

(248) 359 0641

[jlemanski@signatureassociates.com](mailto:jlemanski@signatureassociates.com)

**KRIS PAWLOWSKI**

(248) 359 3801

[kpawlowski@signatureassociates.com](mailto:kpawlowski@signatureassociates.com)

**SIGNATURE ASSOCIATES**

One Towne Square, Suite 1200

Southfield, MI 48076

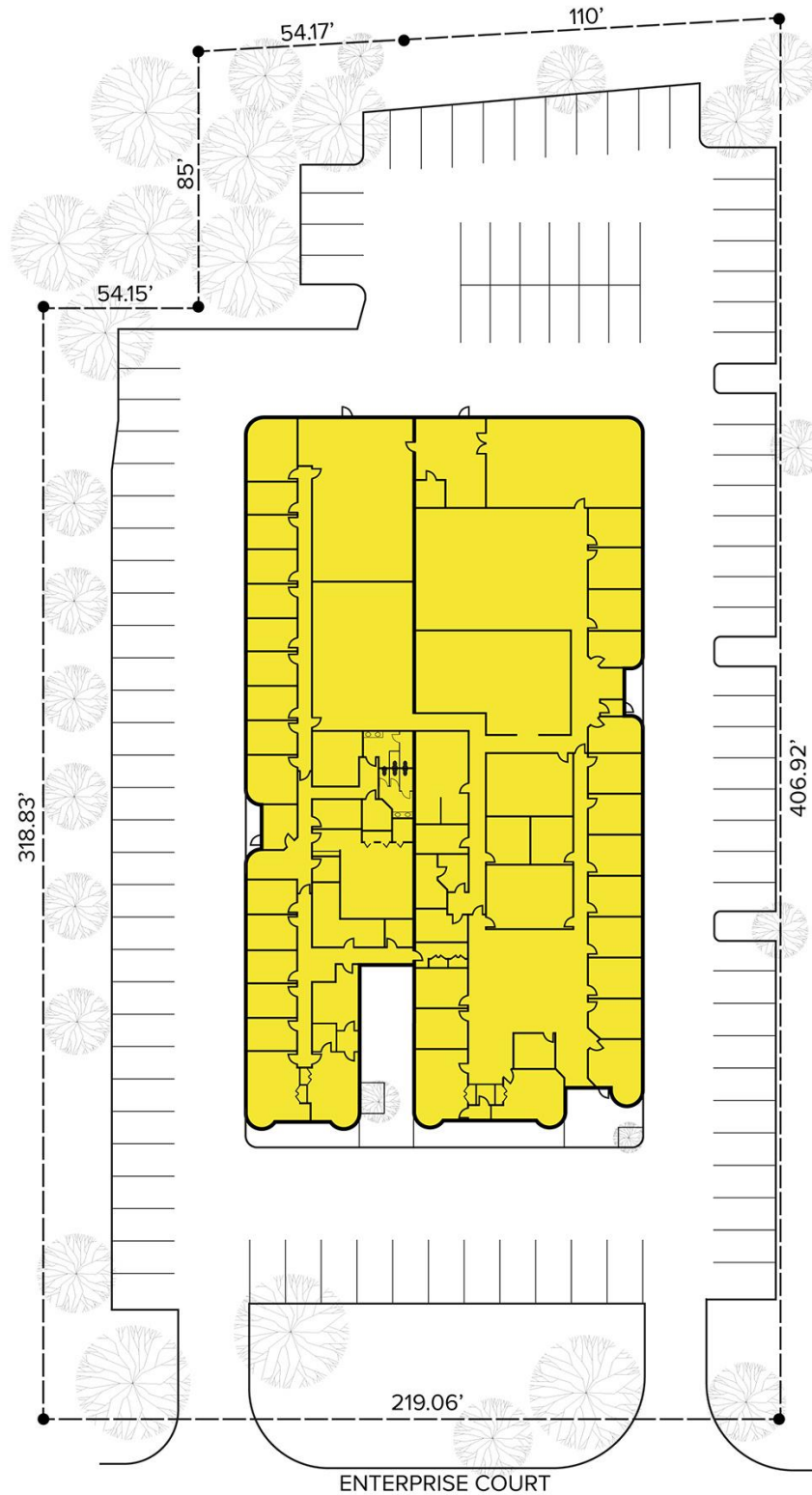
[www.signatureassociates.com](http://www.signatureassociates.com)

# 450-470 Enterprise Court – Bloomfield Twp, Michigan

Hi-Tech or Industrial For Lease

5,000-23,398  
Square Feet  
AVAILABLE

## Site Plan



For more information, please contact:

**JEFF LEMANSKI**

(248) 359 0641

[jlemanski@signatureassociates.com](mailto:jlemanski@signatureassociates.com)

**KRIS PAWLOWSKI**

(248) 359 3801

[kpawlowski@signatureassociates.com](mailto:kpawlowski@signatureassociates.com)

**SIGNATURE ASSOCIATES**

One Towne Square, Suite 1200

Southfield, MI 48076

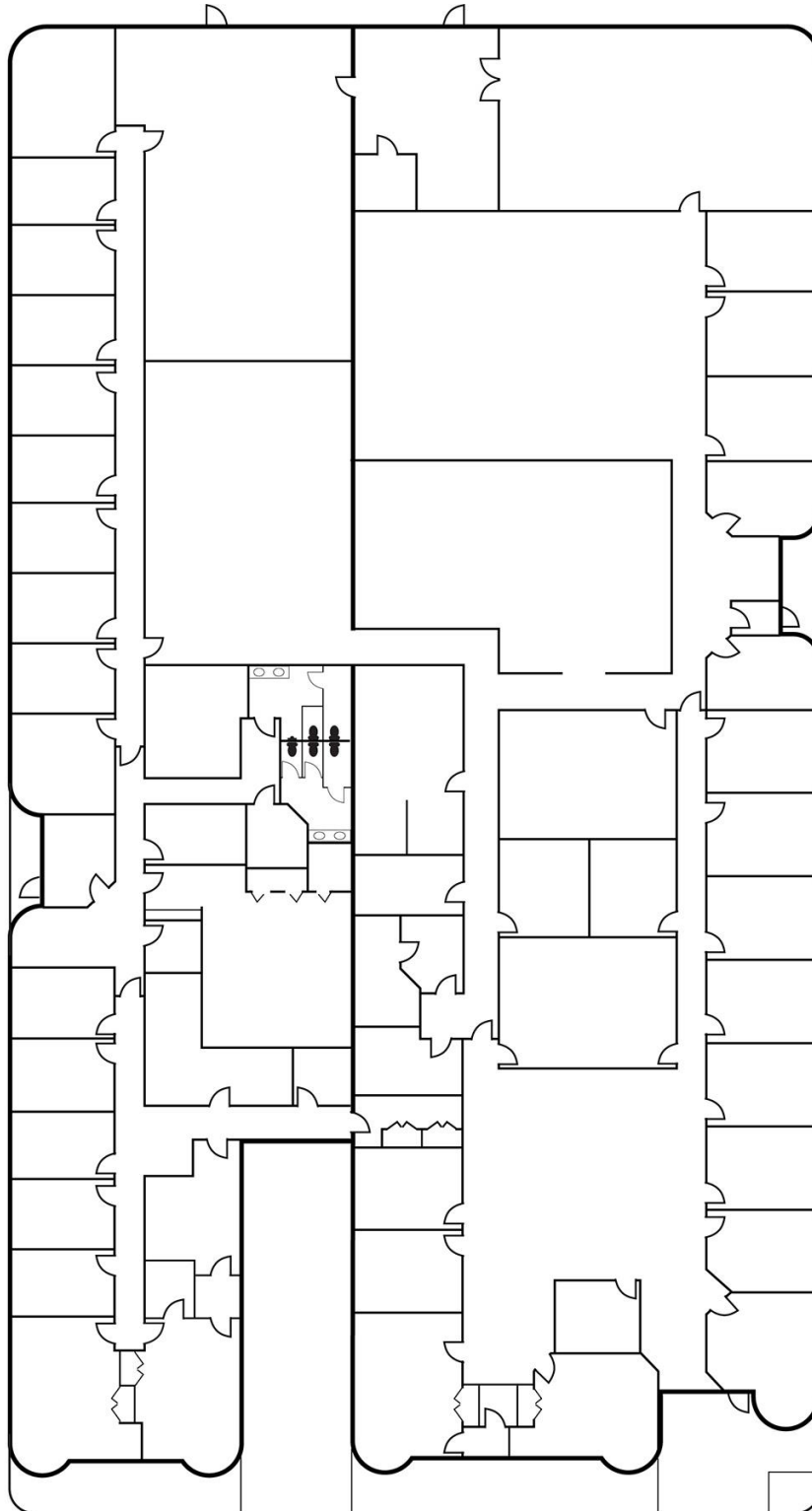
[www.signatureassociates.com](http://www.signatureassociates.com)

# 450-470 Enterprise Court – Bloomfield Twp, Michigan

Hi-Tech or Industrial For Lease

5,000-23,398  
Square Feet  
AVAILABLE

## Floor Plan



For more information, please contact:

**JEFF LEMANSKI**

(248) 359 0641

[jlemanski@signatureassociates.com](mailto:jlemanski@signatureassociates.com)

**KRIS PAWLOWSKI**

(248) 359 3801

[kpawlowski@signatureassociates.com](mailto:kpawlowski@signatureassociates.com)

**SIGNATURE ASSOCIATES**

One Towne Square, Suite 1200

Southfield, MI 48076

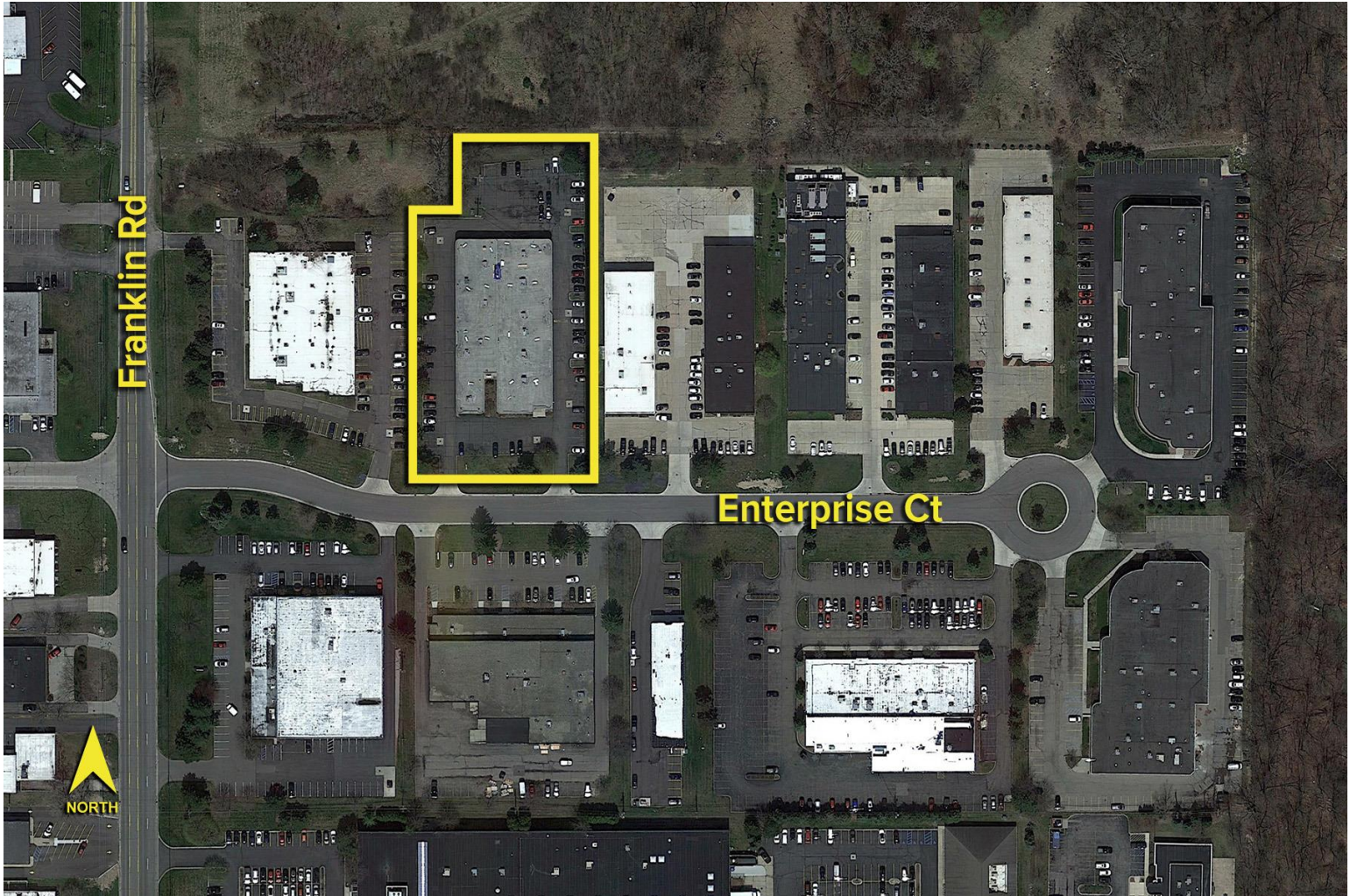
[www.signatureassociates.com](http://www.signatureassociates.com)

# 450-470 Enterprise Court – Bloomfield Twp, Michigan

Hi-Tech or Industrial For Lease

5,000-23,398  
Square Feet  
AVAILABLE

Aerial



For more information, please contact:

**JEFF LEMANSKI**

(248) 359 0641

[jlemanski@signatureassociates.com](mailto:jlemanski@signatureassociates.com)

**KRIS PAWLOWSKI**

(248) 359 3801

[kpawlowski@signatureassociates.com](mailto:kpawlowski@signatureassociates.com)

**SIGNATURE ASSOCIATES**

One Towne Square, Suite 1200

Southfield, MI 48076

[www.signatureassociates.com](http://www.signatureassociates.com)