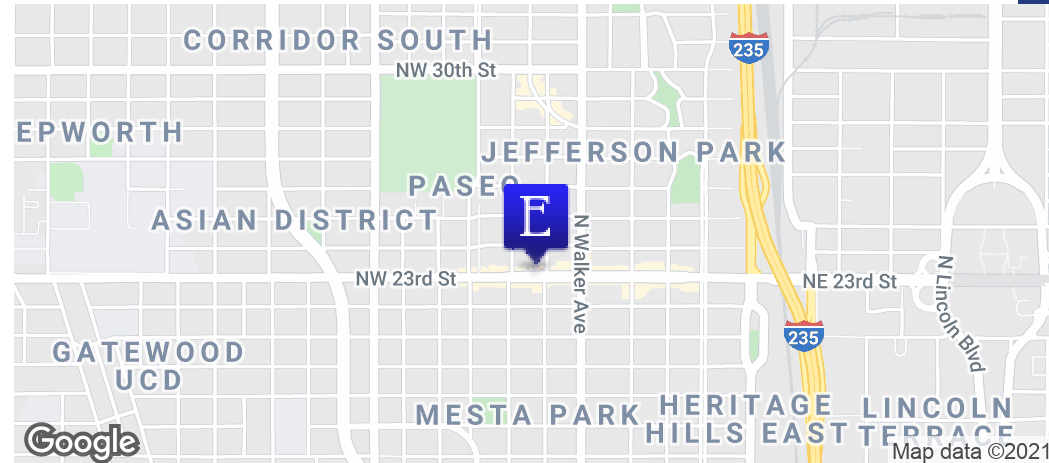


MESTA PARK BUILDING

600 NW 23RD ST., OKLAHOMA CITY, OK 73103



OFFERING SUMMARY

Available SF:	227 - 1,527 SF
Full Service Rate:	\$18.00/SF
Lot Size:	0.64 Acres
Year Built:	1964
Renovated:	2016
Market:	Oklahoma City
Submarket:	Uptown

PROPERTY OVERVIEW

Executive Full Service Offices and single spaces available in this mixed use retail/office building; includes access control. Suite 100, a previous massage therapist, has capped water line, as needed. 1st floor retail anchor tenant is Ted's Cantina.

PROPERTY HIGHLIGHTS

- Newly Renovated Building
- Various Sizes and Configurations
- Executive and Office Suites
- Private Parking Lot
- Located in the Heart of the Uptown 23rd District

LOCATION OVERVIEW

This fully renovated 2-story mixed use building sits on the south side of NW 23rd, in the heart of recent growth and revitalization. This modern looking building has exposed ceilings, great color scheme and wonderful mix of professional, service, and retail tenants.

DEMOGRAPHICS

	1 MILE	3 MILES	5 MILES
Total Households	5,961	32,891	78,608
Total Population	12,297	76,652	192,847
Average HH Income	\$61,173	\$49,288	\$50,270

PAUL SWALES

Equity Commercial Realty II, LLC
paul@fleskeholding.com

(405) 420- 6244 cell
(405) 701- 3505 x218 office

JOSH WHITE, CCIM

Equity Commercial Realty II, LLC
josh@fleskeholding.com

(405) 417- 6761 cell
(405) 701- 3505 x221 office



MESTA PARK BUILDING

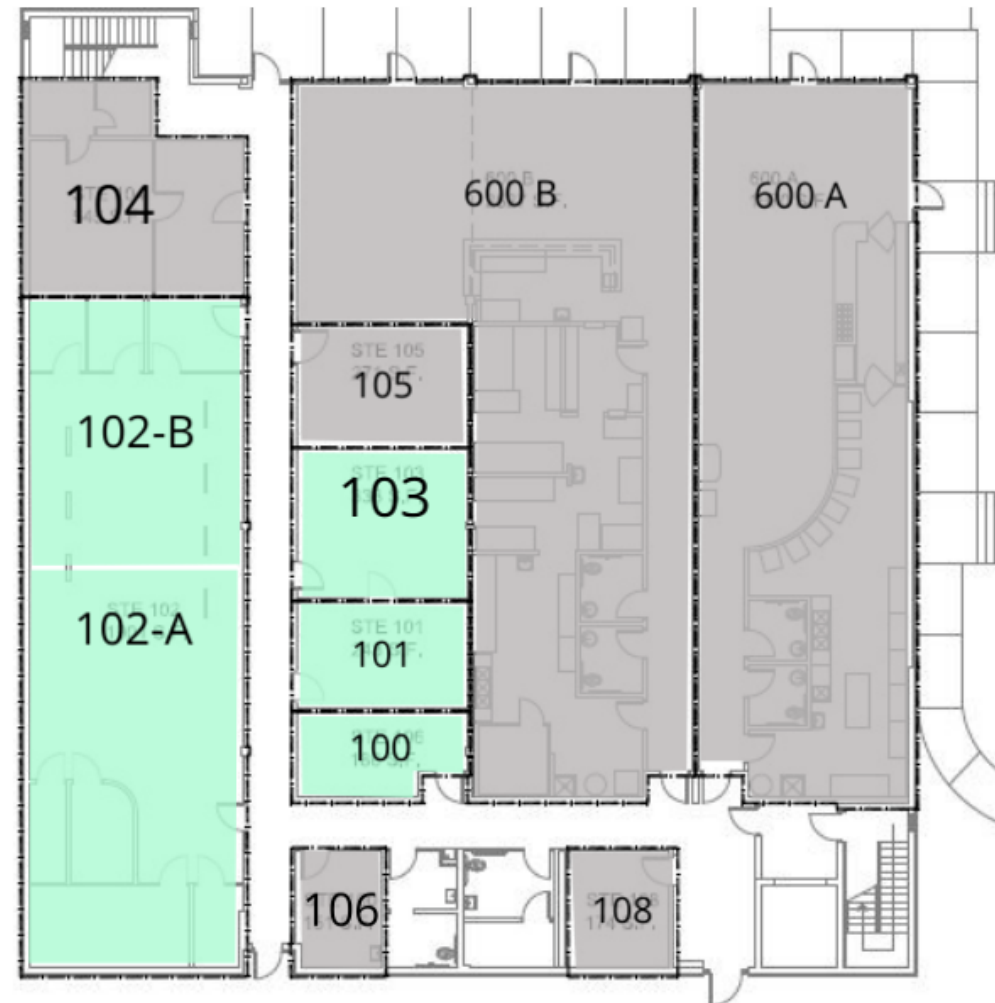
600 NW 23RD ST., OKLAHOMA CITY, OK 73103

LEASE INFORMATION

Lease Type: Full Service Lease Term: Negotiable
Total Space: 227 - 1,527 SF Lease Rate: \$15.90 - \$18 SF/yr

AVAILABLE SPACES

SUITE	TENANT	SIZE (SF)	LEASE TYPE	LEASE RATE
100	Available	227 SF	Full Service	\$18.00 SF/yr
101	Available	296 SF	Full Service	\$18.00 SF/yr
102-A	Available	1,333 SF	Full Service	\$18.00 SF/yr
102-B (Sublease)	Available	985 SF	Full Service	\$1,305 per month
103	Available	412 SF	Full Service	\$18.00 SF/yr



PAUL SWALES

Equity Commercial Realty II, LLC
paul@fleskeholding.com

(405) 420- 6244 cell
(405) 701- 3505 x218 office

JOSH WHITE, CCIM

Equity Commercial Realty II, LLC
josh@fleskeholding.com

(405) 417- 6761 cell
(405) 701- 3505 x221 office

MESTA PARK BUILDING

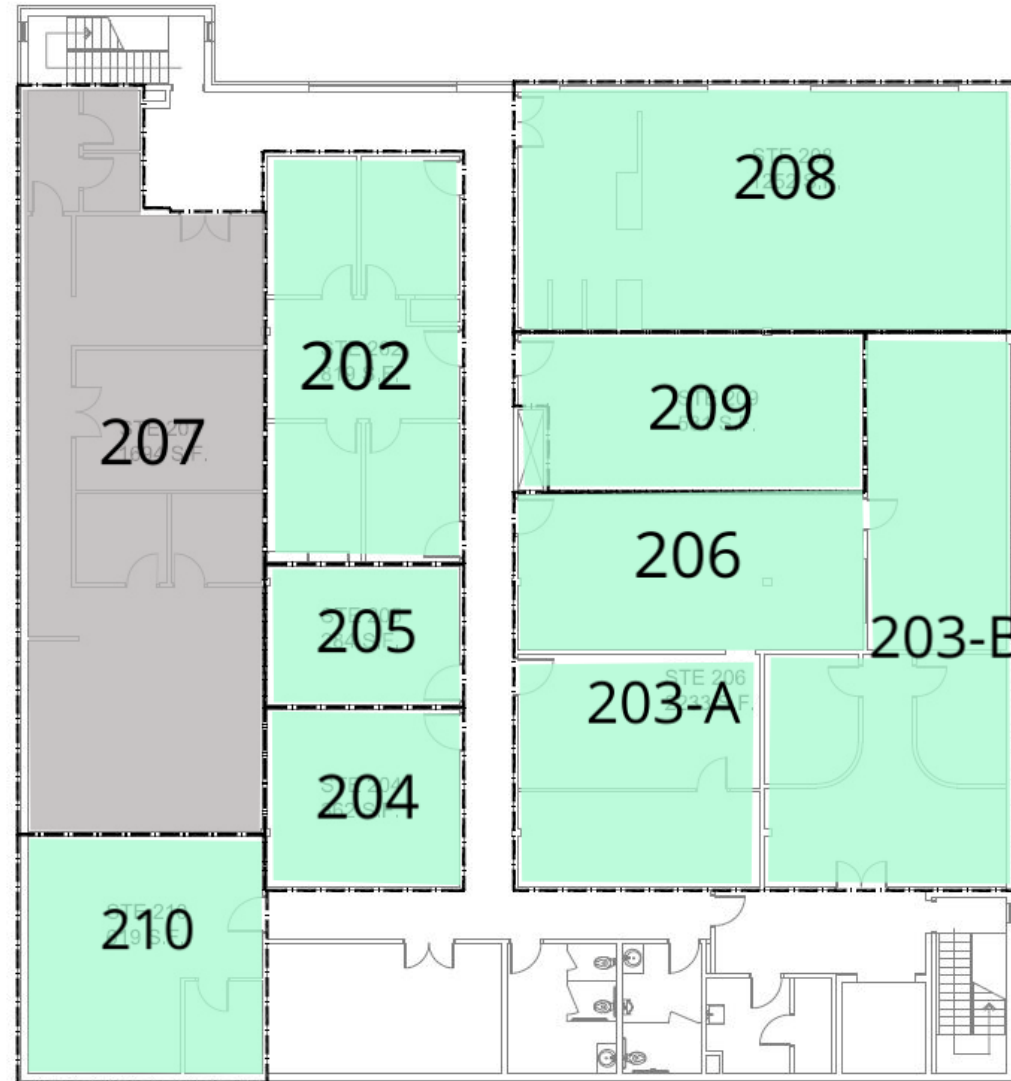
600 NW 23RD ST., OKLAHOMA CITY, OK 73103

LEASE INFORMATION

Lease Type: Full Service Lease Term: Negotiable
Total Space: 227 - 1,527 SF Lease Rate: \$15.90 - \$18 SF/yr

AVAILABLE SPACES

SUITE	TENANT	SIZE (SF)	LEASE TYPE	LEASE RATE
202	Available	999 SF	Full Service	\$18.00 SF/yr
203-A	Available	717 SF	Full Service	\$18.00 SF/yr
203-B	Available	1,327 SF	Full Service	\$18.00 SF/yr
204	Available	441 SF	Full Service	\$18.00 SF/yr
205	Available	346 SF	Full Service	\$18.00 SF/yr
206	Available	596 SF	Full Service	\$18.00 SF/yr
208	Available	1,527 SF	Full Service	\$18.00 SF/yr
209	Available	647 SF	Full Service	\$18.00 SF/yr
210	Available	755 SF	Full Service	\$18.00 SF/yr



PAUL SWALES

Equity Commercial Realty II, LLC
paul@fleskeholding.com

(405) 420- 6244 cell
(405) 701- 3505 x218 office

JOSH WHITE, CCIM

Equity Commercial Realty II, LLC
josh@fleskeholding.com

(405) 417- 6761 cell
(405) 701- 3505 x221 office