

# ALLRED HAMPTON

**BACK  
OFFICE SPACE**

**8:1000  
PARKING**



Rick Lee  
Principal

Stein Koss  
Principal

[rlee@leearizona.com](mailto:rlee@leearizona.com)

[skoss@leearizona.com](mailto:skoss@leearizona.com)

D 602.954.3742

D 602.912.3520

C 602.390.2173

C 602.510.1999

7307 E. HAMPTON AVENUE, MESA, ARIZONA  
**± 25,225 SF - ±51,000 SF AVAILABLE FOR LEASE**

LOCATED IN SUPERSTITION SPRINGS BUSINESS PARK

3200 East Camelback Road  
Suite 100  
Phoenix, Arizona 85018  
602-956-7777  
[www.leearizona.com](http://www.leearizona.com)

EXCLUSIVELY REPRESENTED BY:

 **LEE &  
ASSOCIATES**  
COMMERCIAL REAL ESTATE SERVICES

## FEATURES

- ±25,225 - 51,000 SF Available
- Parking Ratio: 8.00/1,000 SF
- Zoning: LI, City of Mesa
- Year Built: 2000
- Excellent freeway access to the US-60.
- Allred Hampton is adjacent to over 2 million square feet of retail and restaurant space.



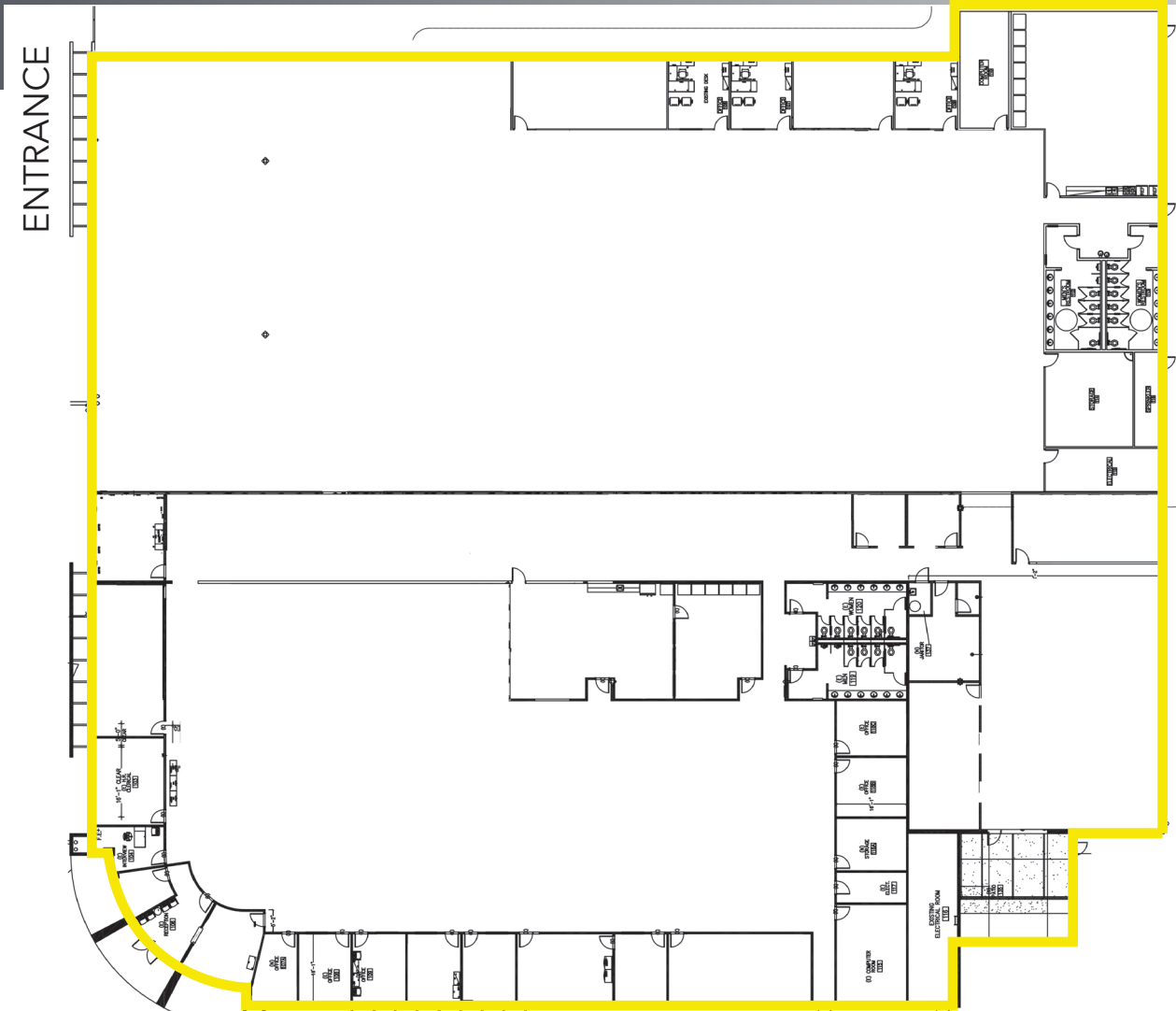
# ALLRED HAMPTON



# FLOOR PLAN



±51,000 SF



# ALLRED HAMPTON

# ALLRED HAMPTON - DEMOGRAPHICS



Mesa is a city in the state of Arizona. It is a suburb located outside of Phoenix and is in Maricopa County. The city's population is 508,958, which makes it the third-largest city in the state and the 38th largest in the country. Mesa is best known for its educational institutions, including Arizona State University's Polytechnic campus.

## **DEMOGRAPHIC SNAPSHOT (5 MILES)**

2019 Population:	508,958
2024 Population Projection:	548,809
Median Household Income:	\$62,047
Median Home Value:	\$232,480
Median Age:	41.20
Planning Area:	137 sq. Miles
Annual Average Rainfall:	9.29 inches
Annual Sunshine Days:	320 days
Average Minimum Temp:	57.5°
Average Maximum Temp:	86.4°

## **MESA'S LARGE EMPLOYERS**

Banner Health	8,321
Mesa Public Schools	8,184
City of Mesa	4,492
The Boeing Company	4,336
Drivetime Automotive Group Inc	1,422
24-7 Intouch	1,400
AT&T	1,276
Maricopa County	1,054
Santander Consumer USA	900
Dexcom	850
Steward Health Care	820
Maricopa County Community College District	775
Empire Southwest LLC	756
State of Arizona	670
United States Postal Service	621
SRP	609
MD Helicopters	600



Rick Lee                      Stein Koss  
Principal                      Principal  
rlee@leearizona.com      skoss@leearizona.com  
D 602.954.3742              D 602.912.3520

3200 East Camelback Road  
Suite 100  
Phoenix, Arizona 85018  
602-956-7777  
www.leearizona.com

OWNED & MANAGED BY:



All information furnished regarding property for sale, rental or financing is from sources deemed reliable, but no warranty or representation is made to the accuracy thereof and same is submitted to errors, omissions, change of price, rental or other conditions prior to sale, lease or financing or withdrawal without notice. No liability of any kind is to be imposed on the broker herein.