

Desert Ridge

CORPORATE CENTER | PHASE IV

90,000 SF OFFICE BUILDING WEST OF THE NWC OF LOOP 101 & TATUM BLVD.



+90,000 SF OFFICE BTS OPTION W/LOOP 101 FRONTAGE

- 90,000 SF Office on 6.8 Acres
- 4.5:1000 Parking
- Loop 101 Freeway Exposure
- Full Diamond Interchange @ Tatum & Loop 101
- SR-51 & Loop 101 Interchange within 1 Mile
- Over 1 Million SF of Retail Amenities on & Adjacent to the Project

Exclusively Represented by:

CRAIG COPPOLA, CCIM, CRE, SIOR

PRINCIPAL

(602) 954-3762

ccoppola@leearizona.com

COLTON TRAUTER

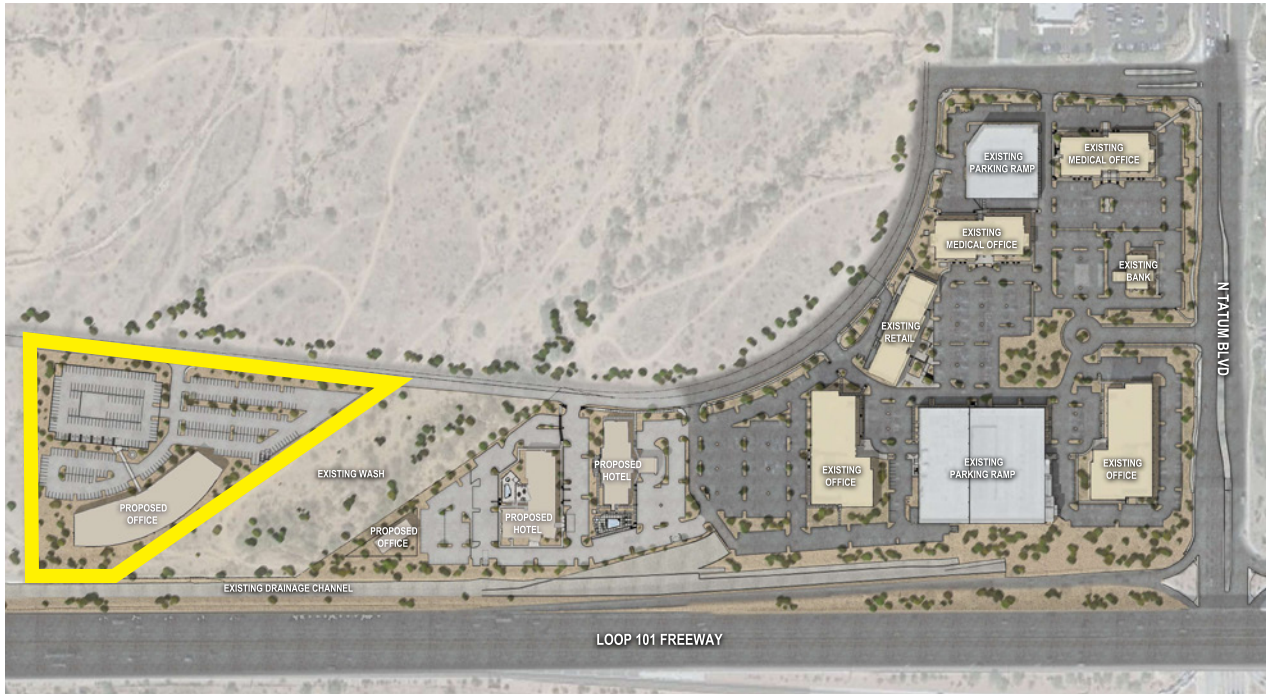
PRINCIPAL

(602) 474.9503

ctrauter@leearizona.com



COMMERCIAL REAL ESTATE SERVICES



DESERT RIDGE CORPORATE CENTER PHASE IV

90,000 SF OFFICE BUILDING
WEST OF THE NWC OF LOOP
101 & TATUM BLVD.

Developed by:



Exclusively Represented by:

CRAIG COPPOLA, CCIM, CRE, SIOR
PRINCIPAL
(602) 954-3762
ccoppola@leearizona.com

COLTON TRAUTER
PRINCIPAL
(602) 474.9503
ctrauter@leearizona.com



3200 E. Camelback Road, Suite #100
Phoenix, Arizona, 85018
ph: 602.956.7777 fx: 602.954.0510
www.leearizona.com

All information furnished regarding property for sale, rental or financing is from sources deemed reliable, but no warranty or representation is made to the accuracy thereof and same is submitted to errors, omissions, change of price, rental or other conditions prior to sale, lease or financing or withdrawal without notice. No liability of any kind is to be imposed on the broker herein.

