

# 255 Main Street Cambridge, MA

## Sublease Available

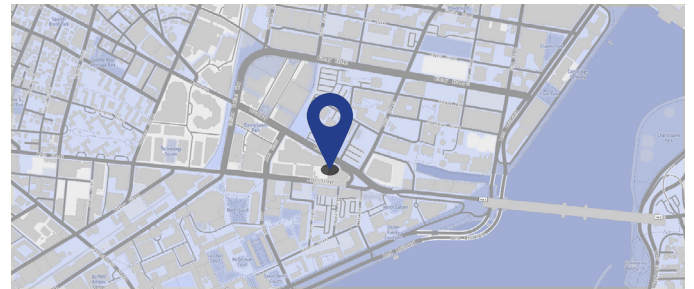
### Space Profile

<b>Premises</b>	32,077 RSF
<b>Floors</b>	6 & 7
<b>Availability</b>	Q1 2021
<b>Term</b>	Through March 31, 2023
<b>Rental Rate</b>	Negotiable
<b>Submarket</b>	Kendall Square
<b>Parking</b>	2.00 unreserved per 1,000 SF (In Garage)

### Features

- Fully furnished 7th floor and partially furnished 6th floor
- Recently built-out space with mostly open layout and lots of natural light
- Fitness center and locker room with showers on the 7th floor
- Great views of the neighborhood
- Located in the heart of Kendall Square with immediate access to the Kendall/MIT Red Line T stop
- Within walking distance to many area hotels, restaurants and retail shops

### Map



### For More Information

Cresa  
280 Congress Street, Floor 10, Boston, MA 02210  
cresa.com



**John Coakley**  
617.758.6039  
jcoakley@cresa.com



**Paul Delaney**  
617.758.6016  
pdelaney@cresa.com

Even though obtained from sources deemed reliable, no warranty or representation, express or implied, is made as to the accuracy of the information herein, and it is subject to errors, omissions, change of price, rental or other conditions, withdrawal without notice, and to any special listing conditions imposed by our principals.



Take a Virtual Tour!





# 255 Main Street Cambridge, Massachusetts

6th & 7th Floor - 32,077 RSF



LEGEND

Light Yellow	OPEN OFFICE
Blue	OFFICE
Light Blue	COLLAB SPACE
Orange	MEETING SPACE
Light Orange	BREAK ROOM
Grey	SUPPORT SPACES
Dark Grey	ADJACENT SUITE

6th Floor - 20,599 RSF



7th Floor - 11,478 RSF

## For More Information

Cresa  
280 Congress Street, Floor 10  
Boston, MA 02210  
cresa.com



John Coakley  
617.758.6039  
jcoakley@cresa.com

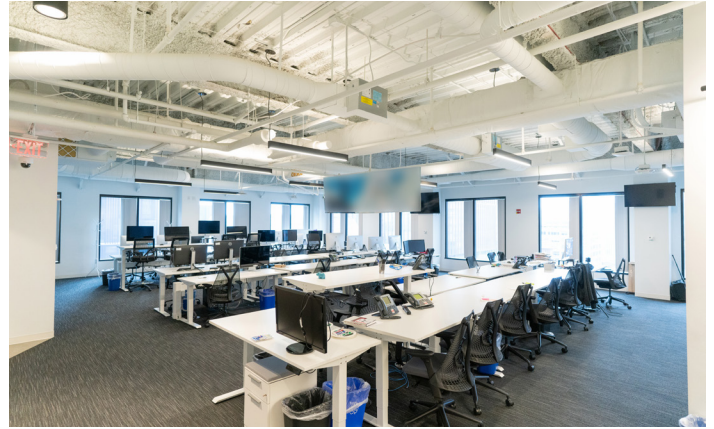


Paul Delaney  
617.758.6016  
pdelaney@cresa.com



# 255 Main Street Cambridge, Massachusetts

6th & 7th Floor - 32,077 RSF



## For More Information

Cresa  
280 Congress Street, Floor 10  
Boston, MA 02210  
cresa.com



John Coakley  
617.758.6039  
jcoakley@cresa.com

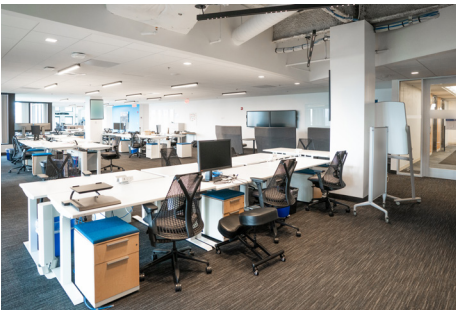
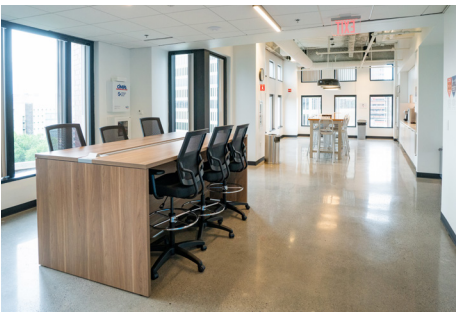


Paul Delaney  
617.758.6016  
pdelaney@cresa.com



# 255 Main Street Cambridge, Massachusetts

6th & 7th Floor - 32,077 RSF



## For More Information

Cresa  
280 Congress Street, Floor 10  
Boston, MA 02210  
cresa.com



John Coakley  
617.758.6039  
jcoakley@cresa.com



Paul Delaney  
617.758.6016  
pdelaney@cresa.com