

5635 EAST THOMAS ROAD
PHOENIX, ARIZONA



8,642 SF FOR SALE | \$ 1,525,000

ACROSS FROM ARIZONA COUNTRY CLUB

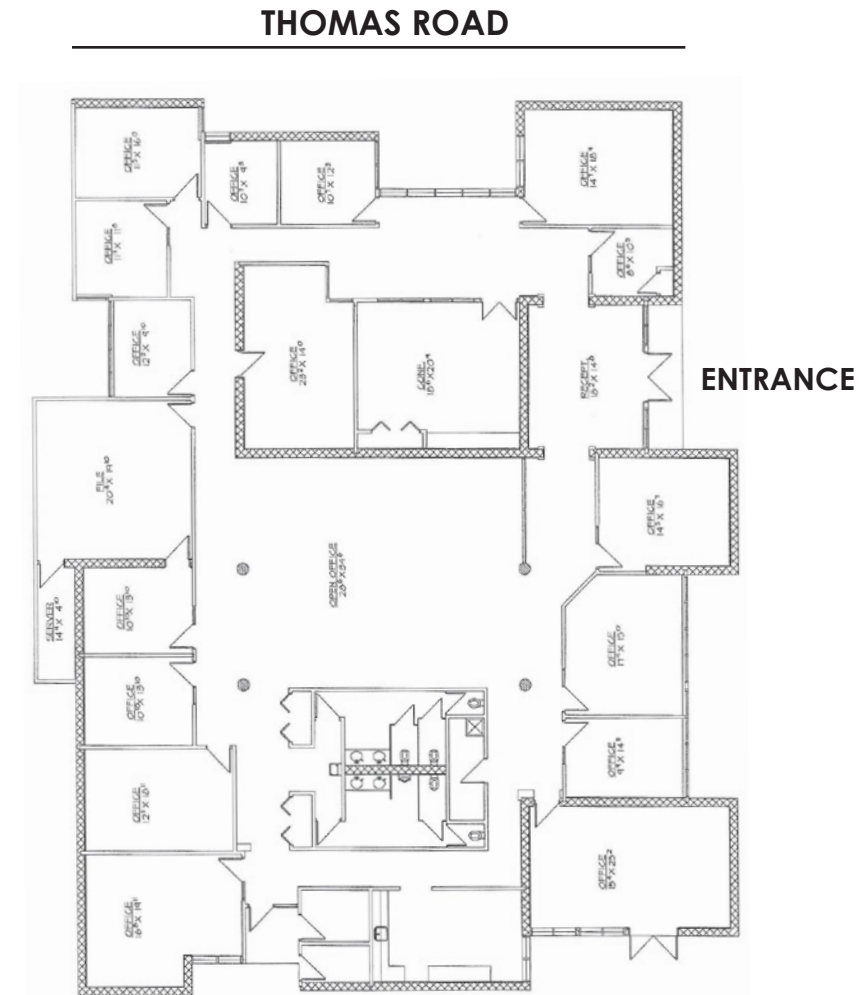
JOHN CERCHIAI, SIOR
PRINCIPAL
602.954.3763
jcerchiai@leearizona.com

FRED DARCHÉ
MANAGING PRINCIPAL
602.954.3756
fdarche@leearizona.com

 **LEE &
ASSOCIATES®**
COMMERCIAL REAL ESTATE SERVICES

FOR SALE

- 8,642 SF
- 5:1000 Parking
- Ample Covered Parking
- Large Open Area - Approximately 14' Clear Height



FRED DARCHE
MANAGING PRINCIPAL
602.954.3756
fdarche@leearizona.com



5635 EAST THOMAS ROAD PHOENIX, ARIZONA

FOR SALE



All information furnished regarding property for sale, rental or financing is from sources deemed reliable, but no warranty or representation is made to the accuracy thereof and same is submitted to errors, omissions, change of price, rental or other conditions prior to sale, lease or financing or withdrawal without notice. No liability of any kind is to be imposed on the broker herein.



JOHN CERCHIAI, SIOR
PRINCIPAL
602.954.3763
jcerchiai@leearizona.com

FRED DARCHÉ
MANAGING PRINCIPAL
602.954.3756
fdarche@leearizona.com

3200 E. Camelback Road, Suite #100
Phoenix, Arizona, 85018
ph: 602.956.7777 fx: 602.954.0510
www.leearizona.com

LEE & ASSOCIATES®
COMMERCIAL REAL ESTATE SERVICES