



Take a Virtual Tour!

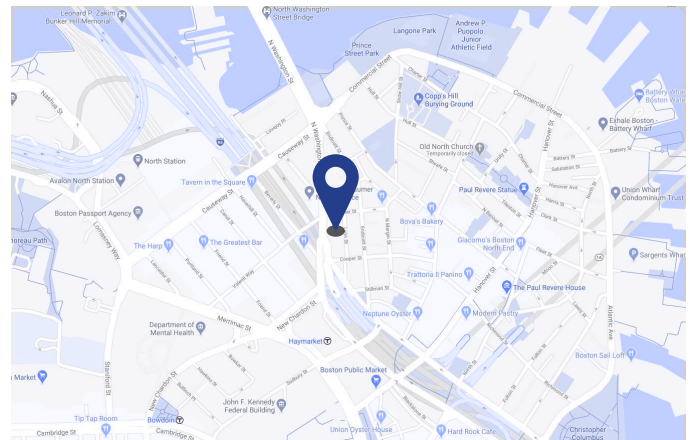
77 North Washington Street Boston, MA

Sublease Available

Space Profile

Premises	3,927 - 13,889 SF
Floor	7
Availability	Immediate
Term	Through September 30, 2025
Rental Rate	\$39.50/SF
Submarket	North Station

Map



Features

- Creative office space
- High ceilings, exposed brick and beam, wood floors and great natural light
- 360-degree window views
- Close to MBTA Green Line, Orange Line and commuter rail at North Station

For More Information

Cresa
280 Congress Street
Floor 10
Boston, MA 02210
cresa.com



Derek Losi
617.758.6021
dlosi@cresa.com



Matt Harvey
617.758.6003
mharvey@cresa.com



Andrew Orpik
617.758.6077
aorpik@cresa.com

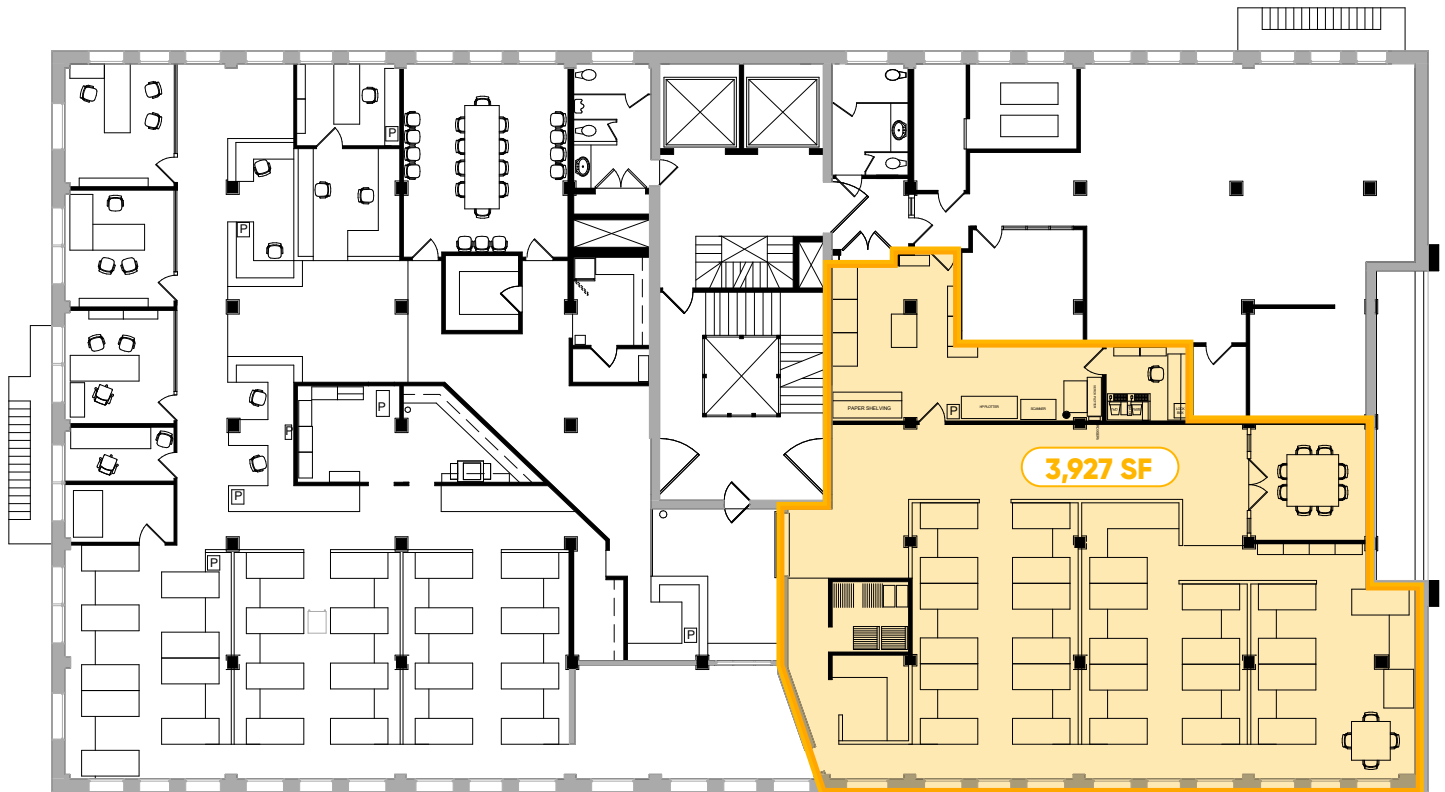
Even though obtained from sources deemed reliable, no warranty or representation, express or implied, is made as to the accuracy of the information herein, and it is subject to errors, omissions, change of price, rental or other conditions, withdrawal without notice, and to any special listing conditions imposed by our principals.





77 North Washington Street Boston, MA

7th Floor: 3,927 - 13,889 SF



For More Information

Cresa
280 Congress Street, Floor 10
Boston, MA 02210
cresa.com



Derek Losi
617.758.6021
dlosi@cresa.com



Matt Harvey
617.758.6003
mharvey@cresa.com

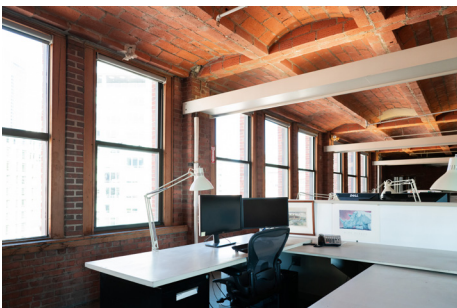
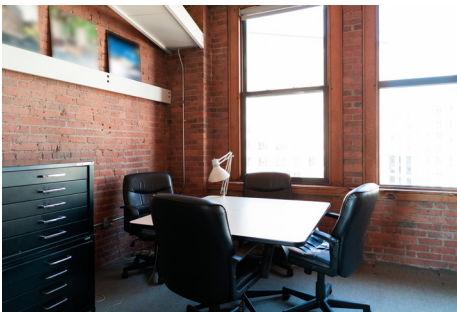
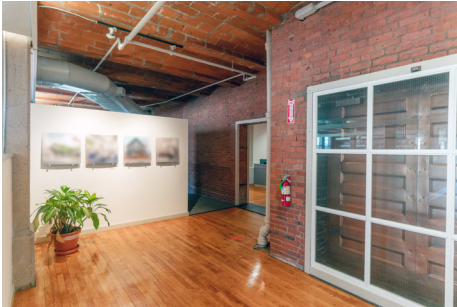


Andrew Orpik
617.758.6077
aorpik@cresa.com



77 North Washington Street Boston, MA

7th Floor: 3,927 - 13,889 SF



For More Information

Cresa
280 Congress Street, Floor 10
Boston, MA 02210
cresa.com



Derek Losi
617.758.6021
dlosi@cresa.com



Matt Harvey
617.758.6003
mharvey@cresa.com



Andrew Orpik
617.758.6077
aorpik@cresa.com