



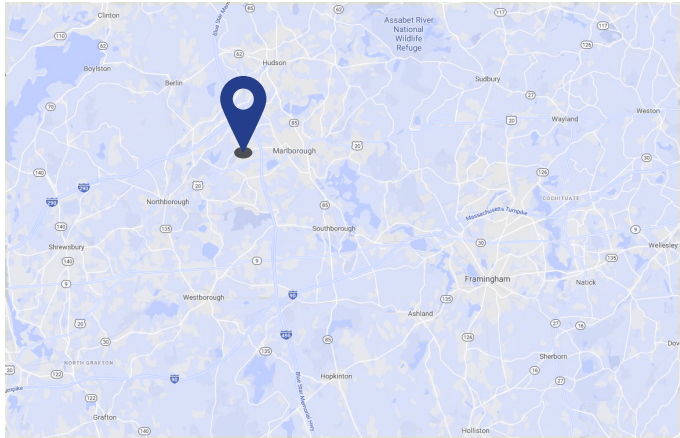
**33 Boston Post Road West
Marlborough, MA 01752**

**Sublease
Available**

Space Profile

Premises	2,669 SF
Floor	3
Availability	Immediate
Term	Through October 31, 2024
Rental Rate	Negotiable
Built	1984, renovated 2019
Submarket	495 MetroWest
Parking	3.00 spaces per 1,000 SF

Map



Features

- Located proximate to Apex Entertainment Center and multiple restaurants
- Cafeteria and fitness center in building
- Recent renovations to common lobby area
- Recently built out space with additional exterior offices and kitchenette

For More Information

Cresa
280 Congress Street
Floor 10
Boston, MA 02210
cresa.com



Dave Ross
617.758.6088
dross@cresa.com

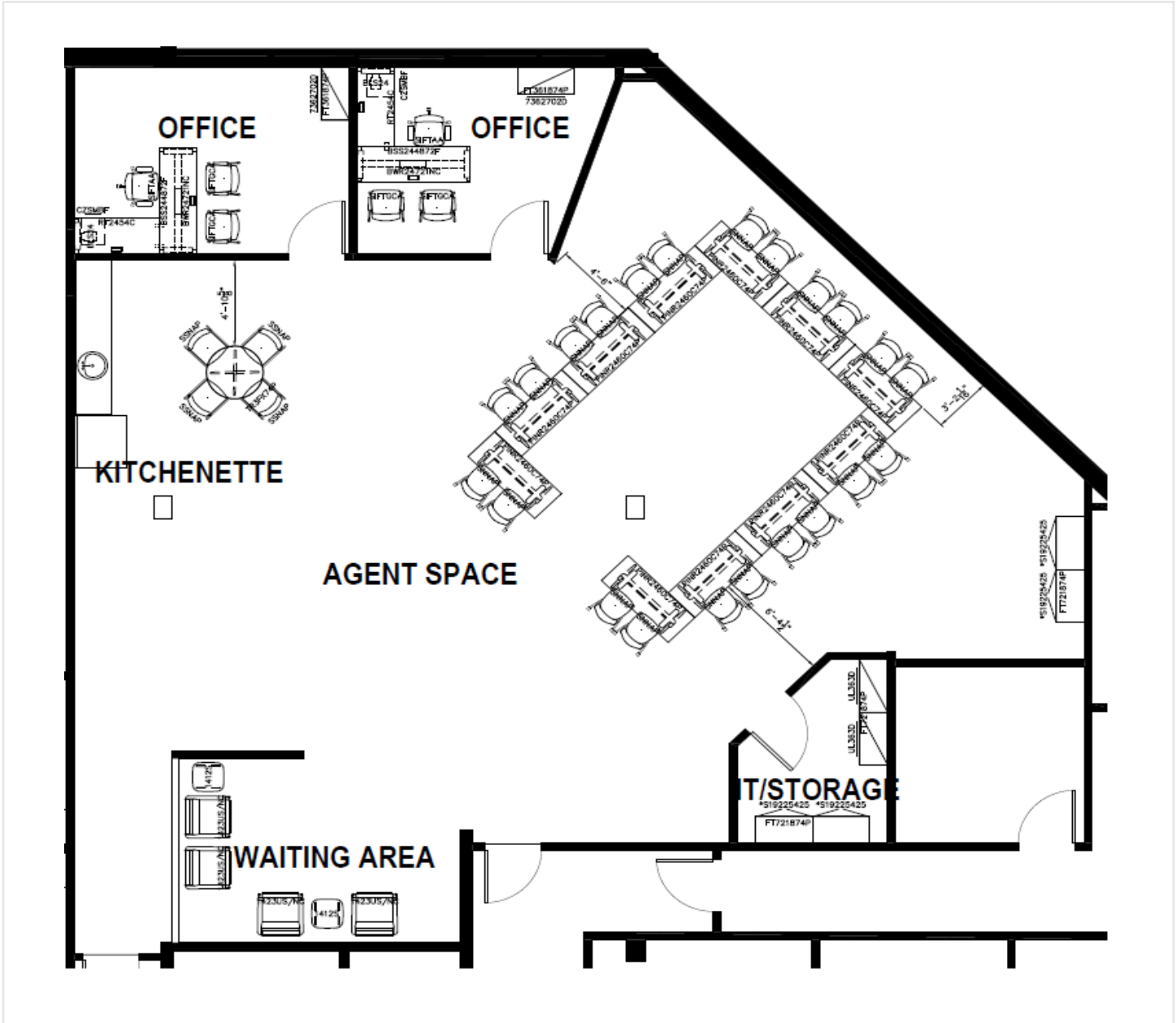


Nathaniel Heilbron
617.758.6005
nheilbron@cresa.com

Even though obtained from sources deemed reliable, no warranty or representation, express or implied, is made as to the accuracy of the information herein, and it is subject to errors, omissions, change of price, rental or other conditions, withdrawal without notice, and to any special listing conditions imposed by our principals.



3rd Floor - 2,669 SF



For More Information

Cresa
280 Congress Street, Floor 10
Boston, MA 02210
cresa.com



Dave Ross
617.758.6088
dross@cresa.com



Nathaniel Heilbron
617.758.6005
nheilbron@cresa.com