

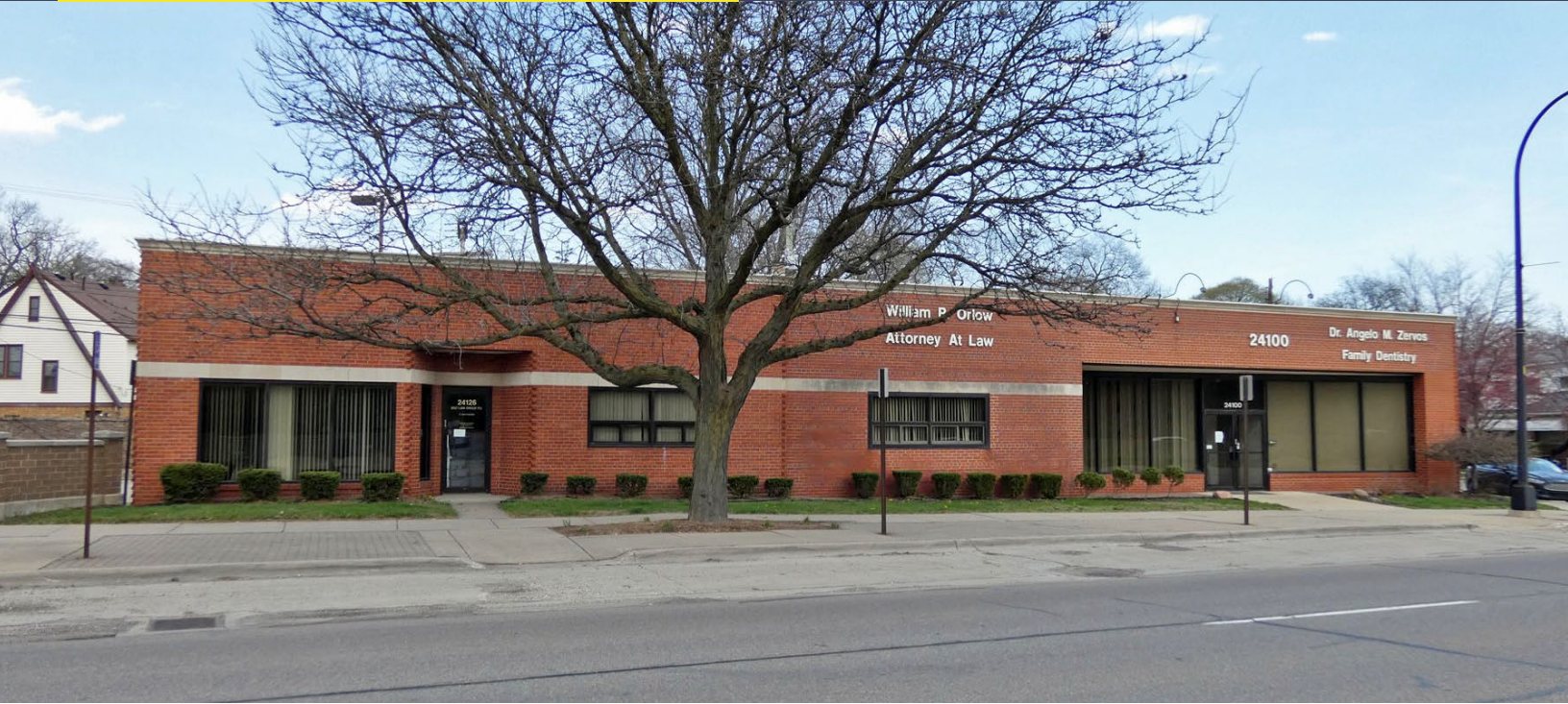
24126 WOODWARD AVENUE  
PLEASANT RIDGE, MICHIGAN

OFFICE FOR LEASE  
1,240 Square Feet Available



**SIGNATURE  
ASSOCIATES**  
KNOW SIGNATURE | KNOW RESULTS

**SINGLE-STORY OFFICE BUILDING**



## PROPERTY FEATURES

- 1,240 square feet available
- Zoned BI
- Private entry office space with Woodward Avenue frontage
- Available fully furnished
- Signage available
- Plenty of off-street parking
- Convenient access to I-696 & I-75, Royal Oak and Ferndale restaurants
- Lease Rate: \$20.00/sq.ft. Gross



For more information, please contact:

**DAN MORROW**  
(248) 799 3144  
dmorrow@signatureassociates.com

**JOE BANYAI**  
(248) 948 0108  
jbanyai@signatureassociates.com

**SIGNATURE ASSOCIATES**  
One Towne Square, Suite 1200  
Southfield, MI 48076  
www.signatureassociates.com

# 24126 Woodward Avenue – Pleasant Ridge, Michigan

Office For Lease

1,240  
Square Feet  
AVAILABLE

Interior  
Photos



For more information, please contact:

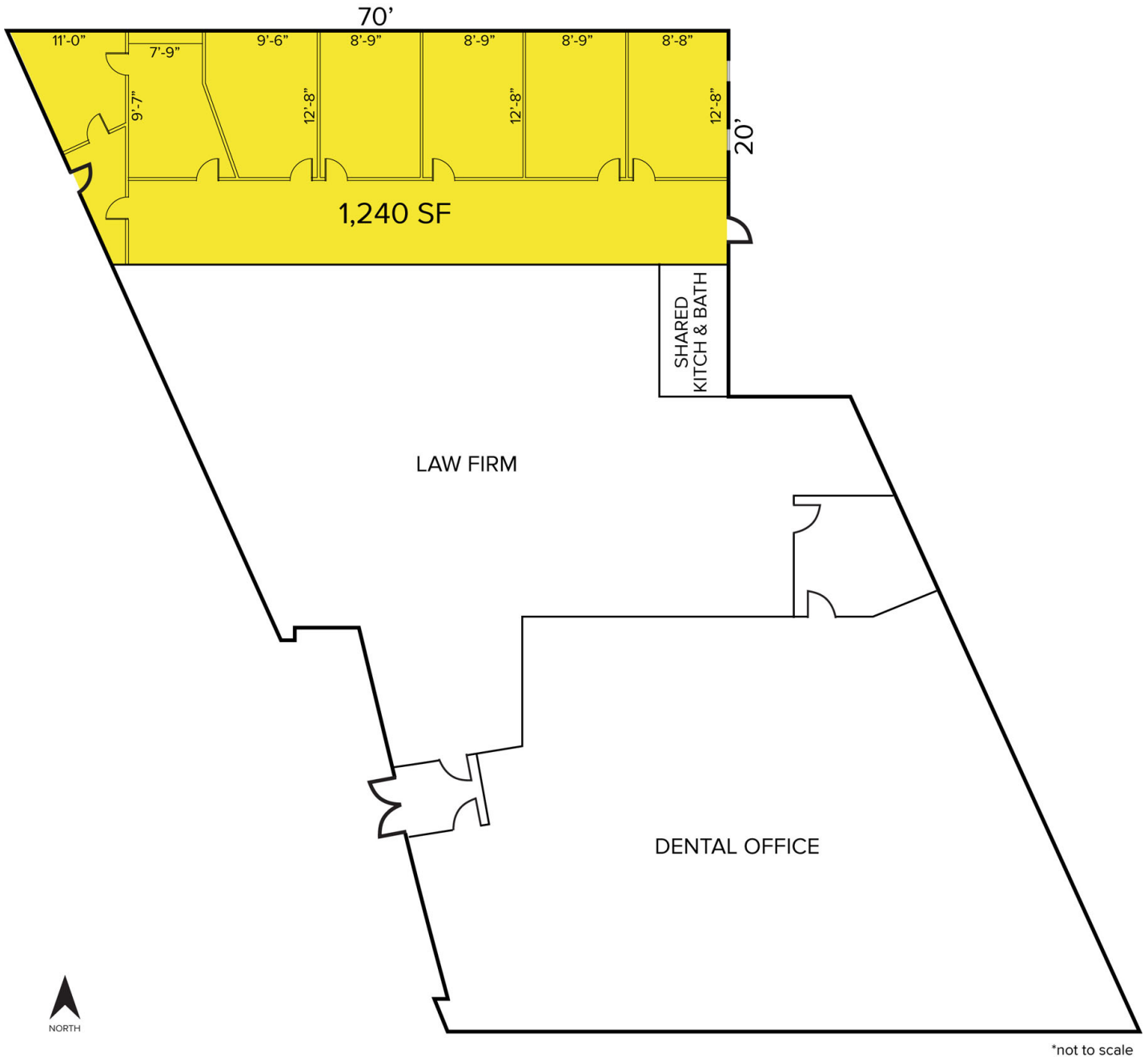
**DAN MORROW**  
(248) 799 3144  
dmorrow@signatureassociates.com

**JOE BANYAI**  
(248) 948 0108  
jbanyai@signatureassociates.com

**SIGNATURE ASSOCIATES**  
One Towne Square, Suite 1200  
Southfield, MI 48076  
www.signatureassociates.com

Information is subject to verification and no liability for errors or omissions is assumed. Price is subject to change and listing withdrawal.

Floor Plan



For more information, please contact:

**DAN MORROW**  
(248) 799 3144  
dmorrow@signatureassociates.com

**JOE BANYAI**  
(248) 948 0108  
jbanyai@signatureassociates.com

**SIGNATURE ASSOCIATES**  
One Towne Square, Suite 1200  
Southfield, MI 48076  
www.signatureassociates.com

# 24126 Woodward Avenue – Pleasant Ridge, Michigan

Office For Lease

1,240  
Square Feet  
AVAILABLE

Aerial



For more information, please contact:

**DAN MORROW**  
(248) 799 3144  
dmorrow@signatureassociates.com

**JOE BANYAI**  
(248) 948 0108  
jbanyai@signatureassociates.com

**SIGNATURE ASSOCIATES**  
One Towne Square, Suite 1200  
Southfield, MI 48076  
www.signatureassociates.com