

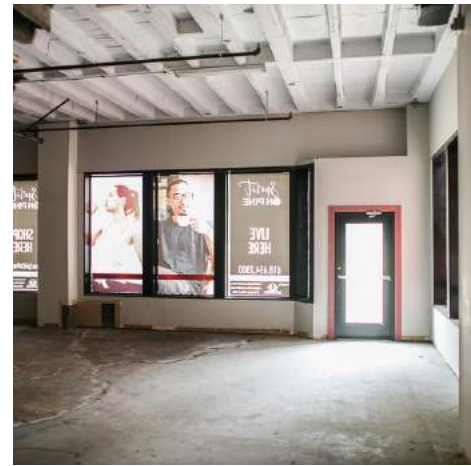
1405 Pine St.
St. Louis, MO 63103



TOWER
REAL ESTATE GROUP

FOR LEASE \$2,200/MO MG

- Suite A : 2,200 SF
- Multiple Entry Doors, Can Divide
- New Ownership - Several Updates Underway
- To Be Delivered Whitebox
- Traffic Count 15,000+ Vehicles Per Day
- Average Household Income Over \$62,000
- Located Near Dense Residential Population, Stifle Theatre, Enterprise Center and SLU Law
- Downtown Events Drawing 1,000s of Potential Customers Year-Round



Eric Schultz
eric@risetothelocation.com
314.332.4417

Mike Cromie
mike@risetothelocation.com
314.428.9738

RISE TO THE LOCATION.com

2315 Locust Street Suite 2 | St. Louis | MO 63103 | 314.329.0839

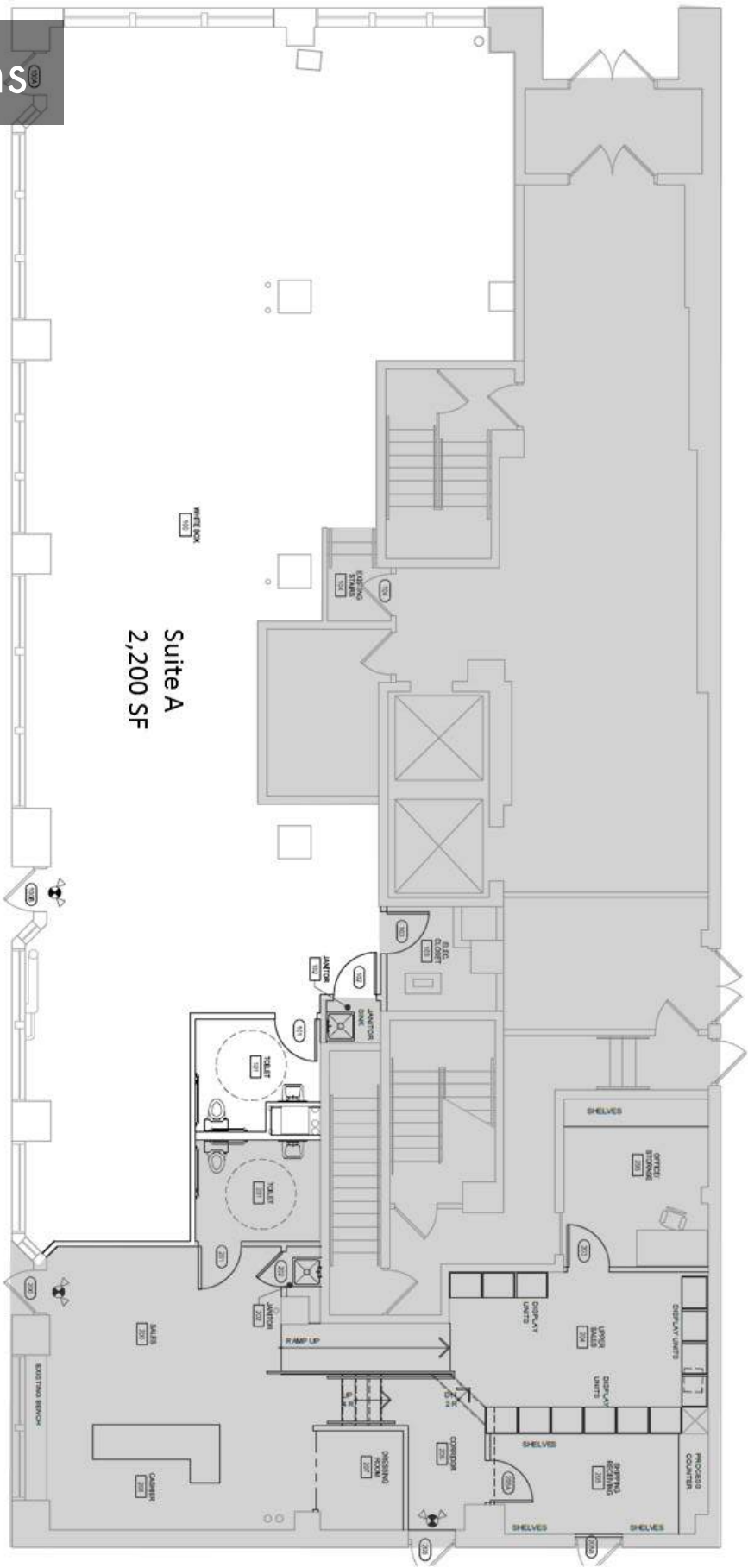


Location



Aerial

Floor Plans



Suite A
2,200 SF